

Index
No.

--	--	--	--	--	--	--	--	--	--

PEI CHUN PUBLIC SCHOOL
PRELIMINARY EXAMINATION, 2015

ENGLISH LANGUAGE
PAPER 2
(BOOKLET A)

Additional materials: Optical Answer Sheet (OAS) Total Time For Booklets A & B : 1 h 50 min

Name : _____ ()

Class : Primary 6 ____

Date : 13 August 2015

INSTRUCTIONS TO CANDIDATES

1. WRITE YOUR INDEX NO. IN THE BOXES AT THE TOP RIGHT HAND CORNER.
2. DO NOT TURN OVER THIS PAGE UNTIL YOU ARE TOLD TO DO SO.
3. FOLLOW ALL INSTRUCTIONS CAREFULLY.
4. ANSWER ALL QUESTIONS.
5. SHADE YOUR ANSWERS IN THE OPTICAL ANSWER SHEET (OAS) PROVIDED.

Section A: Grammar MCQ (10 × 1 mark)

For each question from 1 to 10, shade your answer (1, 2, 3 and 4) on the Optical Answer Sheet.

1. Not having _____ that Adeline was unwell, I asked her to help me with the project after school.
- (1) know
 - (2) knew
 - (3) knows
 - (4) known
2. Raja mistook his pencil case _____ his friend's because they looked similar.
- (1) as
 - (2) for
 - (3) over
 - (4) with
3. Instead of driving to work _____, Mr Simon took a taxi with his colleagues.
- (1) herself
 - (2) himself
 - (3) ourselves
 - (4) themselves
4. _____ his difficulties, the poor man was unable to live a comfortable life.
- (1) Apart from
 - (2) Owing to
 - (3) Despite
 - (4) Besides
5. Mrs Tan made Dylan _____ back after school to complete his homework yesterday.
- (1) stay
 - (2) stays
 - (3) stayed
 - (4) staying

6. Either of the boys _____ responsible for the mess created in the classroom two weeks ago.
- (1) is
 - (2) are
 - (3) was
 - (4) were
7. I'm chairing the meeting tomorrow, _____ I?
- (1) am
 - (2) are
 - (3) isn't
 - (4) aren't
8. After implementing some traffic control measures, the number of cars on the roads _____.
- (1) decrease
 - (2) decreasing
 - (3) has decreased
 - (4) have decreased
9. He has a habit of putting _____ his friends by passing sarcastic remarks.
- (1) down
 - (2) forth
 - (3) off
 - (4) out
10. If you have _____ time to spare, please help me out with this survey.
- (1) many
 - (2) much
 - (3) a few
 - (4) a little

Section B: Vocabulary MCQ (5 × 1 mark)

For each question from 11 to 15, shade your answer (1, 2, 3 and 4) on the Optical Answer Sheet.

11. It is quite difficult to understand what Sally says as she has a slight _____ in her speech after the accident.
- (1) hindrance
 - (2) impediment
 - (3) aggravation
 - (4) complication
12. The child walked bare-foot _____ on the beach for fear of sharp objects hidden in the sand.
- (1) gingerly
 - (2) carelessly
 - (3) hopefully
 - (4) nonchalantly
13. Healthcare and housing provision are the first problems that the newly formed government has to _____.
- (1) avoid
 - (2) evade
 - (3) worry
 - (4) tackle
14. Ravi was such a/an _____ speaker that he clinched the Best Debater Award.
- (1) amiable
 - (2) eloquent
 - (3) repulsive
 - (4) notorious
15. Before the boss left for his trip, he _____ some of his duties to his subordinates.
- (1) disbursed
 - (2) depended
 - (3) delegeted
 - (4) dispatched

Section C: Vocabulary Cloze (5 × 1 mark)

For each question from 16 to 20, choose the word(s) closest in meaning to the underlined word(s). Shade your answer (1, 2, 3 or 4) on the Optical Answer Sheet.

Numerous nations have flowers as national symbols. Singapore's national flower, the Vanda Miss Joaquim, is a robust sun-loving hybrid orchid. It was discovered in the garden of
(16)
a horticulturist, Miss Agnes Joaquim, and was declared as our national flower in 1981. This
(17)
unique plant requires heavy fertilisation for optimal flowering and grows in dense clumps.
(18)
National flowers allow a nation to identify with qualities that it wishes to foster. The Vanda
(19)
Miss Joaquim was selected for its resilience and ability to bloom all year round, reflecting
(20)
our country's unique spirit and pursuit for excellence.

16. (1) hardy
(2) durable
(3) persistent
(4) tenacious
17. (1) decided
(2) affirmed
(3) announced
(4) disseminated
18. (1) highest
(2) intensive
(3) favourable
(4) convenient
19. (1) raise
(2) cherish
(3) duplicate
(4) encourage
20. (1) devotion
(2) volatility
(3) toughness
(4) enthusiasm

Section D: Visual Text Comprehension (8 × 1 mark)

Study this advertisement carefully and then answer questions 21 to 28.

The Nature History Museum Presents.....

Treasures Of the Past

Synopsis

Head on down to the Nature History Museum for an experience of a lifetime! You do not want to miss our special exhibition "Treasures of the Past"! This one time only exhibition features artefacts that will wow you like never before. Visitors will be taken on a journey through time! You will get to see some of the world's oldest dinosaur fossils ever discovered, experience a panoramic view of environmental changes over the years and view some beautiful art pieces from famous artists from the past.

Featuring:

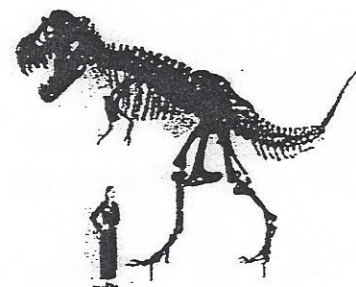
- ↓ Life-sized displays of dinosaur skeletal structures
- ↓ Dozens of fossils discovered by archaeologists during many excavations
- ↓ Wax figures of famous people in history including famous inventors and scientists
- ↓ Art work originally done by famous painters
- ↓ Interactive displays on Earth's geography and environmental history

3 weeks only!

**South-East
Asia's Biggest
First-of-its-
kind Exhibition
of Treasures
from the Past!**

Dinosaur Exhibition

This exciting exhibition showcases many life-sized exhibits, including a 25-metre long Tyrannosaurus Rex. You will also see a newly-discovered fossil of an Apatosaurus, the well-known 'deceptive reptile'. Along with this, you get to try your hand at excavating some dinosaur bones at our activity booth!

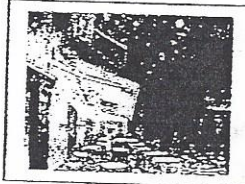
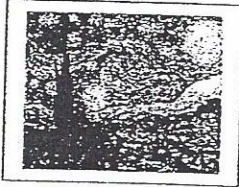


Amazing People of the Past

Want to know how certain items we use today were invented? Learn about how electricity and gravity was discovered! Not only can you learn about their work, you get to take pictures with realistic wax figures of famous inventors!



Wonderful Artwork Display



At our art gallery, displays of art work will be projected on our 20-metre high walls. With soothing music playing in the background, it is a perfect place to admire beautiful art pieces.

31 May 2015 to 20 June 2015

Admission Charges:

Adult: \$22

Senior Citizen (65 years old and above): \$18

Child (under 12 years old): \$12

Call 6098 3009 or book your tickets online now!

Enjoy \$3 off if you purchase your tickets online at www.nhmuseum.com

Mobile Game Booth

A one-time free download of the web interactive game available here!

Participate in free games about dinosaurs and art to win free tickets to the exhibition if you are the top scorer!

Exclusive Packages for Weekdays!

Family packages:

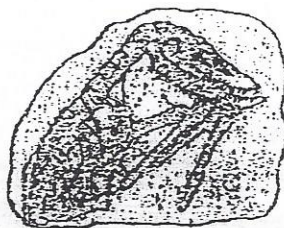
- Purchase 2 adult tickets and 2 child tickets and get a third child ticket free **OR**
- Families with senior citizens get a 50% discount on all tickets

School Packages:

- Early bird bookings before 31 May at 20% off
- Each pupil will receive an exclusive stationery set (with a minimum of 100 pupils)

Group Packages:

- Bookings with a minimum of 20 people get 10% discount
- Bookings with a minimum of 30 people will include free buffet lunch at in-house cafe



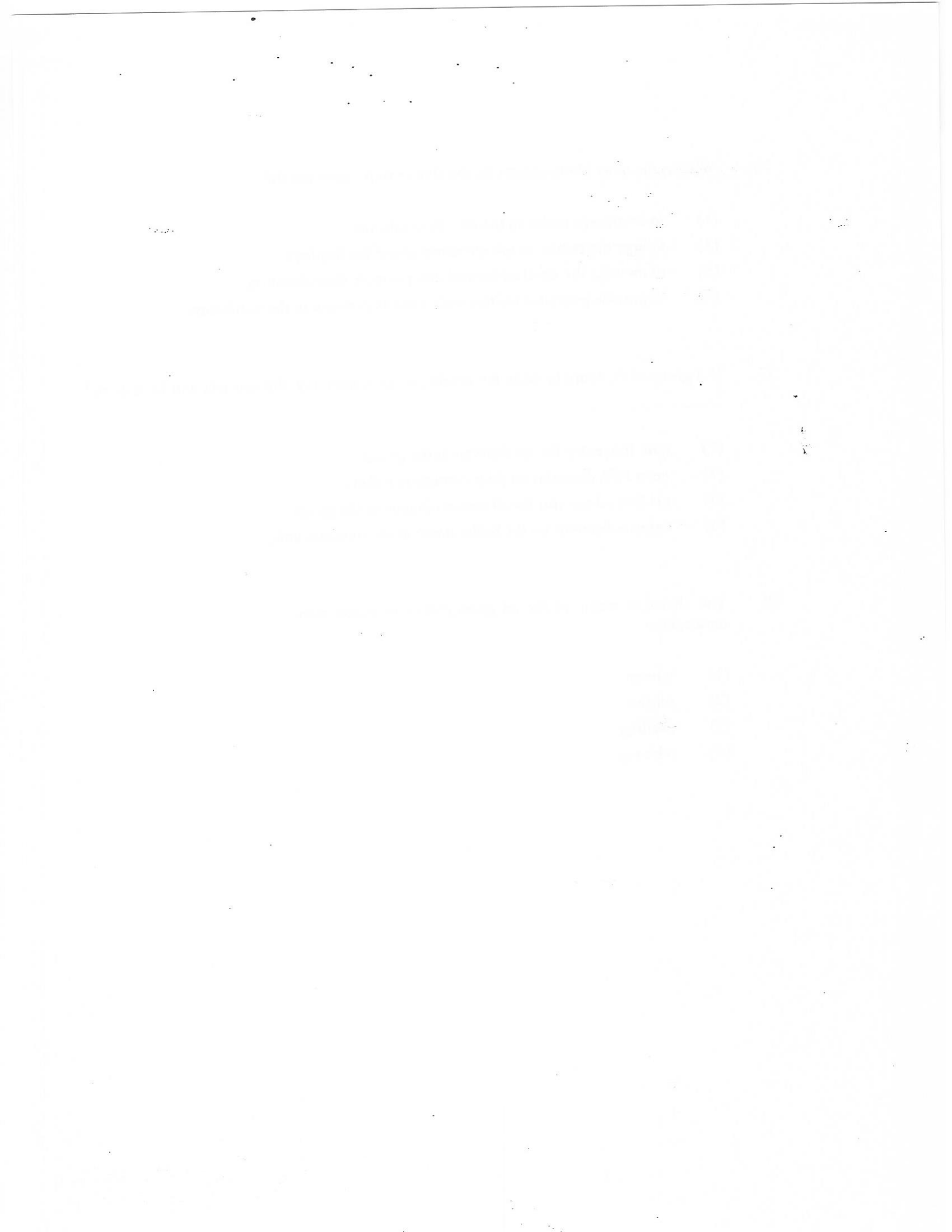
Sponsors :

- Kendrick College
- American Museum of Natural History
- The Education Council

For each question from 21 to 28, shade your answer (1, 2, 3 or 4) on the Optical Answer Sheet.

21. The "Treasures of the Past" exhibition is organised by _____
- (1) Kendrick College
 - (2) The Education Council
 - (3) The Nature History Museum
 - (4) The American Museum of Natural History
22. Why are many exclamation marks used in the synopsis?
- (1) to capture the attention of the readers
 - (2) to express the excitement of the partners
 - (3) to attract readers to sign up for the various package offers
 - (4) to encourage readers to take part in the mobile application games
23. Which one of the following is **not** an attraction at the exhibition?
- (1) the mobile game booth
 - (2) life-sized dinosaur fossil displays
 - (3) paintings by artists like Vincent Van Gogh
 - (4) interactive displays about the environment
24. Mr. Tan wishes to take his wife, son and 65-year-old parents to the exhibition on a Tuesday. Which of the following is true?
- (1) Mr Tan's family will receive one set of free stationery.
 - (2) Mr Tan can make a booking before 31 May and enjoy a discount.
 - (3) Mr Tan's family will only need to pay half price for their admission tickets.
 - (4) Mr Tan's family will be entitled to a free buffet lunch at the museum's cafe.
25. The main aim of the exhibition is to _____
- (1) promote the study of fossils
 - (2) give credit to the artists for their amazing artwork
 - (3) provide visitors with an opportunity to experience natural and art history
 - (4) allow visitors to participate in games for a chance to win free tickets to the exhibition

26. What is the most likely reason for the free mobile game booth?
- (1) to encourage children to visit the exhibition
 - (2) to urge the public to ask questions about the displays
 - (3) to increase the level of interest and promote the exhibition
 - (4) to provide potential visitors with a sneak preview to the exhibition
27. If a group of 50 tourists visits the exhibition on a weekday, the tourists will be able to _____
- (1) gain free entry for all children in the group
 - (2) get a 10% discount on their admission tickets
 - (3) get free admission for all senior citizens in the group
 - (4) enjoy a discount on the buffet lunch at the museum cafe
28. The choice of music at the art gallery aims to create a/an _____ atmosphere.
- (1) intense
 - (2) serious
 - (3) exciting
 - (4) relaxing



Index No. -

PEI CHUN PUBLIC SCHOOL
PRELIMINARY EXAMINATION, 2015
ENGLISH LANGUAGE
PAPER 2
(BOOKLET B)

Total Time For Booklets A & B : 1 h 50 min

Name : _____ ()
 Class : Primary 6 ____
 Date : 13 August 2015
 Parent's Signature: _____

Paper 1	55
Paper 2 (Booklet A)	28
Paper 2 (Booklet B)	67
Paper 3	20
Paper 4	30
TOTAL	200

INSTRUCTIONS TO CANDIDATES

1. WRITE YOUR INDEX NO. IN THE BOXES AT THE TOP RIGHT HAND CORNER.
2. DO NOT TURN OVER THIS PAGE UNTIL YOU ARE TOLD TO DO SO.
3. FOLLOW ALL INSTRUCTIONS CAREFULLY.
4. ANSWER ALL QUESTIONS.
5. WRITE YOUR ANSWERS...

Section E: Grammar Cloze (10 × 1 mark)

There are 10 blanks, numbered 29 to 38, in the passage below. From the list of words given, choose the most suitable word for each blank. Write its letter (A to Q) in the blank. The letters (I) and (O) have been omitted to avoid confusion during marking.

EACH WORD CAN BE USED ONLY ONCE.

(A) all	(D) between	(G) do	(K) in	(N) then
(B) are	(E) but	(H) does	(L) is	(P) through
(C) around	(F) by	(J) for	(M) than	(Q) to

The nervous system is the body's system for monitoring the world (29) _____ us and figuring out the best way to react to it. It does this by using millions of neurons, which (30) _____ tiny nerve cells that link the brain with the rest of the body. Together, they are the body's way of absorbing and processing information about its environment, which it receives (31) _____ the five senses of hearing, smell, taste, touch and sight. This is how your body "knows" how to react to light and heat or to a situation that could pose a danger (32) _____ it.

The brain is the command centre for much of this process, (33) _____ it does not do it alone. It is connected to the long bundle of nerves which runs down your spine. The spine is (34) _____ turn connected to a network of nerves with branches spread (35) _____ over your body.

Neurons come in different shapes and sizes, but they all do one thing – they relay information (36) _____ transmitting messages in the form of electro-chemical signals. Sensory cells in the body produce electrical signals which are (37) _____ forwarded to the spinal cord.

In the spinal cord, the signals are processed and sent to the brain or directly to the organs or muscles so that the body can react quickly.

The whole nervous system, which consists of the brain and the neurons, (38) _____ a lot more than just react to things in the environment. It also controls the functions of internal organs.

Section F: Editing for Spelling and Grammar (12 × 1 mark)

Each of the underlined words contains either a spelling or grammatical error. Write the correct word in each of the boxes.

It is December now. It is raining heavily as I write this. For some strange reason, I like

(39)

(40)

this kind of whereder - perhaps because the time of the north-east monsoon usually ocured

during the long holidays.

(41)

(42)

My childhood holidays were much humble than what the children of my corleagues enjoy

(43)

today. Much of my holidays is spent with my paternal grandmother on Fraser's Hill or

(44)

Cameron Highlands. After 1965, we would spend a sikneeficant portion of our holidays at

(45)

Changi Cottage or in the bungalows by the sea that government orticials could use. These

(46)

holidays were rare oportunertjes when my brothers and I had our father's company for the entire

day. At least once a year, my father would take us to Pulau Ubin to try out the obstacle course at

the Outward Bound School. I still have a photograph of my elder brother, Loong, climbing a net-

(47)

like structure with parallel rows of horizontal ropes attached by the rows of vertical ones. In the

(48)

photograph, Loong made it to the top, while I was trying very hard to catch on with him, as

(49)



indicated by the driving expression on my face.

All three of us enjoyed our holidays in Changi and the quality time we had with our

(50)



parents. I doubt we would have enjoyed ourselves more if our parents had fly us off to more

exotic and expensive destinations overseas.

Adapted from *Simple Holidays, Rich Memories* by Lee Wei Ling, The Straits Times, 2009

Section G: Comprehension Cloze (15 × 1 mark)

Fill in each blank with a suitable word.

The Tet Festival, or the Festival of the First Day, announces the Lunar New Year in Vietnam. It is the most important date in the Vietnamese calendar. It is much more than your

_____ (51) New Year's celebration – it is a time when families reunite in the

_____ (52) of ushering in good fortune for the coming year.

Some rituals _____ (53) before Tet include the cleaning of ancestors'

graves. Absent family members also start to make their _____ (54) home so

that the whole family can celebrate Tet under the same _____ (55). All loose

ends are tied up so that the new year can be started with a clean _____ (56)

everything in the house is cleaned and debts are _____ (57)

Much like the Western tradition of putting up Christmas trees, Vietnamese homes are

_____ (58) with trees at this time and it is believed that they can

_____ (59) off evil spirits. Like special events anywhere, a large part of the Tet

celebrations _____ (60) around food. A staple during this period is the *banh*

chung, which are square parcels of glutinous rice with fatty meat and bean paste. They are

_____ (61) with a green *banana* leaf and tied with bamboo twine, giving them

the _____ (62) of a present.

The events of New Year's Day are very important as it is believed that they affect the

_____ of life in the year ahead. People take extra care not to be rude or to
(63)

show anger. Activities such as sweeping, swearing and sewing are _____
(64)

as they are believed to attract bad spirits.

Apart from New Year's Eve itself, Tet is not a particularly boisterous celebration.

Like Christmas, it is _____ a quiet family affair. It is interesting to witness
(65)

the contrasting frenzy before the New Year and the calm afterwards.

Adapted from Vietnam, Lonely Planet

Section H: Synthesis/Transformation (5 × 2 marks)

For each of the questions 66 to 70, rewrite the given sentence(s) using the word(s) provided. Your answer must be in **one** sentence. The meaning of your sentence must be the same as the meaning of the given sentence(s).

66. The recent earthquake was the most devastating one in this region.

No earthquake was more _____

67. The thief stole the wallet that contained thick wads of notes.

The wallet _____

68. The man depended on the fruits and water found on the island to survive.

_____ was dependent on

69. "Where will you be heading to after your course today?" Fatimah asked me.

Fatimah asked _____

70. A road must be built so that medical supplies can be delivered to the villagers easily.

In order to _____

Section I: Comprehension Open-ended (20 marks)

Read this passage and answer questions 71 to 80.

Three miles to the south squatted the only village on the whole island – a sorry-looking clutch of houses on stilts with a population of about four hundred impoverished souls. The village's domestic goats and chickens were fenced up beneath the houses during the day and gathered up the vertical steps into their owners' houses at night. The villagers' staple diet was the squid which was netted from their boats daily. They feared the Komodo Dragons. Only a few villagers ventured inland as nervous guides to the rare outsiders. 5

On my first visit, we chose the safer of two promising sites for dragon-spotting, a short walk to Loho Liang, barely a mile inland to an observational ledge overlooking a dried riverbed. Here, the reptiles could be observed from the safety above. Alternatively, we could have made a four-hour long walk up to Poreng, the open land where the Dragons could be encountered at eye level, and where the offering of a sacrificial goat was even more essential for distracting their gastronomic attentions from their observers. 10

The Dragons were like the Angels of Death. Their mouths carried bacteria to which there was no known cure. A victim might escape an initial attack with only a slight wound which within a few days would fester and stink so strongly that it was easy for the Dragons to sniff the victim down with their forked tongues and eat it. 15

It was long assumed that the Komodo Dragon was a scavenging carrion-eater, rather than a hunter, and that like most reptiles it was most active during the day, but inactive at night. However, studies showed that it did carry out some nocturnal activities. Some thought that it could grow to only a metre long but evidence showed that it could grow to three metres long. These three myths were proven untrue by Walter Auffenberg, a scientist, who made the most comprehensive study of the creature. 20

Six weeks later, when the ship returned with passengers, I found myself leading a group of thirty people on the short walk to Loho Liang's dried riverbed. With us were Des and Jenny who were coming along to film. We had waited some time at the observational ledge and I was beginning to worry. Finally, a large solitary Dragon arrived. It immediately uprooted our goat and disappeared behind the undergrowth with its prize. Sensing a chance to show off, I came down from the observational ledge in hot pursuit of the Dragon. I saw the wooden post and the rope which was used to tie the goat at the point of vanishing beneath some bushes. I gripped the rope and was dragged helplessly along with the goat into the full-body embrace of a tree with thorns. 25 30

Every part of my body was held fast. I had only a few moments to think about the Dragon ahead before realising that barely twenty metres away behind me was an entire group of Dragons fast advancing. I debated on whether to tear myself loose from the tree and leaving my skin hanging on it or to shout for help. With no time to lose, I yelled. One of the guides reached me and freed me from the thorns of the tree. 35

Des, in the meantime, had approached the opposite side of the undergrowth, where he had accurately located the Dragon. He fooled it into releasing the goat from its jaws and marched back to the cheering crowd, holding the goat triumphantly. His heroic pose was **short-lived.** Hurrying up behind him on one side was the now irritated first Dragon. On the other, the guide and my bleeding self, hotly pursued by a group of hungry Dragons. It was not a pretty sight. 40

71a. Which word from lines 1-7 tells us that the villagers were poor? [1 m]

b. What does "it" in line 17 refer to? [1 m]

72. Why did a few villagers venture inland? [1 m]

73. Explain why the offering of a sacrificial goat was important at Poreng. [2 m]

74. Based on the story. State whether each statement in the table below is true or false, then give one reason why you think so. [3 m]

	True/False	Reason
The villagers' main sources of food were goats and chickens.		
The village did not have many visitors.		
The Dragon's forked tongue was used to pierce its prey.		

75. Why was the author worried in line 27? [2 m]

76. The table below compares the myths and facts about the Komodo Dragon. Fill in the blanks using the information from the story. [3 m]

Myth	Fact
	The Komodo Dragon hunted its own food.
The Komodo Dragon was the most active during the day, but inactive at night.	
The Komodo Dragon could grow to only a metre long.	

77. Explain the unpleasant situation the author was in when "Every part of my body was held fast" (line 33). [2 m]

78. Write 1, 2 and 3 in the blanks below to indicate the order in which the events occurred in the story. [1 m]

_____ The Dragons pursued the author, the guide and De^s.

_____ The author led a group of passengers to Loho Liang.

_____ The author was rescued by one of the guides.

79. Why was De^Sz's heroic pose considered "short-lived" (line 41) by the author? [2 m]

80. Would you prefer to observe the Dragons from Loho Liang or Poreng?
Support your answer with information from the passage. [2 m]

End of Paper

Set by: Mrs Celine Low, Mrs Melissa Leong, Miss Heng PH, and Miss Joyce Ng
Vetted by: Primary 6 English teachers

1900

...

...

...

...

...

...

...

...

...

EXAM PAPER 2015
 LEVEL : PRIMARY 6
 SCHOOL : PEI CHUN PUBLIC SCHOOL
 SUBJECT : ENGLISH
 TERM : PRELIMINARY EXAMINATION

BOOKLET A

Q1	Q2	Q3	Q4	Q5	Q6	Q7	Q8	Q9	Q10
4	2	2	2	1	3	4	3	1	4
Q11	Q12	Q13	Q14	Q15	Q16	Q17	Q18	Q19	Q20
2	1	4	2	3	1	3	3	4	3
Q21	Q22	Q23	Q24	Q25	Q26	Q27	Q28		
3	1	1	3	3	3	2	4		

PAPER 2 : BOOKLET B

Q29	Q30	Q31	Q32	Q33	Q34	Q35	Q36	Q37	Q38
C	B	P	Q	E	K	A	F	N	H

Q39 weather Q40 occurred Q41 humbler Q42 colleagues Q43 was Q44 significant Q45 officials
 Q46 opportunities Q47 to Q48 up Q49 driven Q50 flown Q51 usual Q52 hope Q53 performed
 Q54 way Q55 roof Q56 slate Q57 paid Q58 decorated Q59 ward Q60 revolves Q61 wrapped
 Q62 appearance Q63 course Q64 avoided Q65 mostly

- Q66. No earthquake was more devastating than the recent one in this region.
 Q67. The wallet that contained thick wads of notes was stolen by the thief.
 Q68. The man's survival was dependent on the fruits and water found on the island.
 Q69. Fatimah asked me where I would be heading to after my course that day.
 Q70. In order to deliver the medical supplies to the villagers easily, a road must be built.
 Q71a. Impoverished Q71b. the victim
 Q72. They ventured inland as guides to the rare outsiders.
 Q73. It was used as bait to distract the Dragon so that it would not attack the observers.
 Q74. FALSE - The village main source of food was the squid.
 Q74. TRUE - The village had rare visits from outsiders
 Q74. FALSE - The Dragon's forked tongue was used to shift their victims down.
 Q75. He worried that the visitors would not get to see the Dragon after waiting for a long time.
 Q76. Myth - The Komodo Dragon was scavenging carrion - eater, rather than a hunter
 Q76. Fact - The Komodo Dragon did carry out nocturnal activities.
 Q76. Fact - The Komodo Dragon could grow to three meters long.
 Q77. The author was unable to move as every part of his body was held by the thorns of the tree.
 Q78. 1 - The author led a group of passengers to Loho Liang.
 Q78. 2 - The author was rescued by one of the guides
 Q78. 3 - The Dragons pursued the author, the guide and Des.
 Q79. On one side of Des was the now irritated first dragon and the other side was the author and the guide being chase by a group of Dragons.
 Q80. I would prefer Loho Liang. It was a safer of the two promising sites and it was a shorter walk.

THE END

