



**NAN HUA PRIMARY SCHOOL
SEMESTRAL ASSESSMENT 1
PRIMARY THREE
SCIENCE 2008**

Name : _____ ()

Class : Primary 3 ()

Date : 8 May 2008

Duration : 1 hr 45 min

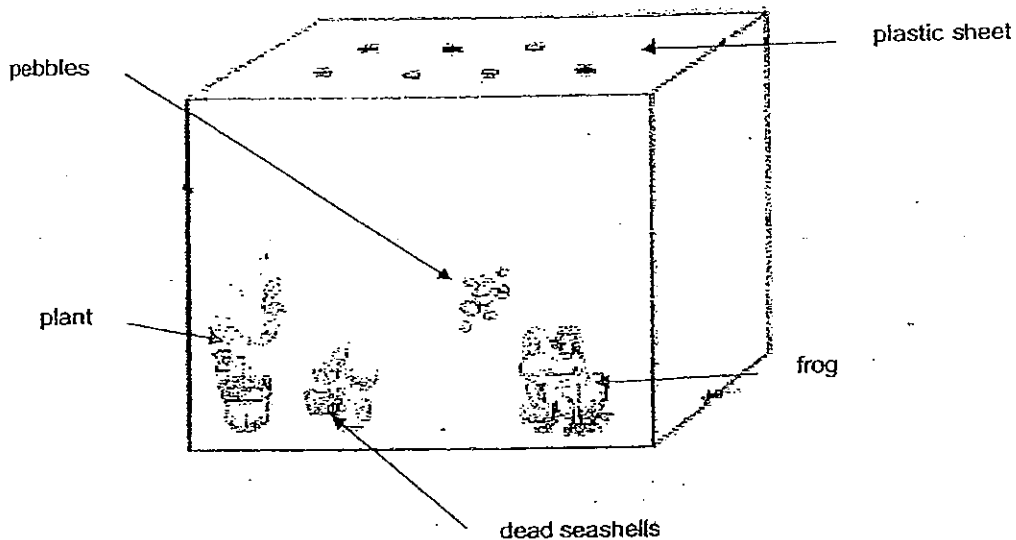
MARKS	
Section A:	/ 60
Section B:	/ 40
Total	: / 100

Parent's Signature

SECTION A (30 x 2 marks = 60 marks)

For each question from 1 to 30, four options are given. One of them is the correct answer. Make your choice (1, 2, 3 or 4). Shade the correct oval (1, 2, 3 or 4) on the Optical Answer Sheet.

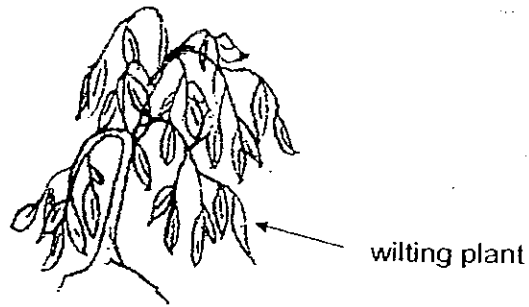
1. The diagram below shows a tank with some living things and non-living things in it.



Which one of the things in the tank is a non-living thing that was once alive?

- | | |
|-----------|--------------------|
| (1) frog | (2) pebbles |
| (3) plant | (4) dead seashells |

2.. The picture below shows a wilting plant in a garden. What does it need **essentially** to become healthy again? It needs _____.



- (1) air
- (2) water
- (3) sunlight
- (4) fertiliser

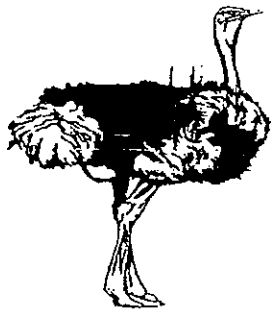
3. Mary found an animal-shaped object lying still in the garden. What could she do to find out whether it was a living or non-living thing? She could check if it _____.

- (1) had legs
- (2) could fly in the air
- (3) could make a sound
- (4) would respond to her touch

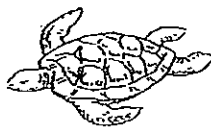
4. Which one of these animals has a **different** body covering from the others?



(1)



(2)

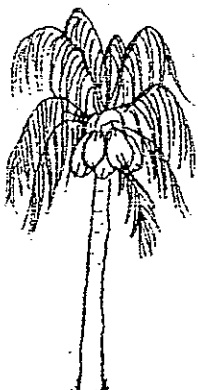


(3)



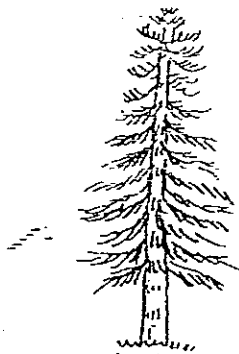
(4)

5. Which one of the diagrams below shows a non-flowering plant?



coconut tree

(1)



pine tree

(2)



maize plant

(3)



rambutan tree

(4)

6. Study the classification table below carefully.

Which two animals can possibly be 'X' and 'Y' ?

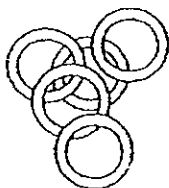
Lay eggs	Give birth
flamingo	bat
housefly	dolphin
sea turtle	hamster
X	Y

	X	Y
(1)	toad	scaly anteater
(2)	duckbill platypus	elephant
(3)	lizard	grasshopper
(4)	guppy	snake

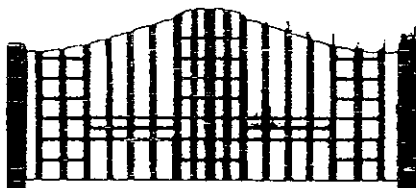
7. Which one of the following objects is soft and floats on water?

- (1) eraser
- (2) sponge
- (3) iron nail
- (4) glass marble

8. The diagrams below show some objects:



iron rings



house gate



cooking pot



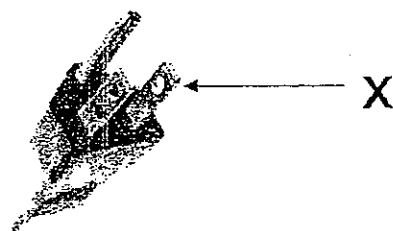
screw

What are the physical properties they have in common?

- (A) hard.
- (B) flexible
- (C) fragile
- (D) waterproof

- (1) A and B
- (2) B and D
- (3) B and C
- (4) A and D

9. The diagram below shows a 3-pin plug. Which one of the following materials is used to make the part of the plug labelled "X"?



- (1) metal
- (2) wood
- (3) plastic
- (4) ceramic

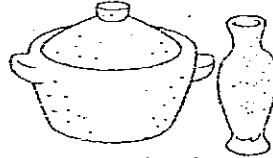
10. The objects below share a common physical property.



bowl and dish
made of ceramic



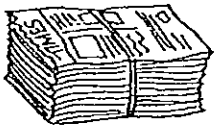
glass and beaker
made of glass



pot and vase
made of clay

Which one of the following statements below is correct?

- (1) They are flexible.
 - (2) They are transparent.
 - (3) They can float in water.
 - (4) They can break easily when dropped.
11. Without opening ^{the} bottle cap, Mrs Tan knew that she needed to refill the salt in the bottle.
Which of the following materials is the bottle made of?
- (1) wood
 - (2) tin
 - (3) clear plastic
 - (4) aluminium
12. Which one of the following statements is true?
- (1) Wood is strong and flexible.
 - (2) Plastic is light and waterproof.
 - (3) All materials are hard and strong.
 - (4) Clear glass does not allow light to pass through easily.
13. Which of the following objects can be recycled?



(A) newspapers



(B) clothes



(C) metal pot



(D) drink can

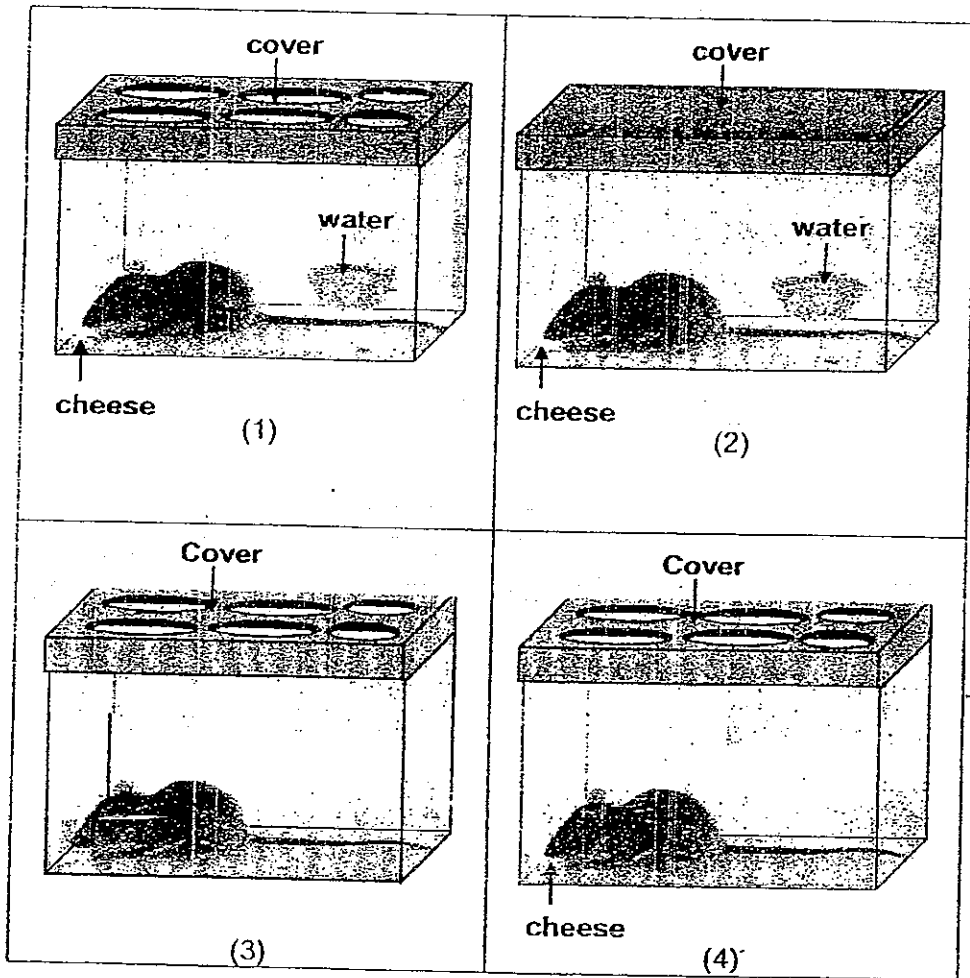
- (1) A and C only
- (2) B and C only
- (3) A, B and D only
- (4) A, C and D only

14. Which of the following can be placed in the same group?

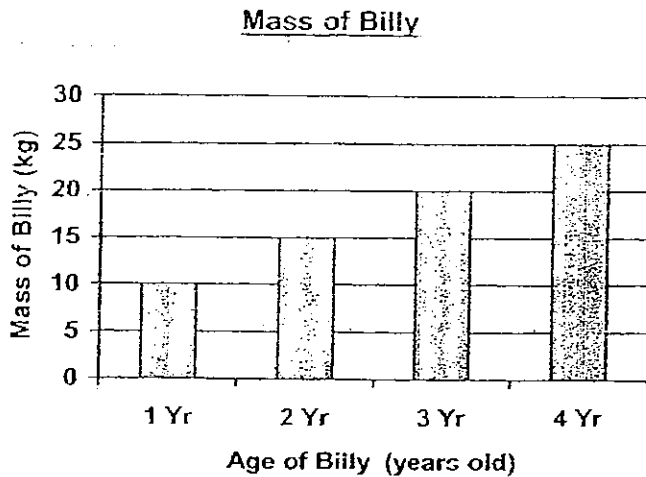
- (A) Bees
- (B) Cloud
- (C) Butterfly
- (D) Chameleon

- (1) A and B
- (2) C and D
- (3) A, B and C
- (4) A, C and D

15. In the following experiment, the mice are kept in tanks under different conditions. Which mouse will survive after **one** week?



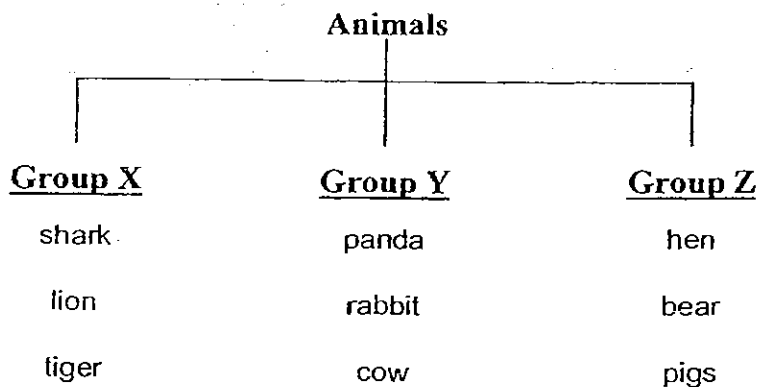
16. The graph below shows the mass of Billy over a period of 4 years.



Based on the graph above, which of the following statements is most likely to be **true**?

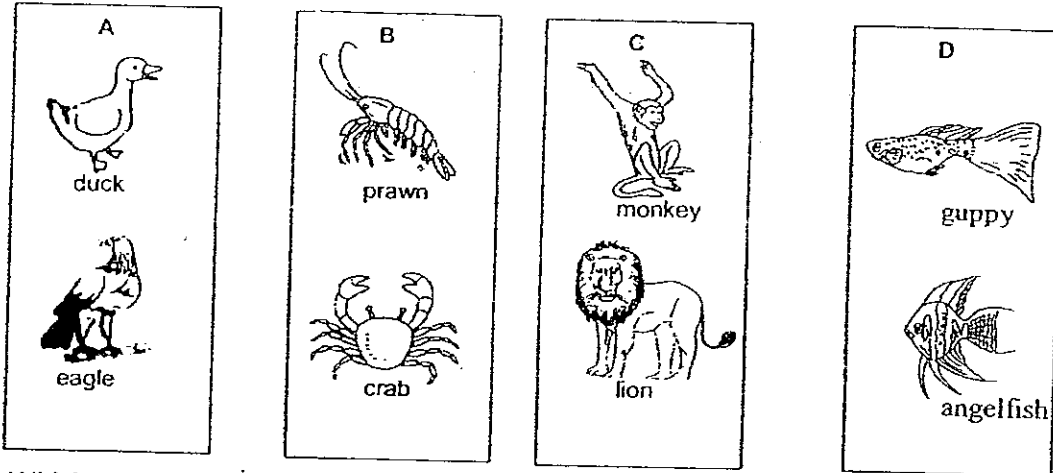
- (1) There was a decrease in Billy's mass between one and two years old.
- (2) Billy's mass remained constant between two and three years old.
- (3) Billy had a mass of 25 kg when he was three years old.
- (4) When Billy grew, there was an increase in his mass.

17. The animals in the classification table below are grouped based on



- (1) what they eat
- (2) where they live
- (3) how they move
- (4) how they reproduce

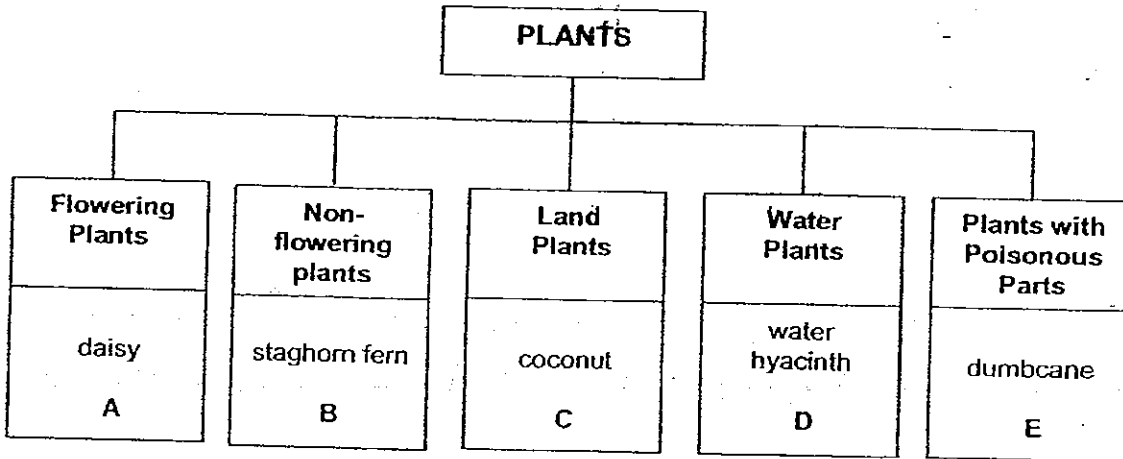
18. Study the classification table of the animals given below.



Which one of the above groups can the penguin be placed in?

- (1) A (2) B
(3) C (4) D

19.



Which of the following best represent the plant A, B, C, D and E respectively?

	A	B	C	D	E
(1)	rose	lotus	flame of the forest	pitcher plant	moss
(2)	orchid	moss	rain tree	duckweed	elephant's ear
(3)	daisy	tree fern	lotus	pong pong	cattail
(4)	chrysanthemum	rubber	moss	hydrilla	lotus

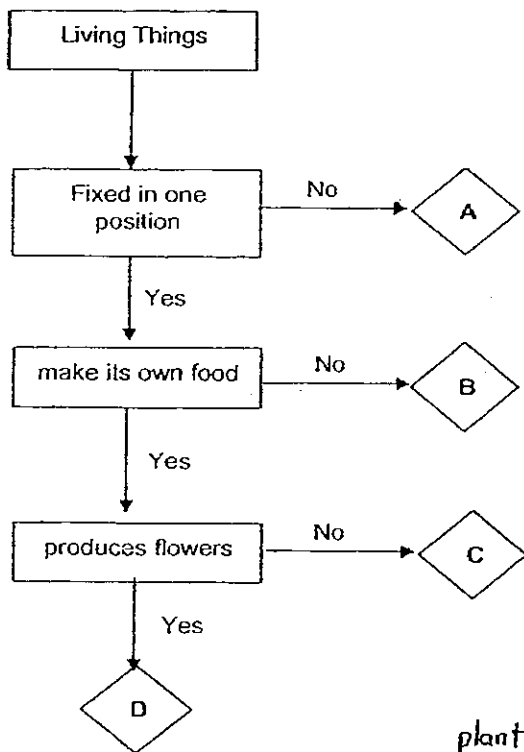
20. Candy observed two animals and listed her observations below.

Animal A	Animal B
body is covered with hair	body is covered with feathers
gives birth to young alive	lay eggs
can fly	can swim

Which two animals could most possibly be **Animal A** and **B** respectively?

	Animal A	Animal B
(1)	Bear	Ant
(2)	Bat	Penguin
(3)	Swallow	Guppy
(4)	Frog	Tadpole

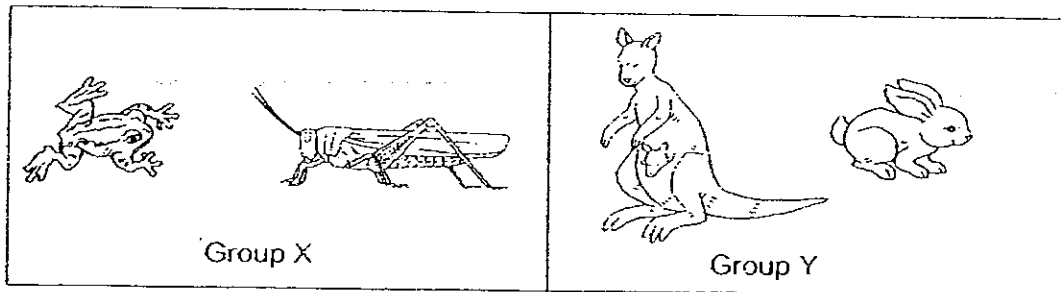
21. Study the flow chart below.



Which of the following living things can **C** most likely to be?

- | | |
|-----------------|----------------|
| (1) horse | (2) mango tree |
| (3) bread mould | (4) true moss |

22.

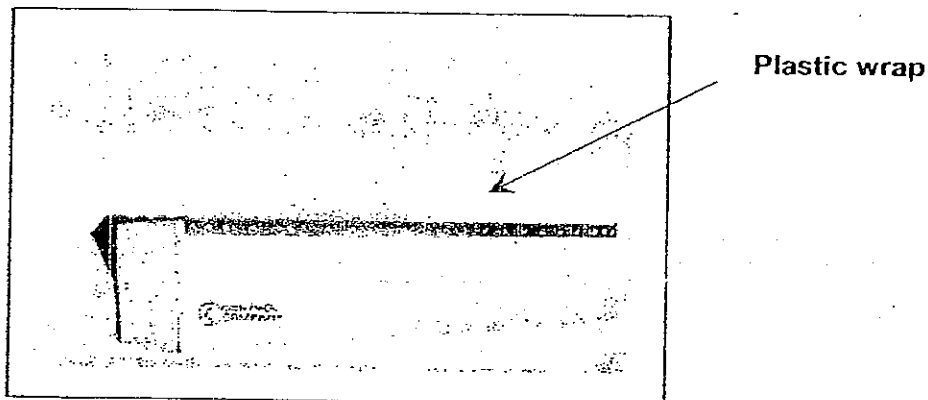


Observe the two groups of animals shown in the above diagram.

How are the above animals grouped?

- (1) The way they reproduce their young.
- (2) The types of food the animals feed on.
- (3) The number of limbs the animals have.
- (4) The way in which the animals move around.

23. Which of the following properties of plastic are most likely the reasons for it to be used for wrapping food?



A	light
B	waterproof
C	transparent
D	can absorb water

- (1) A and D only
- (2) A, B and C only
- (3) C and D only
- (4) B, C and D only

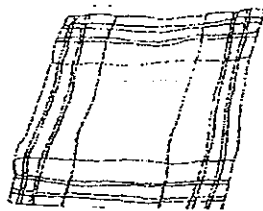
24. Study the classification table below.

<u>Group P</u>	<u>Group Q</u>	<u>Group R</u>
eraser	ceiling fan	silk blouse
wooden pencil	disposable fork	woollen scarf
storybook	Plastic chair	leather wallet

Choose the most suitable heading for Groups P, Q and R.

	<u>Group P</u>	<u>Group Q</u>	<u>Group R</u>
(1)	materials that comes from plants	man-made materials	materials that comes from animals
(2)	natural materials	materials that comes from plants	materials that comes from animals
(3)	materials that was never alive	natural materials	materials that was once alive
(4)	materials that was once alive	materials that was never alive	man-made materials

25.

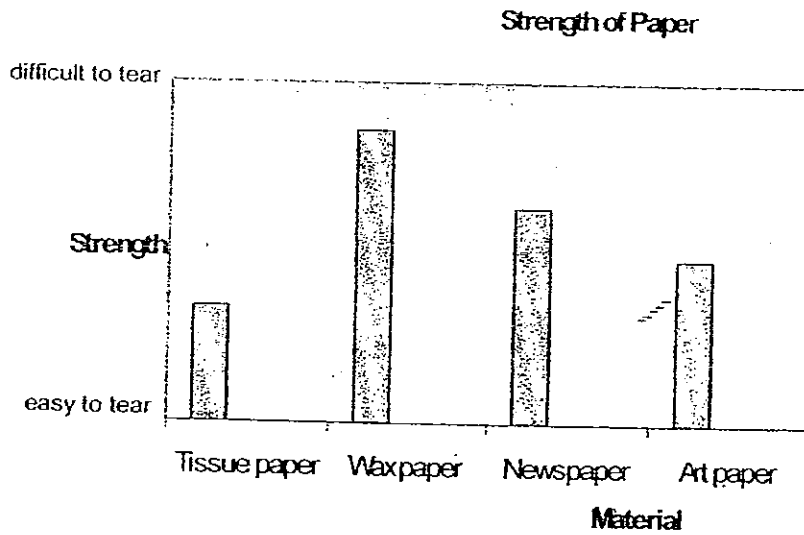


cotton handkerchief

Which one of the following statements is **not** true about the cotton handkerchief?

- (1) It is soft.
- (2) It tears easily.
- (3) It absorbs sweat very well.
- (4) It is very light to carry around.

26. The bar graph below shows the strength of 4 different types of paper.



Which is considered to be the toughest?

- (1) tissue paper
- (2) wax paper
- (3) newspaper
- (4) art paper

27. The table below shows the property of the materials used to make each object. Which one of the following is **incorrect**?

	Object	Material	Properties
1.	anchor	metal	sink
2.	house	wood	strong
3.	water bottle	plastic	waterproof
4.	eraser	rubber	fragile



NAN HUA PRIMARY SCHOOL
SEMESTRAL ASSESSMENT 1
PRIMARY THREE
SCIENCE 2008

Name : _____ ()

Class : Primary 3 ()

MARKS	
	40

SECTION B: (40 marks)

Write your answers to question 31 to 46.

The number of marks available is shown in brackets [] at the end of each question or part question.

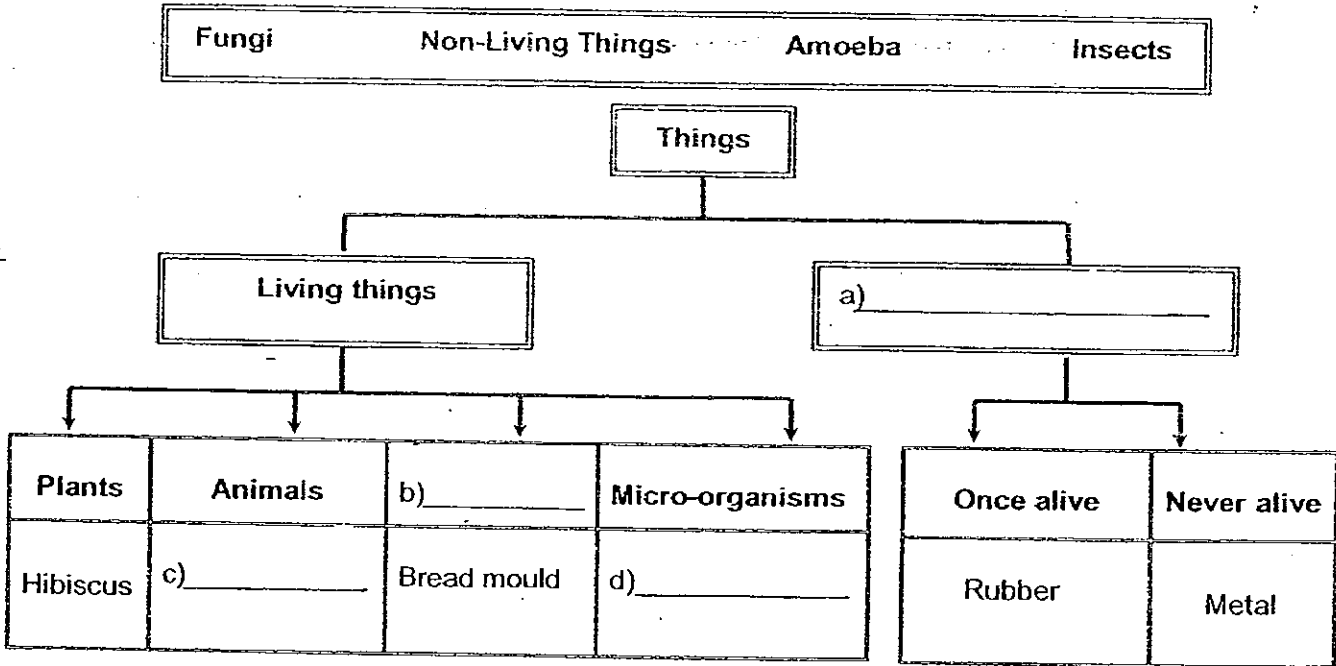
31. The following statements are about living things.

Write 'T' if the statement is true and 'F' if the statement is false. [4 marks]

- a) Only animals that swim need water to survive. ()
- b) Animals move from place to place to escape from danger. ()
- c) A diver can breathe underwater with the aid of an oxygen tank. ()
- d) Animal and plants are alike as they need sunlight for photosynthesis. ()

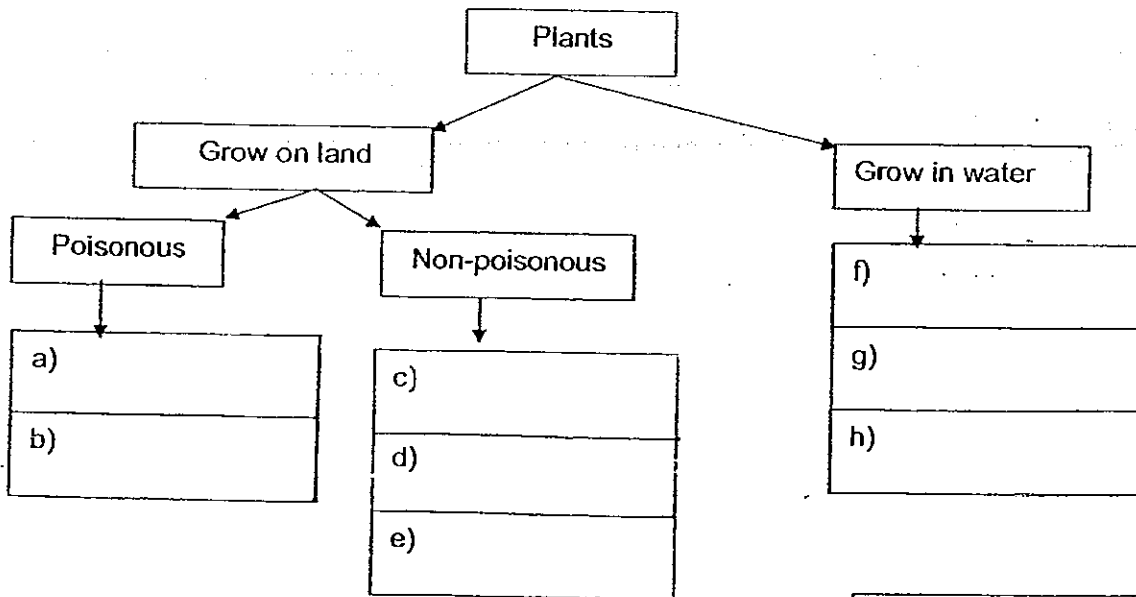
Score	4
-------	---

32) Complete the classification table below using the words listed in the box. [2 marks]



33. Classify the following plants into the correct box. [4 marks]

hibiscus	water hyacinth	duckweed	orchid
pong pong	hydrilla	dumbcane	ixora



Score	6
-------	---

34. The diagrams below show an owl and a bat.



owl



bat

a) Write down **one physical similarity** between the two animals. [1 mark]

b) Write down **two observable differences** between the two animals. [2 marks]

i)

ii)

Score	<hr/>
	3

35. Look at the picture below.



leaves Mimosa

(a) What will happen to the leaves of the mimosa plant when we touch them? [1 mark]

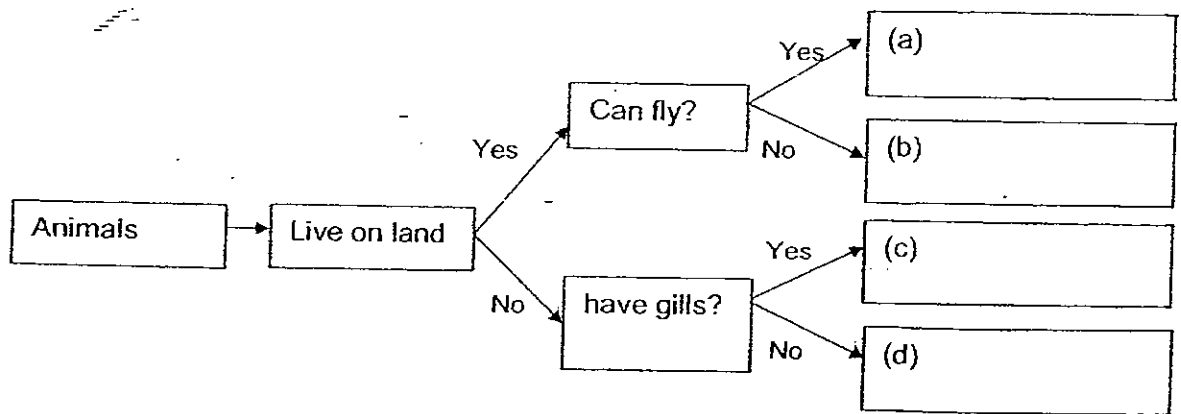
(b) What is the characteristic of living things that can be observed from your answer in (a)? [1 mark]

(c) List one other characteristic of living things. [1 mark]

Score	3
-------	---

36. Complete the flow chart below correctly with the names of the animals given. [2 marks]

whale rhea kingfisher shark



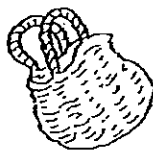
37. The following shows four bags made of different materials.



Paper bag



Plastic bag



Rattan bag



Woolen Bag
Woolen

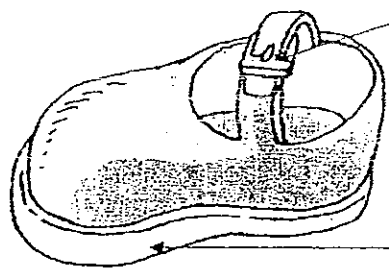
(a) Which bag should be used to contain a freshly bought fish from the supermarket? [1 mark]

(b) Give a reason for your answer in (a). [1 mark]

Score	4
-------	---

38. Observe the diagram of a shoe below.

Write in the box the material most suitable to make parts X and Y. [2 marks]



X:

Y:

39. Study the diagrams below carefully.



Diagram A



Diagram B

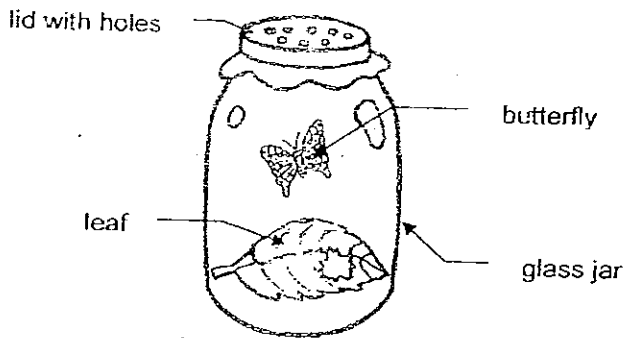
(a) Which diagram shows a living thing? [1 mark]

(b) Twenty years from now, what difference would you observe between the two things shown in the diagrams above? [1 mark]

(c) Write down the characteristic of living things that is observed in your answer in (b). [1 mark]

Score	<input type="text"/>
	5

40. Francis found a butterfly in the garden and decided to take it to school to show her friends.



She put the butterfly in a glass jar with some leaves. Then she made some holes on the lid of the jar.

(a) Give a reason why Francis made holes on the lid. [1 mark]

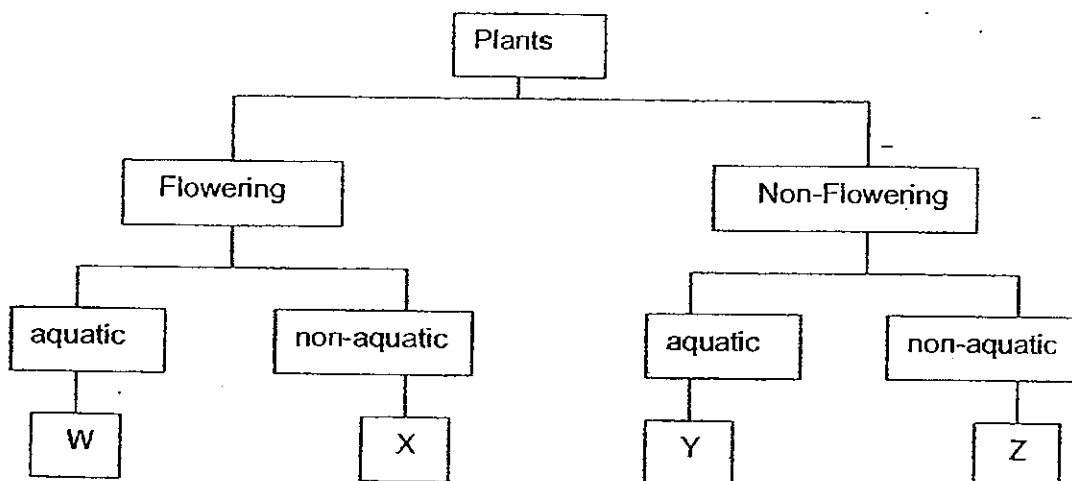
(b) What will happen to the butterfly after 1 week? [1 mark]

(c) Give a reason for your answer in (b) [1 mark]

Score	3
-------	---

41. The following table gives information on 4 plants A, B, C and D, based on two characteristics. A tick (✓) shows that the plant has the characteristics.

Characteristic \	A	B	C	D
Bear flowers		✓		✓
Grows on land	✓			✓



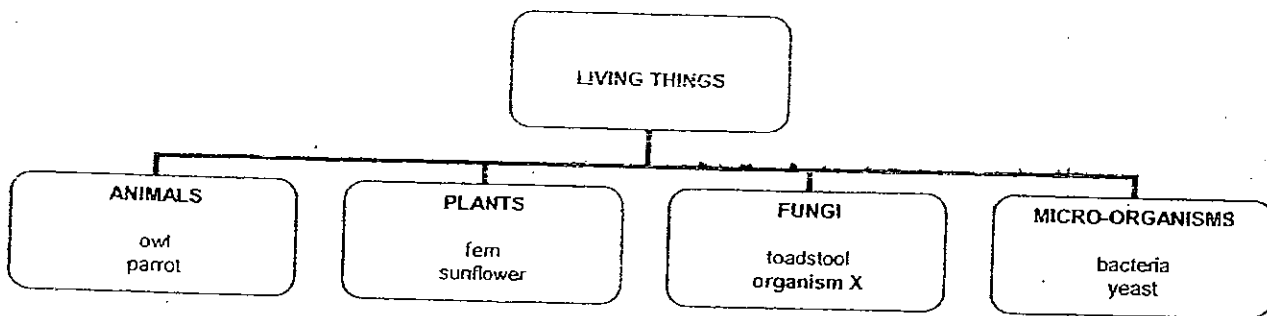
From the information above, where do plant B and C belong in the classification table above? Fill in the box with the correct letter (W, X, Y or Z) that represents each plant. [2 marks]

(a) Plant B -

(b) Plant C -

Score	2
-------	---

42. The following diagram shows a classification chart of living things



a) Which group of living things can make their own food? [1 mark]

b) Name one example of organism X. [1 mark]

43. a) Give one reason to explain why fish tanks are usually made of glass? [1 mark]

b) State one disadvantage of glass. [1 mark]

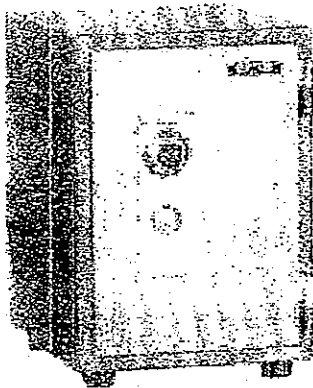
Score	<hr/>
	4

44. Materials W, X, Y and Z were tested for their properties. The results are shown below.

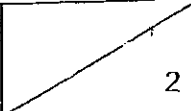
Properties	Materials			
	W	X	Y	Z
Hard	✓	✓		
Strong	✓			
Flexible			✓	✓
Floats on water				✓
Fireproof	✓		✓	

a) What are the properties of the material identified as Z? [1mark]

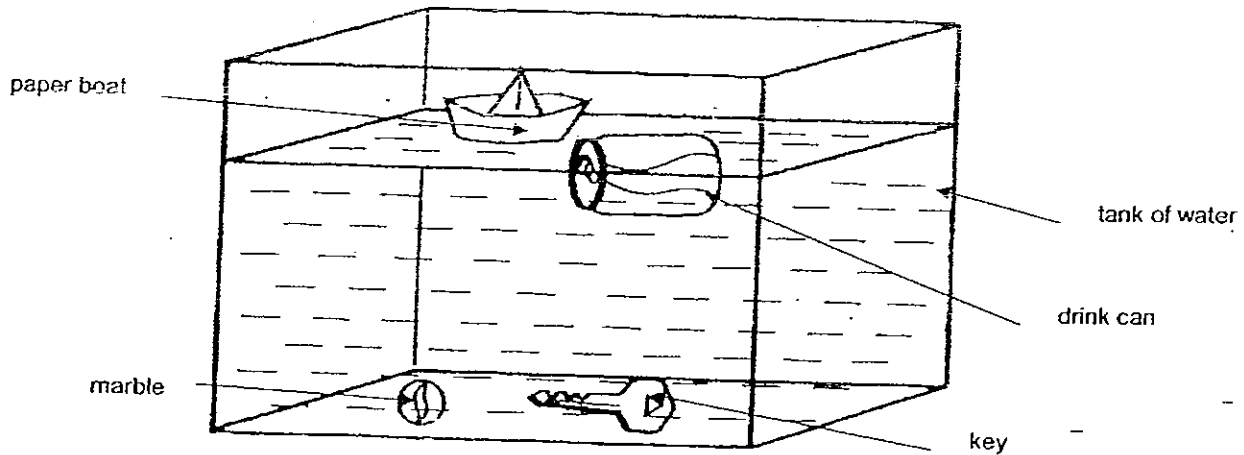
b) Look at the object below.



Which material (W, X, Y or Z) would be most suitable to be used to make a safe as shown above?
[1 mark]

Score	
	2

45. Cindy filled a tank of water. She threw some objects into the water and observed what happened to them. The diagram below shows the result of her experiment.



She then tabulated the objects into two groups as follows.

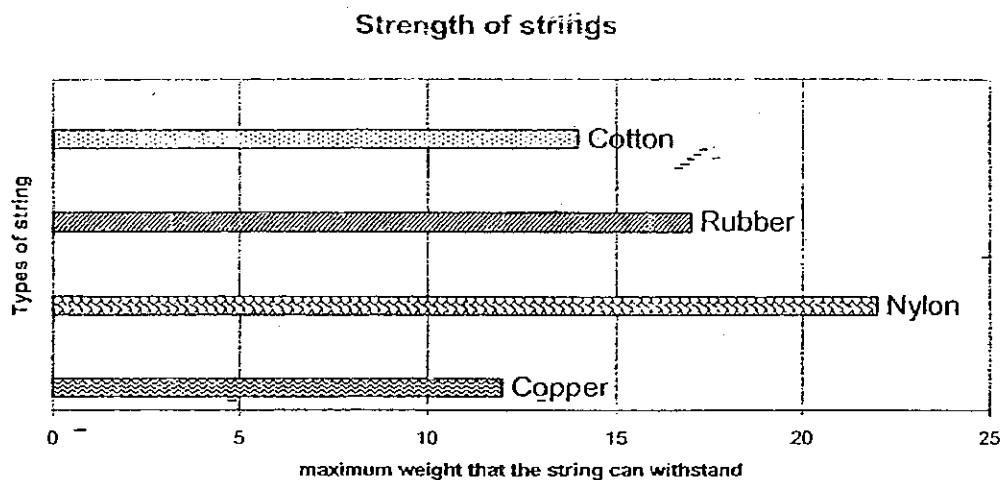
Group R	Group S
paper boat	marble
drink can	key

a) How are the objects grouped into Group R? [1 mark]

b) What material do you think is the marble most likely to be made of so that it sank? [1 mark]

Score	2
-------	---

46. The graph below shows the amount of weight each type of string can hold before they break.

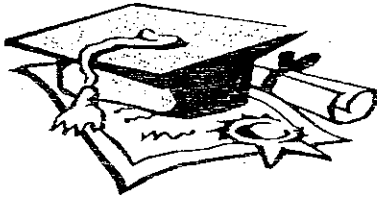


- a) Using the results from the graph, which string do you think is the **most** suitable string to be used on a fishing rod for fishing in the deep sea? [1 mark]

- b) Give a reason for your answer in (a). [1 mark]

Score	2
-------	---

END OF PAPER



ANSWER SHEET

EXAM PAPER 2008

SCHOOL : NAN HUA PRIMARY SCHOOL
SUBJECT : PRIMARY 3 SCIENCE

TERM : SA 1

Q1	Q2	Q3	Q4	Q5	Q6	Q7	Q8	Q9	Q10	Q11	Q12	Q13	Q14	Q15	Q16	Q17
4	2	4	3	2	2	2	4	1	4	3	2	4	4	1	4	1

Q18	Q19	Q20	Q21	Q22	Q23	Q24	Q25	Q26	Q27	Q28	Q29	Q30
1	2	2	4	1	2	1	2	2	4	2	1	3

31) a)F b)T c)T d)F

32) a)Non-Living Things b)Fungi c)Insects d)Amoeba

33) a)Pong pong b)dumbcane c)hibiscus d)orchid
e)ixora f)water hyacinth g)duckweed
h)hydrilla

34) a)Both can fly.
b) i)The owl has a beak but the bat does not have a beak.
ii)The owl has feathers but the bat has hair.

35) a)It will close its leaves.
b)Living things can respond to changes.
c)Living things need air, food and water to survive.

36) a)King fisher b)rhea c)shark d)whale

37) a)The plastic bag. b)It is waterproof.

- 38) X = Metal Y = Rubber
- 39) a) Diagram B
b) Diagram A would not grow but Diagram B would grow bigger.
c) Living things can grow.
- 40) a) Allow air to enter the glass as living things need air to live.
b) It will die.
c) It does not have water to drink.
- 41) a) W b) Y
- 42) a) Plants b) Mushroom
- 43) a) It is waterproof.
b) It will break when dropped.
- 44) a) It is flexible and floats on water.
b) Material W.
- 45) a) It can float.
b) The material is glass.
- 46) a) Nylon.
b) It can hold the most weight.