

ANGLO-CHINESE SCHOOL  
(JUNIOR)



SEMESTRAL ASSESSMENT 1 (2012)  
PRIMARY 3

SCIENCE

BOOKLET A

Monday

14 May 2012

1 hour 30 minutes

Name : \_\_\_\_\_ ( )

Class : P3 \_\_\_\_\_

**INSTRUCTIONS TO PUPILS**

**DO NOT TURN OVER THE PAGES UNTIL YOU ARE TOLD TO DO SO**

Follow all instructions carefully.

There are 25 questions in this booklet.

Answer ALL questions.

**INFORMATION FOR PUPILS**

The total marks for this booklet is 50.

The total time for Booklets A and B is 1 hour 30 minutes.

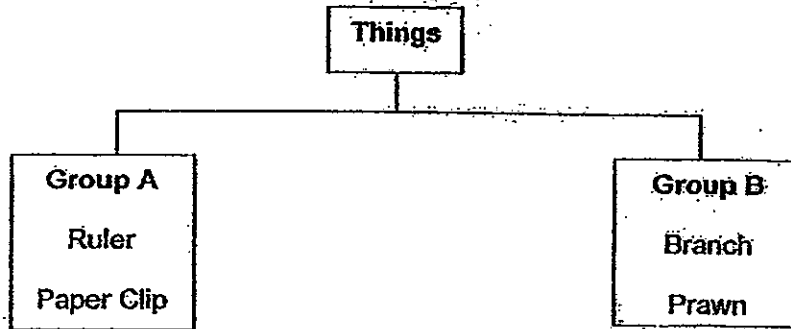
**This question paper consists of 12 printed pages. (Inclusive of cover page)**



**Section A ( 50 marks)**

For each question from 1 to 25, four options are given. One of them is the correct answer. Choose the correct option (1, 2, 3 or 4) and shade the correct oval on the Optical Answer Sheet (OAS).

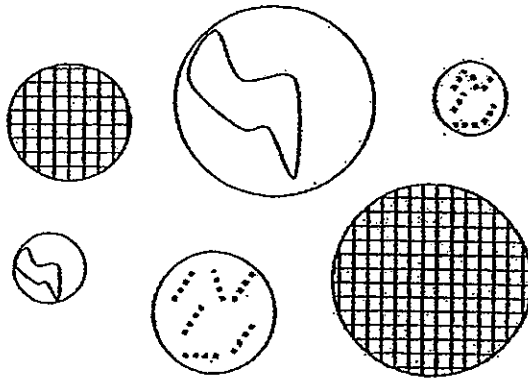
1 The diagram below shows how some things have been classified.



Which of the following things can be classified under Group B?

- (1) fork
- (2) mug
- (3) button
- (4) peanut

2 Peter was asked to put the following things shown below into three groups.

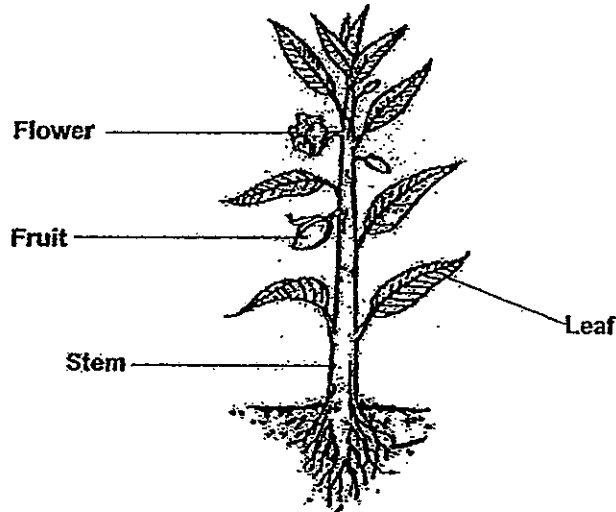


Which of the following characteristics can be used to group them?

- A Size
  - B Shape
  - C Pattern
- (1) A and B only
  - (2) A and C only
  - (3) B and C only
  - (4) A, B and C



6 The diagram below shows a plant. If the \_\_\_\_\_ is removed, the plant can still make food.

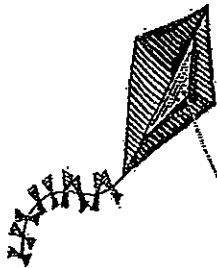


- (1) leaf
- (2) stem
- (3) roots
- (4) flower

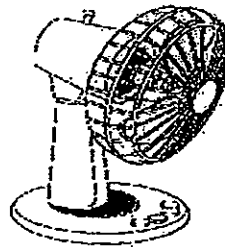
7 Look at the objects below.



marble



kite



fan

Which of the following statements explain why the marble, kite and fan are non-living things?

- A They cannot die.
- B They cannot reproduce.
- C They can move on their own.
- D They can respond to changes.

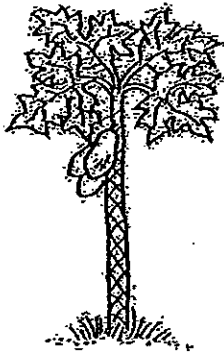
- (1) A and B only
- (2) C and D only
- (3) A, B and D only
- (4) A, C and D only

- 8 John put some goldfish into a fish tank. He decided not to buy any more goldfish over the next few weeks. He recorded the number of goldfish over 3 weeks in the table below.

| Week               | 1 | 2 | 3  |
|--------------------|---|---|----|
| Number of Goldfish | 8 | 9 | 10 |

Based on his observation at the end of week 3, what can he conclude about goldfish?

- (1) They can grow.
  - (2) They can reproduce.
  - (3) They need air, food and water.
  - (4) They can move by themselves.
- 9 The diagrams below show some trees.



A



B



C

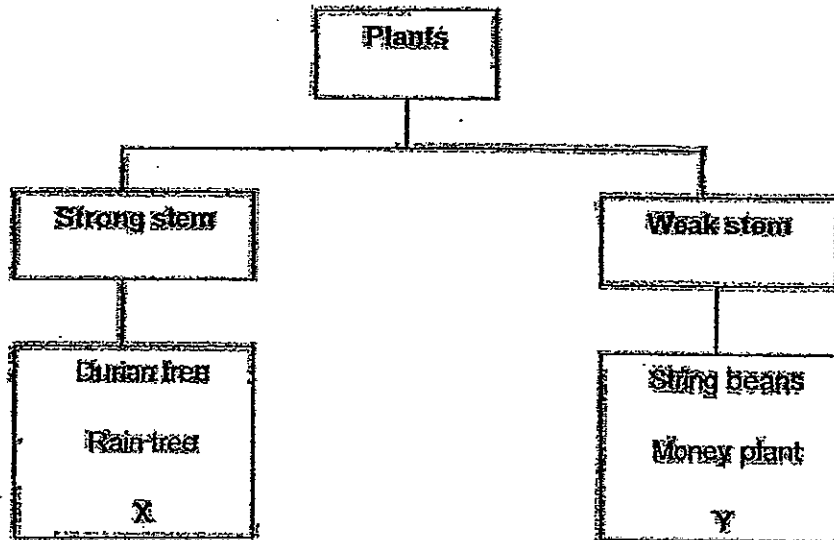


D

Which tree is able to provide the most shade?

- (1) A
  - (2) B
  - (3) C
  - (4) D
- 10 Which part of the plant supports the branches and the leaves?
- (1) Fruit
  - (2) Stem
  - (3) Root
  - (4) Flower

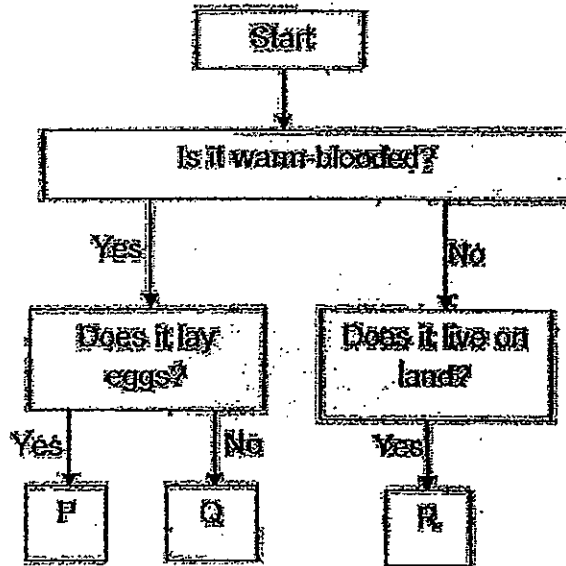
11 The plants below have been grouped according to their type of stems.



Which plants can X and Y be?

|     | X             | Y             |
|-----|---------------|---------------|
| (1) | Lalang        | Angsana tree  |
| (2) | Morning glory | Lalang        |
| (3) | Frangipani    | Morning glory |
| (4) | Angsana tree  | Frangipani    |

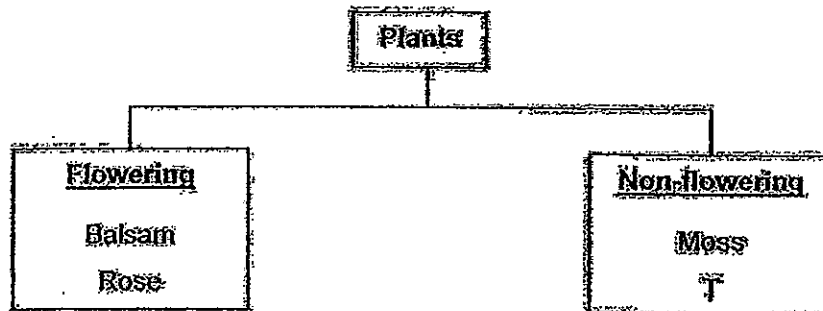
12 Study the flow chart below.



Which of the following statements is true?

- (1) Animal Q lay eggs.
- (2) Animals Q and R live on land.
- (3) Animals P and R are warm-blooded.
- (4) Animal P is warm-blooded and lays eggs.

13 Look at the flowchart below.



Which of the following can T be?

- (1) Grass
- (2) Palm tree
- (3) Hibiscus plant
- (4) Birds' nest fern



14 Which of the following animals does not have the same kind of outer covering as the others?

- (1) crow
- (2) camel
- (3) seagull
- (4) penguin

15 The diagram below shows 2 animals, R and S.



R



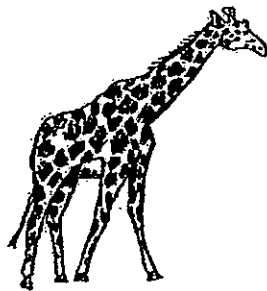
S

Based only on what you can see of the above pictures, how are the animals similar?

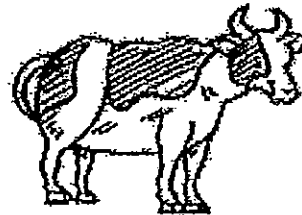
- (1) Both animals eat other animals.
- (2) Both animals move by the same way.
- (3) Both animals need air, food and water.
- (4) Both animals have patterns on their body.

16 Which animal does not belong to the same group as the others?

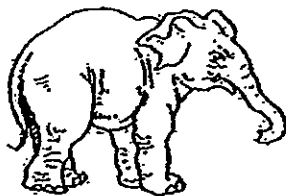
(1) Giraffe



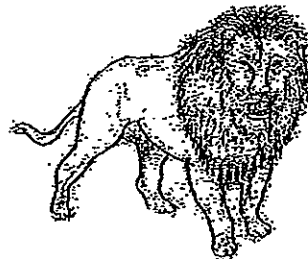
(2) Cow



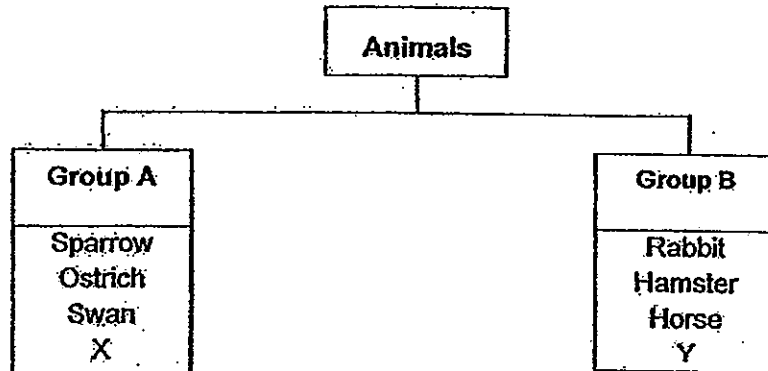
(3) Elephant



(4) Lion



- 17 Study the classification chart below.



Which of the following are likely to be X and Y?

|     | X          | Y          |
|-----|------------|------------|
| (1) | crocodile  | parrot     |
| (2) | parrot     | goose      |
| (3) | goose      | polar bear |
| (4) | polar bear | crocodile  |

- 18 Sean observed some animals and grouped them into 2 different groups, D and E, as shown below.

| Group D                     | Group E                         |
|-----------------------------|---------------------------------|
| Cat<br>Platypus<br>Kangaroo | Eagle<br>Chicken<br>Hummingbird |

Based on the information above, Sean grouped the animals according to \_\_\_\_\_.

- (1) where they live.
- (2) the way they move
- (3) the type of food they eat
- (4) the type of body coverings they have

19 Lisa describes an animal.  
She says, "It has scales. It lays eggs. It breathes through its gills."  
Which animal group does it most probably belong to?

- (1) fish
- (2) birds
- (3) insect
- (4) mammals

20 Isaac found some animals in his garden. His brother told him that they were insects.  
To find out if his brother was right, Isaac decided to observe:

- A their wings
- B what they eat
- C number of legs of each animal
- D number of body parts of each animal

Which of the above activities will help him decide if the animals are really insects?

- (1) A and B only
- (2) A and D only
- (3) B and C only
- (4) C and D only

21 Kendrick grouped his favourite animals into two groups.

| Group J               | Group K                          |
|-----------------------|----------------------------------|
| lion<br>goat<br>camel | guppy<br>swordtail<br>clown fish |

Which one of the following would be a suitable heading for Group J and Group K?

|     | Group J                          | Group K                                 |
|-----|----------------------------------|---|
| (1) | Animals that run                 | Animals that fly                        |
| (2) | Animals that give birth          | Animals that lay eggs                   |
| (3) | Animals that live on land only   | Animals that live in water only         |
| (4) | Animals that feed on plants only | Animals that feed on plants and animals |

22 The table below shows how some living things reproduce. Which is wrong?

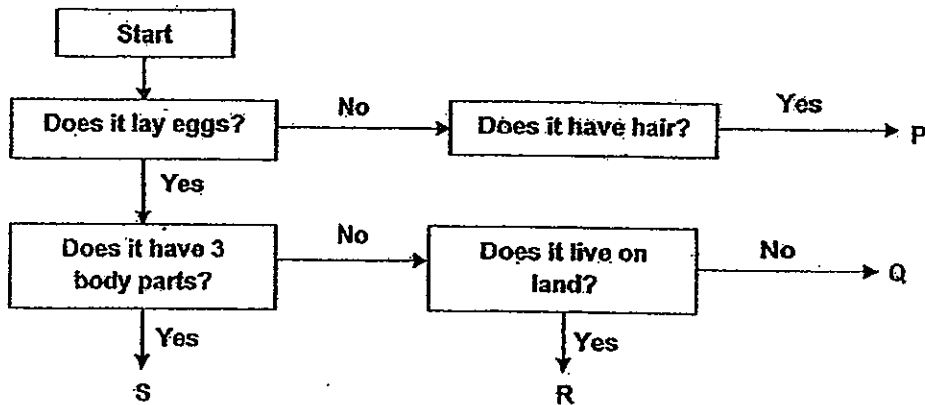
|     | Living Things  | Give birth to young | Lay eggs |
|-----|----------------|---------------------|----------|
| (1) | butterfly      |                     | ✓        |
| (2) | spiny anteater | ✓                   |          |
| (3) | hawk           |                     | ✓        |
| (4) | bat            | ✓                   |          |

23 The outer coverings of most birds can \_\_\_\_\_.

- A help them fly.
- B keep them warm
- C help them look for food

- (1) A and B only
- (2) A and C only
- (3) B and C only
- (4) A, B and C

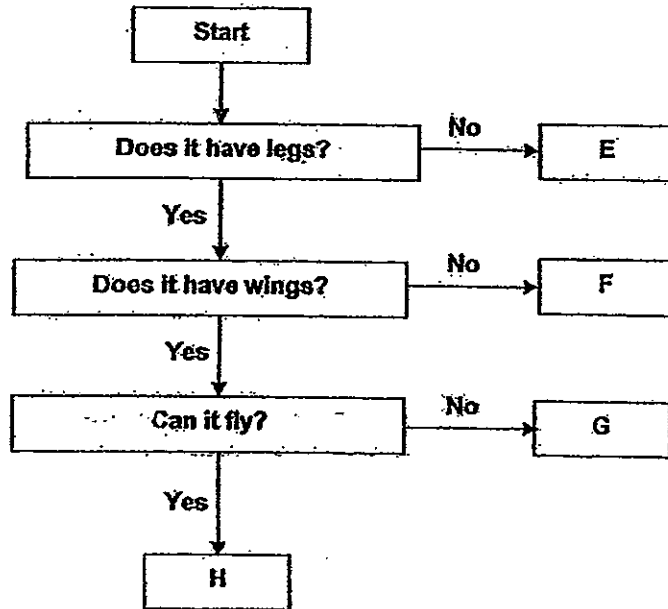
24 Study the flow chart below carefully.



What type of animals could P, Q, R and S most likely be?

|     | P       | Q       | R       | S       |
|-----|---------|---------|---------|---------|
| (1) | Birds   | Fish    | Insects | Mammals |
| (2) | Mammals | Birds   | Fish    | Insects |
| (3) | Mammals | Fish    | Birds   | Insects |
| (4) | Fish    | Mammals | Insects | Birds   |

25 The flowchart below shows how some animals are classified.



Which animals best represent H and F?

|     | Animal H  | Animal F |
|-----|-----------|----------|
| (1) | emu       | snail    |
| (2) | emu       | frog     |
| (3) | dragonfly | frog     |
| (4) | dragonfly | snail    |



ANGLO-CHINESE SCHOOL  
(JUNIOR)



SEMESTRAL ASSESSMENT 1 (2012)  
PRIMARY 3

SCIENCE

BOOKLET B

Monday

14 May 2012

1 hour 30 minutes

Name : \_\_\_\_\_ ( )

Class : P3 \_\_\_\_\_

**INSTRUCTIONS TO PUPILS**

**DO NOT TURN OVER THE PAGES UNTIL YOU ARE TOLD TO DO SO**

Follow all instructions carefully.

There are 14 questions in this booklet.

Answer **ALL** questions.

**INFORMATION FOR PUPILS**

The number of marks is given in brackets [ ] at the end of each question or part question.

The total marks for this booklet is 40.

The total time for Booklets A and B is 1 hour 30 minutes.

This question paper consists of 11 printed pages. (Inclusive of cover page)

|                           |      |
|---------------------------|------|
| BOOKLET A                 | / 50 |
| BOOKLET B                 | / 40 |
| TOTAL                     | / 90 |
| Parent's signature/ Date: |      |

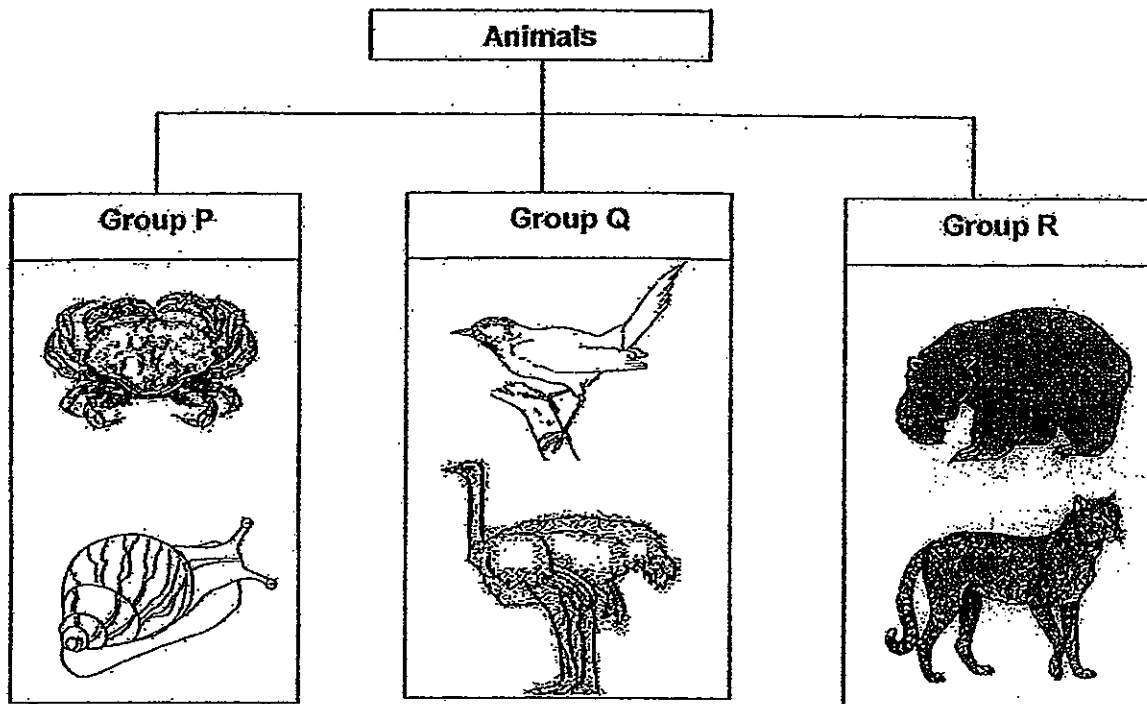




**Section B (40 marks)**

For questions 26 to 39, write your answers in this booklet. The number of marks available is shown in the brackets [ ] at the end of each question or part question.

26 The animals below are classified into three groups, P, Q and R.



(a) Suggest suitable headings for Groups P, Q and R. [3]

Group P: \_\_\_\_\_

Group Q: \_\_\_\_\_

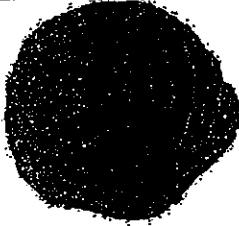


Group R: \_\_\_\_\_

(b) In which group can the prawn be placed? [1]

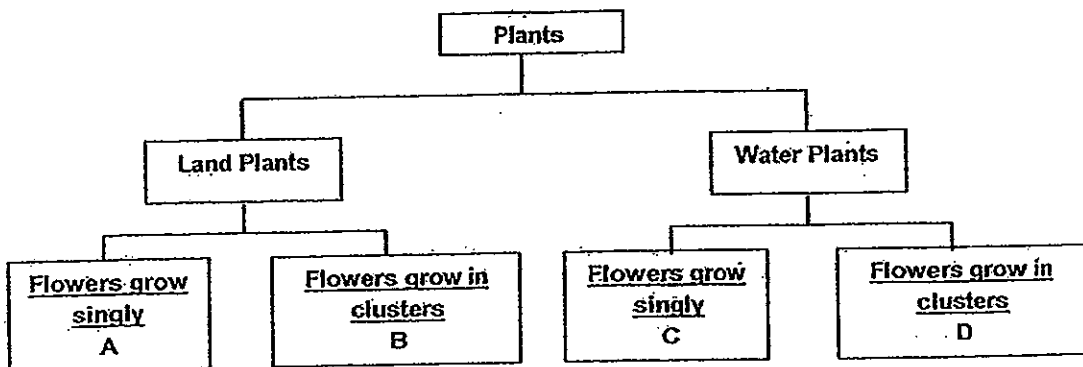
Group: \_\_\_\_\_



27 The diagrams below show some plant parts. Name the part which is usually eaten in the boxes provided. [3]

|   |   |   |
|---|---|---|
|  |  |  |
| Cabbage   | Broccoli  | Apple   |
|   |   |   |

28 Study the classification chart below.



Based on the above chart,

(a) describe 2 characteristics of B. [1]

\_\_\_\_\_

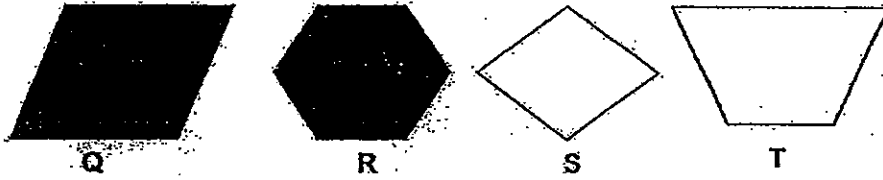
(b) state 1 difference between Plant A and Plant C. [1]

\_\_\_\_\_

(c) state 1 similarity between Plant B and Plant D. [1]

\_\_\_\_\_

29 John was given 4 figures, Q, R, S and T, as shown below.



(a) Which 3 figures can he put into the same group? [1]

\_\_\_\_\_

(b) How were the figures classified in (a)? [1]

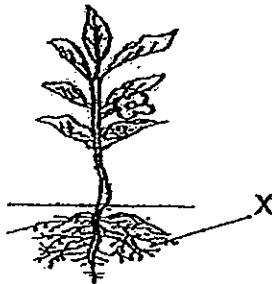
\_\_\_\_\_

(c) John classified the 4 figures into groups X and Y such that each group has equal number of figures. Give the headings for the two new groups. [1]

Group X: \_\_\_\_\_

Group Y: \_\_\_\_\_

30 The diagram below shows a plant.



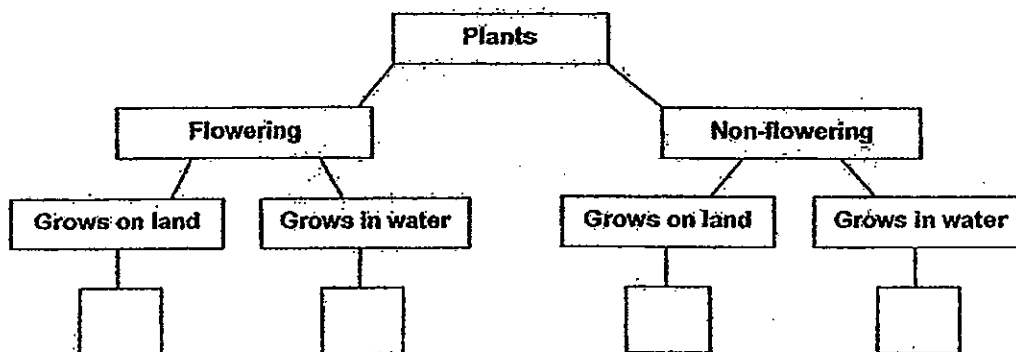
State 2 different functions of part X. [2]

\_\_\_\_\_  
\_\_\_\_\_

- 31 The table below shows some characteristics of 4 plants (E, F, G and H). A tick (✓) shows that the plant has the characteristic.

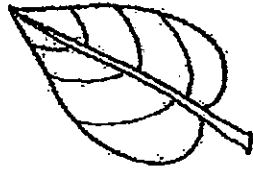
|                 | Plant |   |   |   |
|-----------------|-------|---|---|---|
| Characteristics | E     | F | G | H |
| Bears fruit     |       | ✓ |   | ✓ |
| Grows on land   | ✓     |   |   | ✓ |

- (a) Based on the above information, classify Plants E, F, G and H using the classification chart below. Write your answer in the boxes provided. [2]



- (b) Give an example of Plant H. [1]

32 Clement found a leaf in his school as shown below.

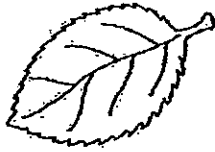


(a) Describe the shape and type of edge the leaf has. [1]

(b) Study the different leaves below.



W



X

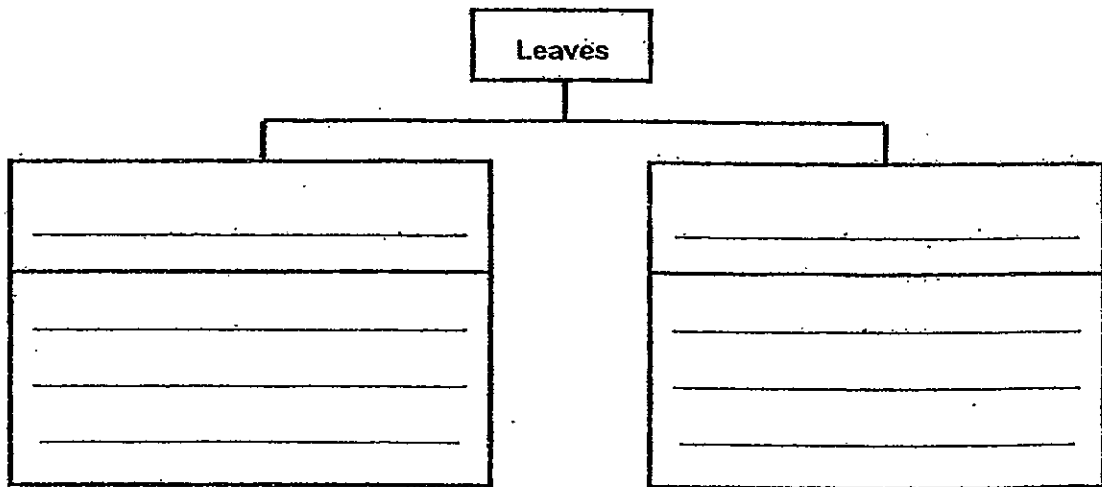


Y



Z

Fill in the blanks with suitable sub-headings and classify the leaves in the classification chart below. [2]



33 The animals below are grouped according to a common characteristic.

|         |     |         |        |
|---------|-----|---------|--------|
| ostrich | bat | penguin | pigeon |
|---------|-----|---------|--------|

(a) What was the common characteristic used to group the animals? [1]

\_\_\_\_\_

(b) The animals were regrouped as shown below. Write suitable headings in the space below. [1]

|       |                              |
|-------|------------------------------|
| _____ | _____                        |
| bat   | pigeon<br>ostrich<br>penguin |

(c) Regroup the animals using the given characteristics below. [1]

|         |            |
|---------|------------|
| can fly | cannot fly |
| _____   | _____      |
| _____   | _____      |
| _____   | _____      |

|  |
|--|
|  |
|--|

34 The diagram below shows a rhinoceros and a platypus.



rhinoceros



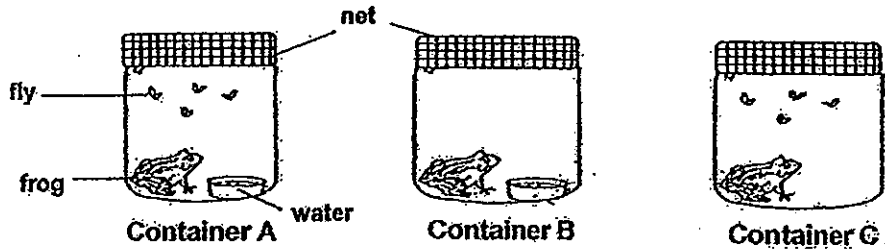
platypus

- (a) Which animal group do the 2 animals belong to? [1]
- 
- (b) How are they different in the way they reproduce? [1]
- 
- (c) Name another animal that belongs to the same group but reproduces in the same way as the platypus. [1]
- 

35 Complete the table by putting a tick (✓) in the correct boxes. [2]

|             | Eat plants only | Eat animals only | Eat both plants and animals |
|-------------|-----------------|------------------|-----------------------------|
| sheep       |                 |                  |                             |
| leopard     |                 |                  |                             |
| chicken     |                 |                  |                             |
| caterpillar |                 |                  |                             |

36 Jake set up the experiment shown below using frogs of similar size.



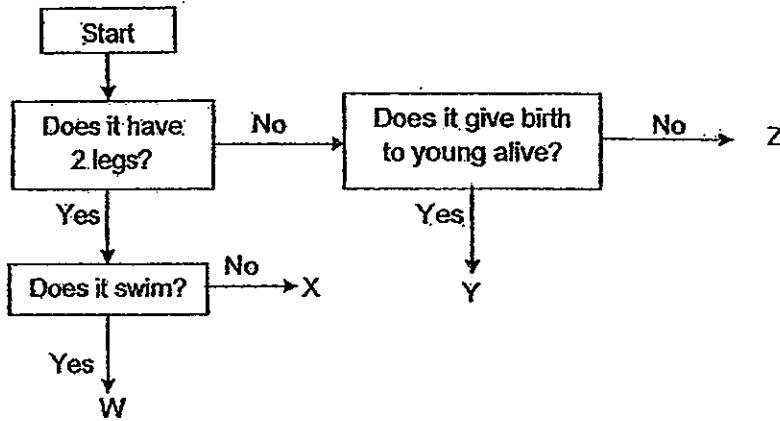
(a) In which container will the frog be able to live the longest? [1]

\_\_\_\_\_

(b) Why did Jake use a net to cover the containers instead of a plastic lid? [1]

\_\_\_\_\_

37 Study the flow chart below.



(a) Use the flow chart to identify the animals below. Write W, X, Y and Z in the boxes. [2]

|      |       |           |      |
|------|-------|-----------|------|
| Duck | Zebra | Angelfish | Hawk |
|      |       |           |      |

(b) Based on the above chart, which animal (W, X, Y, or Z) is most likely to be represented by a molly? Why? [1]

\_\_\_\_\_

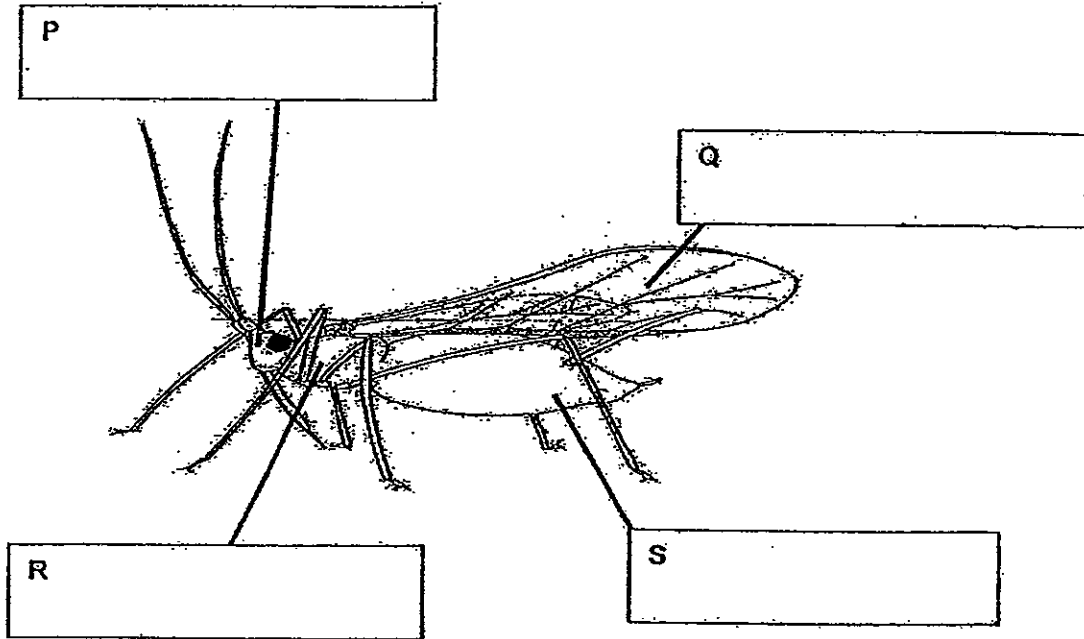
\_\_\_\_\_

|  |
|--|
|  |
|--|



38 The diagram below shows an insect.  
(a) Identify and label the parts P, Q, R and S.

[2]



(b) The diagram below shows Animal T.

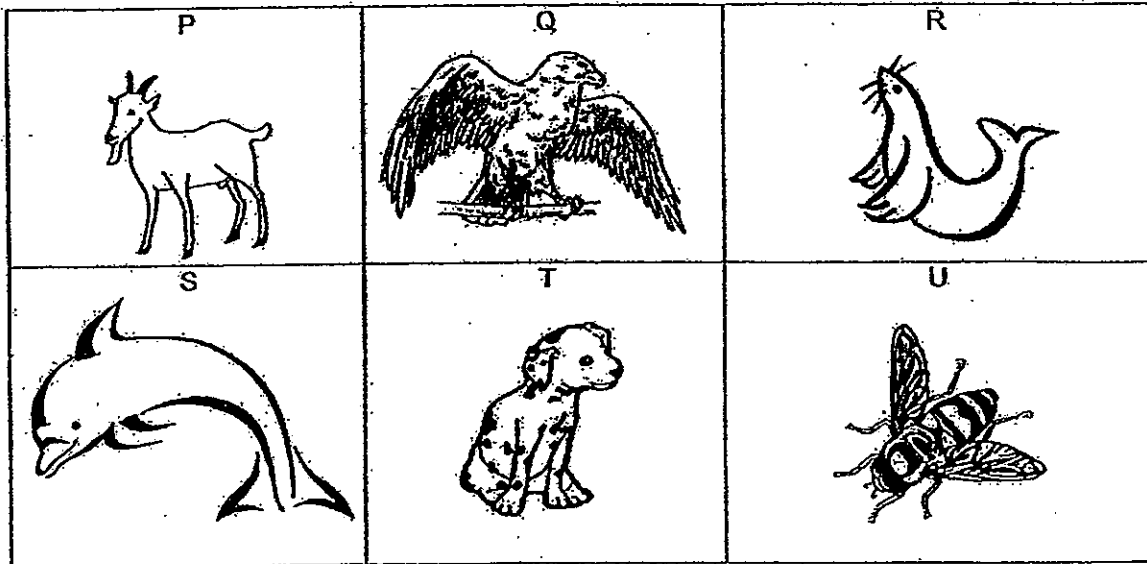


Base on the above diagram, Explain why it is not an insect?

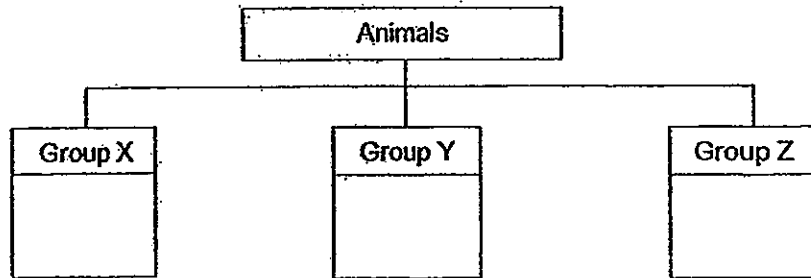
[1]

---

- 39 Peter cuts out some pictures of different animals from a magazine. He groups them according to the body parts that help them to move.



- (a) Peter used the table below to group the animals P to U into Group X, Y and Z. Write the letters P to U in the classification table below. Each group must have an equal number of animals. [1½]



- (b) Give a suitable sub-heading for Groups X, Y and Z. [1½]

Group X: \_\_\_\_\_

Group Y: \_\_\_\_\_

Group Z: \_\_\_\_\_

|  |
|--|
|  |
|--|

# ANSWER SHEET

**EXAM PAPER 2012**

**SCHOOL : ANGLO-CHINESE SCHOOL(JUNIOR)**

**SUBJECT : PRIMARY 3 - SCIENCE**

**TERM : SA 1**

## BOOKLET A

|        |        |        |        |        |        |        |        |        |         |         |         |         |         |         |         |
|--------|--------|--------|--------|--------|--------|--------|--------|--------|---------|---------|---------|---------|---------|---------|---------|
| Q<br>1 | Q<br>2 | Q<br>3 | Q<br>4 | Q<br>5 | Q<br>6 | Q<br>7 | Q<br>8 | Q<br>9 | Q1<br>0 | Q1<br>1 | Q1<br>2 | Q1<br>3 | Q1<br>4 | Q1<br>5 | Q1<br>6 |
| 4      | 2      | 2      | 4      | 3      | 4      | 1      | 2      | 3      | 2       | 3       | 4       | 4       | 2       | 4       | 4       |

|     |     |     |     |     |     |     |     |     |
|-----|-----|-----|-----|-----|-----|-----|-----|-----|
| Q17 | Q18 | Q19 | Q20 | Q21 | Q22 | Q23 | Q24 | Q25 |
| 3   | 4   | 1   | 4   | 3   | 2   | 1   | 3   | 3   |

## BOOKLET B

26. a) Group P: Have shell  
Group Q: Have feathers  
Group R: Have hair/ fur  
b) P

27.

|         |          |       |
|---------|----------|-------|
| Cabbage | Broccoli | Apple |
| leaves  | flower   | fruit |

28. a) B is a land plant and its flowers grow in clusters.  
b) A is a land plant but C is a water plant.  
c) B and D's flowers grow in clusters.

29. a) Q, T and S  
b) They were classified in four edges.  
c) Group X: Black                      Group Y: White

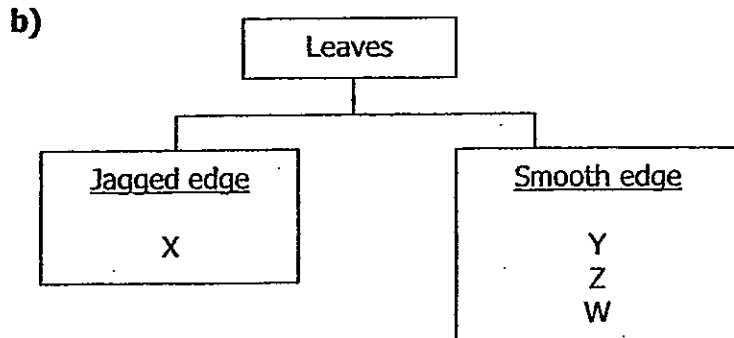
30. To hold the plant firmly to the ground.  
Take in water and dissolved mineral salts.

31. a)

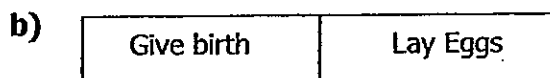


31. b) Mango tree

32. a) It is in a heart shape and it has a smooth edge.



33. a) They have wings.



c)

| Can fly | Cannot fly |
|---------|------------|
| Bat     | Ostrich    |
| Pigeon  | Penguin    |

34. a) Mammals

b) The rhinoceros gives birth to young alive but the platypus lays eggs.

c) Spiny anteater

35.

|             | Eat plants only | Eat animals only | Eat both plants and animals |
|-------------|-----------------|------------------|-----------------------------|
| Sheep       | √               |                  |                             |
| Leopard     |                 | √                |                             |
| Chicken     |                 |                  | √                           |
| Caterpillar | √               |                  |                             |

36. a) Container A.

b) So that the frog will have enough air.

**EXAM PAPER 2012**

**SCHOOL : ANGLO-CHINESE SCHOOL(JUNIOR)**

37. a)

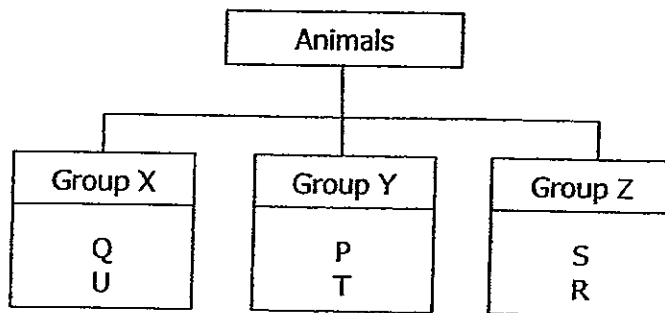
|             |              |                  |             |
|-------------|--------------|------------------|-------------|
| <b>Duck</b> | <b>Zebra</b> | <b>Angelfish</b> | <b>Hawk</b> |
| <b>W</b>    | <b>Y</b>     | <b>Z</b>         | <b>X</b>    |

b) Animal Y. A molly gives birth to young alive and animal Y gives birth to young alive as well.

38. a) P: head Q: wings R: thorax S: abdomen

b) It doesn't have six legs and it only has two body parts.

39. a)



b) Group X: Can fly  
Group Y: Can walk  
Group Z: Can swim

