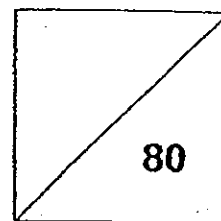




HENRY PARK PRIMARY SCHOOL
2013 SEMESTRAL EXAMINATION 1
SCIENCE PRIMARY 3



Duration of Paper: 1 h 30 min

Name: _____ ()

Parent's Signature: _____

Class: Pr 3 _____

Section A

For each question from 1 to 20, four options are given. One of them is the correct answer. Make your choice (1, 2, 3 or 4). Shade the correct oval (1, 2, 3 or 4) on the Optical Answer Sheet (OAS).

1. Which of the following statements show that living things respond to changes around them?

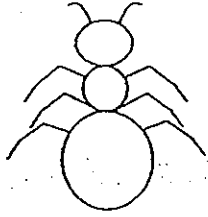
- A: A cat ran away when it saw a dog nearby.
- B: Halim moved his hand away from a glass of hot milk.
- C: Sally shut her eyes when she heard loud thunder.

- (1) A only
- (2) A and B only
- (3) B and C only
- (4) A, B and C

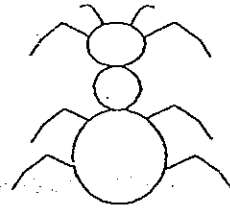
()

2. Which one of the following pictures shows the correct drawing of an insect?

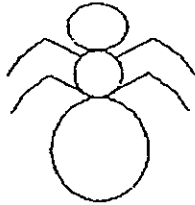
(1)



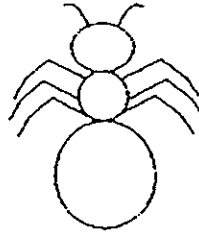
(3)



(2)

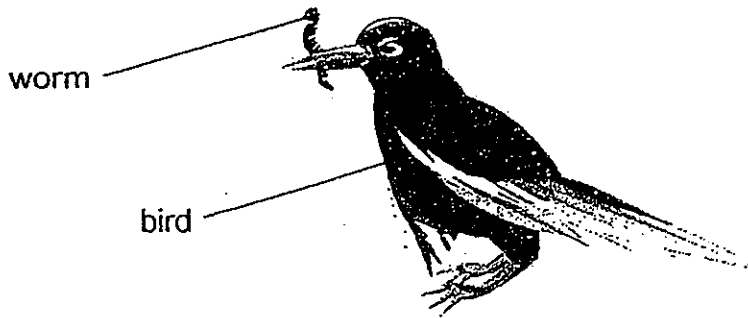


(4)



()

3. Study the diagram below.

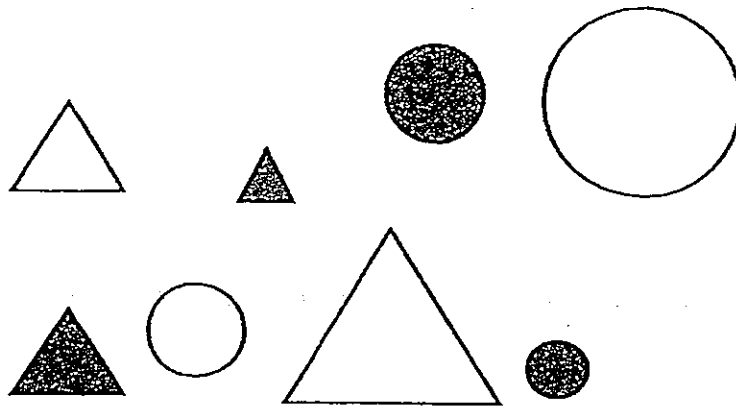


Which characteristic of living things does the bird show by feeding on the worm?

- (1) Living things grow.
- (2) Living things need air.
- (3) Living things need food.
- (4) Living things reproduce.

()

4. Study the diagram below carefully.



How can the objects in the diagram above be classified?

- (1) By size only
- (2) By colour only
- (3) By shape and size only
- (4) By shape, colour and size

5. Study the 3 organisms below carefully.



A: Fern



B: Flowering Plant



C: Fungi

Which statement below describes the organisms above correctly?

- (1) Organisms A, B and C make their own food.
- (2) Organisms A and B bear flowers but C does not.
- (3) Organisms A and C make their own food but B does not.
- (4) Organisms A and B make their own food but C does not.

6. Zahar conducted an experiment using 4 similar slices of bread to find out how quickly bread mould will grow in different conditions.

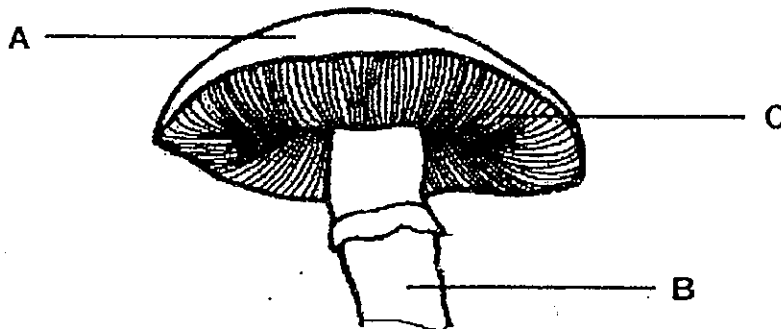
	Condition of place where bread is placed	Amount of moisture on bread
A	Cold	Low
B	Warm	High
C	Warm	Very Low
D	Very Cold	Very Low

On which bread will he see the most amount of bread mould after 6 days?

- (1) A
- (2) B
- (3) C
- (4) D

()

7. The diagram below shows parts of a toadstool.



Which of the following identifies part A, B and C correctly?

	A	B	C
(1)	Cap	Stalk	Gills
(2)	Gills	Cap	Stalk
(3)	Cap	Spores	Stalk
(4)	Cap	Spores	Gills

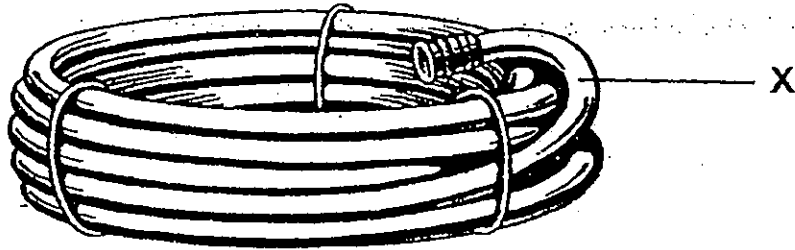
()

8. Mina had 2 similar objects that were equally heavy. She put one object into Bag X and the other into Bag Y. Bags X and Y were made of different materials. After some time, Bag X broke from the weight of the object but Bag Y did not break.

What can Mina conclude about Bag X?

- (1) Bag X is not as hard as Bag Y
- (2) Bag X is not as light as Bag Y
- (3) Bag X is not as strong as Bag Y
- (4) Bag X is not as flexible as Bag Y ()

9. Mrs Lee uses the water hose to water the plants in her garden.



Water hose

Mrs Lee is able to roll up her water hose as shown above because the material used to make part X is _____.

- (1) hard
- (2) light
- (3) strong
- (4) flexible ()

10. The table below shows how some animals are classified according to their characteristics.

Lives on land			
Eats insects		Does not eat insects	
Can fly	Cannot fly	Can fly	Cannot fly
Animal S			Animal T

Based only on the classification table above, which of the following statements correctly describe the differences between Animals S and T?

- A: Animal S can fly while Animal T cannot fly.
- B: Animal S eats insects while Animal T does not eat insects.
- C: Animal T lives on land while Animal S does not live on land.

- (1) A only
- (2) A and B only
- (3) A and C only
- (4) B and ~~D~~ only

()

11. Roy caught 2 different animals, X and Y, which can fly. He identifies correctly that only animal X is an insect.

Which of the following characteristics helped Roy identify animal X as an insect?

- A: Animal X has wings.
- B: Animal X has 6 legs.
- C: Animal X lays eggs.
- D: Animal X has 3 body parts.

- (1) A and D only
- (2) B and D only
- (3) A, B and C only
- (4) B, C and D only

()

12. The table below shows the characteristics of 4 animals, S, T, U and V.

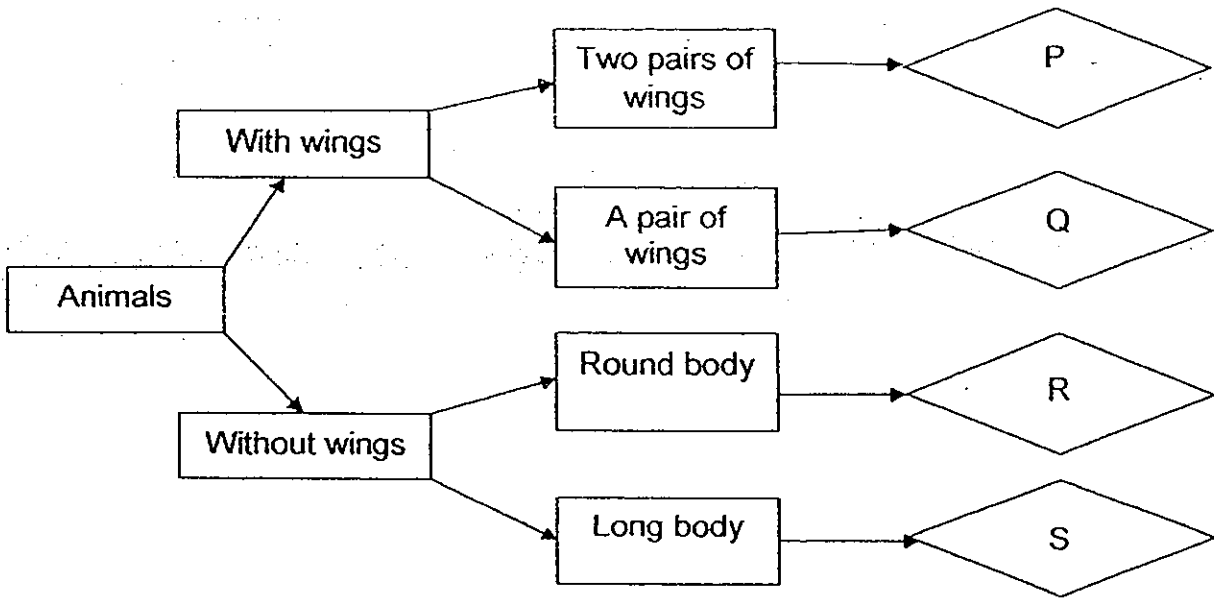
Which animal, S, T, U or V, is a bird?

	Animals	Lay eggs	Has feathers	Live in water	Has wings
(1)	S	X	X	✓	X
(2)	T	✓	X	X	✓
(3)	U	✓	✓	X	✓
(4)	V	✓	X	✓	X

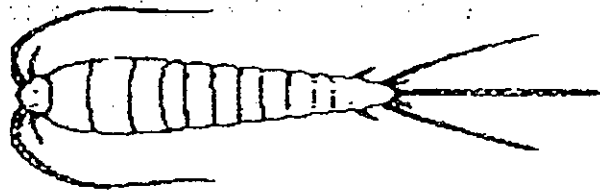
()

A (✓) means it has the characteristics and a (X) means it does not.

13. The flow chart below shows classification of animals into 4 groups, P, Q, R and S.



Using the information from the flow chart above, which of the following groups is Animal A likely to be in?



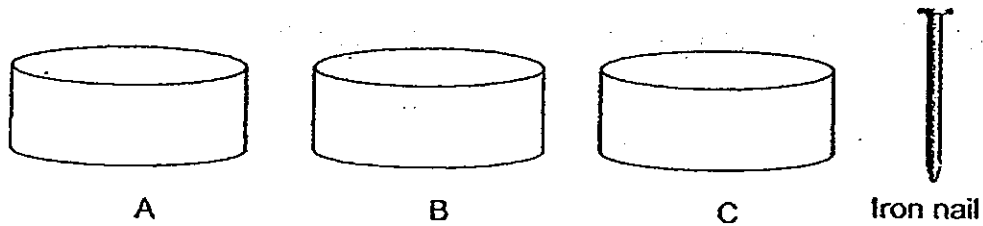
Animal A

- (1) Group P
- (2) Group Q
- (3) Group R
- (4) Group S

()

14. Jenny compared the hardness of 3 containers, A, B and C shown below by scratching them with an iron nail.

She then recorded her observations in the table below, using a tick (✓) to show that there are scratch marks on the containers.



Appearance of containers	Scratch marks found on each container		
	A	B	C
Deeply scratched	X	✓	X
Lightly scratched	X	X	✓
No scratches	✓	X	X

A (✓) means it has scratches and a (X) means it does not have scratches.

Based on the results above, arrange the containers from the softest to the hardest.

	Softest	→	Hardest
(1)	A		B C
(2)	B		C A
(3)	C		B A
(4)	B		A C

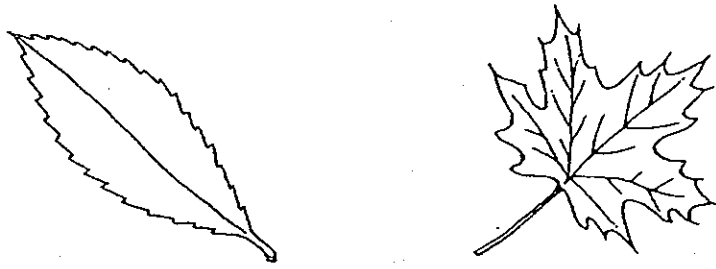
()

15. Which one of the following objects is not made from parts of animals?

- (1) Leather bag
- (2) Silk scarf
- (3) Rubber ball
- (4) Woollen socks

()

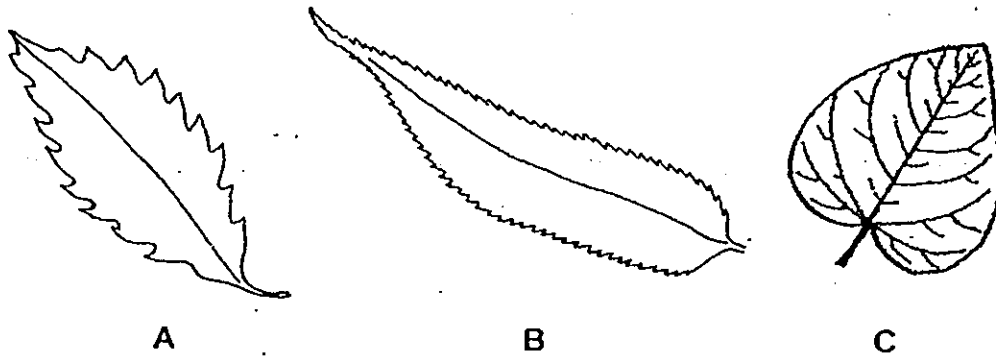
16. The diagram below shows 2 leaves that Ali picked up at the garden.



Ali classified both leaves shown above in the same group.

Look at the 3 leaves shown below.

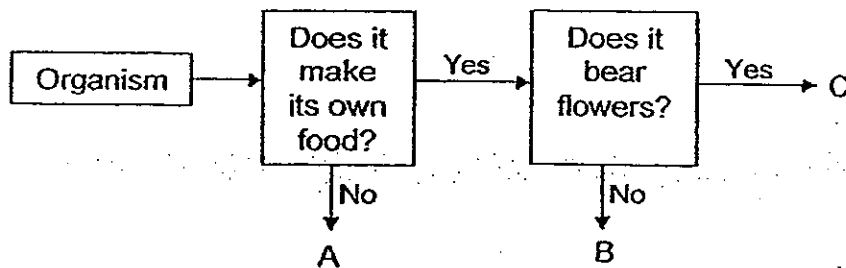
Which of the following is/are more likely to be classified in the same group as the 2 leaves above?



- (1) A only
- (2) C only
- (3) A and B only
- (4) B and C only

()

17. The flow chart below shows 3 organisms, A, B and C.



Based on the flow chart above, which of the following statements is correct?

- (1) Organism B is a flowering plant.
- (2) Organism C reproduces by spores.
- (3) Organism A is a non-flowering plant.
- (4) Both Organisms B and C are able to make their own food. ()

18. The diagram below shows 2 flowering plants X and Y.



Plant X



Plant Y

Which of the following statements about plants X and Y is true?

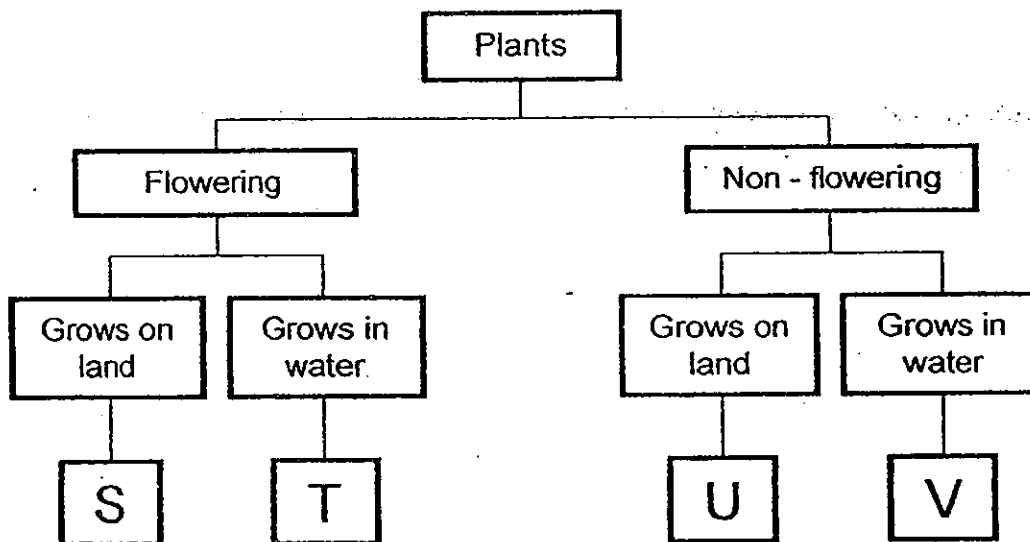
- (1) Plant X needs support but plant Y does not.
- (2) Plant Y needs support but Plant X does not.
- (3) Plant X reproduces by spores but plant Y does not.
- (4) Plant X reproduces by seeds but plant Y does not. ()

19. Nelson studied 4 plants, A, B, C and D, and recorded his observations in the table below.

Plants	Characteristics	
	Bears fruit	Grows on land
A	✓	✓
B	✓	X
C	X	✓
D	✓	✓

A (✓) means it has the characteristics and a (X) means it does not.

Study the classification chart below.

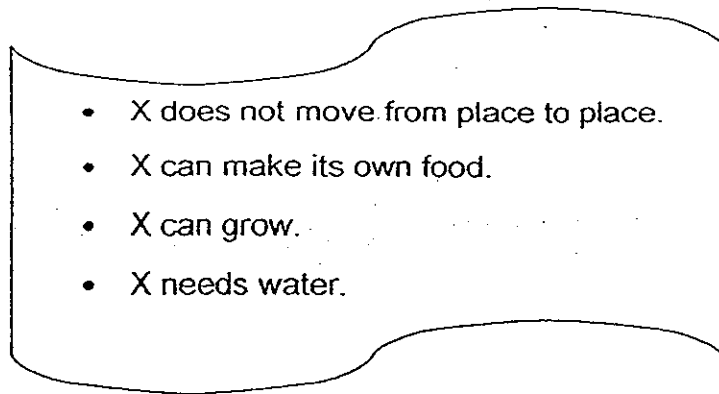


In which box, S, T, U or V, can Plant D be placed in?

- (1) S
- (2) T
- (3) U
- (4) V

()

20. Tom found **Organism X** in his garden. He observed it for a week and wrote down his observations as shown below.



He showed Melissa his observations and she concluded immediately that **Organism X** is a plant.

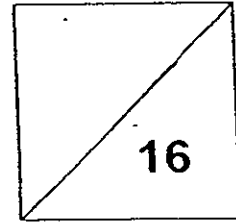
Which of the following observations tells Melissa that **Organism X** is likely to be a plant?

- (1) It needs water.
- (2) It can reproduce.
- (3) It can make its own food.
- (4) It does not move from place to place.

()

End of Booklet A

HENRY PARK PRIMARY SCHOOL
2013 SEMESTRAL EXAMINATION I
SCIENCE
PRIMARY 3



Name: _____ ()

Class: Pr 3 _____

Section B

Write your answers to questions 21 to 26 in the spaces given. (16 marks)

21. Read the following statements carefully.

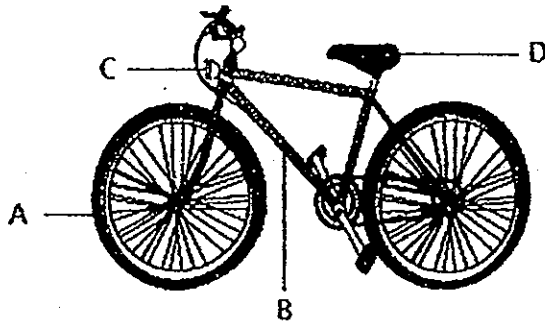
(3m)

In the spaces provided, write 'T' for sentences that are TRUE and 'F' for sentences that are FALSE.

1. All plants bear fruits.
2. Fungi reproduce by spores
3. All mammals are plant-eaters.

22. The diagram below shows a bicycle.

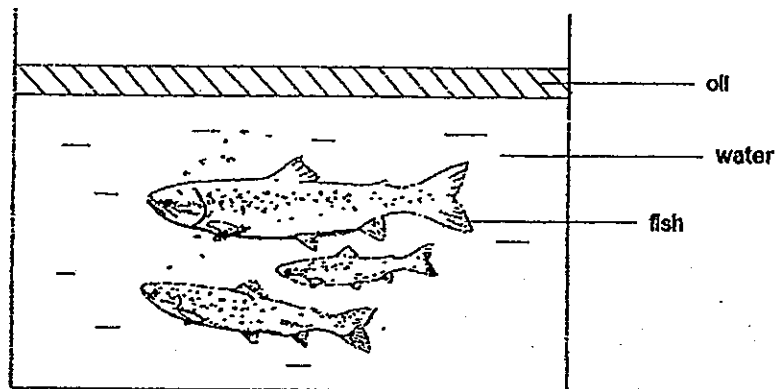
(2m)



From the picture above, choose the correct parts that are made of the following materials and write the letters, A, B, C or D, in the boxes below.

	Material	Part of bicycle
(a)	Metal	
(b)	Rubber	

23. Study the fish tank diagram below.

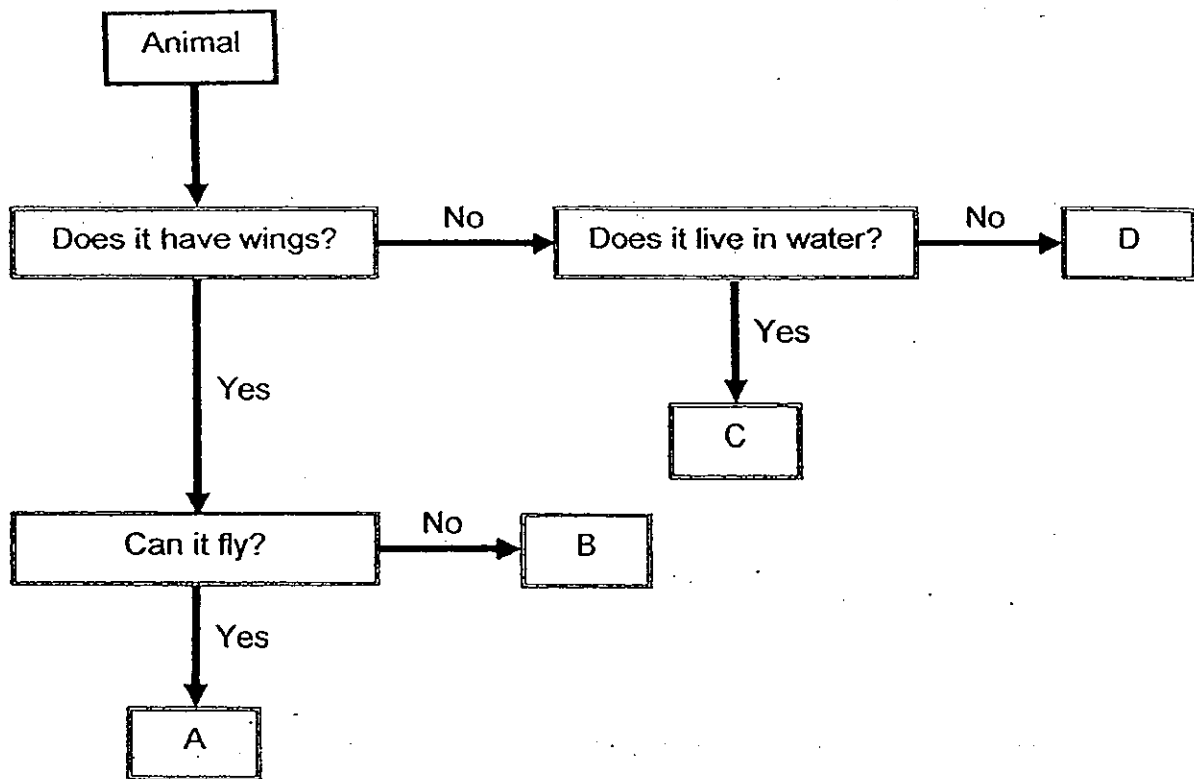


Fill in the blanks below with correct words based on the diagram above. (2m)


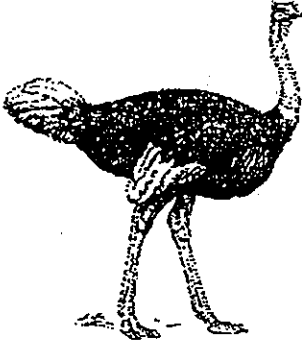
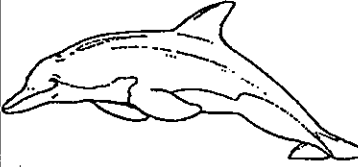
a) The fishes died after some time as they did not get enough _____.

b) The fishes also need _____ to survive.

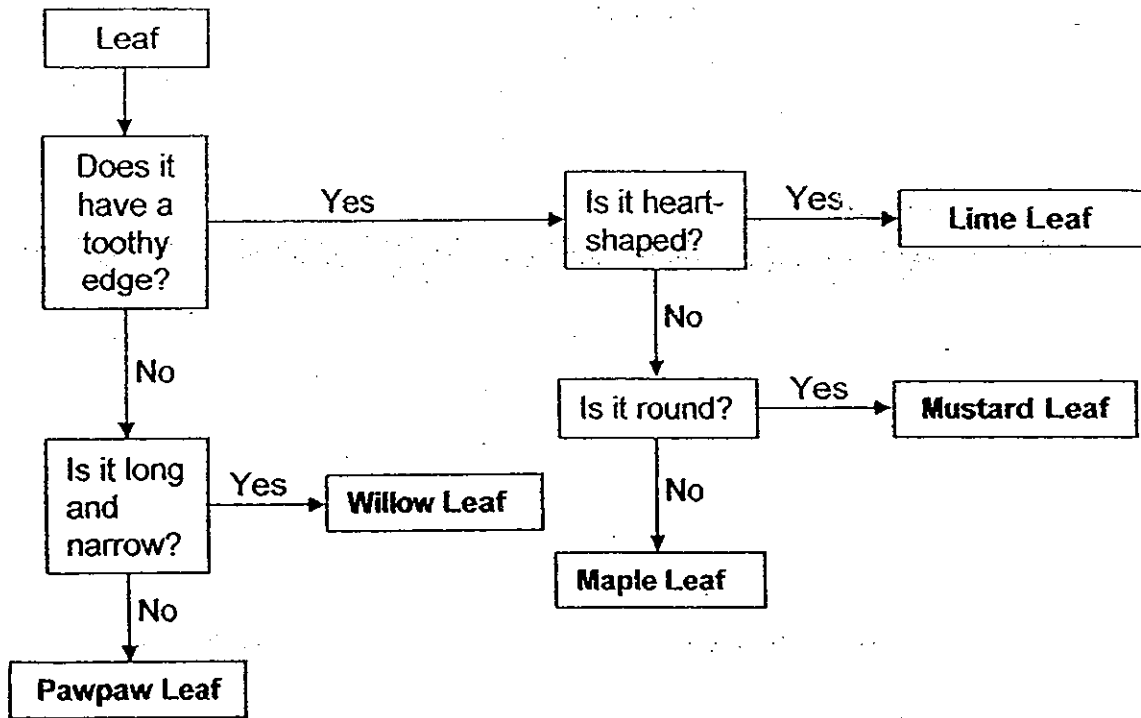
24. The diagram below shows a flow chart which can be used to classify animals.



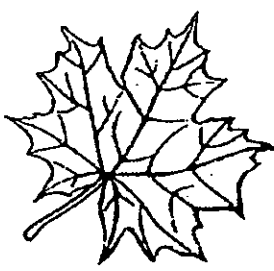
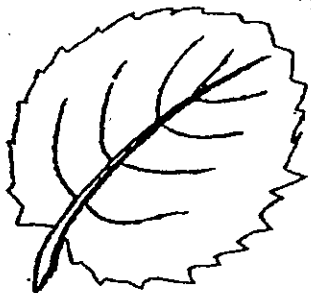
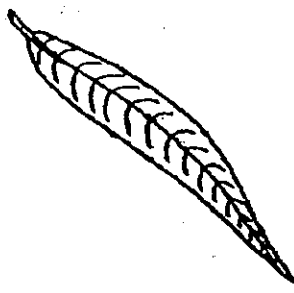
Based on the flow chart above, write the letters, A, B, C or D, that represents the following 3 animals in the correct boxes below. (3m)

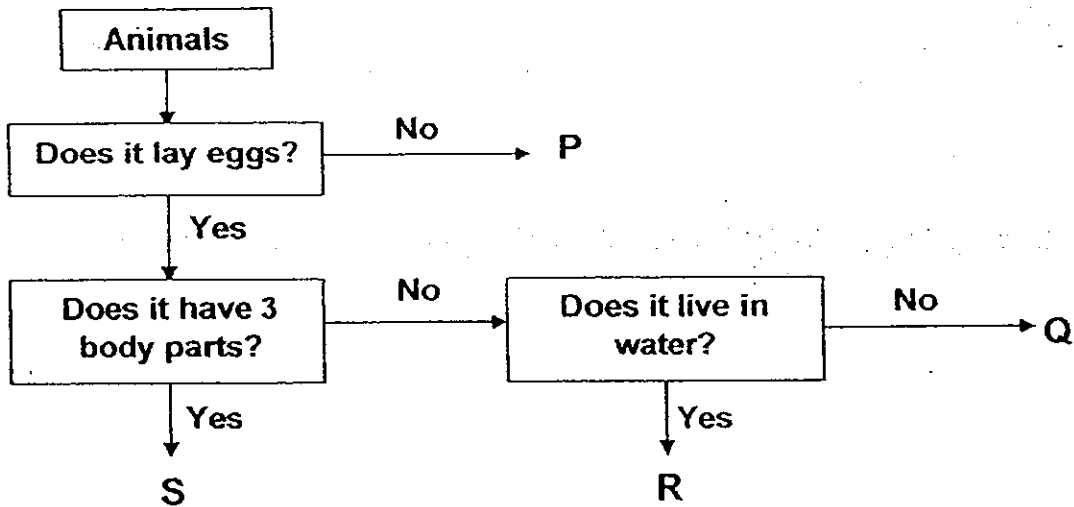
25. The flow chart below shows the characteristics of 5 different kinds of leaves.



Use the flow chart to identify and write the names of the following 3 leaves A, B and C. (3m)

Leaf A	Leaf B	Leaf C
		

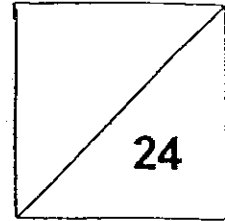
26. Study the flow chart of animals P, Q, R and S below carefully.



Based on the flowchart, complete the following statements by writing the correct letters P, Q, R or S in the blanks provided. (3m)

- Animal Q lays eggs but animal _____ does not lay eggs.
- Animal S has 3 body parts but animals R and _____ do not have 3 body parts.
- Animal _____ lives in the water but animal Q does not live in the water.

HENRY PARK PRIMARY SCHOOL
2013 SEMESTRAL EXAMINATION I
SCIENCE
PRIMARY 3



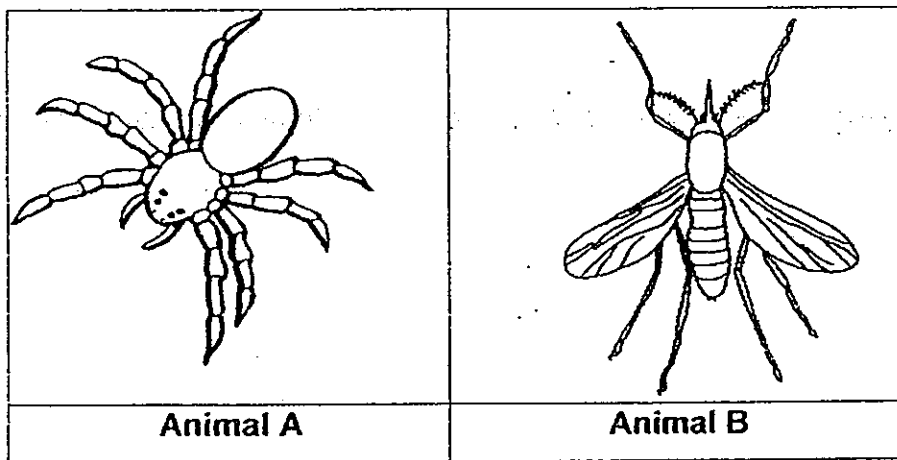
Name: _____ ()

Class: Pr 3 _____

Section C

Write your answers to questions 27 to 34 in the spaces given. (24 marks)

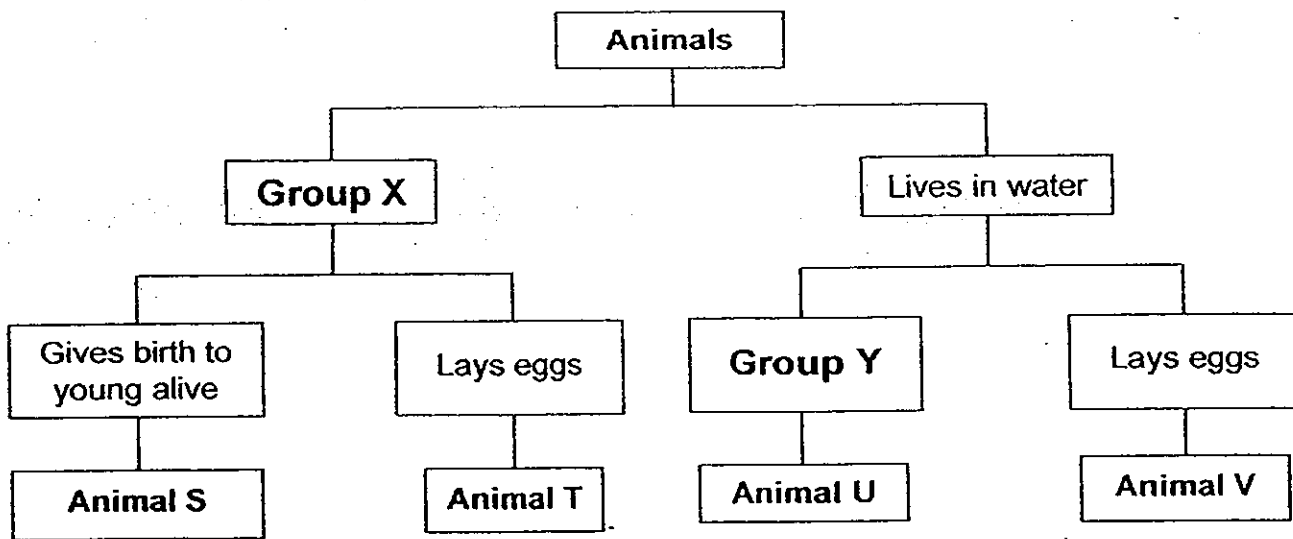
27. Sean found animals A and B in his school garden. He then sketched pictures of them as shown in the diagram below.



a) Which animal, A or B, is likely to be an insect? (1m)

b) Explain your answer in (a). (2m)

28. The classification chart below shows how some animals are grouped according to their characteristics.



a) Based only on the classification chart above, state one similarity and one difference between animals T and V. (2m)

Similarity:

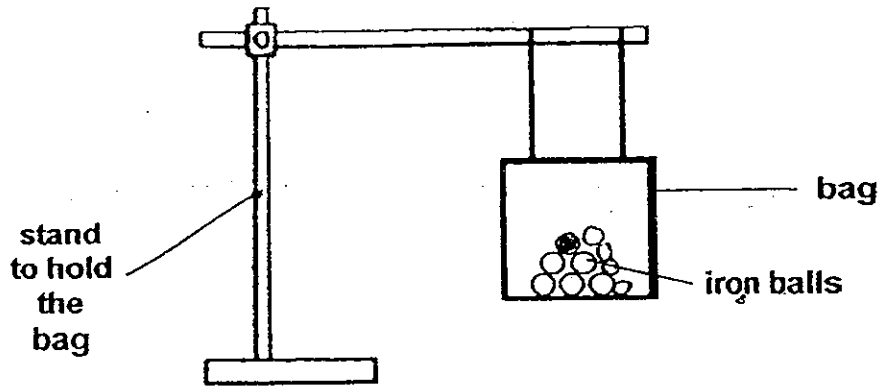
Difference:

b) Give a suitable heading for Groups X and Y. (2m)

Group X:

Group Y:

29. Mdm Lim set up the experiment shown below. She added similar iron balls into Bag A until the bag broke.



She repeated the experiment using Bag B and Bag C which were made of different materials. She recorded her observation in the table below.

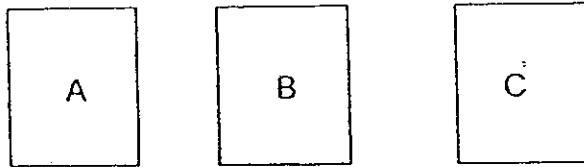
	Number of iron balls added before the bag broke
Bag A	25
Bag B	13
Bag C	19

- a) Which bag, A, B or C is the strongest? (1m)

- b) Using the information from the table, explain your answer in (a). (1m)

- c) Which bag, B or C, is strong enough to hold 16 iron balls? (1m)

30. Tom wants to find out which material, A, B or C is the hardest. He used 3 similar sheets, made of different materials, A, B and C as shown below.



He used the same amount of strength to scratch each sheet 8 times with an iron nail and recorded the results in the table below.

Material	Number of scratches on the material
A	2
B	6
C	3

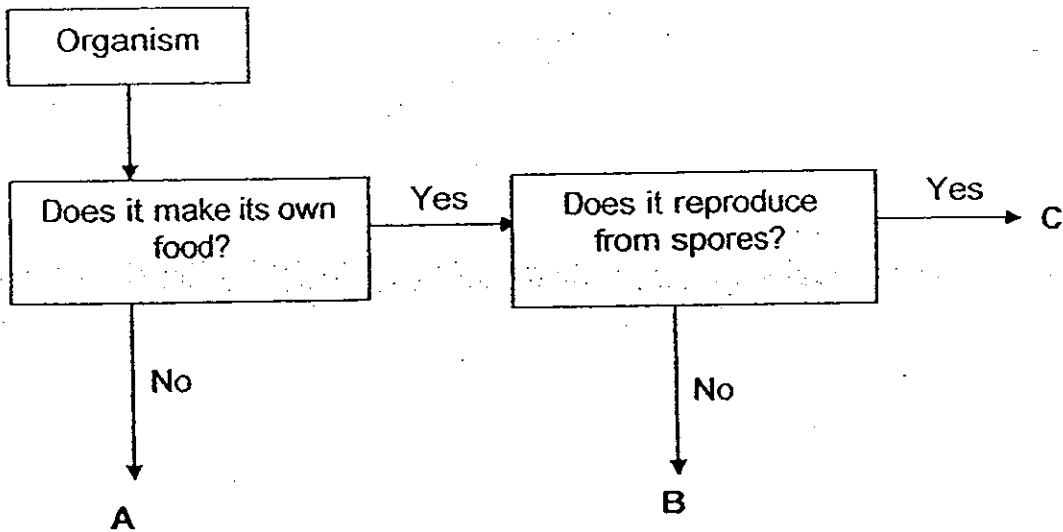
Use the results given in the table above to answer the following questions.

- a) Which material, A, B or C, is the hardest? Explain your answer. (2m)

- b) Tom scratched another similar sheet made of material D, with the iron nail 8 times. He observed 4 scratch marks on material D.

Which materials from table above are harder than Material D? (1m)

31. Study the flow chart which represents organisms A, B and C.



Use the information from the flow chart above to answer the following questions.

a) Describe 2 characteristics of organism C. (2m)

i)

ii)

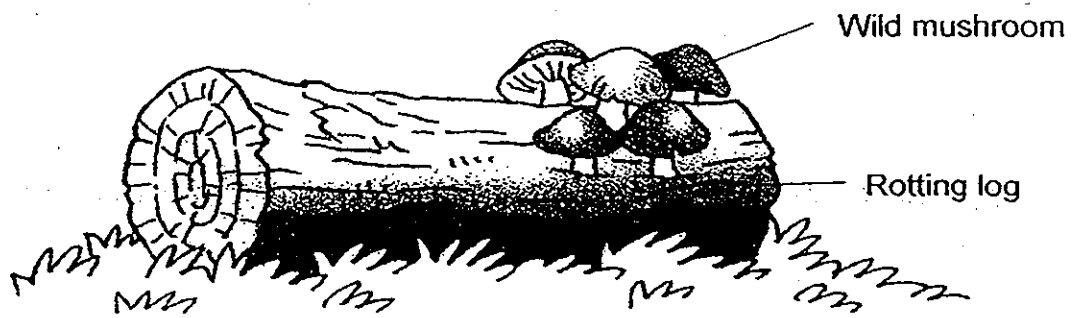
b) Describe one difference between organisms B and C. (1m)

c) Which organism, A, B or C, is not a plant?

Explain why.

(1m)

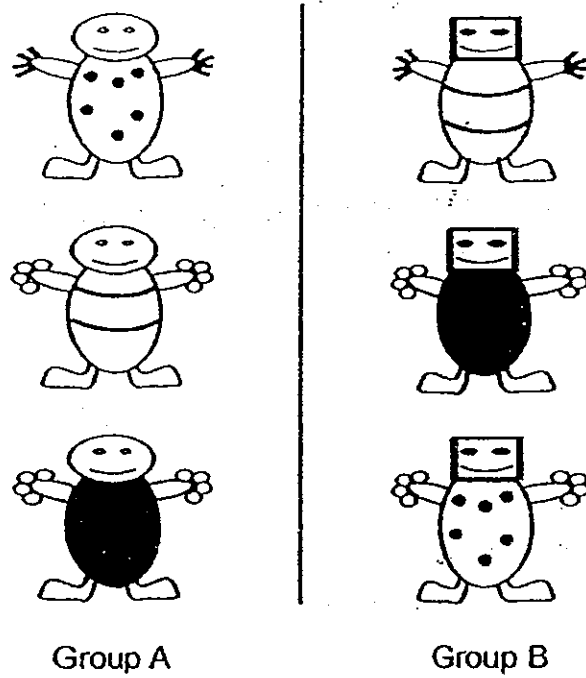
32. Sally was taking a stroll at a park when she spotted a rotting log on the ground.



She noticed that there were wild mushrooms growing on the rotting log.

Explain clearly why wild mushrooms are usually found growing on rotting logs. (2m)

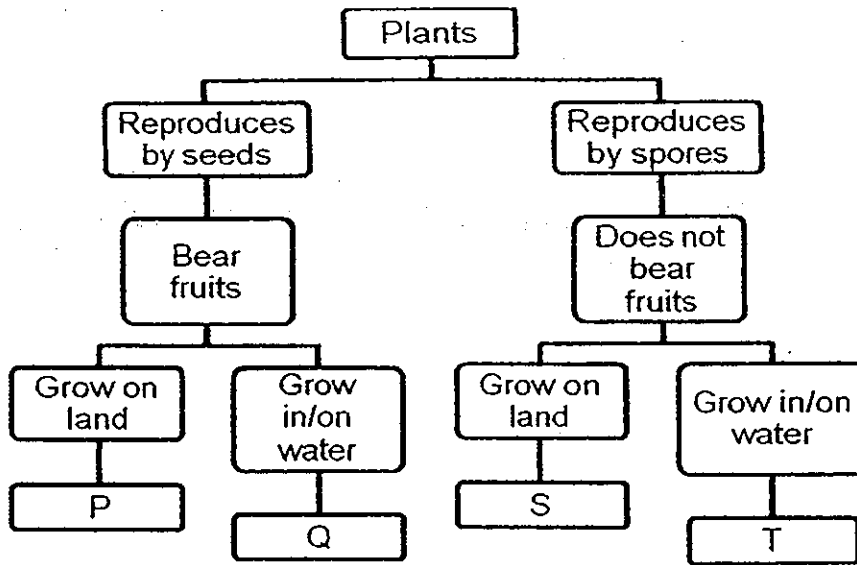
33. The diagram below shows some unknown organisms are classified in groups.



a) State 2 differences between organisms in Group A and Group B. (2m)

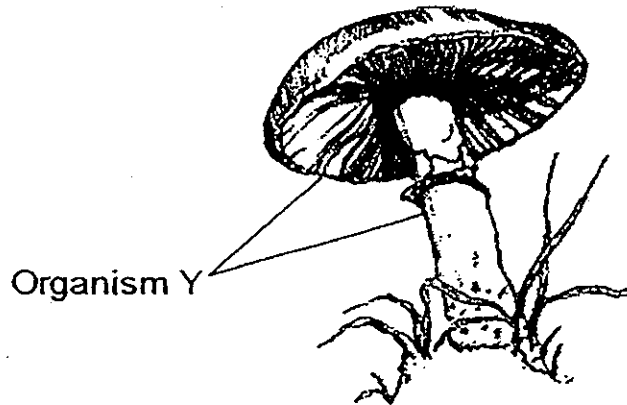
b) State another way these 6 organisms can be classified into 2 groups again. (1m)

34. The classification chart below shows plants P, Q, S and T.



a) State 2 plants, P, Q, S and T, which bear flowers.

(1m)



b) Look at organism Y shown above.

(1m)

Explain why organism Y cannot be placed in the classification chart above.

End of Booklet B

Setters: Mr Yuan KK and Miss Soh LH

ANSWER SHEET

EXAM PAPER 2013

SCHOOL : HENRY PARK PRIMARY SCHOOL

SUBJECT : PRIMARY 3 SCIENCE

TERM : SA1

Q1	Q2	Q3	Q4	Q5	Q6	Q7	Q8	Q9	Q10	Q11	Q12	Q13	Q14	Q15	Q16	Q17
4	4	3	4	4	2	1	3	4	2	2	3	4	2	3	3	4

Q18	Q19	Q20
1	1	3

Section B

Q21) 1. F

2. T

3. F

Q22

a) B, C

b) A, D

Q23

a) Air

b) Food

Q24) D, B, C

Q25) Leaf A:- Maple-leaf

Leaf B: Lime leaf

Leaf C: Willow leaf

Q26

- a) P
- b) Q
- c) R

Q27

- a) Animal B is likely to be an insect
- b) It has three body parts and has six legs

Q28

- a) Similarity: Animal T and V lay eggs
Difference: Animal V lives in water while Animal T does not live in water
- b) Group X: Lives on Land
Group Y: Gives birth to live young

Q29

- a) Bag A is the strongest bag
- b) Bag A has the most number of iron balls before the bag broke
- c) Bag C is strong enough to hold 16 iron balls

Q30

- a) Material A. It has the least number of scratches
- b) Material C and A are stronger than Material D.

Q31

- a) i) It makes its own food
ii) it reproduces through spores
- b) Organism B does not reproduce from spores while organism C does c) Organism A. It cannot make its own food

Q32) The log provides food for the wild mushrooms.

Q33

- a) Organisms in Group A have unshaded eyes while Group B have shaded eyes.
Group A have round heads while organisms in Group B have square heads.
- b) Organisms with rounded fingers and organisms with rectangle fingers.

Q34

- a) Plant P and Q
- b) Organism Y is not a plant