



Rosyth School
Second Semestral Examination for 2013
SCIENCE
Primary 3

Name: _____

Class: Pr-3 - _____ Register No. _____ Duration: 1 h 30 min

Date: 28 October 2013 Parent's Signature: _____

Booklet A

Instructions to Pupils:

1. Do not open the booklets until you are told to do so.
2. Follow all instructions carefully.
3. This paper consists of 2 booklets, Booklet A and Booklet B.
4. For questions 1 to 24 in Booklet A, shade the correct ovals on the Optical Answer Sheet (OAS) provided using a 2B pencil.

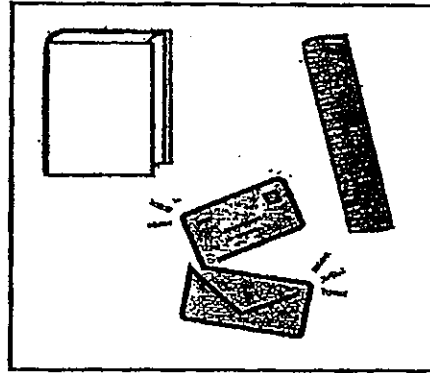
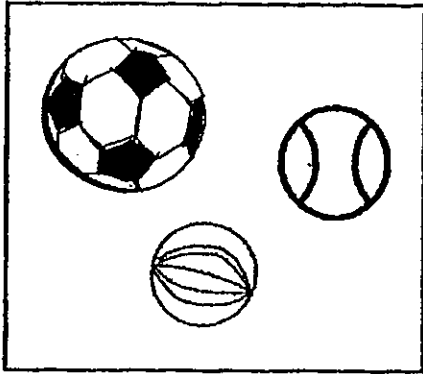
* This booklet consists of 12 pages.

This paper is not to be reproduced in part or whole without the permission of the Principal.

Part I (48 MARKS)

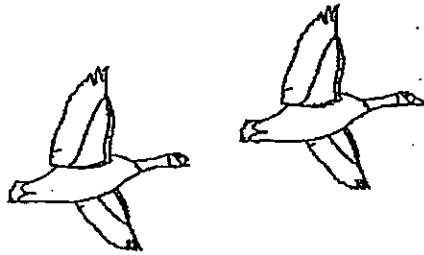
For each question from 1 to 24, four options are given. One of them is the correct answer. Make your choice (1, 2, 3 or 4) and shade the correct oval (1, 2, 3 or 4) on the Optical Answer Sheet (OAS).

1. John has grouped the things he found in his room into two groups as shown below.



How has John classified the things in his room?

- (1) According to their sizes
 - (2) According to their colours
 - (3) According to their shapes
 - (4) According to their patterns
2. Study the pictures below carefully.



What characteristic of living things does the above picture show?

- (1) Living things grow.
- (2) Living things need air.
- (3) Living things reproduce.
- (4) Living things can move by themselves.

3. Study the two animals below carefully.



Animal A



Animal B

How are they different?

A: Both animals have different types of outer coverings.

B: Both animals have different length of the legs.

C: Both animals have different length of the beaks.

(1) A and B only

(2) A and C only

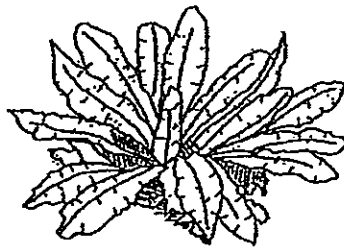
(3) B and C only

(4) A, B and C

4. Look at the pictures below.



mushroom



fern

Which of the following is true for both living things above?

(1) Both are plants.

(2) Both have leaves.

(3) Both reproduce by spores.

(4) Both can make their own food.

5. Mr Suresh had three plants (A, B and C) in his garden. He observed the plants and stated their characteristics as shown in the table below.

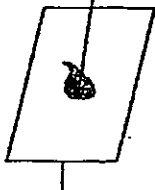
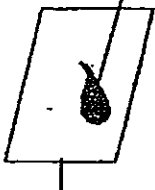


Characteristics	Plants		
	A	B	C
▪ Grow on land	Yes	Yes	Yes
▪ Has fruits	No	Yes	Yes
▪ Has more than one seed in the fruit	No	No	Yes

Which one of the following statements about the plants (A, B and C) is true?

- (1) A does not bear flowers.
- (2) B and C are water plants.
- (3) A and C do not produce fruits.
- (4) B and C reproduce by spores.

6. Sarah wanted to find out if the amount of water will affect the growth of bread mould.

She added different amount of water to 4 pieces of bread. She also recorded her observation in the table below after 5 days.

Set-up	A	B	C	D
Amount of water added(ml)	2	4	6	8
Light	Present	Present	Present	Present
Appearance of bread after five days	<p>mould</p>  <p>bread</p>	<p>mould</p>  <p>bread</p>	<p>mould</p>  <p>bread</p>	<p>mould</p>  <p>bread</p>

What can Sarah conclude from her experiment?

- (1) Light is needed for the mould to grow.
- (2) Light is not needed for the mould to grow.
- (3) Different amount of water affected the size of the mould.
- (4) Different amount of water did not affect the size of the mould.

7. Amy, Betty and Charlie each made a statement about what they had learnt about systems.

Amy : Systems are found in both living and non-living things.

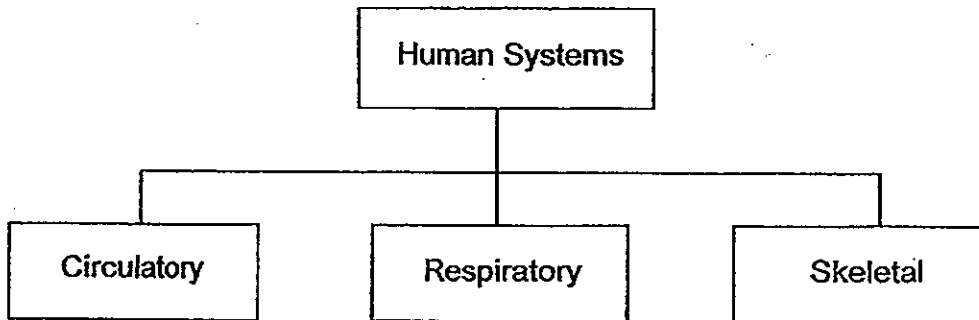
Betty : A system will not function properly if one or more parts are missing.

Charlie : A system is made up of parts which work together to perform a function.

Whose statements are correct?

- (1) Amy and Betty only
- (2) Amy and Charlie only
- (3) Betty and Charlie only
- (4) Amy, Betty and Charlie

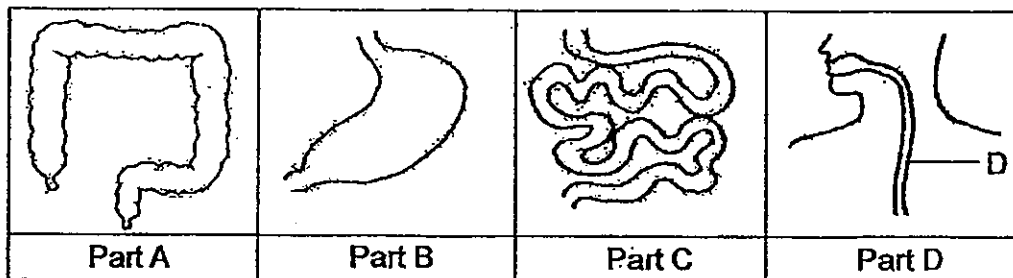
8. Below is a classification chart of human systems.



Which of the following parts are correctly matched to the systems?

	Circulatory	Respiratory	Skeletal
(1)	lungs	nose	ribs
(2)	blood	heart	skull
(3)	heart	lungs	ribcage
(4)	blood vessels	gullet	backbone

9. The diagrams below show the different parts of the human digestive system.

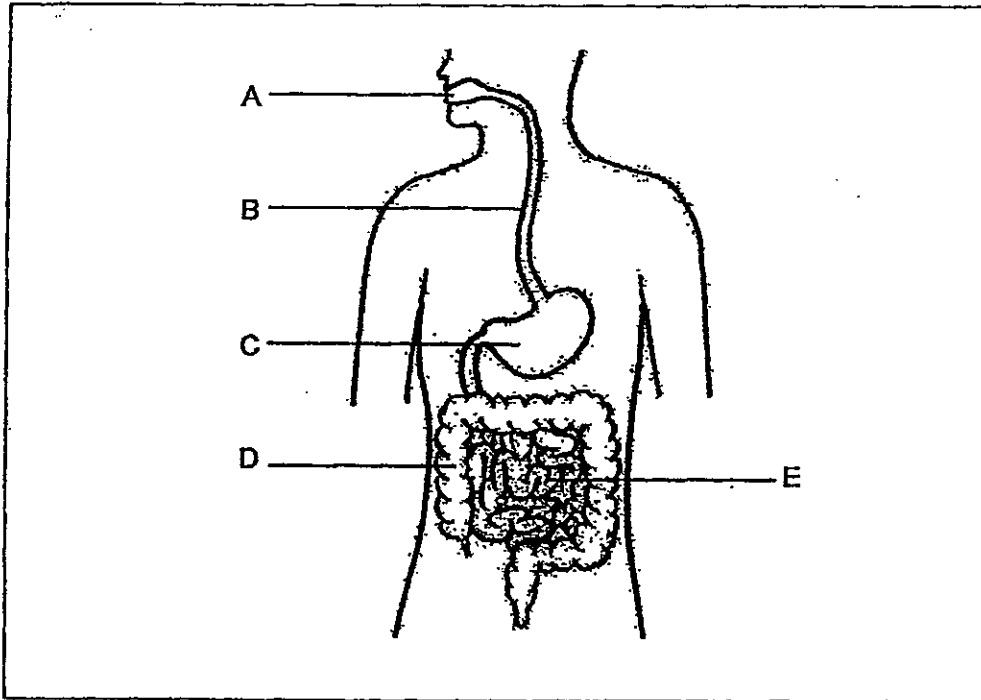


Which of the following statements about the parts above are correct?

- W : Digestion begins in Part B.
- X : Part A produces digestive juices.
- Y : Food is completely digested in Part C.
- Z : Part D does not produce digestive juices.

- (1) W and X only
- (2) W and Y only
- (3) X and Y only
- (4) Y and Z only

Refer to the diagram below (human body's digestive system) and answer Questions 10 and 11.



10. Which parts of the above diagram (A, B, C, D or E) produce digestive juices?

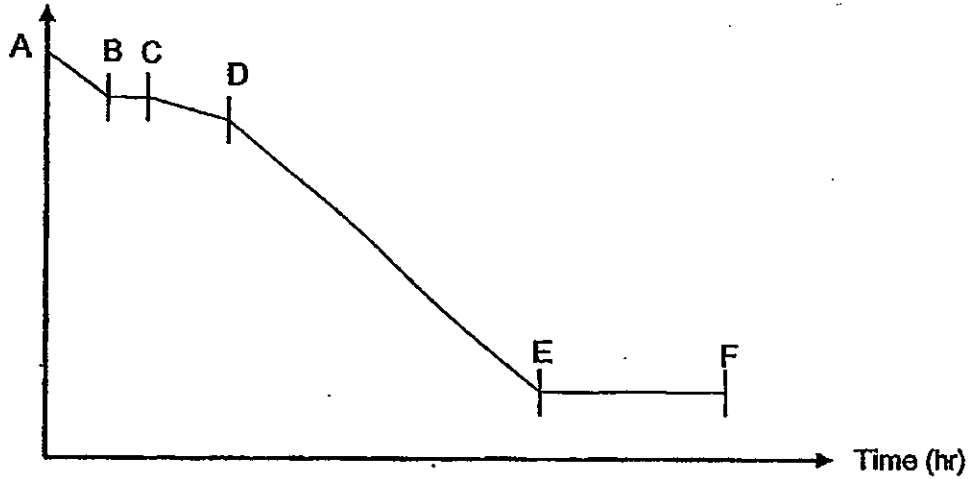
- (1) A, B and C only (2) A, C and E only
 (3) B, C and E only (4) B, D and E only

11. Which of the following correctly shows what happens at D and E?

	D		E	
	Digested food is absorbed	Most of the water is absorbed	Digested food is absorbed	Most of the water is absorbed
(1)	No	Yes	No	Yes
(2)	No	Yes	Yes	No
(3)	Yes	No	No	Yes
(4)	Yes	No	Yes	No

12. The graph below shows the amount of undigested food left in the various organs as it travelled through the digestive system.

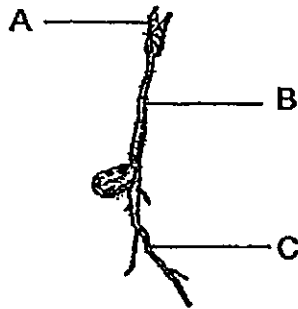
Amount of undigested food



Which parts of the graph represent the gullet and large intestine?

	Gullet	Large intestine
(1)	AB	BC
(2)	AB	EF
(3)	CD	DE
(4)	BC	EF

13. The diagram below shows the seedling of a bean.



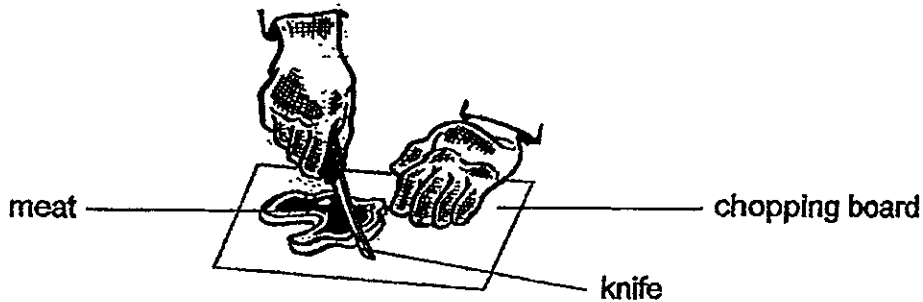
Which of the following correctly represents the parts marked A, B and C?

	A	B	C
(1)	stem	root	leaves
(2)	stem	leaves	root
(3)	leaves	stem	root
(4)	leaves	root	stem

19. Which one of the following is a magnetic material?

- (1) Iron
- (2) Gold
- (3) Copper
- (4) Aluminium

20. Mr Lim used a knife to cut a piece of meat on a chopping board. After cutting the meat, he noticed that there were a few scratches on the chopping board.

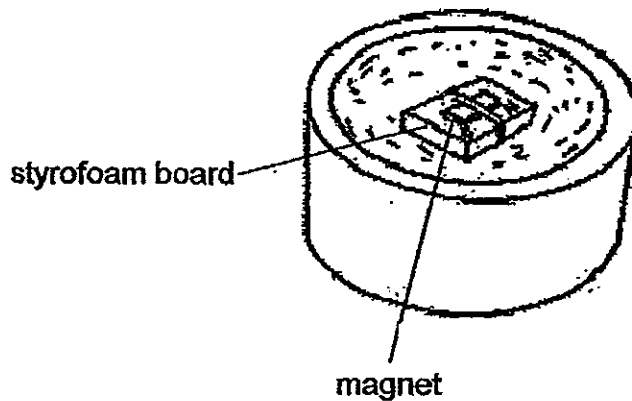


Which one of the following best explains Mr Lim's observation?

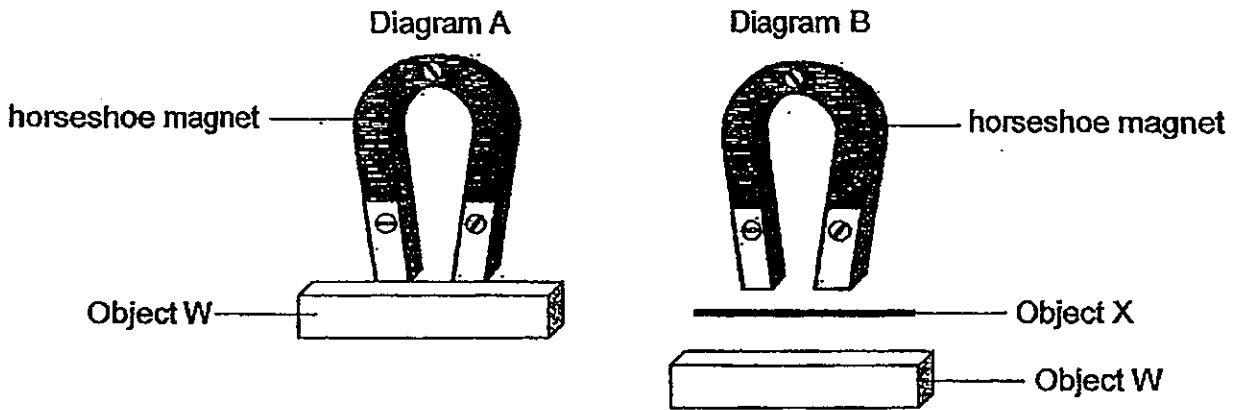
- (1) The knife is harder than the chopping board.
- (2) The chopping board is harder than the knife.
- (3) The knife is stronger than the chopping board.
- (4) The chopping board is stronger than the knife.

21. Jeya taped a bar magnet onto a piece of styrofoam board and let it float in a tank filled with water. In which direction will the bar magnet point to when it comes to rest?

- (1) East-West
- (2) South-East
- (3) North-West
- (4) North-South



22. When Ahmad put Object W near a horseshoe magnet, Object W was pulled towards it as shown in Diagram A. Then he placed a thin sheet of Object X between Object W and the magnet. Object W dropped instantly as shown in Diagram B.

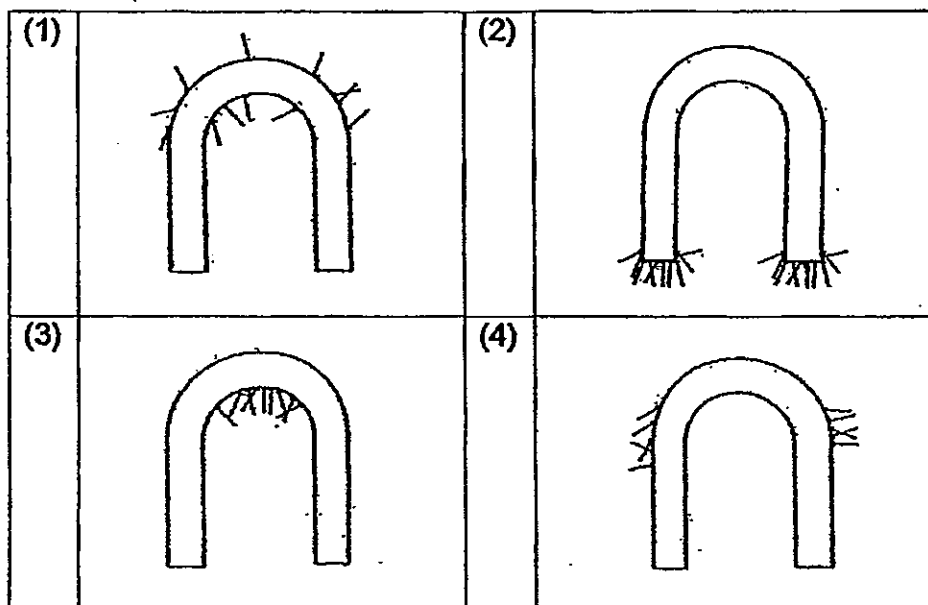


What could Object W and Object X be made of?

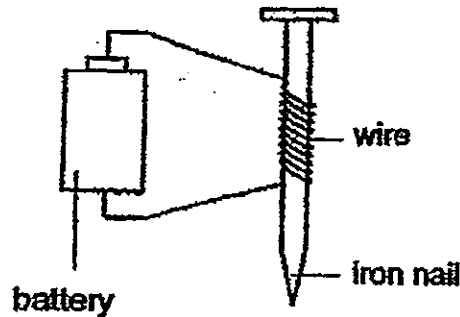
	Object W	Object X
(1)	steel	iron
(2)	iron	aluminium
(3)	aluminium	steel
(4)	silver	paper

23. A U-shaped magnet is lowered completely into a box of pins.

Which one of the following diagrams shows what it looks like when it is lifted from the box of pins?



24. Josh made a temporary magnet using the electrical method as shown below.



He changed the number of turns of the wire around the iron nail and counted the number of paper clips attracted by the nail. The results were shown in the table below.

	Set-up A	Set-up B	Set-up C	Set-up D
Number of turns of the wire	5	10	15	20
Number of paper clips being attracted by the iron nail	2	5	10	14

Based on the results, which of the statements are true?

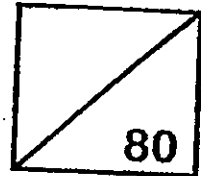
- A: The iron nail in Set-up D has the strongest magnetism.
- B: The strength of the magnet depends on the number of batteries.
- C: The strength of the magnet depends on the number of turns of the wire.
- D: The iron nail in Set-up A is a weaker magnet than the iron nail in Set-up C.

- (1) A and D only
- (2) A and B only
- (3) A, B and C only
- (4) A, C and D only

End of Part 1



Rosyth School
Semestral Examination for 2013
SCIENCE
Primary 3



Name: _____

Total
Marks:

Class: Pr 3 - _____ Register No. _____ Duration: 1 h 30 min

Date: 28 October 2013

Parent's Signature: _____

Booklet B

Instructions to Pupils:

1. For questions 25 to 34, write your answers in the spaces given in this booklet.

	Maximum	Marks Obtained
Booklet A	48 marks	
Booklet B	32 marks	
Total	80 marks	

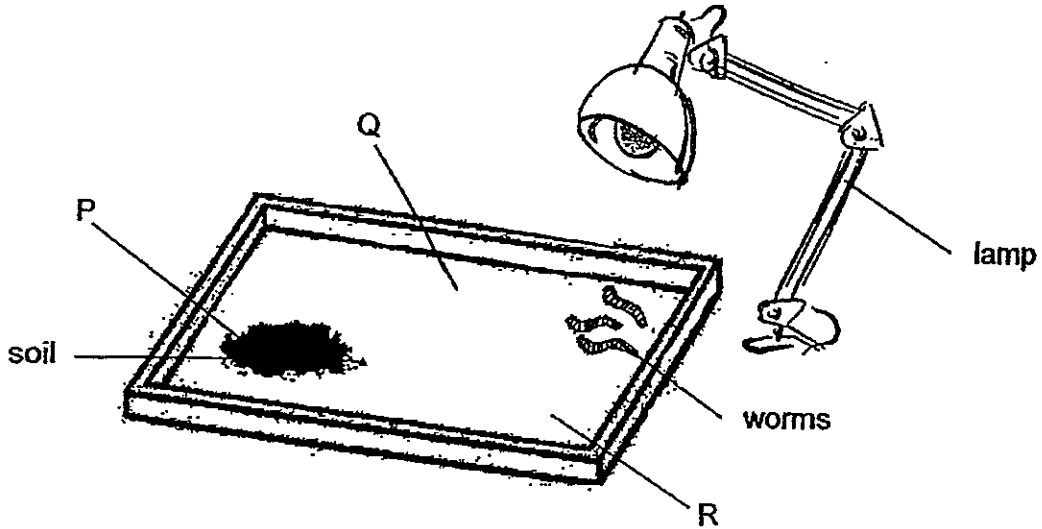
* This booklet consists of 10 pages.

This paper is not to be reproduced in part or whole without the permission of the Principal.

Part II (32 MARKS)

For questions 25 to 34, write your answers in this booklet.

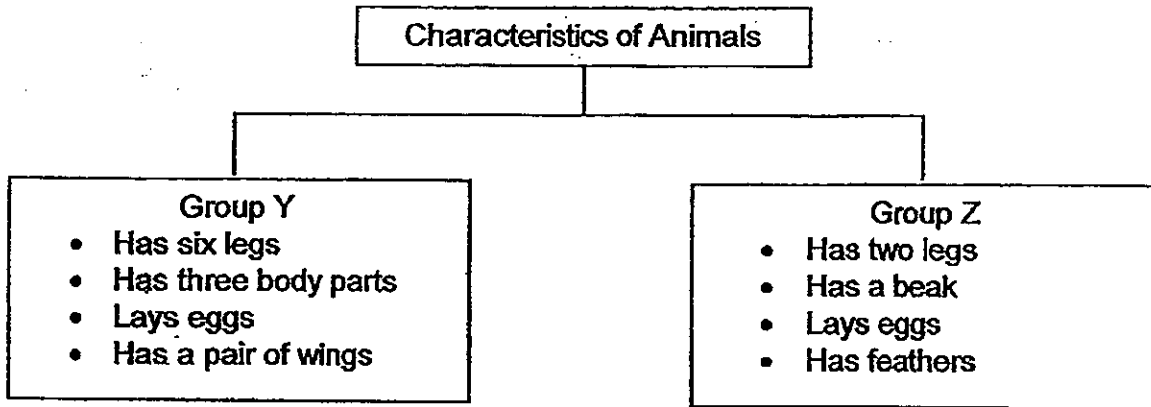
25. Tina took some worms from the composting bin and placed them in a set-up as shown below. She then switched on the lamp and observed the worms.



- (a) The worms moved to a position in the set-up which they prefer most. Which position (P, Q or R) would they move to? [1]

- (b) What are the two characteristics of living things shown by the worms in the above experiment? [2]

26. Study the classification chart below.

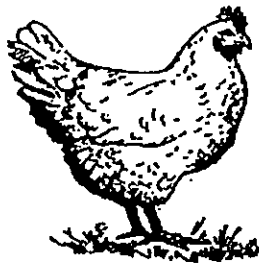


(a) Give suitable headings for Group Y and Group Z. [2]

Group Y: _____

Group Z: _____

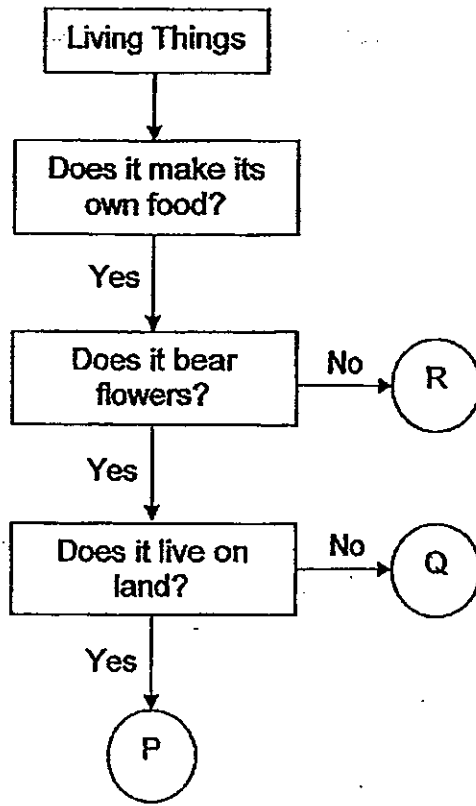
(b) The animal below shows Animal W.



Kok Leng said Animal W should be placed in Group Z.
Do you agree with him? Give a reason for your answer.

[1]

27. The flowchart below shows how living things are classified.

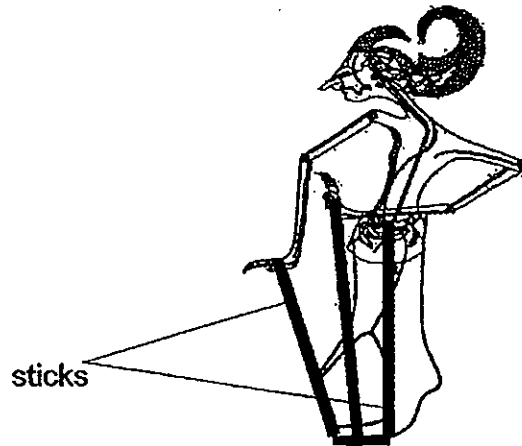


(a) State all the characteristics of living thing, Q. [1]

(b) State a difference between living things, P and R. [1]

(c) Do you think P, Q and R are animals or plants? Support your choice. [1]

28. The diagram below shows a shadow puppet which is supported and controlled by sticks attached to its body, legs and feet.



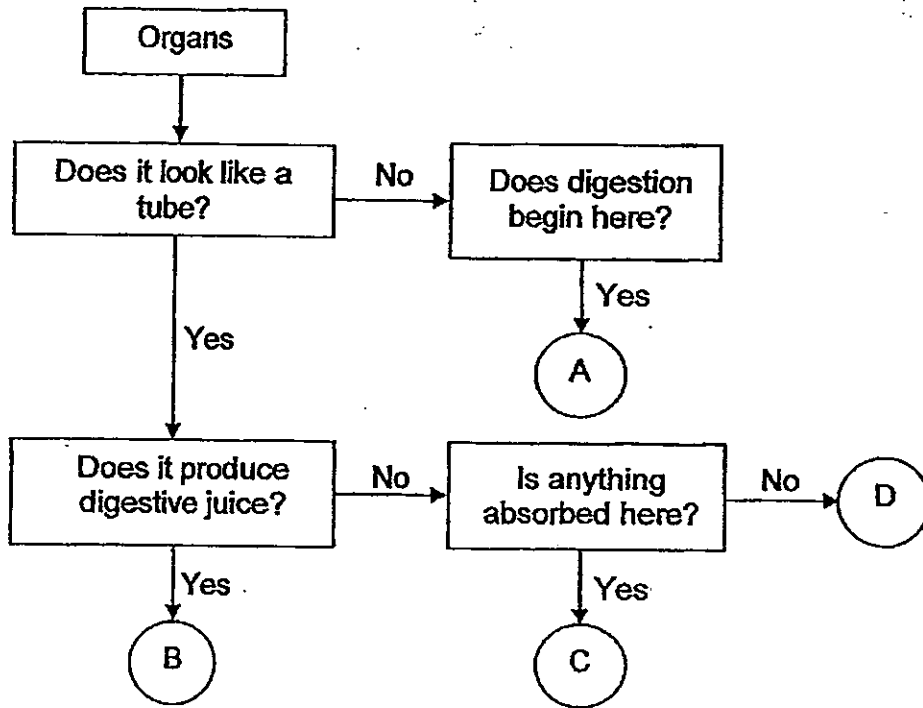
The shadow puppet can be moved by adjusting the sticks attached to it.

Which two human body systems work the same way as the shadow puppet to enable it to move? [2]

(i) _____

(ii) _____

29. Peter drew the flowchart below to show the characteristics of the organs found in human digestive system.



Based on the flowchart, what are likely to be the organs represented by parts A, B, C and D?

[4]

Parts	Organs
A	
B	
C	
D	

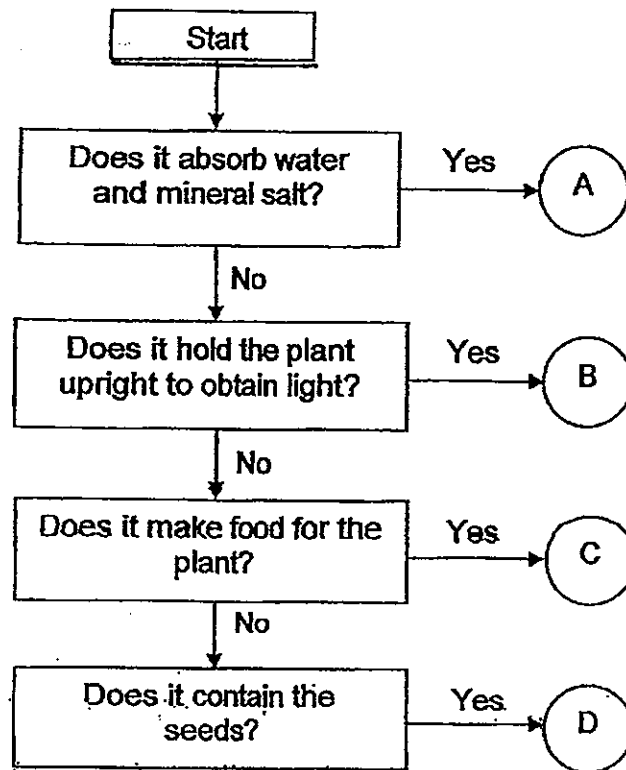
30. The table below shows the problems two pupils experienced.

- (a) Identify the organs in the digestive system directly linked with the problems they had in the table below. [2]

	Problem	Organ that might not be working well
(i)	Ahmad had to go to the bathroom many times and his waste was very watery.	 <hr/>
(ii)	Susan vomited after lunch and felt some pain at the area slightly below the lungs. Her vomit was lumpy.	 <hr/>

- (b) Explain why Ahmad's waste was very watery in (i). [1]

31. The flowchart below describes the functions of some parts of a plant.



Which part of the plant is represented by A, B, C and D?

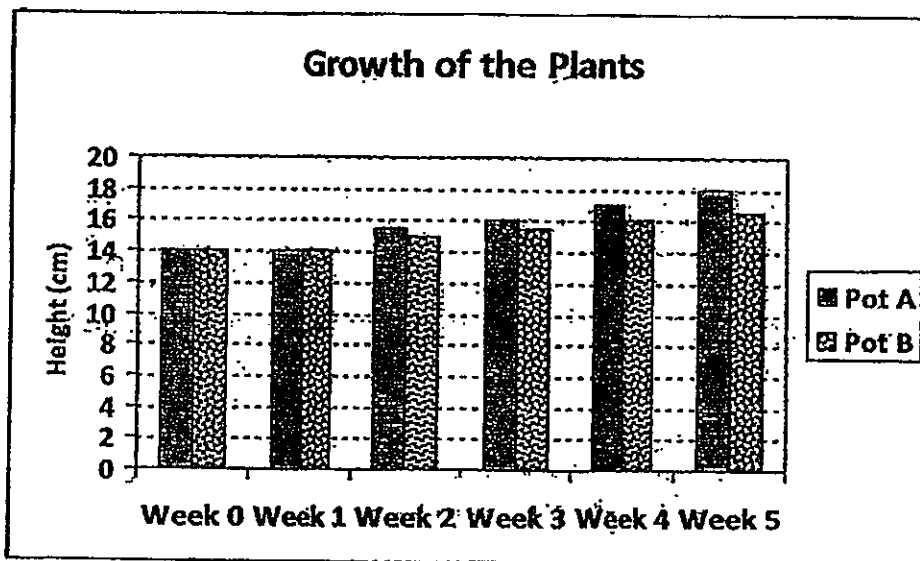
[4]

Parts	Plant Parts
A	
B	
C	
D	

32. Lily carried out an experiment on two identical potted plants. The height of both plants was 14cm. She labelled them as Pot A and Pot B as shown below.



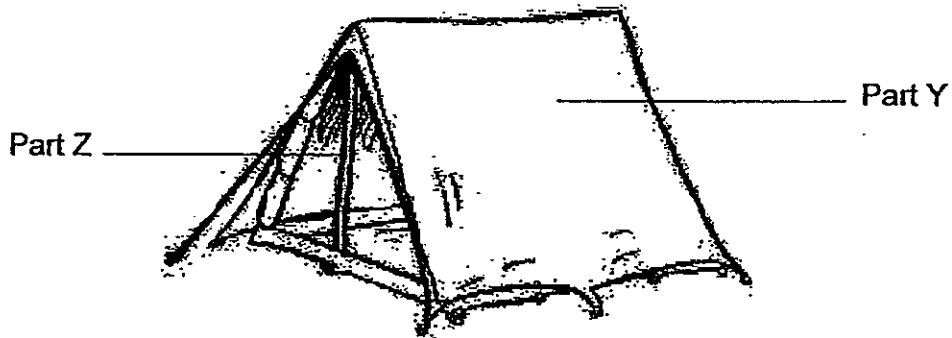
Then, she poured 100 ml of tap water mixed with worm tea in Pot A and 100 ml of tap water only in Pot B for five weeks. The graph below shows the height of the plants over the five weeks.



- (a) Based on the graph, what did Lily observe about the height of the plants from Week 0 to Week 5? [2]

- (b) Lily said that worm tea is useful for the growth of the plants. Do you agree with her? Explain your choice. [1]

33. Sam wants to find suitable materials for making Part Y and Z of the outdoor camping tent as shown below.

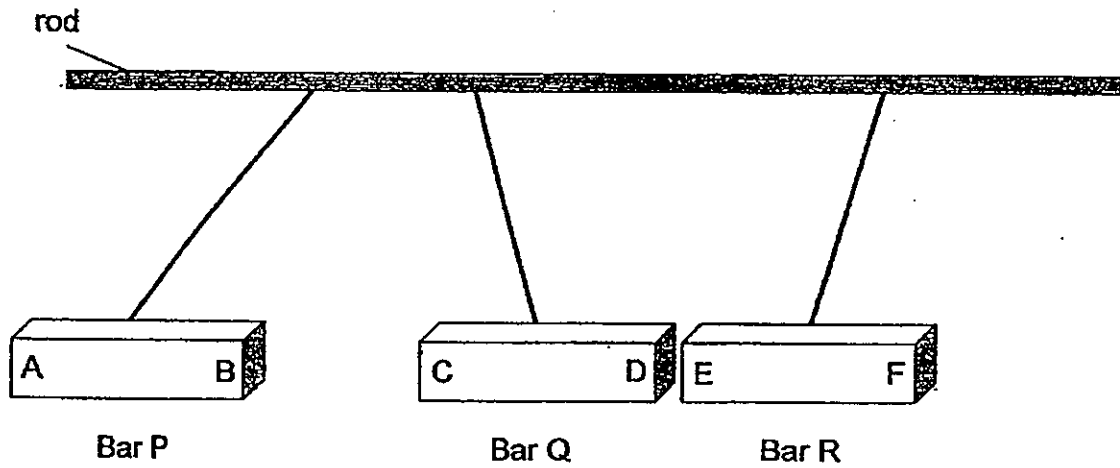


- (a) State what material should Part Y made of. [1]

- (b) State one property of material chosen in (a) which makes it suitable for Part Y. [1]

- (c) Sam said that metal can be used to make Part Z. Do you agree with him? Give a reason to support your answer. [1]

34. There were 3 similar metal bars, P, Q and R hung on a rod using strings. The diagram below shows what happened to the bars.



- (a) Which bars (P, Q, or P) are most likely to be magnets? [1]

- (b) Suggest a material that Bar R could be made of. [1]

- (c) What will happen if Bar P is turned the other way such that pole A is facing pole C? Explain why. [2]

End of Paper

ANSWER SHEET

EXAM PAPER 2013

SCHOOL : ROSYTH PRIMARY SCHOOL

SUBJECT : PRIMARY 3 SCIENCE

TERM : SA2

Q1	Q2	Q3	Q4	Q5	Q6	Q7	Q8	Q9	Q10	Q11	Q12	Q13	Q14	Q15	Q16	Q17
3	4	3	3	1	3	4	3	4	2	2	4	3	2	3	3	4

Q18	Q19	Q20	Q21	Q22	Q23	Q24
4	1	1	4	1	2	4

Booklet B

Q25

a) Position P

b) The characteristics are move by themselves and respond to changes

Q26

a) Group Y: Insects

Group Z: Birds

b) Yes. The animal W has two legs, a beak, lays eggs and has feathers, just like group Z

Q27

a) Plant Q does not live on land, bears flowers and makes it own food

b) Plant P bears flowers but plant R does not bear flowers

c) Plants. They make their own food.

Q28)

i) Muscular system

ii) Skeletal System

Q29)

Parts	Organs
A	Mouth
B	Small intestine
C	Large intestine
D	Gullet

Q30

- a) i) Large intestine
ii) Stomach
- b) Large intestine did not absorb the excess water in the undigested food

Q31)

Parts	Plant Parts
A	Roots
B	Stem
C	Leaves
D	Fruit

Q32

- a) From Week 0 to 1, the height of the plants did not increase. From week 2 to 5, the height of the plants increased
- b) Yes, the plant in pot A has grown taller than the plant in pot B

Q33

- a) Rubber
- b) It is flexible
- c) Yes. Part Z is strong and able to support the tent so that it will not fall over

Q34

- a) Bar P
- b) Bar R could be made of iron
- c) Bar P will attract Q unlike poles are facing each other.

SINGAPORE CHINESE GIRLS' SCHOOL
FIRST SEMESTRAL ASSESSMENT 2013
PRIMARY 3
SCIENCE

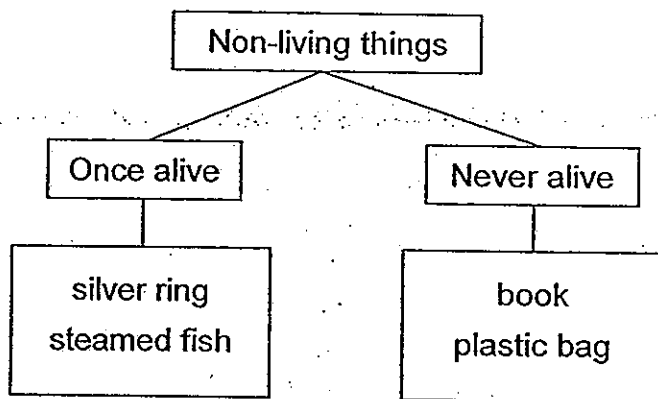
Name: _____ ()
Class: Primary 3

Date: _____
Duration: 1 hour

Part I (15 x 2 marks)

For each question from 1 to 15, four options are given. One of them is the correct answer. Make your choice (1, 2, 3 or 4). Shade the correct oval (1, 2, 3 or 4) on the Optical Answer Sheet.

1. The table below shows how non-living things can be classified. Which of the following has been classified **wrongly**?



- 1) book only
- 2) steamed fish only
- 3) book and silver ring only
- 4) steamed fish and plastic bag only

2. Look at the classification table below.

Living Things	Non-living Things
Ant	Stones
Mouse	Scissors
X	Y

Which one of the following represents X and Y correctly?

	X	Y
1)	Handphone	Plastic ruler
2)	Cow	Leather belt
3)	Dog	Caterpillar
4)	Magnet	Wooden chair

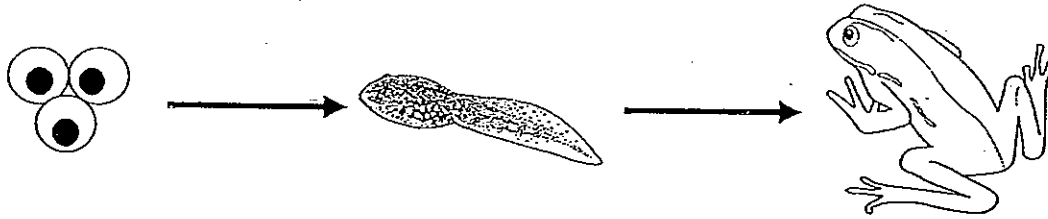
3. The table below shows the number of goldfish in the same fish tank over a period of six months.

Month	Number of Goldfish
January	5
February	5
April	9
June	12

Which characteristic of living things can be observed from the table?

- 1) Living things can grow.
- 2) Living things can reproduce.
- 3) Living things need air, food and water.
- 4) Living things can respond to changes around them.

4. The diagram shows the stages of growth of a frog.



Which one of the following statements best describes the above process?

- 1) Living things can grow.
- 2) Living things can move.
- 3) Living things need food.
- 4) Living things can breathe.

5. Sarah made the following observations about a cockroach.

A: It has wings.

B: It has six legs.

C: It has a pair of feelers.

D: It has three body segments.

Which statements tell her that the cockroach is an insect?

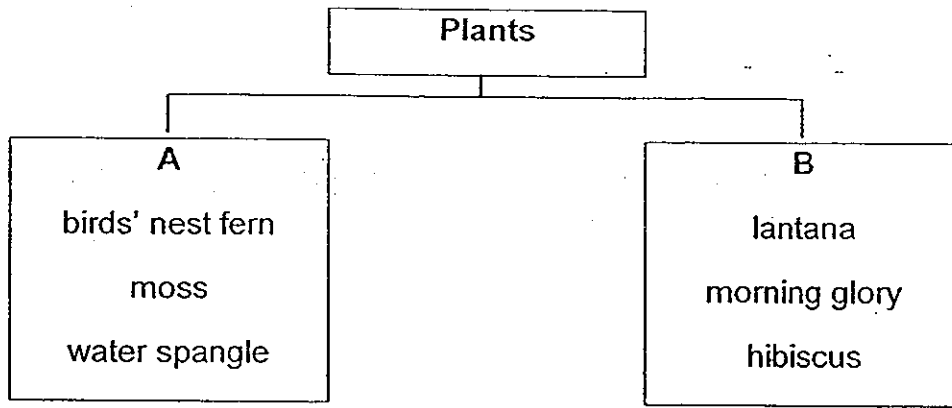
1) A and B only

3) A, B and C only

2) B and C only

4) B, C and D only

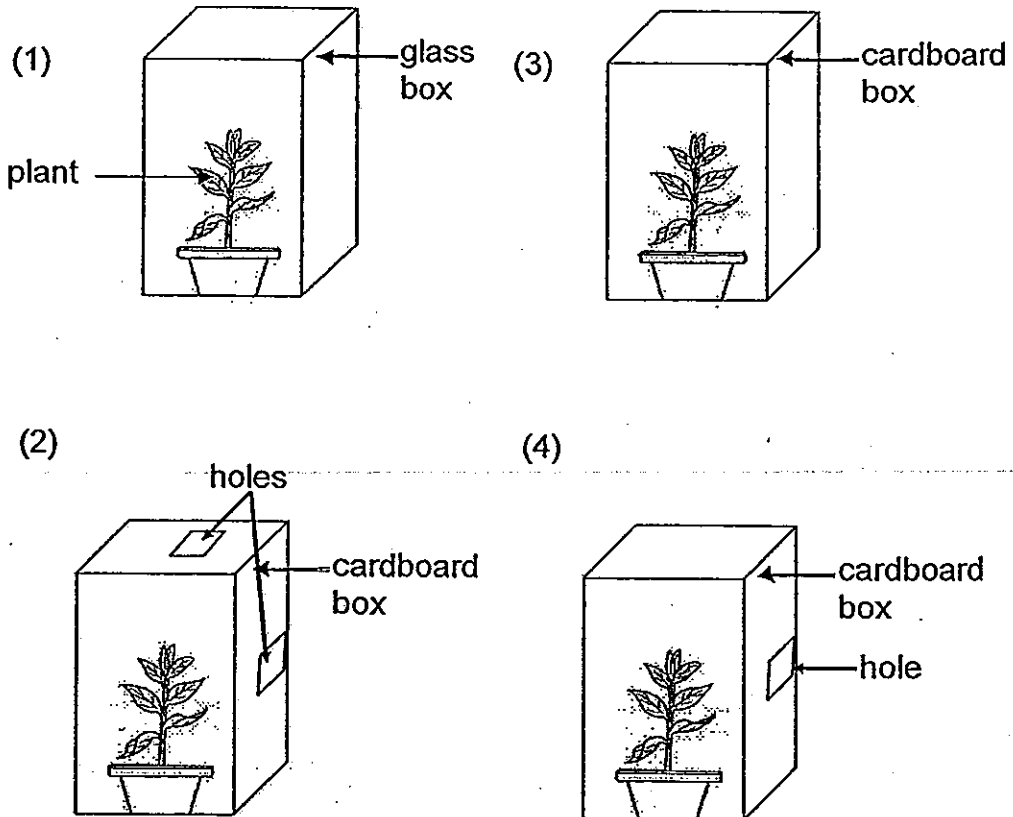
6. Study the classification chart.



Which of the following are suitable headings for A and B?

	A	B
(1)	Grows singly	Grows in cluster
(2)	Non-flowering	Flowering
(3)	Inedible	Edible
(4)	Water plants	Land plants

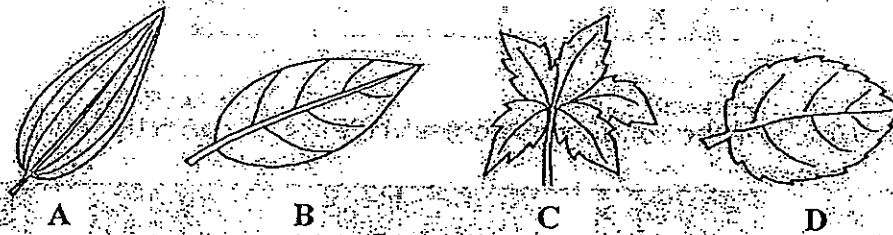
7. Look at the set-ups shown below. Which set-up will be able to illustrate that plants grow towards light?



8. Look at the table below.

Group X	Leaves with toothed edge
Group Y	Leaves with entire edge

Susan was given 4 leaves by her teacher. Which 2 leaves could be placed in Group X?



- (1) A and B
- (2) A and C
- (3) B and C
- (4) C and D

9. The pictures below show a toadstool and some bread mould.



Toadstool



Bread Mould

Which one of the following statements is true for both the toadstool and bread mould?

- (1) They are inedible.
- (2) They reproduce by seeds.
- (3) They are micro-organisms.
- (4) They are bacteria that make us ill.

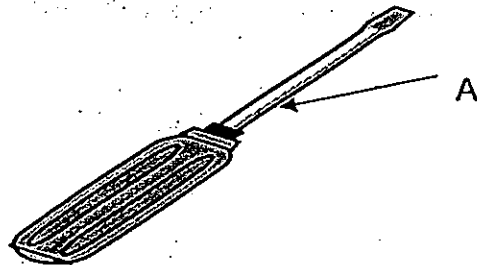
10. Joanne recorded her observations about some containers.

Containers	What is kept in the container?	Can you see through the container?	What is the container made from?
bottle	soft drink	yes	plastic
carton	Milk	no	cardboard
can	Soup	no	metal

Based on the table above, which of the following statements is true?

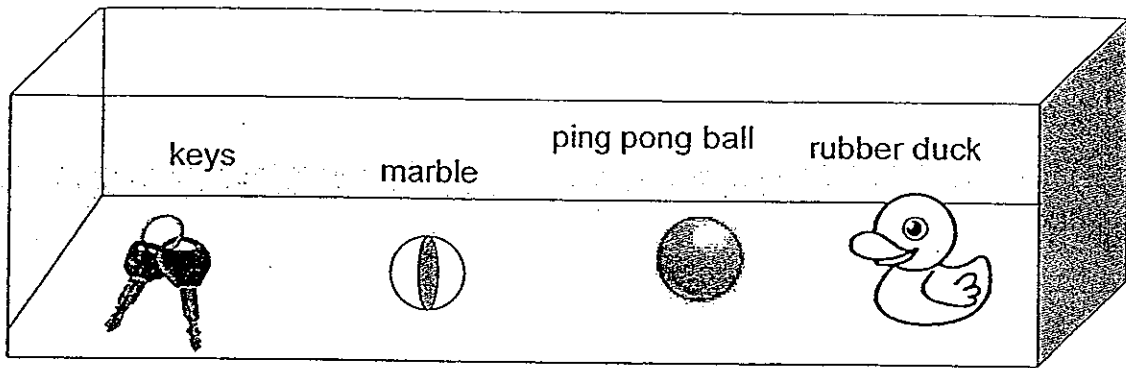
- 1) Soup is kept in plastic bottles.
- 2) Milk is kept in glass bottles.
- 3) You can see through plastic.
- 4) You can see through the carton.

11. The diagram below shows a screw driver. Based on the reasons given below, which of the following is a suitable material for part A?



	Part A	Reason
1)	metal	soft and waterproof
2)	wood	light and flexible
3)	wood	strong and hard
4)	metal	strong and durable

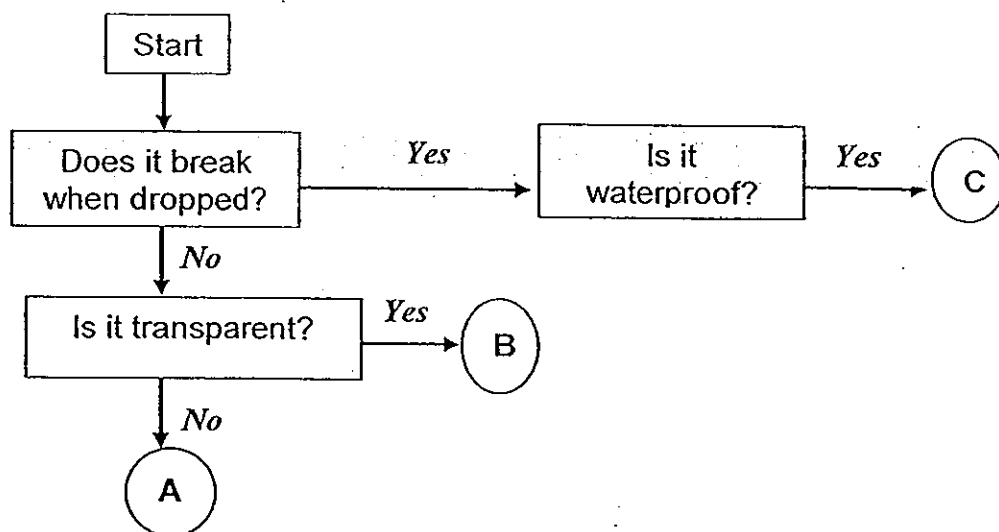
12. Cherie put some objects into a tank as shown in the diagram below. She then poured water into the tank till it was half full.



Which of the following shows what will happen after Cherie has added in half a tank of water?

	keys	marble	ping pong ball	rubber duck
1)	float	float	sink	sink
2)	sink	float	sink	float
3)	float	sink	sink	float
4)	sink	sink	float	float

13. Study the flow chart below.



What can A, B and C be?

	A	B	C
(1)	clear plastic	wood	glass
(2)	ceramic	glass	clear plastic
(3)	glass	fabric	wood
(4)	metal-	clear plastic	ceramic

14. Jason tested four materials (W, X, Y and Z) for hardness and made the following conclusions:

Material W can scratch material Y but <u>not</u> material X.
Material Z can scratch material W but <u>not</u> material X.
Material Y can be scratched by materials W, X and Z.

Which of the following shows the correct arrangement of the materials in order of hardness, from the softest to the hardest?

	← Softest		Hardest →
(1)	X	Z	W Y
(2)	Z	Y	W X
(3)	Y	W	Z X
(4)	W	X	Y Z

15. The picture below shows a swing at the children's playground.



Below are some facts about the different types of materials.

Material	Durable?	Waterproof?	Breaks easily ?
A	Yes	Yes	No
B	No	No	Yes
C	Yes	No	Yes
D	No	No	No

Which would be the best material to make the swing seat?

- 1) A
- 2) B
- 3) C
- 4) D

