

Pei Chun Public School
Continual Assessment - 2008
Science
Primary 3

Name : _____ () Date : 22 August 2008

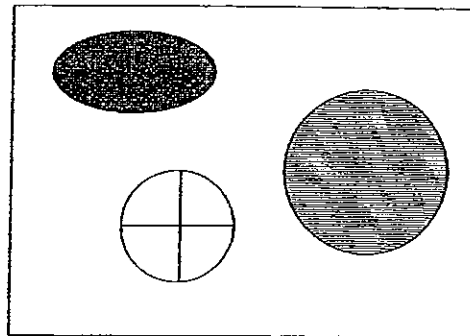
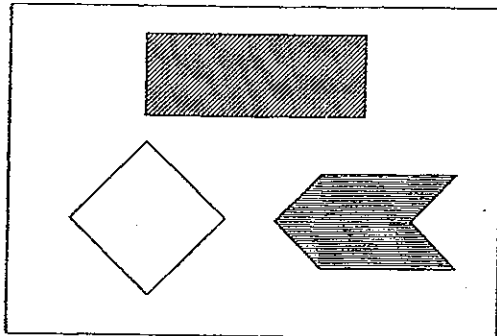
Class : Pri. 3 ()

Science Teacher : _____ Time : 1h 30 min

Section A (25 × 2 marks)

For questions 1 to 25, choose the most suitable answer and shade its number (1, 2, 3 or 4) on the Optical Answer Sheet (OAS) provided.

1.

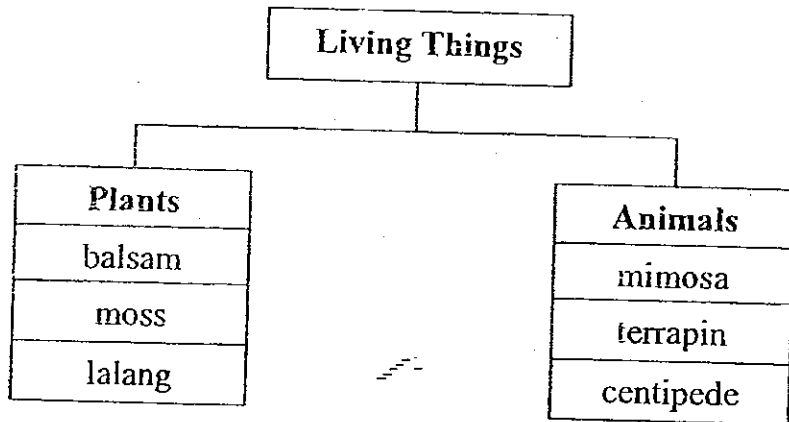


The above objects are grouped according to _____

- (1) their shapes
- (2) their colours
- (3) the patterns on them
- (4) whether they have corners

()

2. Study the classification diagram below.

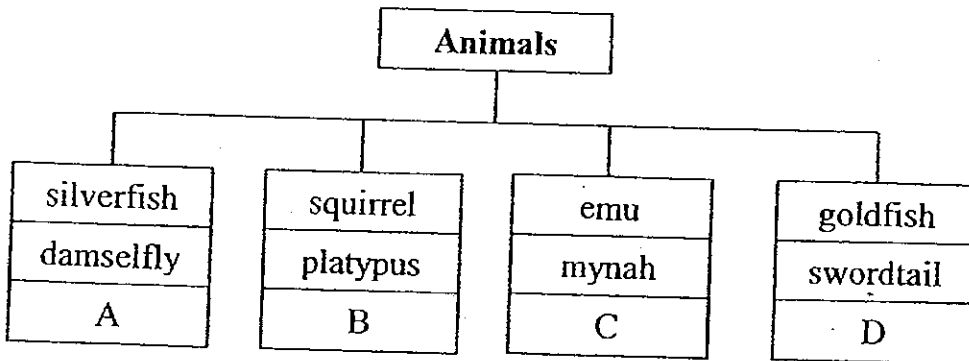


Which living thing above has been grouped wrongly?

- (1) centipede
- (2) mimosa
- (3) balsam
- (4) lalang

()

3. The classification diagram below shows how some animals can be grouped.



What are A, B, C and D likely to be?

	A	B	C	D
(1)	tick	seagull	bat	kingfisher
(2)	millipede	meerkat	penguin	angelfish
(3)	mosquito	whale	ostrich	shark
(4)	grasshopper	porcupine	parrot	frog

()

4. Which of the following does/do not show the characteristics of a living thing?

- A : A seed grows into an adult plant.
 B : A deer runs away from its enemies.
 C : A young plant is bent by a strong wind.
 D : A dog hangs out its tongue on hot days.

- (1) C only
 (2) D only
 (3) A and B only
 (4) B and D only

()

5. Aini put some pebbles, guppies and plastic plants into an aquarium. She fed the guppies every day. She counted and recorded the number of pebbles, guppies and plastic plants over the next eight weeks as shown below.

Things	Week 0	Week 4	Week 8
pebbles	10	10	10
guppies	20	23	27
plastic plants	5	5	5

What can Aini conclude from the above experiment?

- A : Only living things can grow.
 B : Only living things need food.
 C : Only living things can reproduce.
 D : Only living things can make food.

- (1) A only
 (2) B only
 (3) B and C only
 (4) C and D only

()

6. The diagram below shows a few green pea pods.



The pea is the _____.

- (1) flower
- (2) shoot
- (3) seed
- (4) fruit

()

7. Which of the following parts of a tree give the tree its shape?

- A : roots
- B : trunk
- C : leaves
- D : branches

- (1) A and B only
- (2) B and C only
- (3) A, C and D only
- (4) B, C and D only

()

8. The diagram below shows parts of Plant X.



From the diagram, how does the stem of another plant help Plant X?

- (1) It provides food for Plant X.
- (2) It provides ~~water~~^{water} for the stem of Plant X.
- (3) It helps Plant X to take in air from its surroundings.
- (4) It helps Plant X to receive as much sunlight as possible.

()

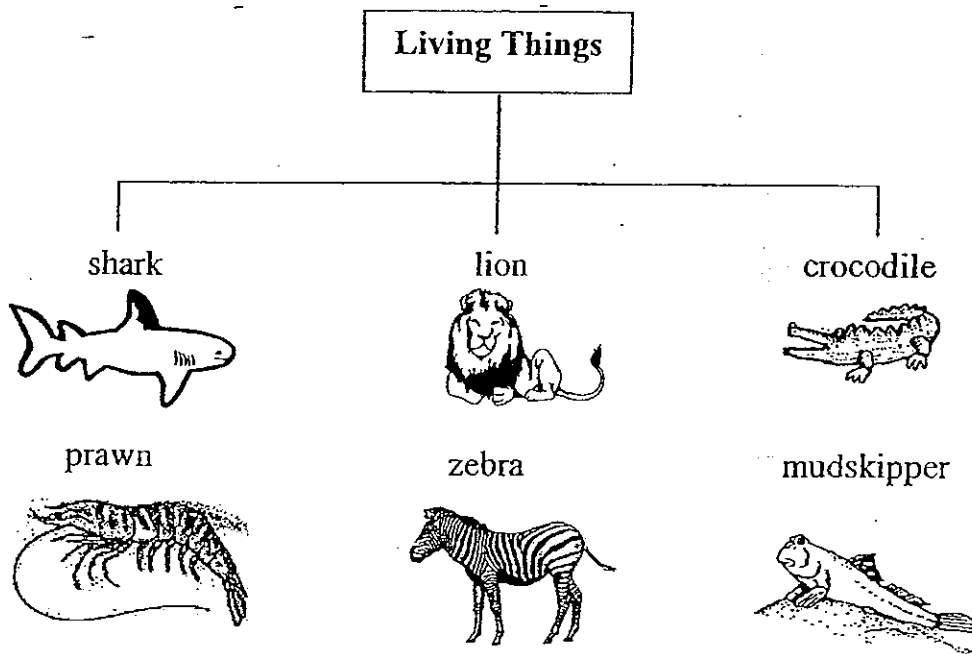
9. Which of the following statements show that living things respond to changes around them?

- A: The leaves of a rain tree close up in the evening.
- B: An elephant fans its ears to cool itself.
- C: The heart of a tiger beats all the time.
- D: A flower drops to the ground.

- (1) A and B only
- (2) A and D only
- (3) B and C only
- (4) C and D only

()

10. Some living things have been classified as shown below.

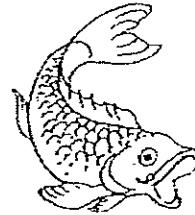
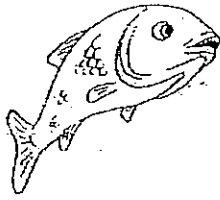


The living things are classified according to _____.

- (1) their body covering
- (2) the way they move
- (3) where they live
- (4) what they eat

()

11. The diagrams below show different types of fishes.



Based on the diagrams, what are the common characteristics of these fishes?

- A: They lay eggs.
- B: They have fins.
- C: They have a tail.
- D: They live in the sea.

- (1) A and C only
- (2) A and D only
- (3) B and C only
- (4) B and D only

()

12. Which of the following is a micro-organism?

	W	X	Y	Z
It responds to changes in the surroundings.	×	✓	✓	✓
It can only be seen through a microscope.	✓	×	×	✓
It can make its own food.	×	×	✓	×

- (1) W
- (2) X
- (3) Y
- (4) Z

()

13. Study the diagrams below.



willow moss



puff balls



fern



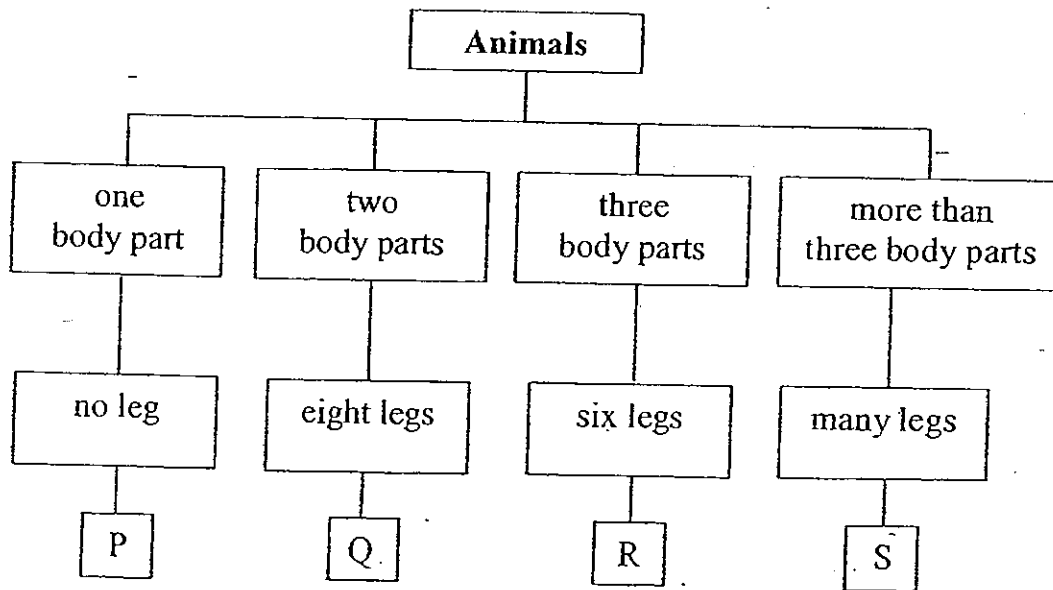
mould

What do the organisms above have in common?

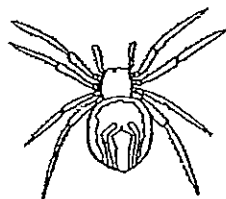
- (1) They are fungi.
- (2) They reproduce by spores.
- (3) They can make their own food.
- (4) They feed on other plants and animals.

()

14. Study the classification diagram below.



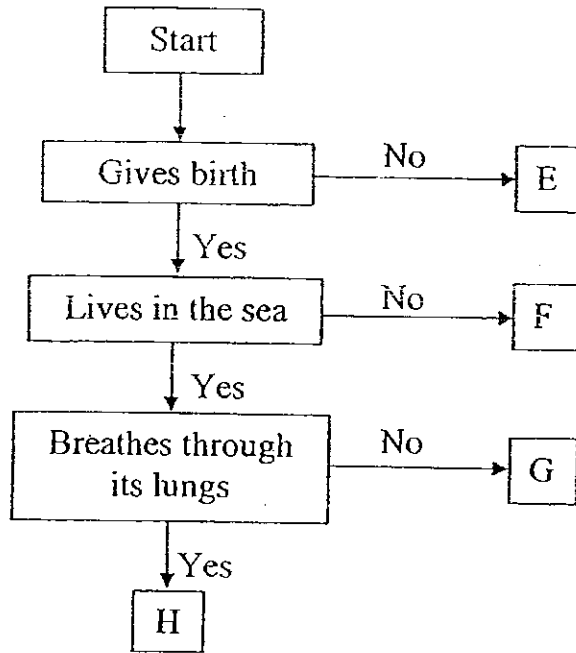
Which letter, P, Q, R or S, represents the animal below?



- (1) P
- (2) Q
- (3) R
- (4) S

()

15. The flowchart below shows the characteristics of four different animals.



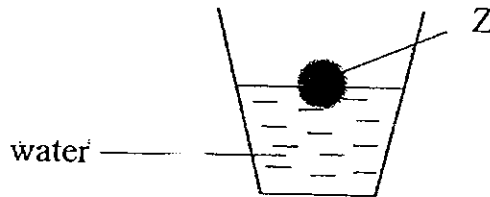
Which letter, E, F, G or H, matches the animal shown below?



- (1) E
- (2) F
- (3) G
- (4) H

()

16.

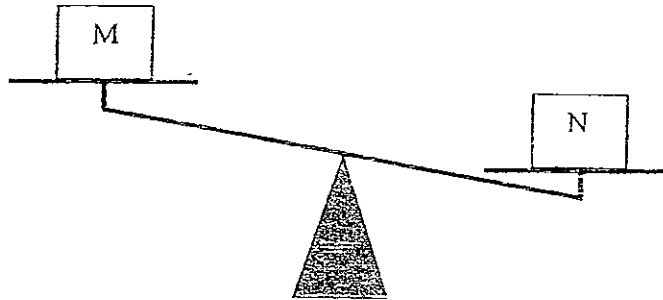


The material used to make solid Z is most likely to be _____.

- (1) wood
- (2) metal
- (3) glass
- (4) clay

()

17. Two boxes, M and N, are placed on a balance.



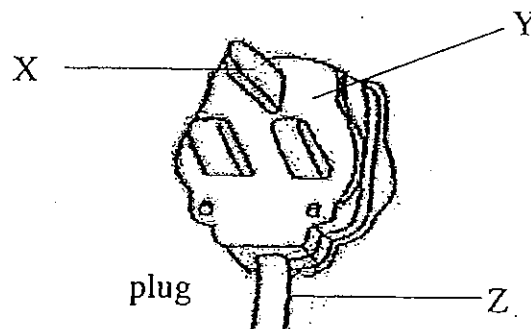
Based on only what you can see in the diagram above, which of the following statements is/are definitely true?

- A: Box M is empty.
- B: Box N is made of metal.
- C: Boxes M and N contain different things.
- D: Box N and its contents is heavier than Box M.

- (1) D only
- (2) C and D only
- (3) A and B only
- (4) A, B, C and D

()

18. Which of the following correctly shows the materials used to make the parts X, Y and Z?



	X	Y	Z
(1)	rubber	plastic	metal
(2)	metal	plastic	rubber
(3)	metal	rubber	plastic
(4)	rubber	metal	plastic

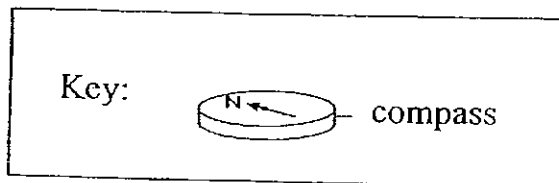
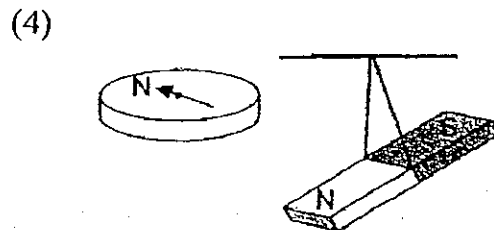
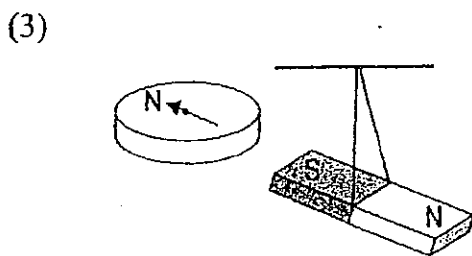
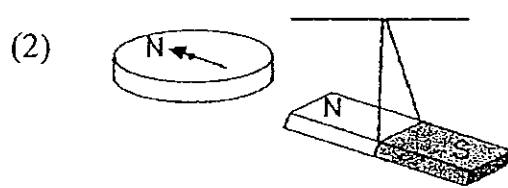
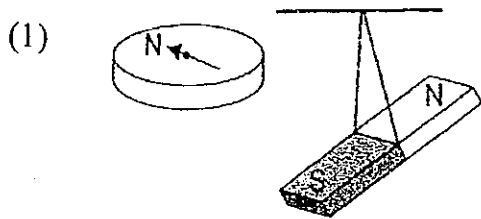
()

19. Mr Rahman wants to buy a rubber ball for his two-year-old son. Rubber is used to make such toys because it is _____.

- (1) stiff
- (2) light
- (3) shiny
- (4) breakable

()

20. A magnet is left to turn freely as shown. Which of the following shows the correct position of the magnet at rest?



()

21. A magnet can lose its magnetism if it is _____.

- A: stored in oil
- B: heated over fire
- C: dropped many times
- D: hammered many times

- (1) A and D
- (2) A, B and D
- (3) A, C and D
- (4) B, C and D

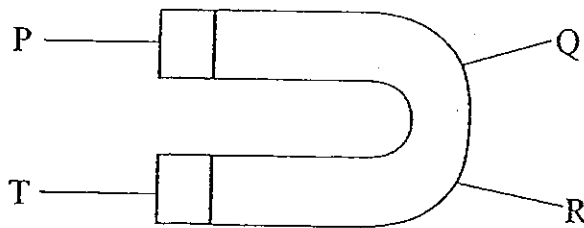
()

22. We can find magnets in a _____.

- (1) bulb
- (2) battery
- (3) ~~toaster~~ kettle
- (4) refrigerator

()

23. To find out which part of the magnet is the strongest, Siti brought the magnet close to a pile of paper clips.



Which of these readings is likely to be correct?

Number of paper clips attracted by the magnet				
	P	Q	R	T
(1)	5	1	2	5
(2)	5	3	3	2
(3)	3	2	3	5
(4)	1	5	5	5

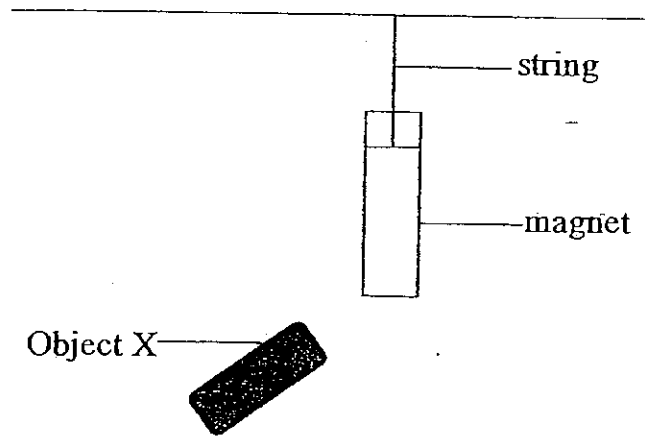
()

24. What will happen when a bar magnet is cut into two equal halves?

- (1) The bar magnet will gain strength.
- (2) The bar magnet will lose all of its strength.
- (3) Each half will become a magnet with a North pole and a South pole.
- (4) One half will become the North pole and the other half will become the South pole.

()

25. In the diagram below, when object X is brought near the magnet, the magnet moves towards it. Three pupils make a statement each about object X.



- Paul : X is a magnet.
Ali : X is a bronze bar.
Sue : X is a magnetic material.

Whose statement(s) is/are definitely correct?

- (1) Sue
- (2) Ali
- (3) Paul and Ali
- (4) Paul and Sue

()

For Questions 26 to 30, please refer to Booklet K.

End of Section A

**Pei Chun Public School
Continual Assessment – 2008
Science
Primary 3**

Name: _____

Class: 1

Date: 22 August 2008

Time: 1 hr 30 min

Science Teacher: _____

Parent's Signature: _____

Section A	60
Section B	30
Booklet K (excludes MCQ)	10
Total	100

Section B (30 marks)

For questions 31 to 42, write your answers in the spaces provided.

31. Guo Hua and his friends are going to a barbecue. They buy disposable forks, spoons, plates and cups. They are made of the same material.

a) Name the material that the disposable items can be made of: (1 m)

b) Suggest two reasons why the material in (a) is used. (2 m)

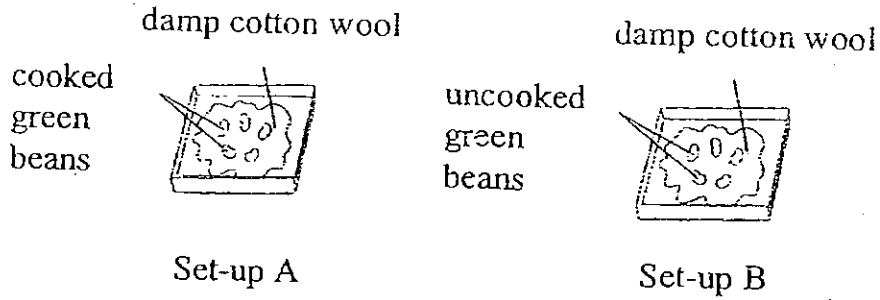
i) _____

ii) _____

SCORE

--

32. Alan prepared two set-ups shown below. He placed them near a window.

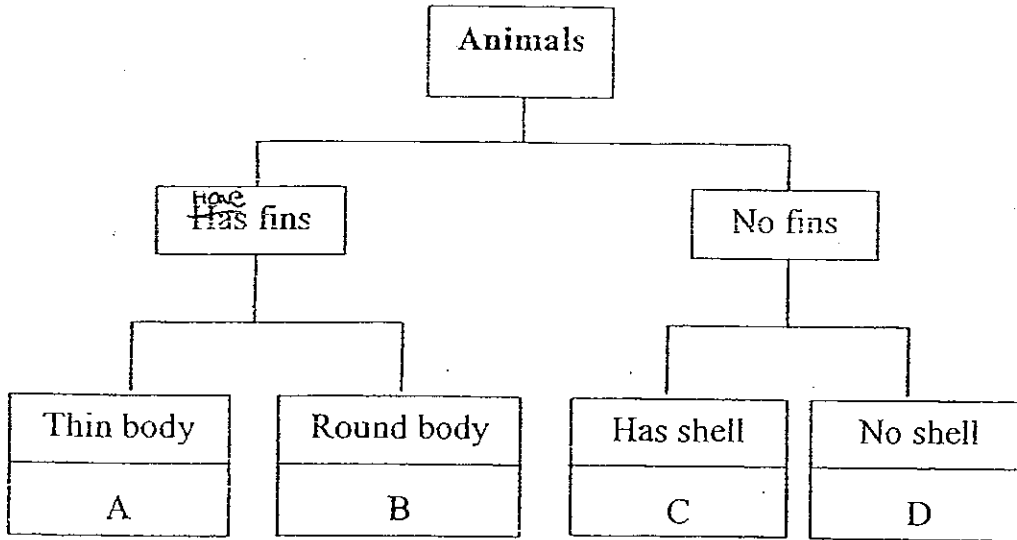


a) What will Alan observe about the green beans after a few days? (1 m)

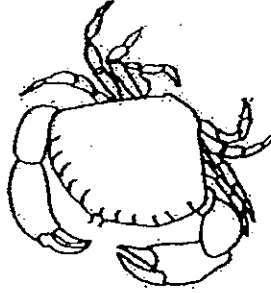
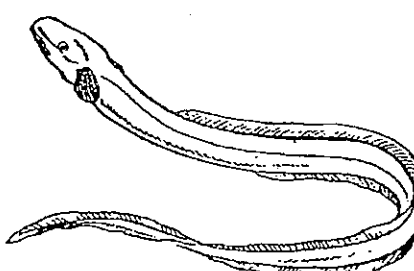
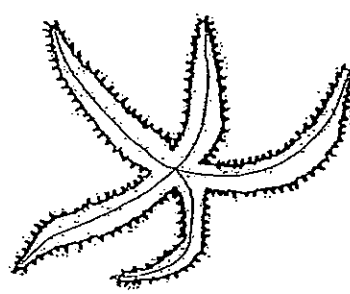
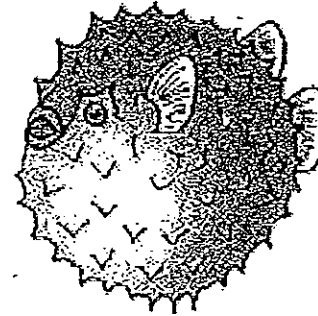
b) Give a reason for your answer in (a). (1 m)

SCORE

33. Study the classification diagram below carefully.

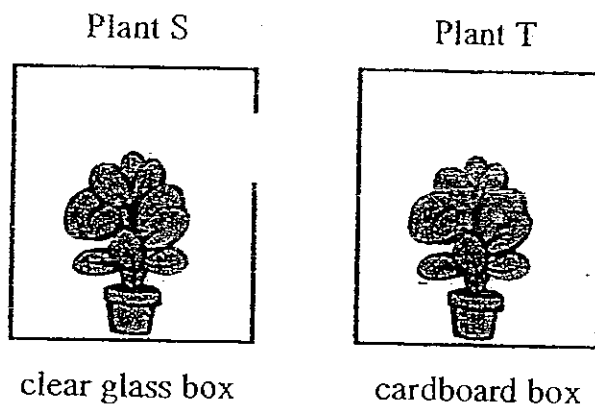


Based on the diagrams below, match the animals with the letters given above. Write your answer in the given boxes. (2 m)

 <div style="display: inline-block; width: 40px; height: 40px; border: 1px solid black; margin-left: 20px;"></div>	 <div style="display: inline-block; width: 40px; height: 40px; border: 1px solid black; margin-left: 20px;"></div>
 <div style="display: inline-block; width: 40px; height: 40px; border: 1px solid black; margin-left: 20px;"></div>	 <div style="display: inline-block; width: 40px; height: 40px; border: 1px solid black; margin-left: 20px;"></div>

SCORE

34. Limei set up 2 boxes as shown below. The boxes were placed side by side near an open window. She watered the plants daily.

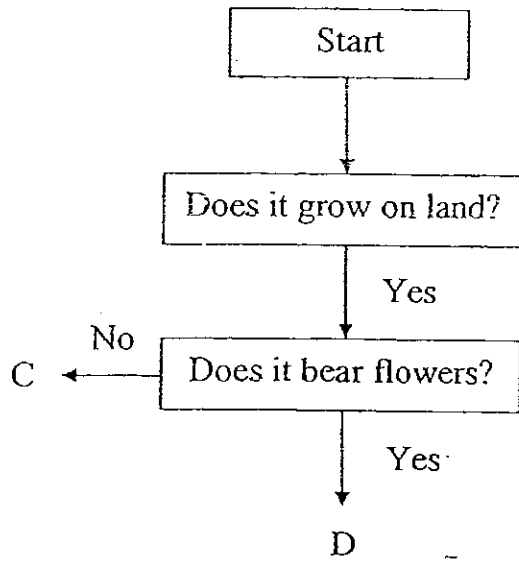


- a) Which of the plants would grow towards the opening in the boxes after a week? (1 m)

- b) Explain why Plant S and Plant T grew in a different way. (1 m)

SCORE

35. The flowchart below shows the characteristics of plants C and D.



a) Based on the information in the flowchart, name two characteristics of Plant C.

(2 m)

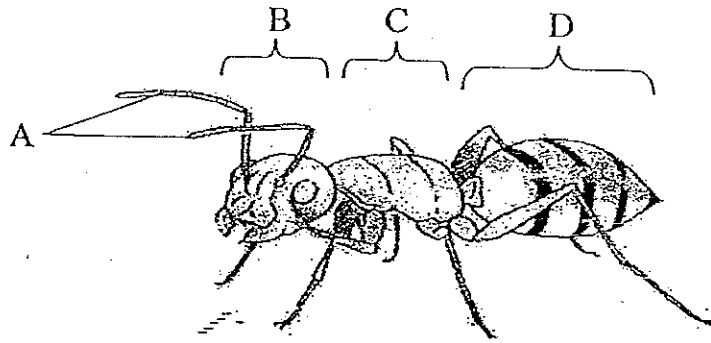
b) Which plant, C or D, represents 'moss'?

(1 m)

SCORE

--	--

36. The diagram below shows parts of an insect.



a) Name its parts, A, B, C and D, using the table below.

(2 m)

A	
B	
C	
D	

b) Look at the animal below.



Is the above animal an insect? Give one reason for the answer.

(1 m)

SCORE

--	--

37. The table below shows the characteristics of 4 different mammals.

Characteristics	Mammal E	Mammal F	Mammal G	Mammal H
Has hair	yes	yes	yes	yes
Lays eggs	no	no	no	yes
Feeds its young with milk	yes	yes	yes	yes
Has a beak	no	no	no	yes

a) From the table above, tick (✓) the statement(s) that best describe(s) a mammal. (2 m)

It has a beak.

It has hair.

It lays eggs.

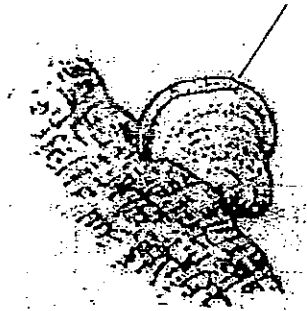
It feeds its young with milk.

b) Based on the characteristics given in the table above, what can Mammal H be? (1 m)

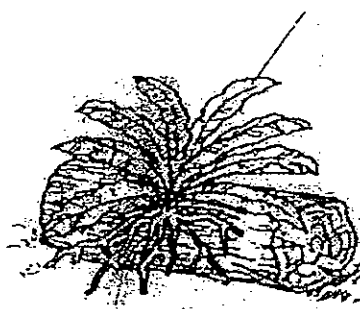
SCORE

38. Look at the diagrams below carefully.

bracket fungus



bird's nest fern



Based on what you can see in the diagrams, write one similarity and one difference between the two living things.

(Do not compare colour, shape and size.)

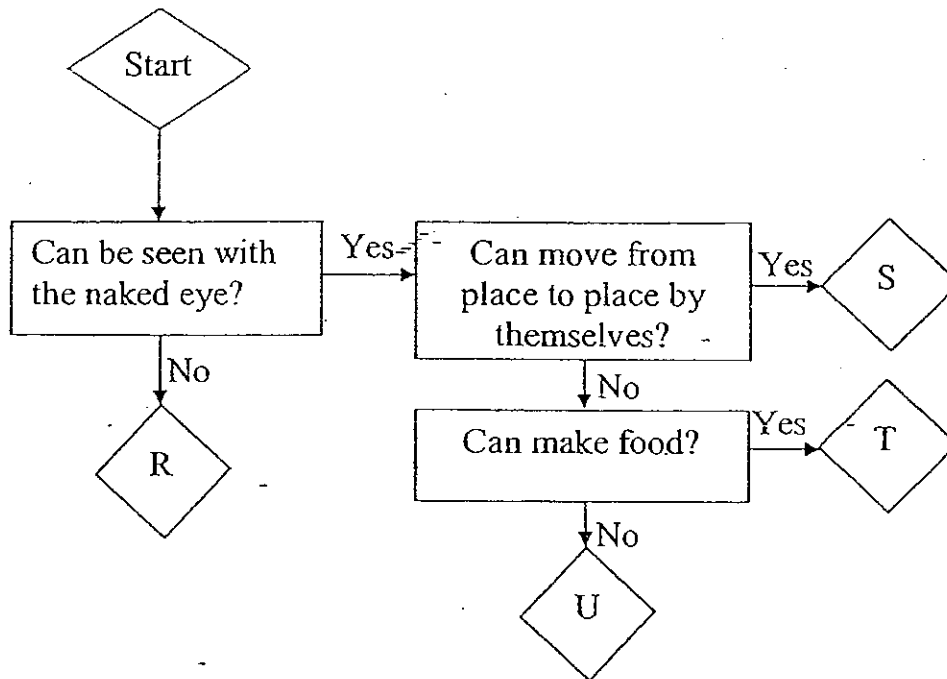
(2 m)

Similarity : _____

Difference : _____

SCORE [

39. The flowchart below is used to show the similarities and differences among four living things.



Based on the information in the flowchart, answer the following questions.

- a) Yeast is a micro-organism. Which of the living things, R, S, T, U, can yeast be? (1 m)

- b) State one similarity between living things S and T. (1 m)

- c) State one difference between living things T and U. (1 m)

SCORE

--

40. The table below shows the properties of materials, E, F, G and H.

Materials	E	F	G	H
Can be stretched	x	✓	x	✓
Breaks easily when dropped	✓	x	x	x
Is waterproof	✓	✓	✓	x

a) Which material, E, F, G or H, would you use to make a swimming cap to keep your hair dry?

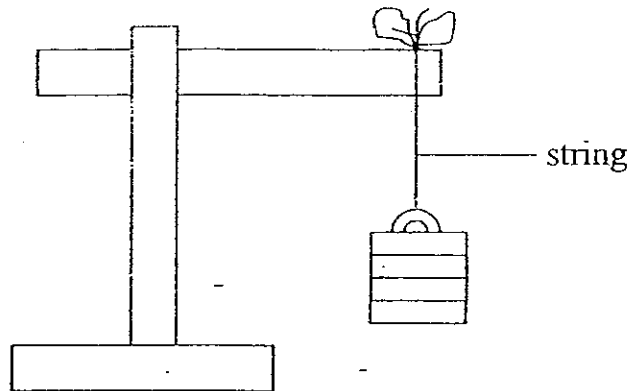
($\frac{1}{2}$ m)
 $\frac{1}{2}$

b) What are the properties of the material in (a) that makes it suitable to be made into a swimming cap?

(1½ m)

SCORE

41. Hao Ming has 4 different types of strings. He wants to find out how strong the 4 types of strings are. He adds weights to each string as shown in the diagram below until the string breaks.



The table below shows how much weight each string can hold before breaking.

	Weight it can hold before breaking
String A	★ ★ ★ ★ ★ ★
String B	★ ★ ★ 3kg
String C	★ ★ ★ ★ ★ ★ ★
String D	★ ★ ★ ★ ★ ★ ★ ★

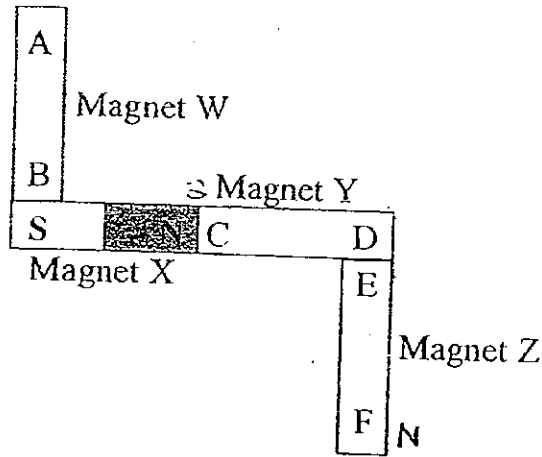
Key : 1 ★ represents 1 kg

- a) Which string is the strongest? (1 m)

- b) Explain your answer in (a). (2 m)

SCORE

42. Four bar magnets are placed together and their ends are marked as shown in the diagram. Only the poles of one of the magnets have been identified.



What would happen when the ends of the magnets stated in the table below are brought close to each other?
Put a tick (✓) in the correct boxes.

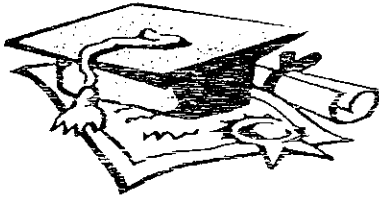
(2 m)

Ends that are brought close together	Attract	Repel
A and D		
A and F		
B and C		
C and E		

SCORE

For Questions 43 to 46, please refer to Booklet K.

End of Paper



ANSWER SHEET

EXAM PAPER 2008

SCHOOL : PEI CHUN PRIMARY SCHOOL
 SUBJECT : PRIMARY 3 SCIENCE

TERM : CA 2

Q1	Q2	Q3	Q4	Q5	Q6	Q7	Q8	Q9	Q10	Q11	Q12	Q13	Q14	Q15	Q16	Q17
4	2	3	1	3	3	4	4	1	3	3	4	2	2	4	1	1

Q18	Q19	Q20	Q21	Q22	Q23	Q24	Q25
2	2	2	4	4	1	3	1

31)a)The material is plastic.

b)i)It is light. ii)It is waterproof.

32)a)Alan will observe that the beans in set-up B has already become seedling while the beans in set-up A will not grow.

b)The seeds in set-up A are dead but the seeds in set-up B are alive.

33)C A

D B

34)a)Plant T would grow towards the opening in the box after a week.

b)Plant S could receive sunlight through the clear glass box but light cannot pass through the cardboard box to reach plant T.

35)a)i)It grows on land. ii)It does not bear flowers.

b)Plant C represents 'moss'.

36)a)A: antennae B: head C: thorax D: abdomen
b)No. It has more than 3 body parts but an insect has 3 body parts.

37)a)It has hair , It feeds its young with milk
b)Mammal H can be a platypus.

38)Similarity: They grow on anything dead or alive.
Difference: Bird's nest fern has leaves while bracket fungus has no leaves.

39)a)Yeast can be R.
b)It can be seen by the naked eye.
c)T can make while U cannot make food.

40)a)Material F.
b)It can be stretched, does not break easily and is waterproof.

41)a)String D is the strongest.
b)It can carry the most number of weight before breaking.

42)A and D → Attract
A and F → Attract
B and C → Attract
C and E → Repel