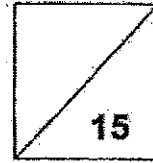


**Henry Park Primary School  
Primary 3 Science  
2021 Weighted Assessment 2**






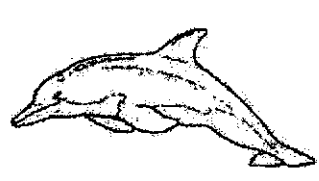
Name: \_\_\_\_\_ (    )

Class: Primary 3 \_\_\_\_\_

Parent's Signature: \_\_\_\_\_

**Question 1**

The pictures show some living things. Match the living things to the way they reproduce by ticking (✓) the correct boxes in the table below. [2]

		Living Things			
		How they reproduce			
		Giving birth to young alive	Lay eggs	By seeds	By spores
a)					
b)					
c)					
d)					



**Question 2A**

You are given a packet of buttons. Observe the buttons carefully and answer the questions.

The buttons are labelled A, B, C, D, E, F, G and H.

State two characteristics of the buttons. *An example has been done for you.*

**Characteristic 1:** *They are of different colours.*

**Characteristic 2:** *Some are smooth and some are rough.*

Other than the characteristics stated above, write down two other characteristics that you can observe. [2]

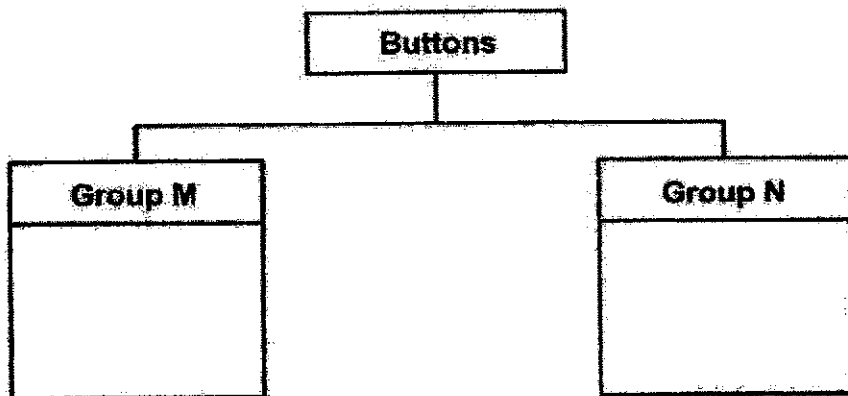
**Characteristic 3:** \_\_\_\_\_

**Characteristic 4:** \_\_\_\_\_

**Question 2B**

Classify the buttons into two groups, M and N.

Write down the letters (A, B, C, D, E, F, G and H) in the boxes below to show how you have classified the buttons. *(Do not compare the size of the buttons.)* [1]



Based on your classification, write down suitable headings for Groups M and N. [1]

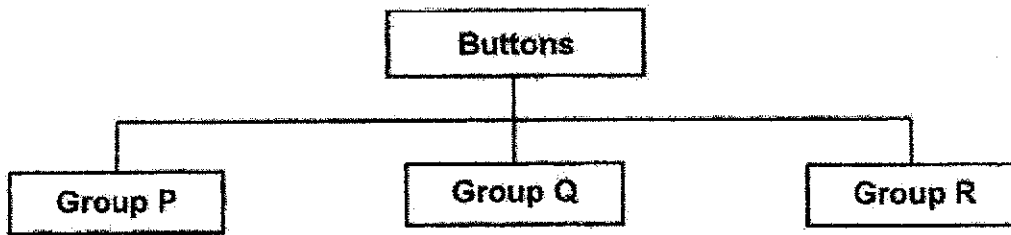
i) **Group M:** \_\_\_\_\_

ii) **Group N:** \_\_\_\_\_



**Question 2C**

Now, classify the buttons into three groups, P, Q and R, as shown below.



Based on your classification, write down suitable headings for groups P, Q and R.  
(Do not compare the size of the buttons.)

[1]

i) Group P:

---

ii) Group Q:

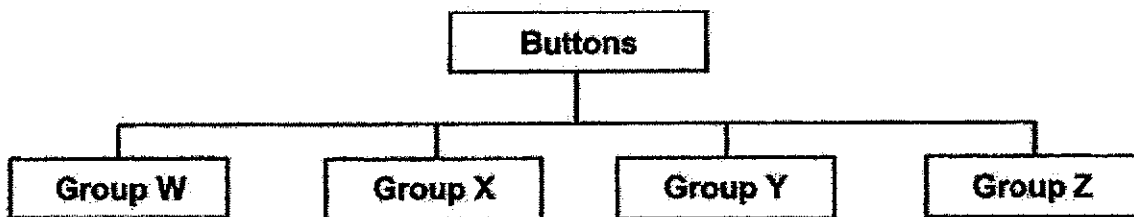
---

iii) Group R:

---

**Question 2D**

Now, classify the buttons into four groups, W, X, Y and Z, as shown below.



i) Based on your classification above, state one property that you used to classify the buttons into Groups W, X, Y and Z.

[1]

---

Now, raise your hand and ask your teacher for **Button J**.

ii) Observe **Button J**. Are you able to classify **Button J** into groups W, X, Y or Z?  
Explain your answer.

[1]

---

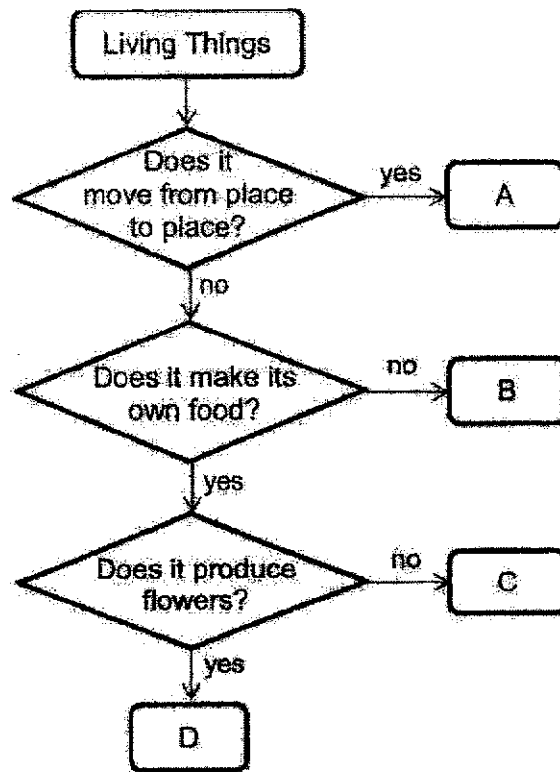


---

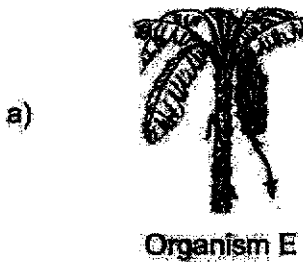


**Question 3**

Study the chart below.



Based on the chart above, which of the following groups do organisms E and F belong to? Write the letter A, B, C, or D in the correct boxes. [2]



**Question 4**

Fill in the blanks in the classification chart based on the characteristics observed among animals in each animal group. An example has been done for you. [4]

Characteristics	Animal Groups		
	Amphibians	Fish	Birds
a) Where they live			Lives on land
b) Outer covering	Has moist skin		



**SCHOOL** : HENRY PARK PRIMARY SCHOOL  
**LEVEL** : PRIMARY 3  
**SUBJECT** : SCIENCE  
**TERM** : WEIGHTED ASSESSMENT 2

Q1	a) By seeds b) Lay eggs c) By Spores d) Giving birth to young alive		
Q2	Practical		
Q3	a) D b) A		
Q4	(a) And (b)		
	<b>Characteristics</b>	<b>Animal Groups</b>	
		<b>Amphibians</b>	<b>Fish</b>
	<b>Where they live</b>	Lives on land and in water	Lives in water
	<b>Outer covering</b>	Has moist skins	Has scales
			<b>Birds</b>
			Lives on land
			Has feathers

