

0.4

Henry Park Primary School
Primary 3 Science
Weighted Assessment 1

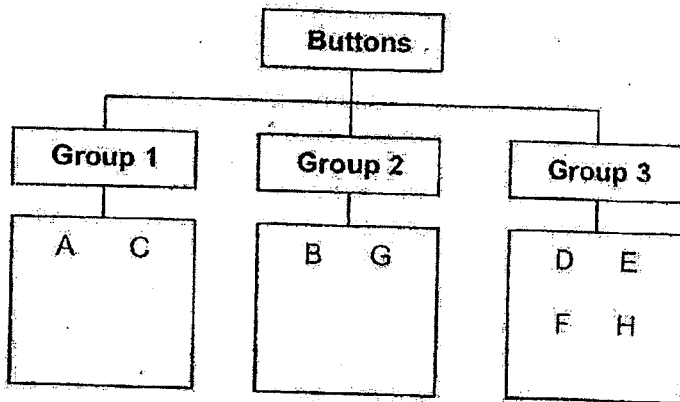
Name: _____ () Class: 3 _____ Marks: _____ / 15

Write your answers to the following questions in the spaces given. Each question carries 3 – 5 marks.

Question 1 – Performance Task on Classification (Duration: 15 minutes)

Observe the buttons (A, B, C, D, E, F, G and H) given to you.

The classification table below shows the buttons being classified into 3 groups.



(a) Write a suitable heading for each group given above.

[3]

Group 1 : _____

Group 2 : _____

Group 3 : _____

Question 1 continued

(b) Observe and compare the characteristics of button C and button F.

State one difference between buttons C and F.

[1]

Henry Park Primary School
Primary 3 Science
Weighted Assessment 1

Name: _____ ()

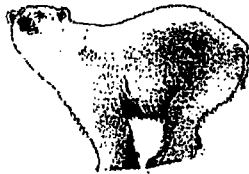
Class: 3 _____

Question 2.

Duration: 25 minutes

a) Draw lines to match the following things to the correct groups.

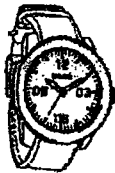
[2]



Living thing



Non - living thing

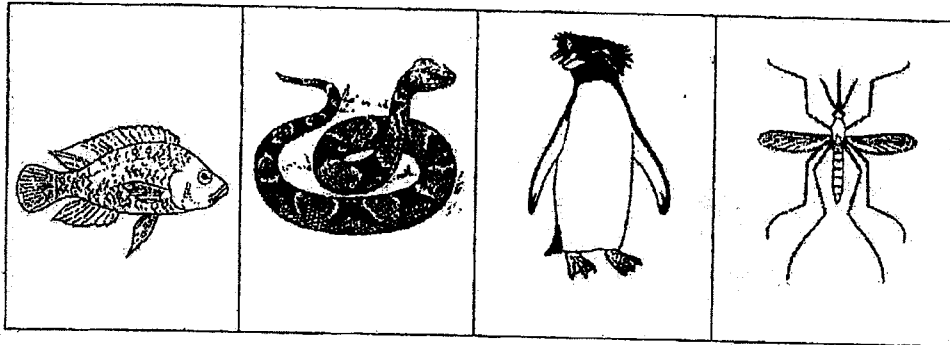
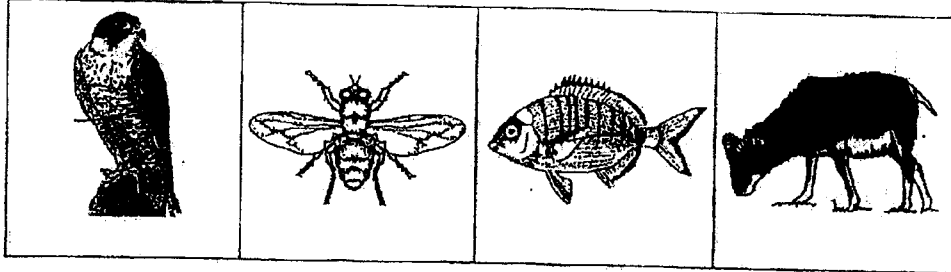


b) Why do we classify things?

[1]

Question 2 continued

c) The pictures represent 8 animals.



From the pictures given, write down the correct number of animals in each of the following animal groups.

[2]

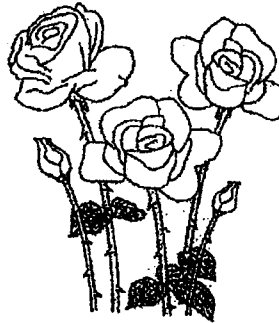
Animal Groups			
Mammal	Fish	Insect	Bird

Question 3

Study the diagrams of plants G and H shown below.



Plant G



Plant H

Based on the diagrams given, tick (✓) the correct statement(s) given.

[1]

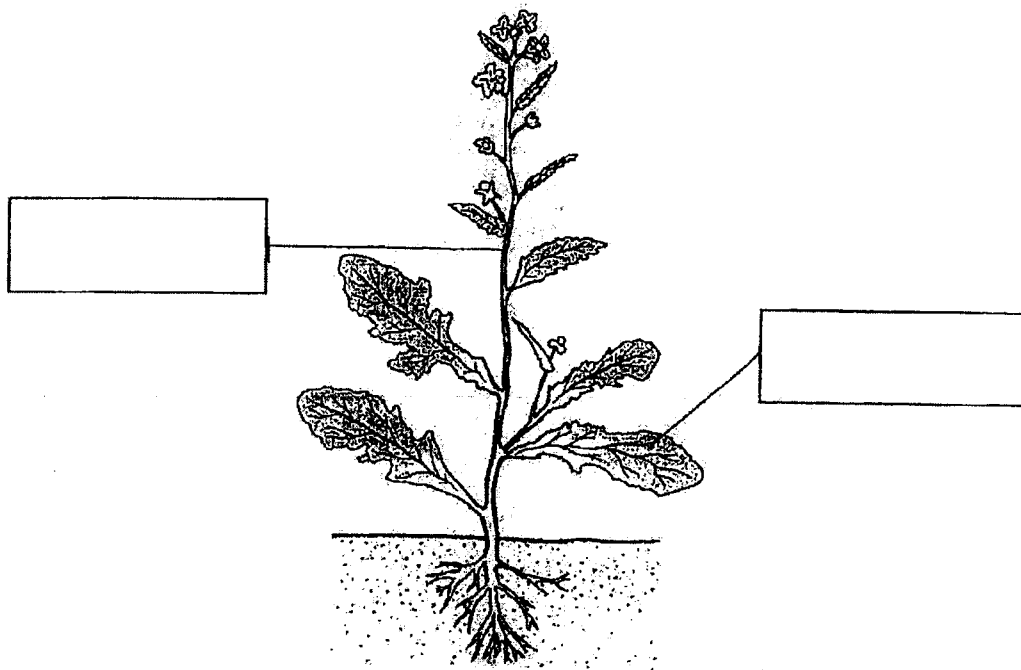
- (a) Both produce flowers.
- (b) Both make their own food.
- (c) Both reproduce from spores.
- (d) Both need air, food and water.

Question 3 continued

Study the picture below.

Using the helping words given, fill in the boxes correctly.

[2]

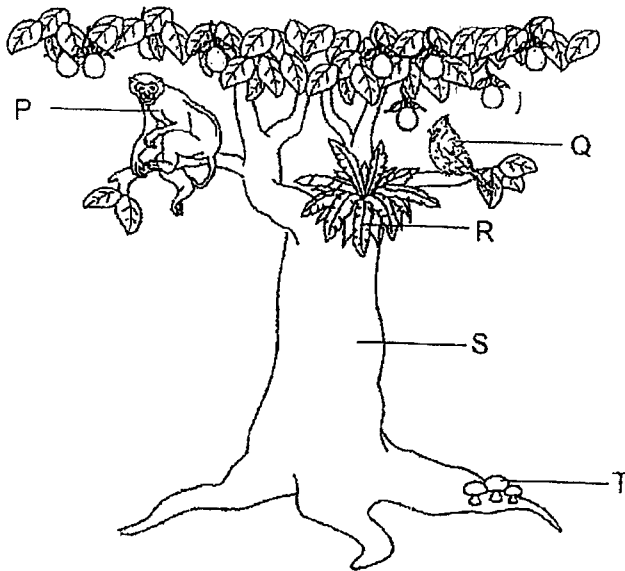


Helping words:

root	flower	fruit
leaf	stem	seed

Question 4

The diagram below shows some living things, P, Q, R, S and T.



Use the letters in the diagram above to answer the following questions.

Based on the diagram above,

(a) name the plants.

[2]

(b) name one living thing that cannot make its own food.

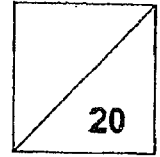
[1]

End of the Booklet





Henry Park Primary School
Primary 3 Science
2023 Weighted Assessment 2



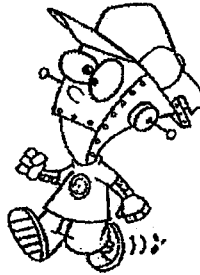
Name: _____ () Duration: 35 minutes

Class: Primary 3 _____ Parent's Signature: _____

Section A (5 x 2 marks)

For each question, four options are given. One of them is a correct answer. Make your choice (1, 2, 3 or 4) and write your answers in the brackets provided at the end of each question.

1. The object shown below can talk and move on its own.



Gavin concluded that the object is a living thing. His classmate told him that he was wrong.

Which statement(s) below explain why Gavin is wrong?

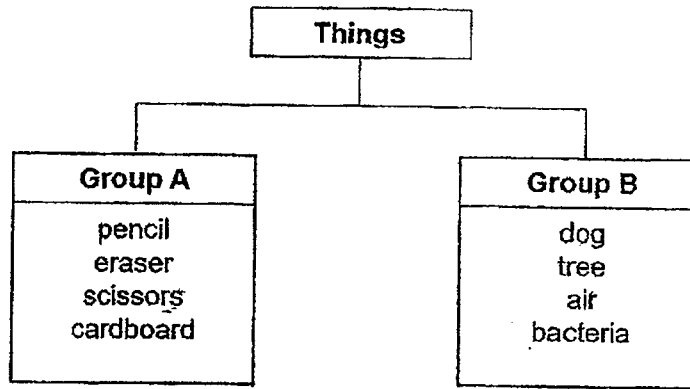
- A The object cannot grow.
- B The object cannot reproduce.
- C The object can respond to changes.

- (1) A only
- (2) C only
- (3) A and B
- (4) A, B and C

()



2. Study the classification table below.



Which of the following things have been classified wrongly?

- (1) air
- (2) dog
- (3) bacteria
- (4) cardboard

()

3. Ming Xuan placed a slice of bread in a plastic bag and kept it in a dark room. He did the same for three other slices but sprinkled different amounts of water on each slice. He observed the number of days the bread took to turn mouldy.

Bread	Amount of water (ml)	Number of days the bread took to turn mouldy
W	0	10
X	3	8
Y	5	5
Z	7	3

Which of the following statements is correct?

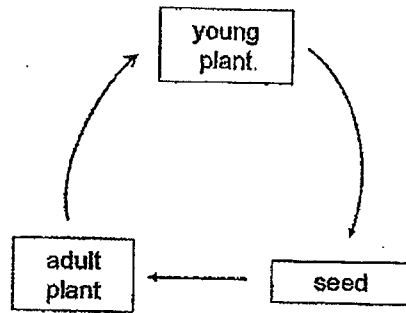
- (1) Bread W was the first to turn mouldy.
- (2) Mould grows best in dry and dark conditions.
- (3) The lesser the amount of water added, the faster the bread turned mouldy.
- (4) The more the amount of water added, the faster the bread turned mouldy.

()

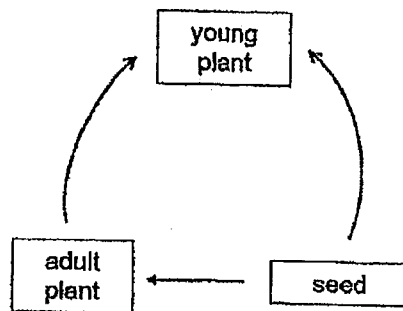


4. Which of the following correctly shows the life cycle of a flowering plant?

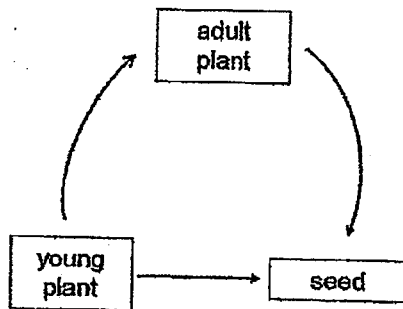
(1)



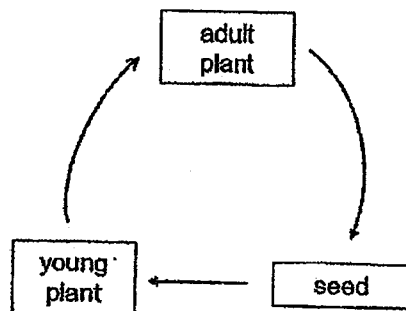
(2)



(3)



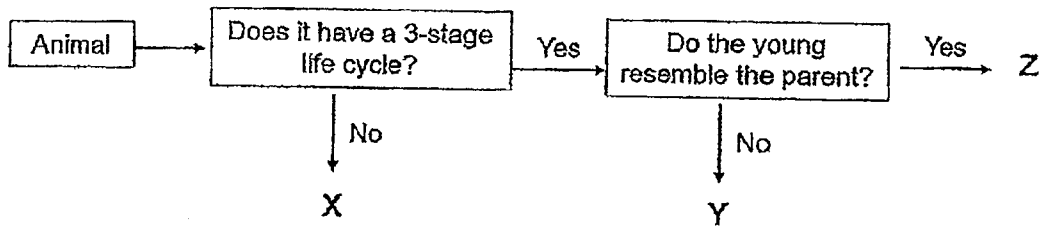
(4)



()



5. Study the chart below.



Which of the following correctly represents animals X, Y and Z?

	X	Y	Z
(1)	Beetle	Cockroach	Chicken
(2)	Mosquito	Frog	Grasshopper
(3)	Grasshopper	Lion	Frog
(4)	Butterfly	Cat	Dog

()



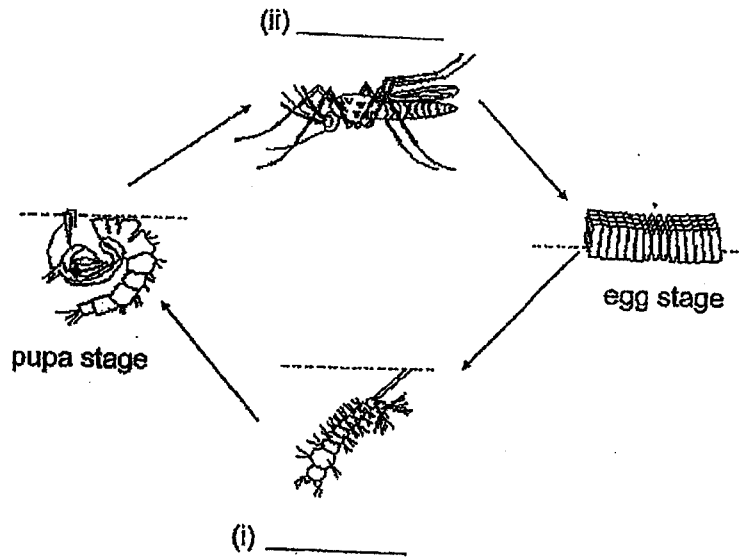
Section B (3 x 2 marks)

Read each question carefully and write the answers in the spaces provided.

6. The pictures below show the four-stage life cycle of a common household pest.

(a) Label the stages next to the pictures in the life cycle below.

[1]

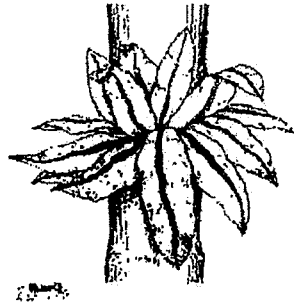


(b) During which stage of its life cycle does the animal not feed?

[1]



7. A pupil saw two organisms, A and B, at her school garden as shown below. Organism A is found on a tree and organism B is found on the ground.



organism A



organism B

She noticed brown spots on the underside of both organisms. Her teacher told her that these brown spots are important for their reproduction.

- (a) What do you think these brown spots are? [1]

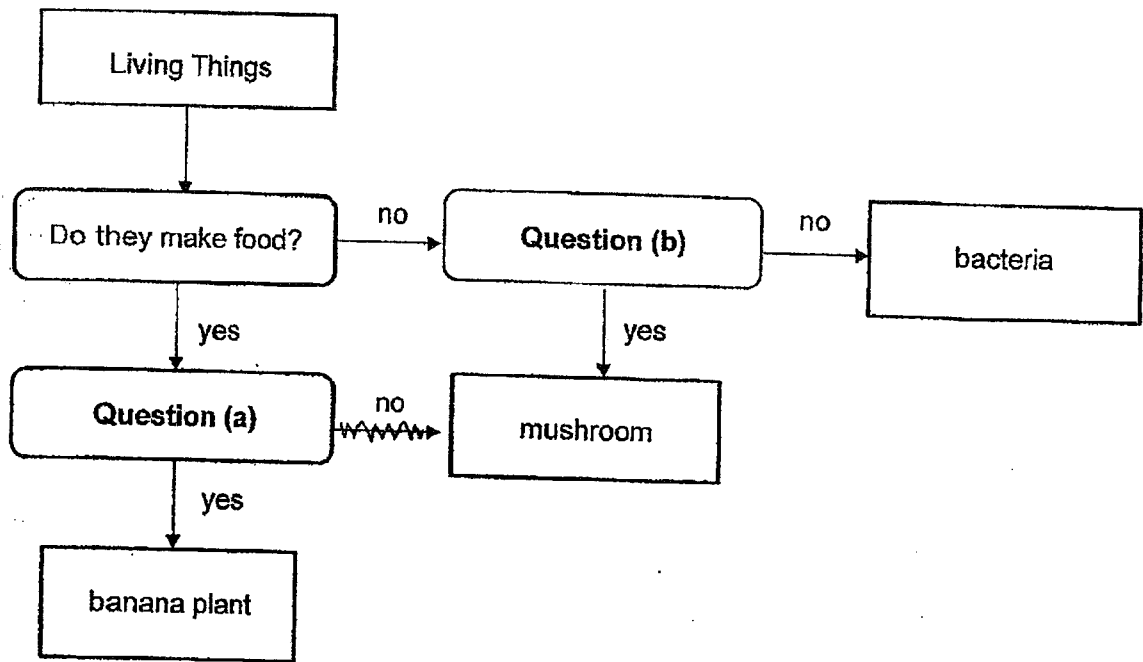
- (b) Which group of living things do these 2 organisms belong to? [1]

Organism A: _____

Organism B: _____



8. The flowchart shows how living things are classified.

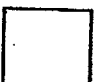


Based on the flowchart above, write down two possible questions for parts (a) and (b).

[2]

Question (a): _____

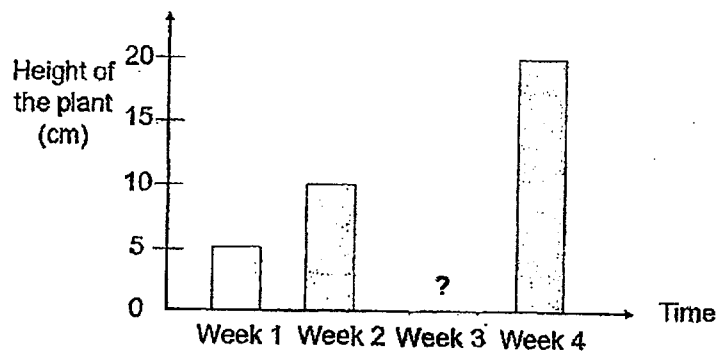
Question (b): _____



Section C (2 x 2m)

Read each question carefully and write the answers in the spaces provided.

9. Ali planted a few seeds in a pot. He placed the pot in a garden and watered it daily. He recorded the height of the seedlings as shown below.

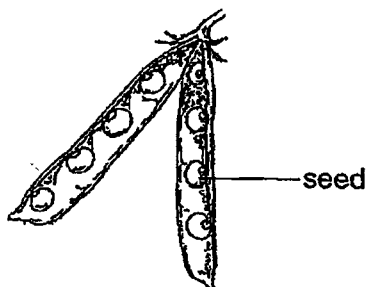


- (a) Predict the height of the plant in week 3.

_____ cm

[1]

Ali found a bean pod in the garden.



- (b) Ali says the bean plant is a non-flowering plant.

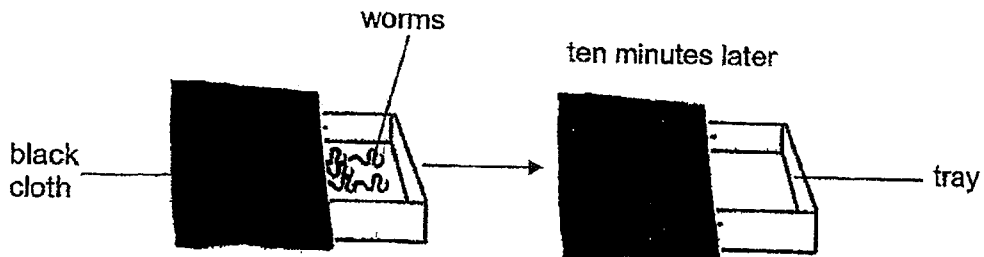
[1]

Do you agree with him? Explain.

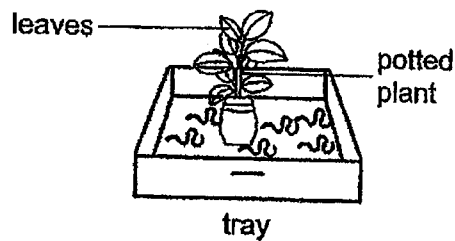


10. Meili conducted an experiment. She placed some worms on a tray and covered half the tray with a piece of black cloth as shown in the set-up below. She then placed the tray out in the garden on a sunny day.

Ten minutes later, she observed that the worms had crawled to the covered part of the tray.



Meili then placed the same number of worms in another tray as shown below and left the set-up out in the garden.



- (a) Where would the worms most likely be found in the second set-up? [1]

- (b) Which characteristic of living things did the worms show in this experiment? [1]

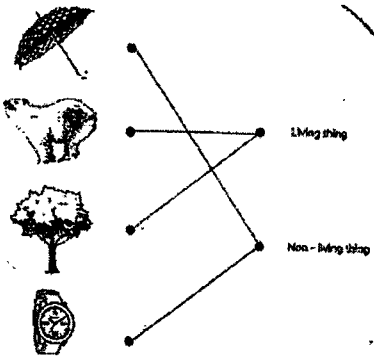
End of Booklet

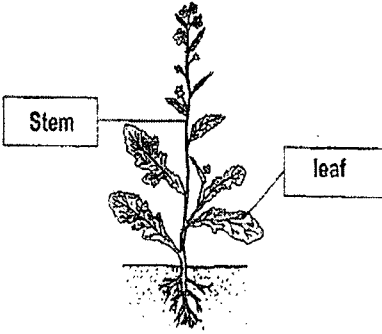


SCHOOL : HENRY PARK PRIMARY SCHOOL
 LEVEL : PRIMARY 3
 SUBJECT : SCIENCE
 TERM : 2023 WA1 & WA2

CONTACT :

WA1

Q1)	<p>(a) Group 1 : Hae no hole Group 2 : Have 2 holes Group 3 : Have 4 holes</p> <p>(b) C is bigger, F is smaller</p>												
Q2)	<p>(a)</p>  <p>(b) It will help to observe things in a more orderly way.</p> <p>(c)</p> <table border="1" data-bbox="502 1422 1236 1601"> <thead> <tr> <th colspan="4">Animal Groups</th> </tr> <tr> <th>Mammal</th> <th>Fish</th> <th>Insect</th> <th>Bird</th> </tr> </thead> <tbody> <tr> <td>1</td> <td>2</td> <td>2</td> <td>2</td> </tr> </tbody> </table>	Animal Groups				Mammal	Fish	Insect	Bird	1	2	2	2
Animal Groups													
Mammal	Fish	Insect	Bird										
1	2	2	2										
Q3)	Tick B and D												

	 <p>The diagram shows a plant with a central stem and several leaves. A box labeled 'Stem' points to the main vertical part of the plant, and a box labeled 'leaf' points to one of the leaves. The plant has a root system shown below the ground line.</p>
Q4)	<p>(a) R and S (b) P, Q and T</p>

WA2

Q1	Q2	Q3	Q4	Q5					
3	1	4	4	2					

Q6)	<p>(a) (i) larva (ii) adult (b) pupa</p>
Q7)	<p>(a) They are spores (b) Organism A : Non-flowering plant Organism B : Fungi</p>
Q8)	<p>(a) Is it a flowering plant? (b) Is it a fungi?</p>
Q9)	<p>(a) 15 cm (b) No. It has seeds. Flowering plants have seeds.</p>
Q10)	<p>(a) Under the leaves (b) Respond to changes</p>