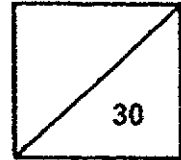


**Red Swastika School**  
**Primary 3 Science**  
**Class Test 1**



Name: \_\_\_\_\_ ( ) Parent's Signature: \_\_\_\_\_

Class: Pr. 3 \_\_\_\_\_ Date: \_\_\_\_\_

**Section A: Multiple-Choice Questions (9 x 2 = 18 marks)**

**Choose the most suitable answer and write its number in the brackets provided.**

1. Which of the following statements is true?

All animals \_\_\_\_\_.

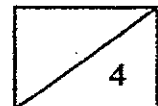
- (1) can fly
- (2) lay eggs
- (3) can walk
- (4) can reproduce ( )

2. Look at the table below.

Living things	Non-living things
tiger	spider
rose plant	doll

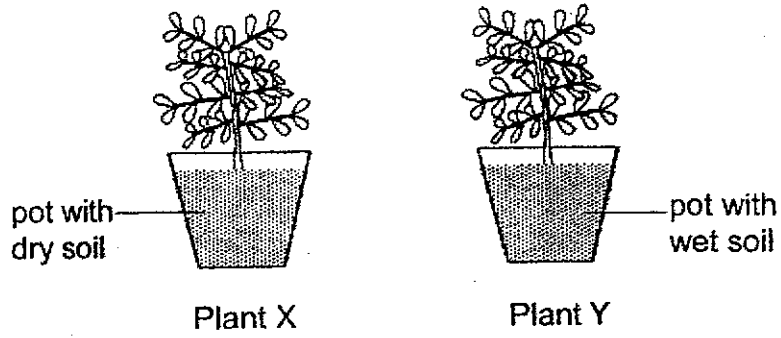
Which item is grouped wrongly?

- (1) doll
- (2) tiger
- (3) spider
- (4) rose plant ( )





3. Mary placed two similar pots of plants, X and Y, in a school garden for a few days. She watered Plant Y daily but not Plant X.



After some time, she observed that Plant X died but Plant Y grew well and taller. She concluded that plants need \_\_\_\_\_ to live.

- (1) air
- (2) food
- (3) light
- (4) water

( )

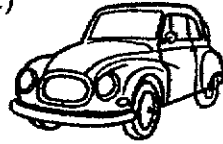
4. Which of the following is a non-living thing?

(1)



tree

(2)



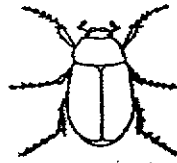
car

(3)



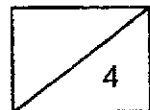
mushroom

(4)

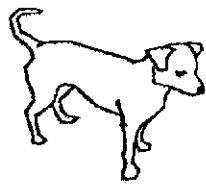


beetle

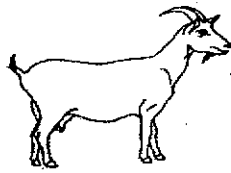
( )



5. Study the four animals below.



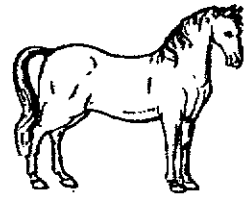
dog



goat



lizard



horse

Which animal does not belong to the same animal group as the others?

- (1) dog
- (2) goat
- (3) lizard
- (4) horse

( )

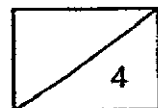
6. The table below shows the characteristics of four animals. A tick (✓) means the animal has the characteristics.

Animal	Has legs	Has feathers	Lives in water
A	✓	✓	
B			✓
C	✓		
D	✓		✓

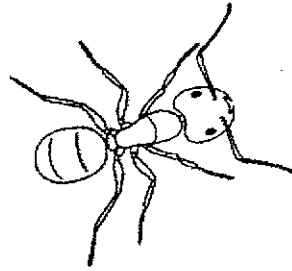
Which animal, A, B, C or D, represents a pigeon?

- (1) A
- (2) B
- (3) C
- (4) D

( )



7. The picture below shows Animal A.



Which characteristic(s) of Animal A is/are more useful in identifying it as an insect?

- A: Number of legs
- B: Presence of three body parts
- C: Length of feelers on its head

- (1) B only
  - (2) C only
  - (3) A and B only
  - (4) A and C only
- (     )

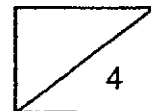
8. The table below shows the characteristic(s) of items A and B. The tick (✓) in the box shows the characteristics the item has.

Characteristic	A	B
Can make its own food	✓	
Respond to changes	✓	✓

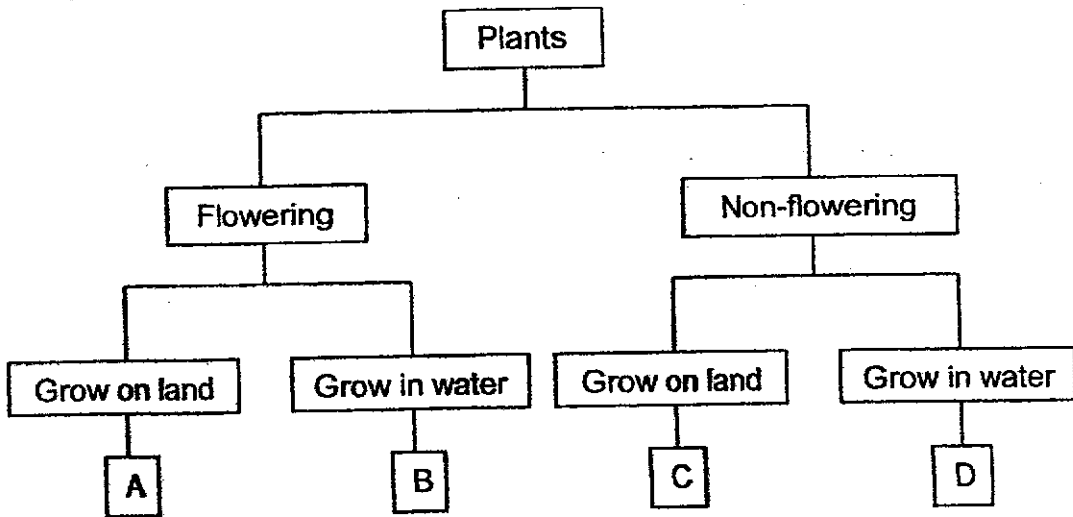
Which of the following sets best represent A and B?

	A	B
(1)	plant	animal
(2)	animal	non-living thing
(3)	non-living thing	plant
(4)	plant	non-living thing

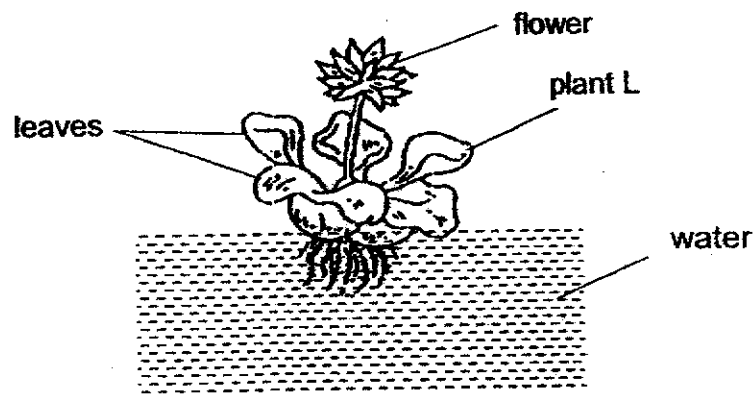
(     )



9. Study the classification chart below.



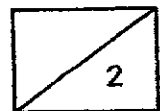
The diagram below shows plant L.



In which group, A, B, C or D, would plant L belong to?

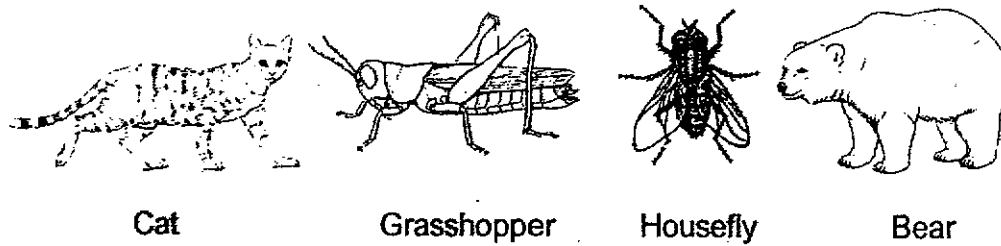
- (1) A
- (2) B
- (3) C
- (4) D

( )

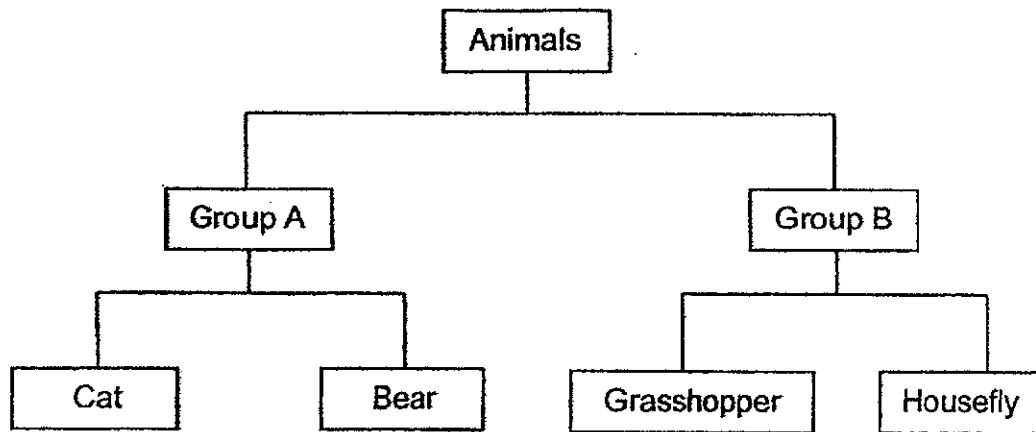


**Section B: Open-ended Questions (3 Questions – 12 marks)**

10. The diagram below shows different animals.



Kasim classified the animals into two groups.



- (a) Identify the group of animals in Groups A and B. [2]

Group A: \_\_\_\_\_

Group B: \_\_\_\_\_

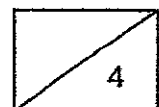
- (b) Which group, A or B, could Kasim classify a cow in? [1]

\_\_\_\_\_

- (c) State a difference in the way animals in Groups A and B reproduce. [1]

\_\_\_\_\_

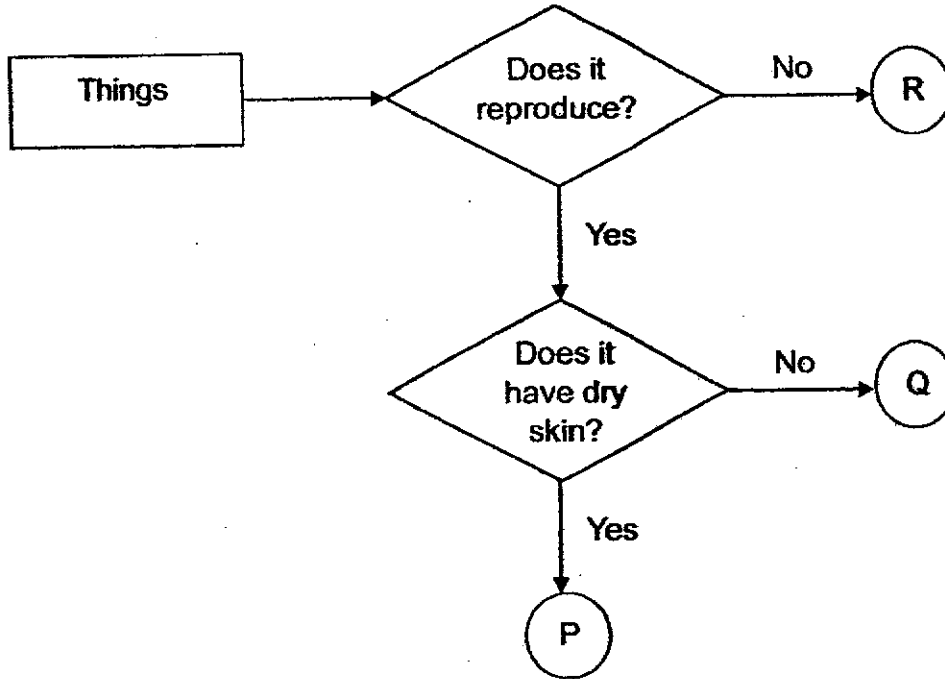
\_\_\_\_\_



11. At the zoo, Sheila listed what she saw in the box shown below.

- Amphibian
  - Reptile
  - Bench

She then drew a flow chart of what she saw at the zoo, as seen below.



(a) Based on the information in the flow chart, describe the characteristics of P. [2]

---

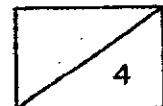


---

(b) Complete the following by writing P, Q or R in the correct spaces provided. [2]

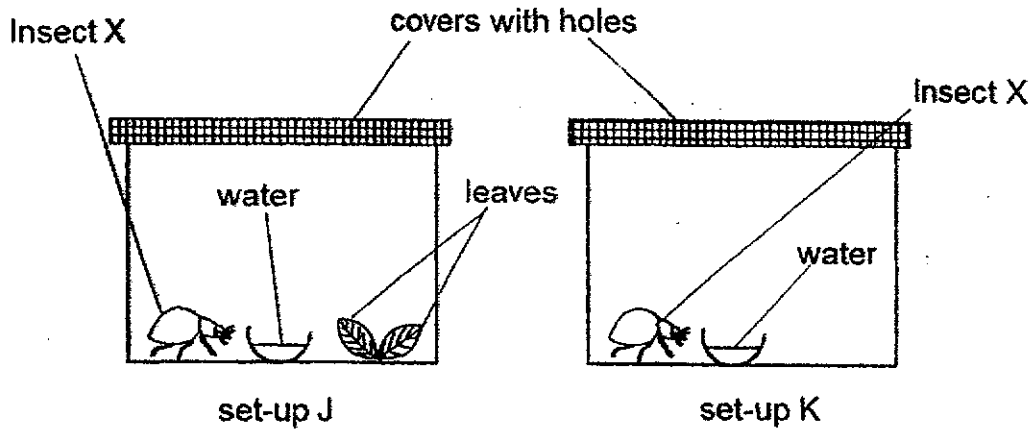
Bench: \_\_\_\_\_

Amphibian: \_\_\_\_\_





12. Peter kept two similar Insect X in set-ups J and K as shown in the diagram below.



(a) Based on the diagram, identify one similarity between set-up J and set-up K. (Do not mention Insect X). [1]

---

---

(b) Peter changed the cover in set-up K to a cover with no holes. What would happen to Insect X in set-up K after one week? [1]

---

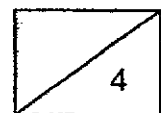
(c) Explain your answer in (b).

---

---

(d) After some time, insect X in set-up J laid some eggs in the container. Which characteristic of living things does this show? [1]

---





## ANSWER KEY

**LEVEL** : Primary 3  
**SCHOOL** : Red Swastika School  
**SUBJECT** : SCIENCE  
**TERM** : Class Test 1

### Class Test 1

Q1	4	Q2	3	Q3	4	Q4	2	Q5	3
Q6	1	Q7	3	Q8	1	Q9	2		

Q10	(a) Group A : Mammals Group B : Insects (b) Group A (c) Group A reproduce by giving birth to their young alive while B reproduce by laying eggs.
Q11	(a) P reproduce and have dry skin. (b) Bench : R Amphibian : Q
Q12	(a) Both set up J and K have a bowl of water. (b) Insect X will die earlier. (c) There is no air in set up K. (d) This shows living things reproduce.

1  
END

