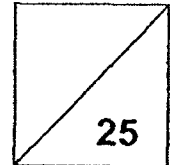




HENRY PARK PRIMARY SCHOOL
2018 TERM REVIEW
SCIENCE
PRIMARY 3



Duration of Paper: 40 min

Name: _____ ()

Class: Primary 3 _____

Parent's Signature: _____

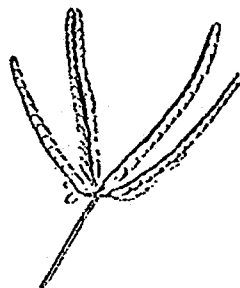
Section A: Multiple-Choice Questions (16 marks)

For each question from 1 to 8, four options are given. One of them is the correct answer. Make your choice (1, 2, 3 or 4). Write the correct answer (1, 2, 3 or 4) in the brackets provided.

1. June saw a mimosa plant and touched the mimosa leaves with her finger. The leaves closed immediately.



Open mimosa leaves



Closed mimosa leaves

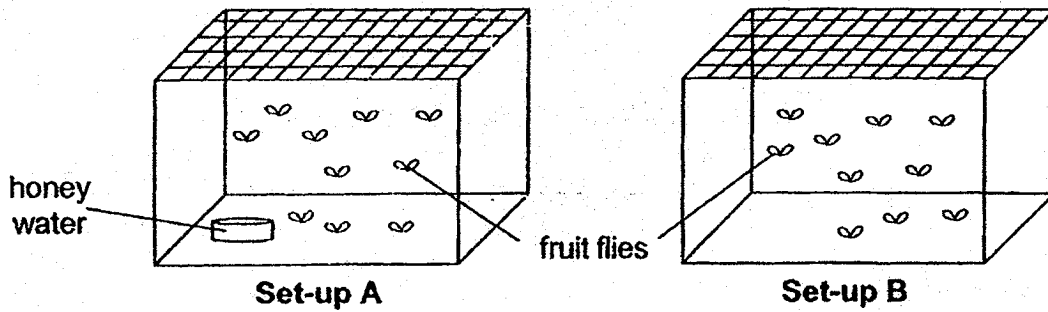
What could be the most likely reason?

- (1) Living things grow.
- (2) Living things reproduce.
- (3) Living things can respond to changes.
- (4) Living things need air, food and water.

()



2. Megan conducted the experiment as shown in the diagram below.



She observed the number of fruit flies and recorded the number of fruit flies once every 2 days in the table below.

Day	Set-up A	Set-up B
0	10	10
2	9	8
4	7	5
6	5	3
8	4	0

Based on the results above, which of the following statements is/are correct?

- (A) Living things will die.
- (B) Living things will reproduce.
- (C) Living things need food to survive.

- (1) A and B only
- (2) A and C only
- (3) B and C only
- (4) A, B and C

()



3. The diagram below shows a plant growing in the garden.

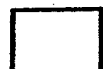


Which of the following statement(s) is/are correct observations of the plant?

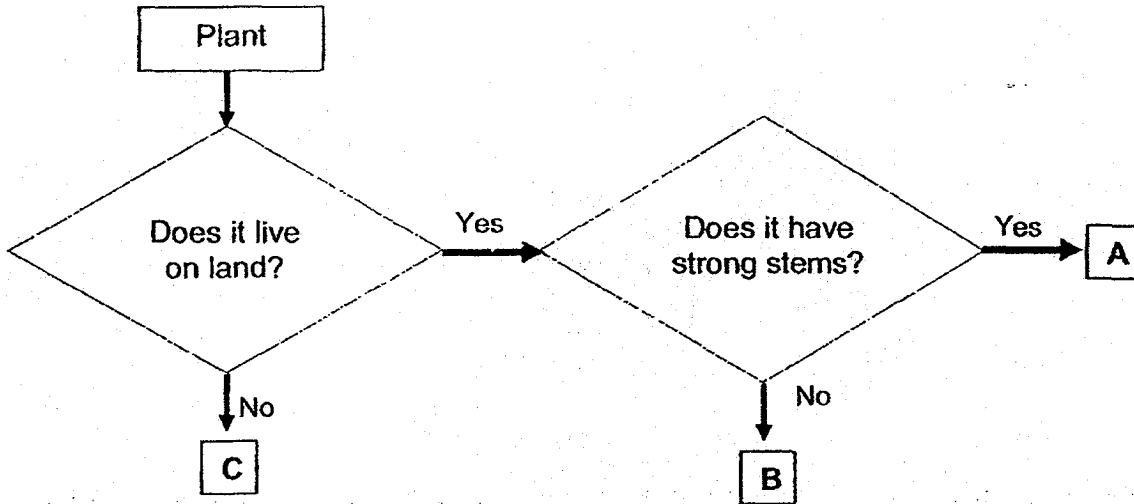
- (A) The plant lives in water.
- (B) The plant reproduces by spores.
- (C) The plant has reached adult stage.

- (1) A only
- (2) C only
- (3) A and C only
- (4) A and B only

()

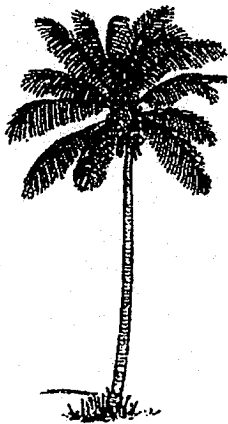


4. The flow chart below shows the characteristics of plants A, B and C.



Which one of the following is Plant B most likely to be?

(1)



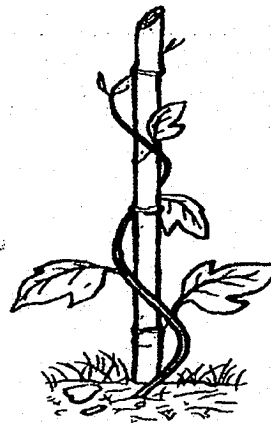
(2)



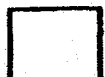
(3)



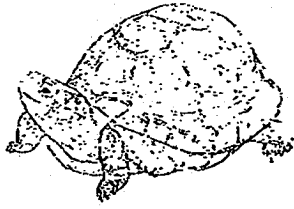
(4)



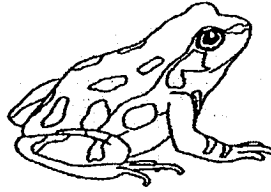
()



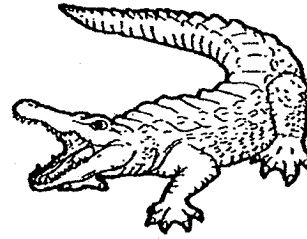
5. Observe the six animals below carefully.



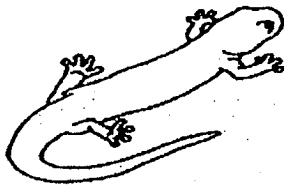
Tortoise



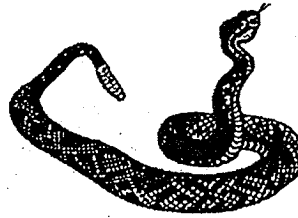
Frog



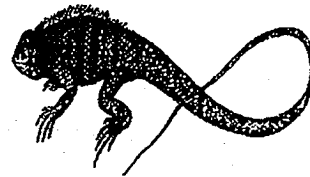
Crocodile



Salamander

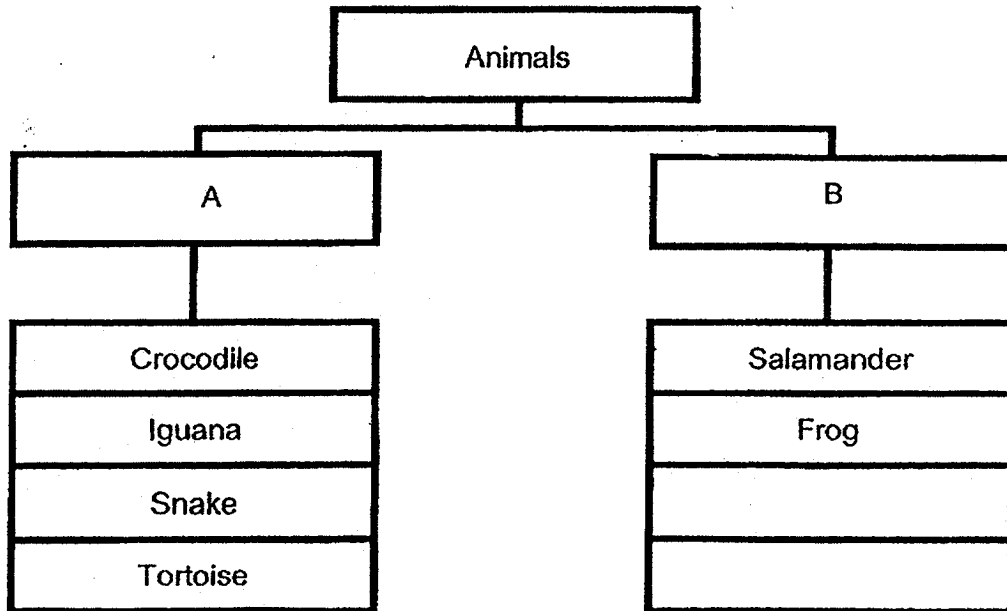


Snake



Iguana

The six animals are classified in the chart below.

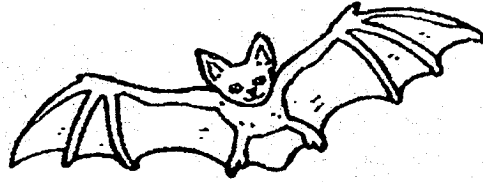
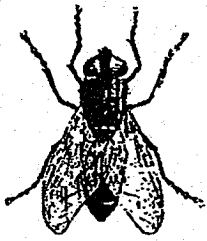


Which of the followings are suitable headings for Groups A and B in the classification chart above?

	A	B
(1)	Have wings	Have no wings
(2)	Have dry skin with scales	Have moist skin
(3)	Reproduce by laying eggs	Reproduce by giving birth
(4)	Have feathers as outer covering	Have scales as outer covering

()

6. Observe the animals shown below.



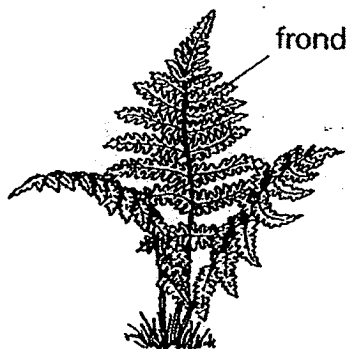
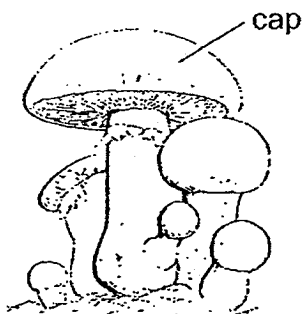
In which way are the animals similar to each other?

- (1) They have wings.
- (2) They have six legs.
- (3) They reproduce by laying eggs.
- (4) They have feathers as outer coverings.

()

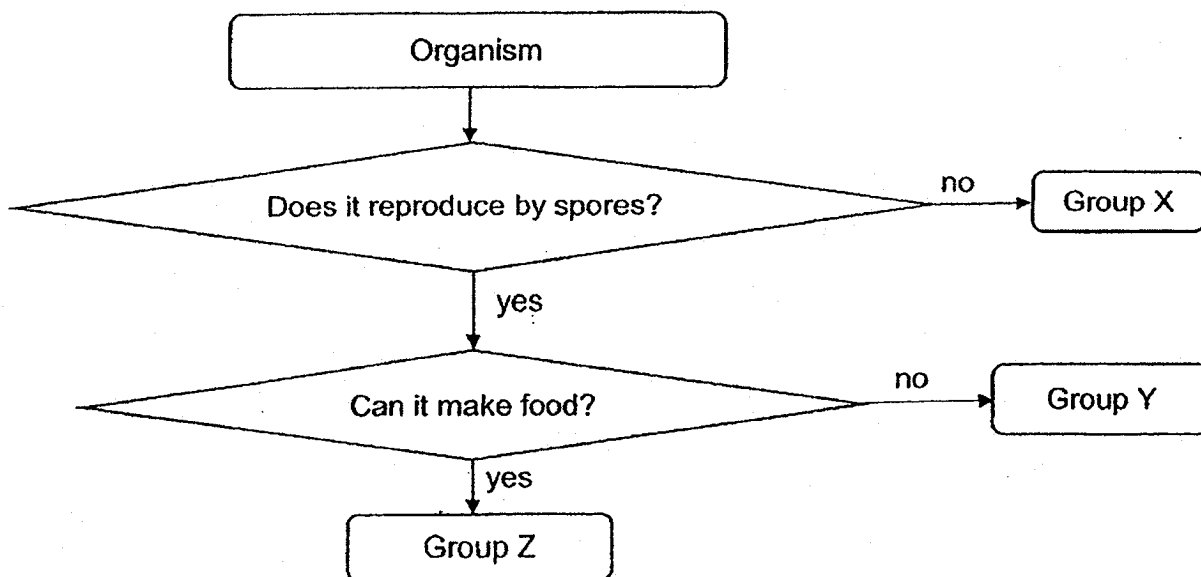


7. The diagram below shows organism A and B.



Organism A	Organism B
<ul style="list-style-type: none"> • Produces powdery substance under the cap that grows into a new organism A. 	<ul style="list-style-type: none"> • Produces powdery substance under the frond that grows into a new organism B.
<ul style="list-style-type: none"> • Brown in colour 	<ul style="list-style-type: none"> • Green in colour
<ul style="list-style-type: none"> • Grows on fallen tree and obtain food from dead matter. 	<ul style="list-style-type: none"> • Grows on living trees and can make its own food

Study the flow chart below.



Based on the information given, which of the following puts organism A and B into the correct group?

	Organism A	Organism B
(1)	Group X	Group Y
(2)	Group Y	Group Z
(3)	Group Z	Group Y
(4)	Group X	Group Z

8. The diagrams below show the different stages of germination.



Diagram A



Diagram B

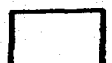


Diagram C

Which of the following shows the correct order how the seed germinate and grow into a young plant?

- (1) A → C → B
- (2) C → B → A
- (3) C → A → B
- (4) B → C → A

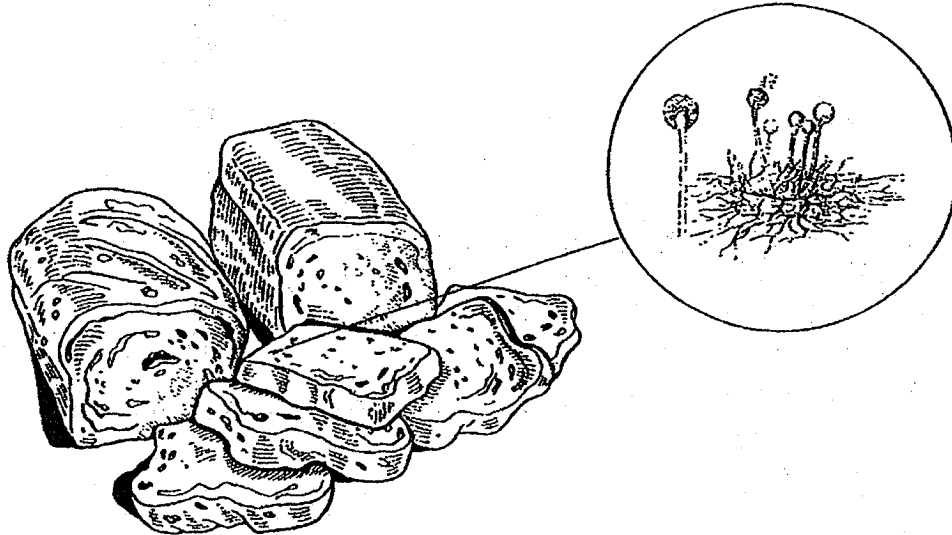
()



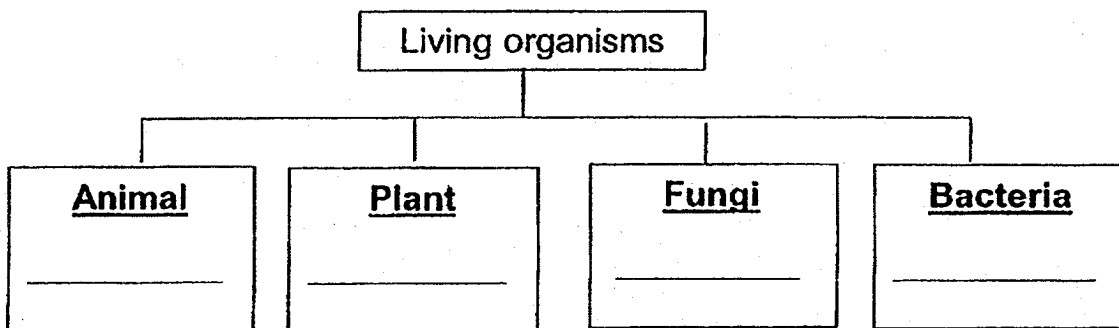
Section B: Short-answer questions (4 marks)

For each question, write your answers in the spaces given.

9. Some loaves of bread were left on the dining table. After ten days, dark patches of mould started to appear on the bread as shown in the diagram below .



- a) The classification chart below shows 4 groups of organisms. [1]
Write 'bread mould' in the correct box of the classification chart below.



- b) We need to use a _____ to look at bacteria. [1]

10. Circle **TRUE** or **FALSE** for each of the following statements.

[2]

(a) Insects have 2 pairs of legs and 2 body parts	TRUE	FALSE
(b) One of the common characteristics of a mammal is it feeds its young with milk.	TRUE	FALSE
(c) Penguin is a bird because it can swim.	TRUE	FALSE
(d) A frog is an amphibian as it has moist skin.	TRUE	FALSE

Section C: Open-ended questions (5 marks)

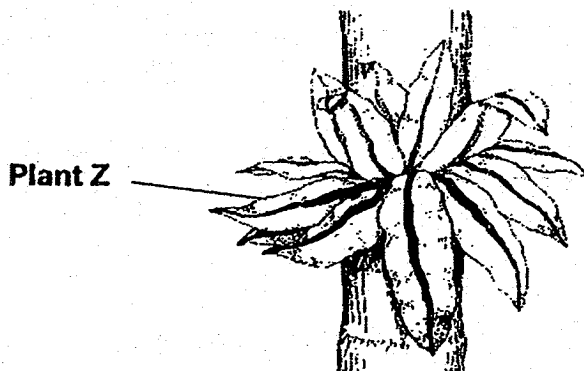
or each question from 11 to 12, write your answers in the spaces given.

11. The classification table below shows characteristics of 3 groups of plants, A, B and C.

Plants	Lives in water	Reproduce by seeds	Have weak stem
A	✓	✓	
B		✓	✓
C			✓

A tick (✓) indicates the characteristics of the plant.

Jane saw **plant Z** on her school fieldtrip. She did a drawing of the plant and made an observation in her Science journal as shown below.



Observation

There were brown powdery spots on the underside of the leaves of the plant.

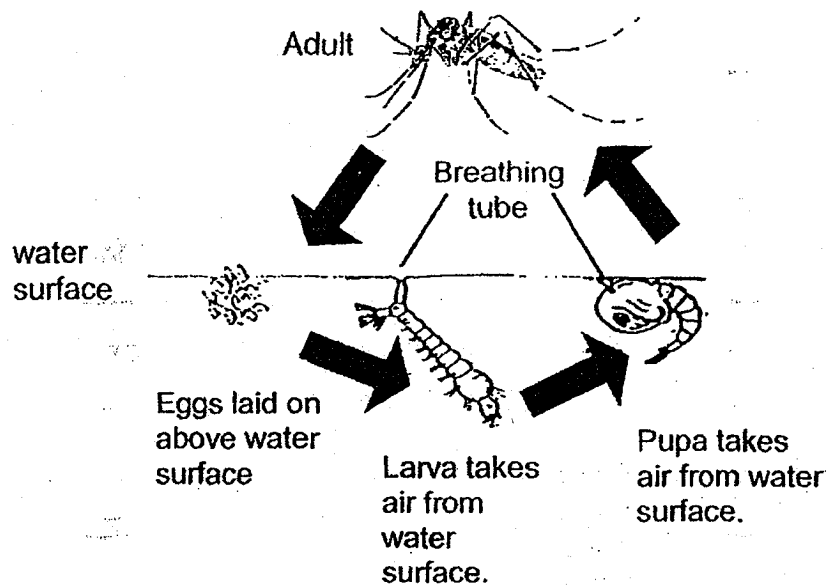
(a) In which group, A, B, or C, should Jane place plant Z?

[1]

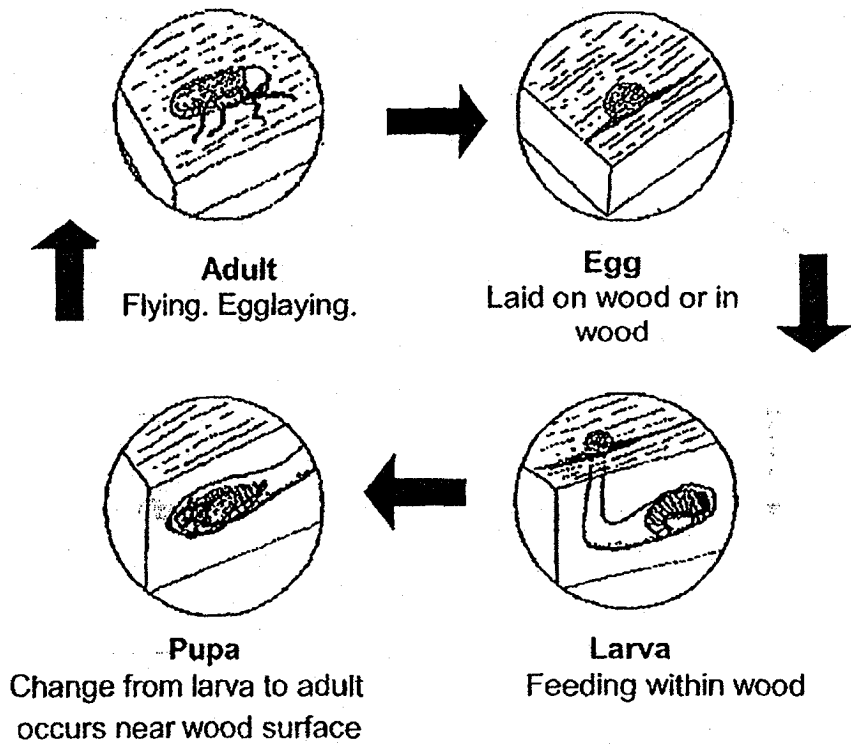
(b) State how the brown powdery spots that Jane observed help plant Z to survive.

[1]

12. The diagram below shows the life cycle of a mosquito



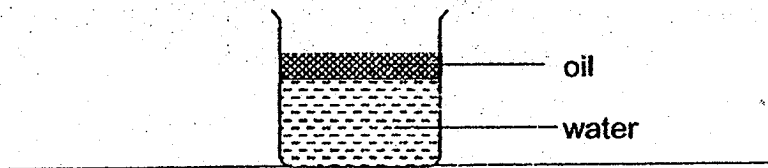
The diagram below shows the life cycle of a wood destroying beetle.



Answer the following questions on the next page.

- (a) State one difference between the egg, larva and pupa stages of the **mosquito** and **beetle**. [1]

- (b) When oil is poured into a beaker of water, it does not mix with water but form another layer above water, blocking air going into the water.



Another way of controlling the population of mosquito is to spread a layer of oil on the surface of stagnant water to kill the larva and pupa that live in the water. [2]

Do you agree? Explain why.

END OF PAPER



Term Review 2018 Correction Sheet

NAME: _____ ()

CLASS: PRI 3 _____

MCQ CA2

(1)	3	(3)	2	(5)	2	(7)	2
(2)	2	(4)	4	(6)	1	(8)	1

Qn.	Answers	Corrections
9(a)	FUNGI <u>Bread mould</u>	
(b)	Microscope	
10	False True False True	
11(a)	Group C	
(b)	The brown powdery spots are spore bags that store spores which help the plant to reproduce or grow into a new plant.	
12 (a)	Eggs, larva and pupa of the mosquito live in water but the eggs, larva and pupa of the beetle live in the wood/land.	

(b)	Yes. Larva breathe through breathing tube. Oil will block the breathing tubes of the larva and pupa, so they cannot take in take air and will die.	
-----	--	--