



**MARIS STELLA HIGH SCHOOL (PRIMARY)**

**SEMESTRAL ASSESSMENT 1**

**SCIENCE**

**10 MAY 2018**

**BOOKLET A**

NAME: \_\_\_\_\_ ( )

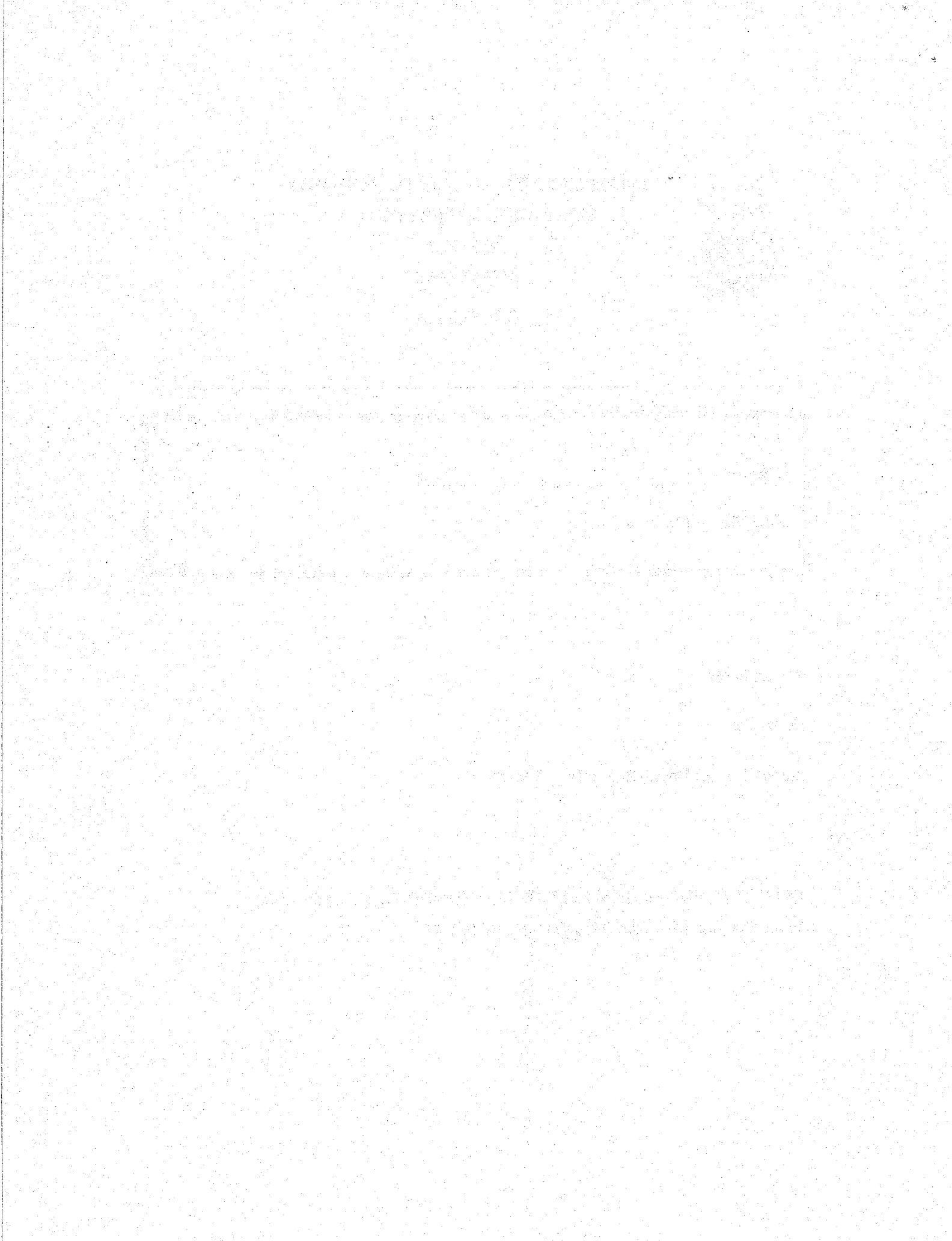
CLASS: Primary 3 ( )

15 questions

30 marks


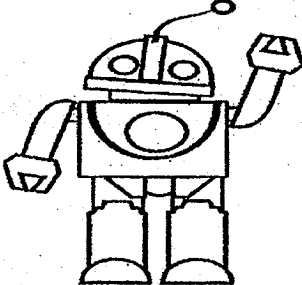
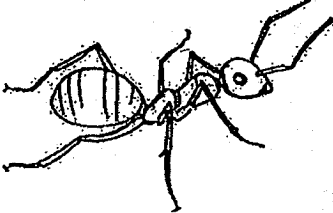
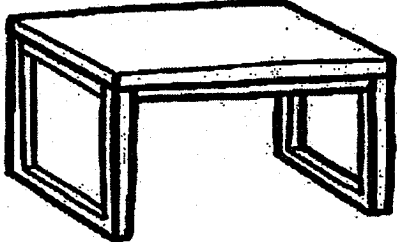
Total Time for Booklets A & B: 1 hour

**DO NOT OPEN THIS BOOKLET UNTIL YOU ARE TOLD TO DO SO.  
FOLLOW ALL INSTRUCTIONS CAREFULLY.**



For each question from 1 to 15, four options are given. One of them is the correct answer. Make your choice (1, 2, 3 or 4). Shade the correct oval (1, 2, 3 or 4) on the Optical Answer Sheet (OAS). (30 marks)

1 Study the classification table.

Group A	Group B
 <p data-bbox="469 913 549 944">Plant</p>	 <p data-bbox="1059 913 1139 944">Robot</p>
 <p data-bbox="458 1255 512 1286">Ant</p>	 <p data-bbox="1102 1270 1182 1301">Table</p>

Which one of the following is true about the things in groups A and B?

	Group A	Group B
(1)	Cannot grow	Can grow
(2)	Needs air	Does not need air
(3)	Does not need food	Needs food
(4)	Does not respond to change	Responds to change

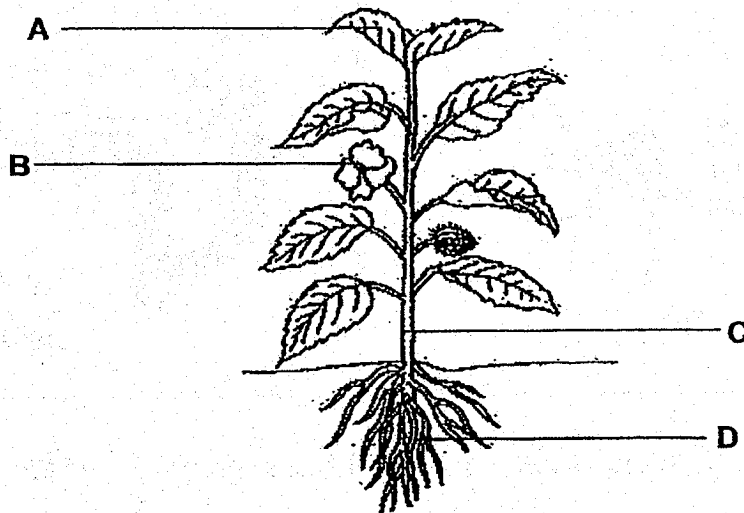
2 Study the following statements.

- A A millipede coils itself after being touched.
- B A baby cries after hearing the loud thunder.
- C A butterfly flies away when a cat moves towards it.

These statements show that living things \_\_\_\_\_.

- (1) grow
- (2) respond
- (3) reproduce
- (4) need air, food and water to survive

3 Study the diagram of the plant below.



Which part of the plant makes food?

- (1) A
- (2) B
- (3) C
- (4) D



- 6 The table below shows the characteristics of two groups of animals, X and Y. A tick (✓) indicates that the animals have the stated characteristic.

Characteristics	Group X	Group Y
Have moist skin		✓
Have scales	✓	
Live on land and in water		✓
Lay eggs	✓	✓

Which one of the following animal groups best represents X and Y?

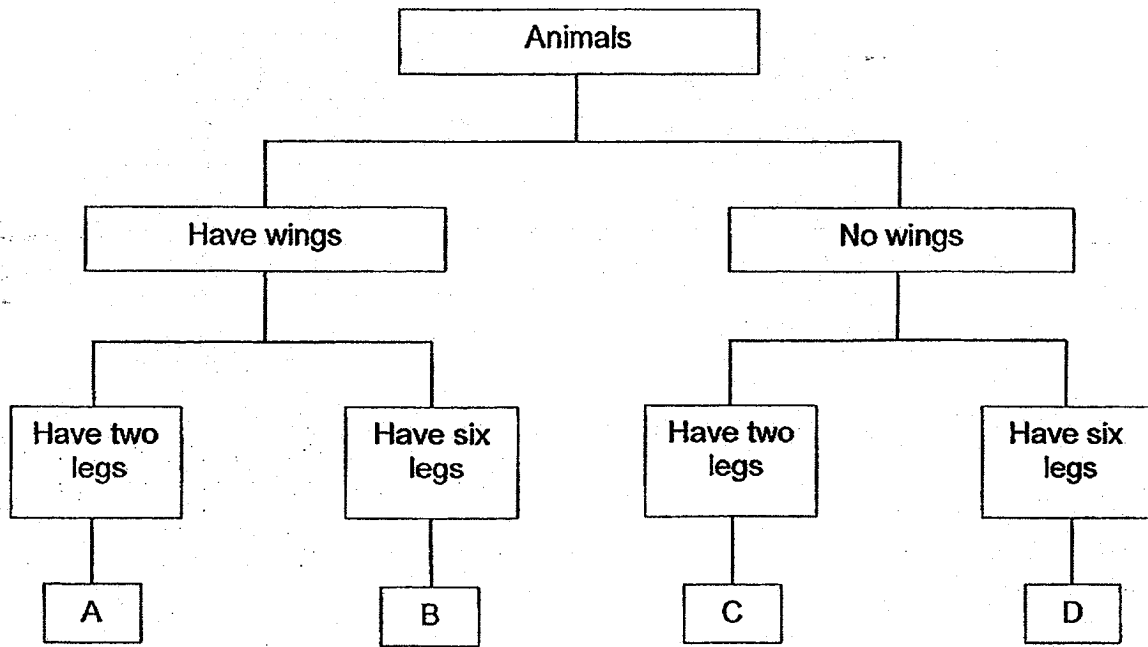
	Group X	Group Y
(1)	Fish	Mammals
(2)	Amphibians	Reptiles
(3)	Reptiles	Amphibians
(4)	Fish	Reptiles

- 7 Which of the following statement(s) about fish is/are true?

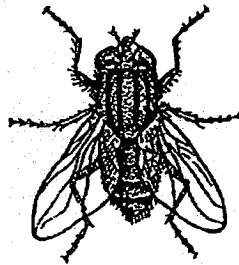
- A They lay eggs.
- B They breathe through their lungs.
- C They have scales as their outer covering.

- (1) A only
- (2) B only
- (3) A and C only
- (4) A, B and C

8 Study the classification chart below.



The picture below shows animal P.



Animal P

Which letter, A, B, C or D, represents Animal P?

- (1) A
- (2) B
- (3) C
- (4) D

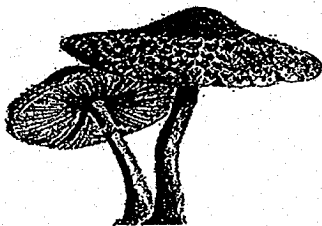
- 9 The table below shows the characteristics of living things A, B, C and D. A tick (✓) indicates that the living thing has the stated characteristic.

Characteristics	A	B	C	D
Bears flowers	✓			✓
Grows on land		✓	✓	✓
Reproduces from spores		✓	✓	
Makes its own food	✓		✓	✓

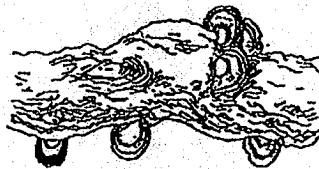
Which of the following is/are most likely non-flowering plant(s)?

- (1) A only
- (2) C only
- (3) B and C only
- (4) A and D only

- 10 The pictures below show toadstools and bracket fungi.



**Toadstool**



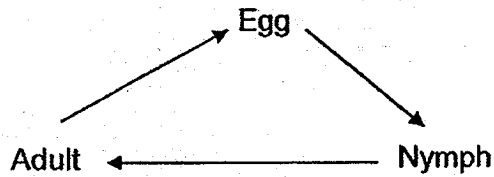
**Bracket fungus**

How are the toadstool and bracket fungus similar?

- A They reproduce by spores.
  - B They are non-flowering plants.
  - C They can make their own food.
  - D They need air, food and water to survive.
- (1) A and D only
  - (2) B and C only
  - (3) A, B and D only
  - (4) A, B, C and D



11 The diagram below shows the life cycle of Animal W.

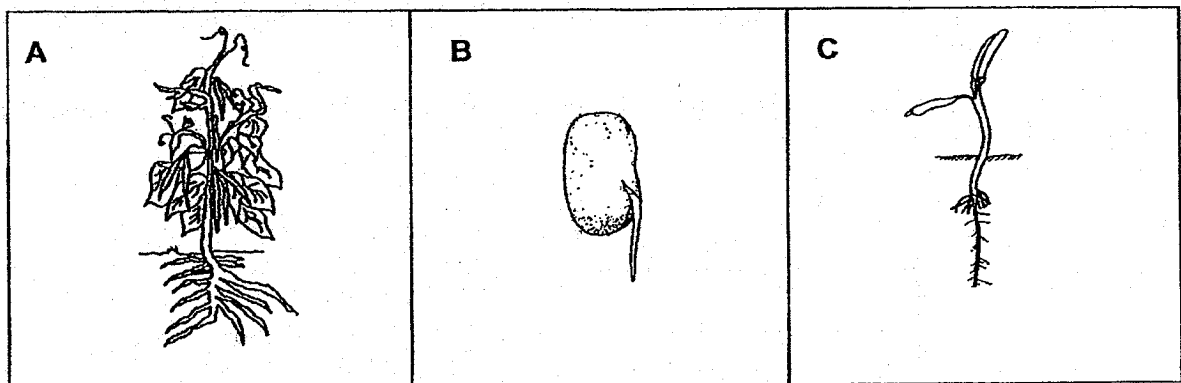


**Life cycle of Animal W**

Which of the following could Animal W be?

- (1) Frog
- (2) Butterfly
- (3) Chicken
- (4) Cockroach

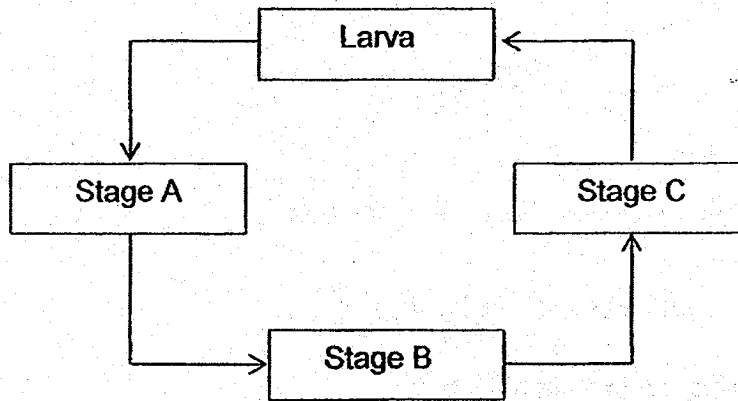
12 The diagram below shows the different stages of the life cycle of a plant.



Which of the following shows the correct sequence in the life cycle of a plant?

- (1) A → C → B
- (2) B → A → C
- (3) C → A → B
- (4) C → B → A

13 The diagram below shows the life cycle of an insect.



Which is/are the stage(s) that the insect do(es) not eat?

- (1) A only
- (2) C only
- (3) A and C only
- (4) A, B and C

14 Ben placed five animal P in a tank. He ensured that the animals had enough air, food and water in the tank.

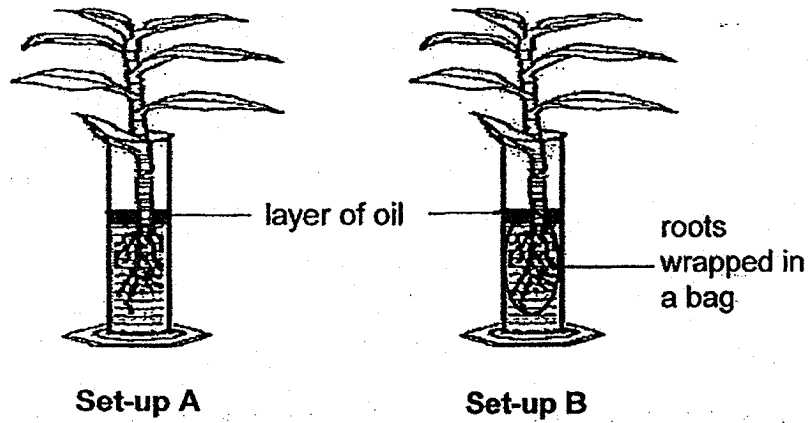
Ben counted the number of animal P in the tank over 4 months. The table below shows his observations.

Month	Number of animal P
1	5
2	7
3	10
4	15

Which of the following statements about living things caused the observations made by Ben?

- (1) Living things grow.
- (2) Living things reproduce.
- (3) Living things respond to changes around them.
- (4) Living things need air, food and water to survive.

15 John prepared the set-ups as shown below and left them in the garden for one week.



He measured the volume of the water at the start and end of the experiment.

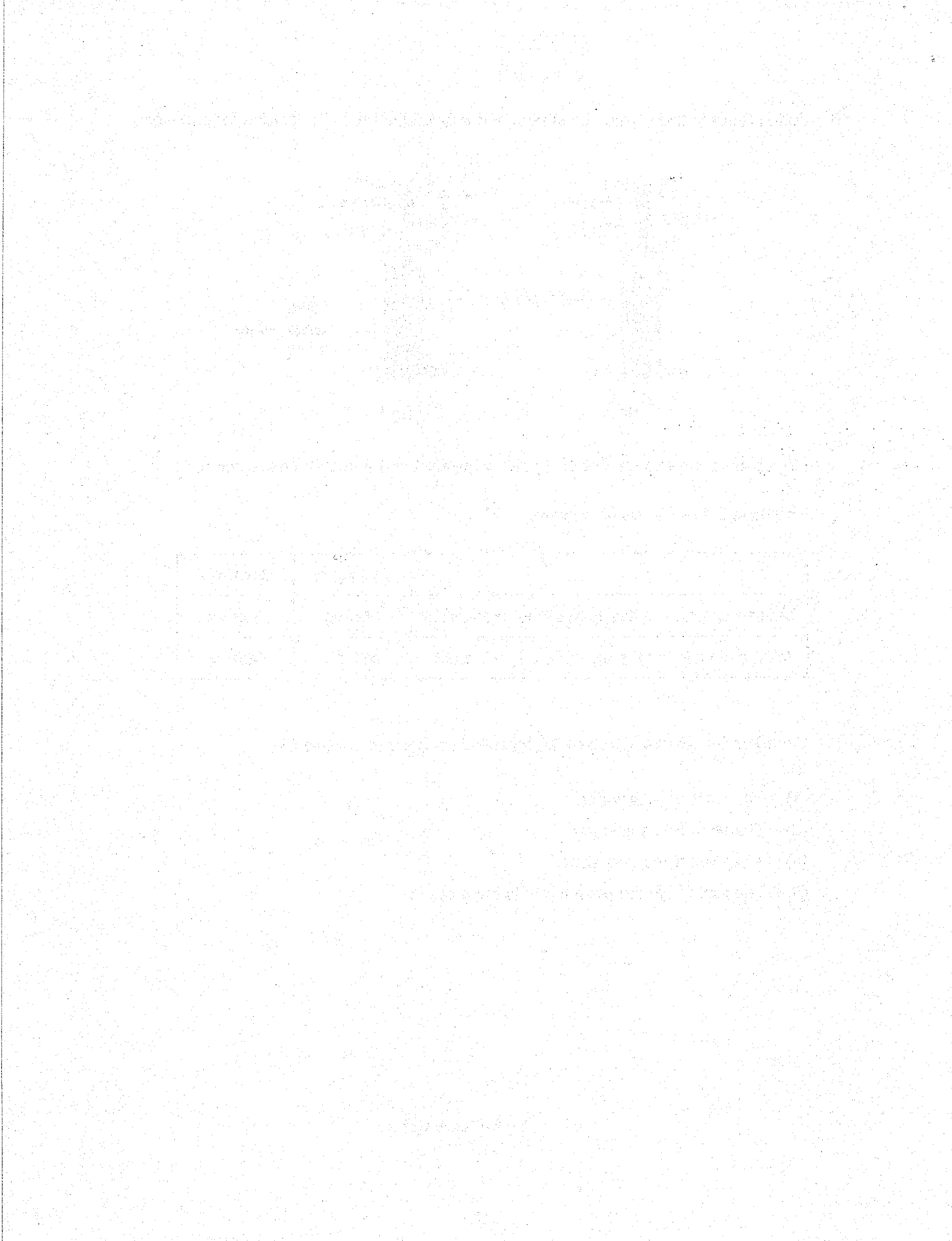
The table below shows his results.

	Set-up A	Set-up B
Volume of water at the <u>start</u> of the experiment	500 ml	500 ml
Volume of water at the <u>end</u> of the experiment	430 ml	500 ml

Based on his results, which of the following statements is correct?

- (1) The roots take in water.
- (2) The stem takes in water.
- (3) The stem transports water.
- (4) The roots hold the plant firmly to the ground.

End of Booklet A





MARIS STELLA HIGH SCHOOL (PRIMARY)

SEMESTRAL ASSESSMENT 1

SCIENCE

10 MAY 2018

BOOKLET B

NAME: \_\_\_\_\_ ( )

CLASS: Primary 3 ( )

6 questions

20 marks

Total Time for Booklets A & B: 1 hour

DO NOT OPEN THIS BOOKLET UNTIL YOU ARE TOLD TO DO SO.  
FOLLOW ALL INSTRUCTIONS CAREFULLY.

BOOKLET A: \_\_\_\_\_ / 30

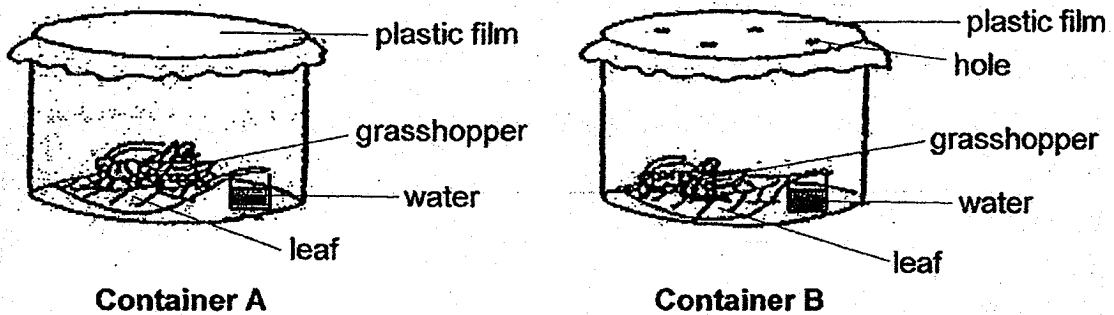
BOOKLET B: \_\_\_\_\_ / 20

TOTAL: \_\_\_\_\_ / 50

PARENT'S SIGNATURE: \_\_\_\_\_

For questions 16 to 21, write your answers in this booklet. The number of marks available is shown in brackets [ ] at the end of each question or part question. (20 marks)

- 16 Joshua placed two grasshoppers in two separate containers, A and B, as shown in the diagrams below. The two containers are sealed with a plastic film. The plastic film on container B has holes but the one on container A does not have holes.



- (a) In which container, A or B, would the grasshopper survive longer? [1]

---

- (b) Give a reason for your answer in (a). [1]

---

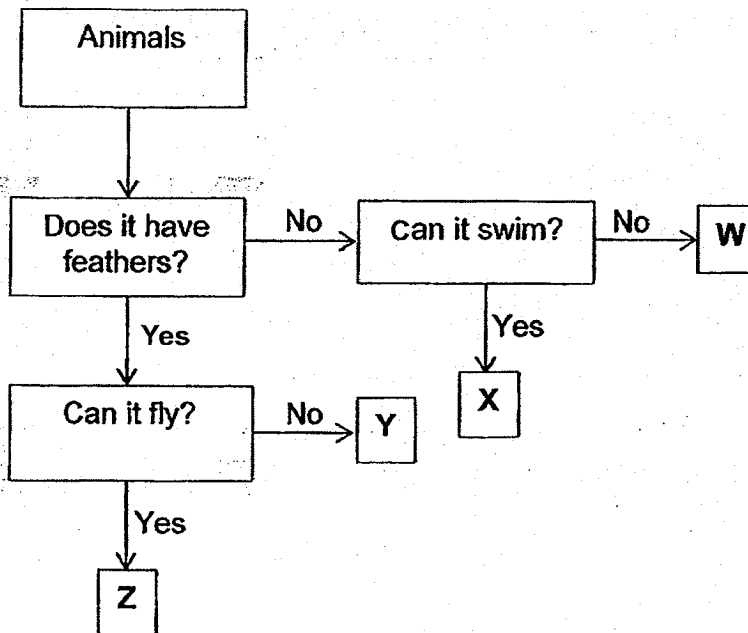
---

- (c) What characteristic of living things is shown in this experiment? [1]

---

---

17 Study the flowchart below.



(a) Describe animal X.

[2]

---

---

(b) State one similarity between animals Y and Z.

[1]

---

---

(c) State one difference between animals W and Y.

[1]

---

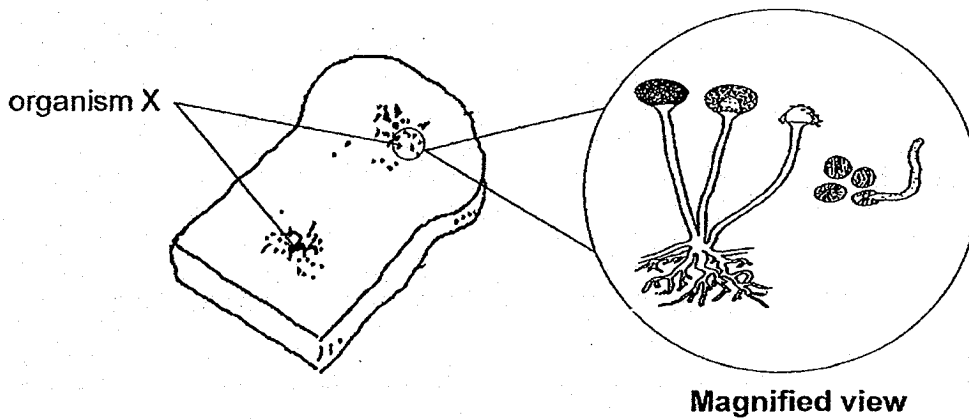
---

18 Study the following statements in the table shown below.

(a) Put a tick (✓) in the appropriate column to indicate if the statement is True or False. [2]

	Statements	True	False
(i)	All bacteria are harmful to humans.		
(ii)	All fungi can be seen by the naked eye.		
(iii)	Bacteria respond to changes around them.		
(iv)	Fungi reproduce by spores.		

(b) Ethan left a piece of bread on the table. After a week, he observed that organism X grew on the bread.

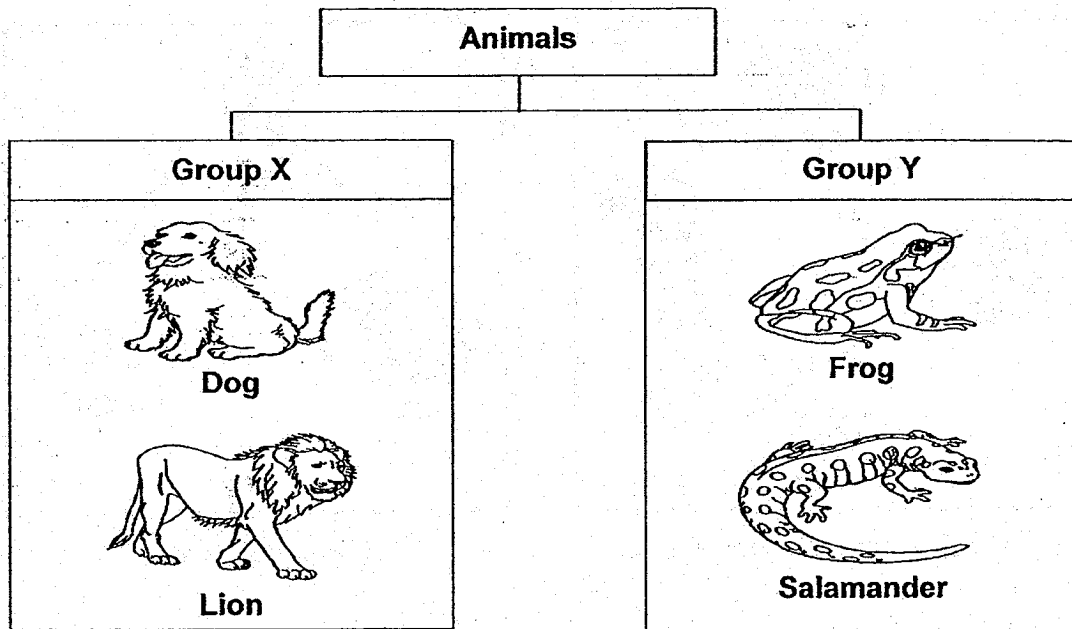


(i) What is organism X? [1]

(ii) Based on Ethan's experiment, where did organism X get its food? [1]



19 Study the classification chart below.



(a) State the correct animal groups that X and Y represent. [1]

Group X: \_\_\_\_\_

Group Y: \_\_\_\_\_

(b) State the difference in the outer-covering of the animals in groups X and Y. [1]

---

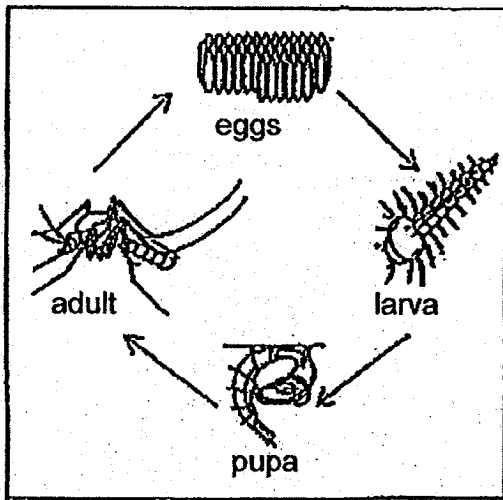
---

(c) State the difference in the method of reproduction of the animals in groups X and Y. [1]

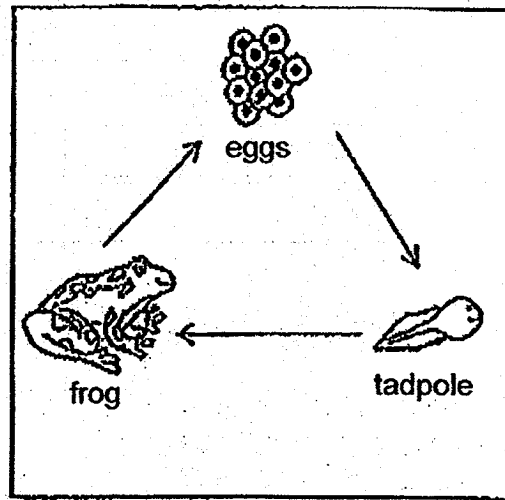
---

---

20 The diagrams below show the life cycles of a mosquito and a frog.



Life cycle of mosquito



Life cycle of frog

(a) State one similarity between the two life cycles. [1]

---



---

(b) State one difference between the two life cycles. [1]

---



---

(c) Which other animal has a similar life cycle as the mosquito? [1]  
Put a tick (✓) to indicate your answer.

Butterfly	
Cockroach	
Grasshopper	

	3
--	---

- 21 The table below shows the characteristics of three animals, A, B and C.  
A tick (✓) indicates that the animal has the stated characteristic.

Animal	Has a three-stage life cycle	Young resembles its adult	Has six legs
A	✓	✓	✓
B			✓
C	✓		

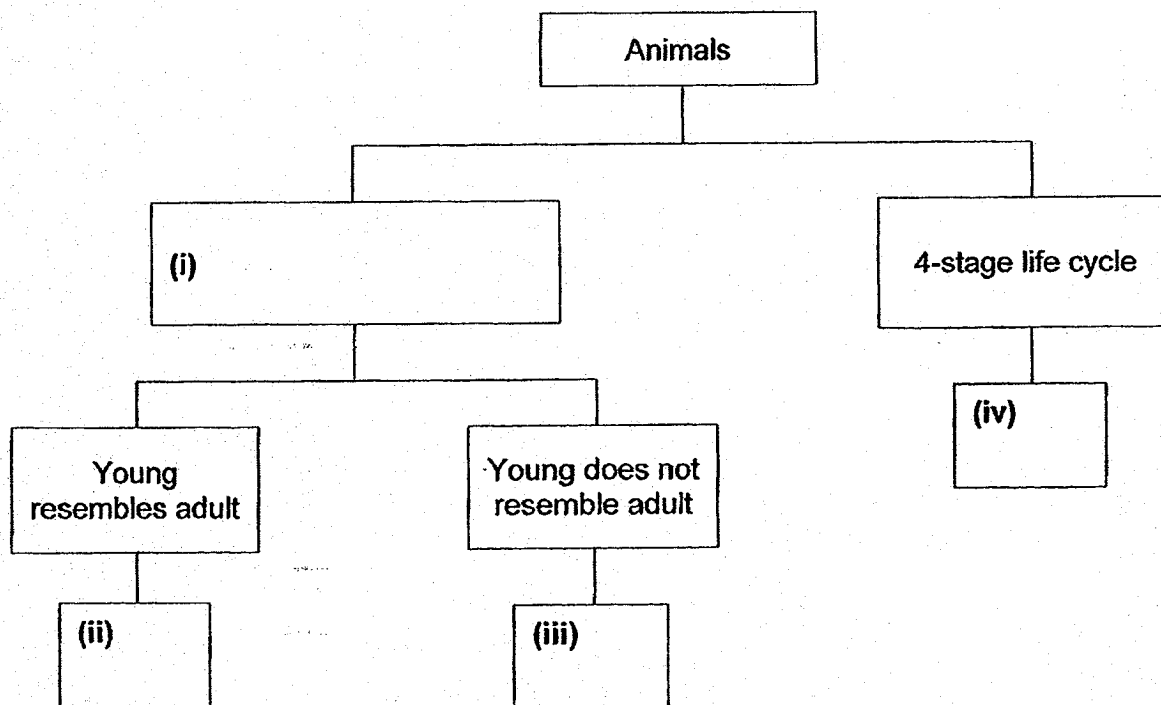
- (a) Describe animal B. [1]

---

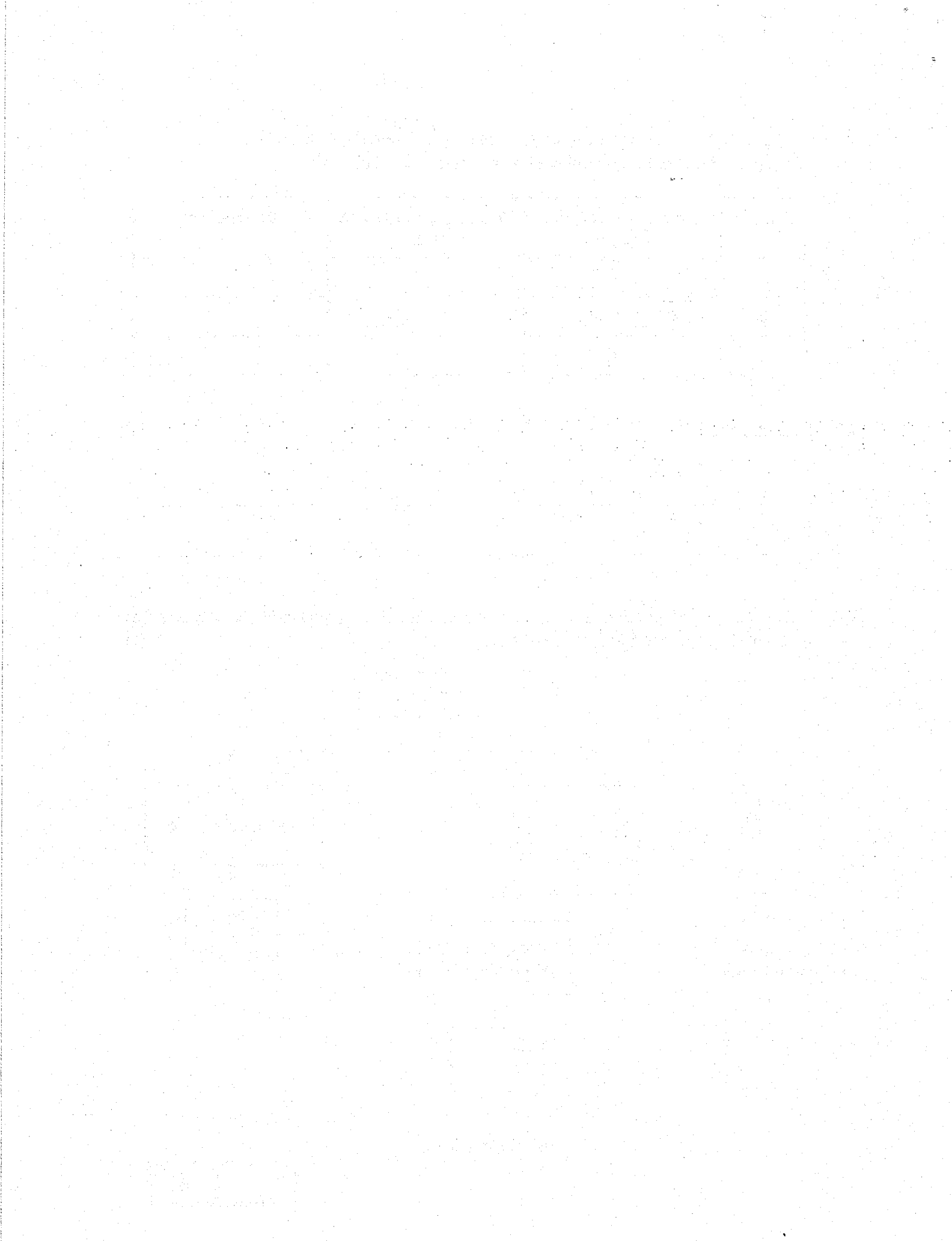


---

- (b) Based on the information above, write down the sub-heading and classify animals A, B and C in the classification chart below. [2]



End of Booklet B



**EXAM PAPER 2018 (P3)**

**SCHOOL : MARIS STELLA**

**SUBJECT : SCIENCE**

**TERM : SA1**

Q1	Q2	Q3	Q4	Q5	Q6	Q7	Q8	Q9	Q10
2	2	1	2	3	3	3	2	2	1
Q11	Q12	Q13	Q14	Q15					
4	3	3	2	1					

**Q16) a) Container B**

**b) Container A does not have enough air as it does not have holes but Container B has holes so it has enough air.**

**c) Living things need air to survive.**

**Q17) a) Animal X does not have feathers and it can swim.**

**b) Both animals have feathers.**

**c) Y has feathers but W has no feathers.**

**Q18) a) (i) False**

**(ii) False**

**(iii) True**

**(iv) True**

**b) i) mould**

**ii) Organism X got food from the bread.**

**Q19) a) Group X : mammals**

**Group Y : amphibians**

**b) Group X has hair but Group Y has moist skin.**

**c) Group X give birth to their young alive but Group Y lay eggs.**

**Q20) a) Both life cycles have an egg stage**

**b) The life cycle of the frog has three stages but the mosquito's life cycle has four stage.**

**c) Butterfly**

**Q21) a) B has six legs, does not have a three stage life cycle and its young does not resembles its adult.**

**b) i) 3-stage life cycle**

**ii) A**

**iii) C**

**iv) B**