

Name: \_\_\_\_\_ Register Number: \_\_\_\_\_ Class: \_\_\_\_\_



南橋中學

For Marker's Use

**NAN CHIAU HIGH SCHOOL**  
**PRELIMINARY EXAMINATION 2025**  
**SECONDARY FOUR EXPRESS**

**Geography**

2279/01

Paper 1

26 August 2025, Tuesday

1 hour 45 minutes

Candidates answer on the Question Paper.

**READ THESE INSTRUCTIONS FIRST**

Write your name, class and register number on all the work you hand in.

Write in dark blue or black pen.

You may use an HB pencil for any diagrams or graphs.

Do not use staples, paper clips, glue or correction fluid.

Answer **all** questions.

The Insert contains additional resources referred to in the questions.

The number of marks is given in brackets [ ] at the end of each question or part question.

The total marks for this paper is 50.

This paper consists of 15 printed pages including the cover page.

Answer **all** questions.

**1 Cluster 1: Geography in Everyday Life**

A group of students were interested to study about tourism in Singapore since it is an important industry that contributes significantly to the country's GDP. As part of their fieldwork, they decided to investigate the patterns of tourism in Singapore.

(a) The students collected some information about the different ways that the tourist industry earned money.

(i) Suggest two sources where the information shown in Fig. 1.1 (Insert) could be found.

1. ....

2. ....

[2]

(ii) Which sector of the tourist industry shown in Fig. 1.1 (Insert) contributed the least amount of money?

Sector: .....

[1]



- (b) (ii) Using Table 1.1, plot the total number of tourists coming from Africa and Asia on Fig. 1.2. [2]

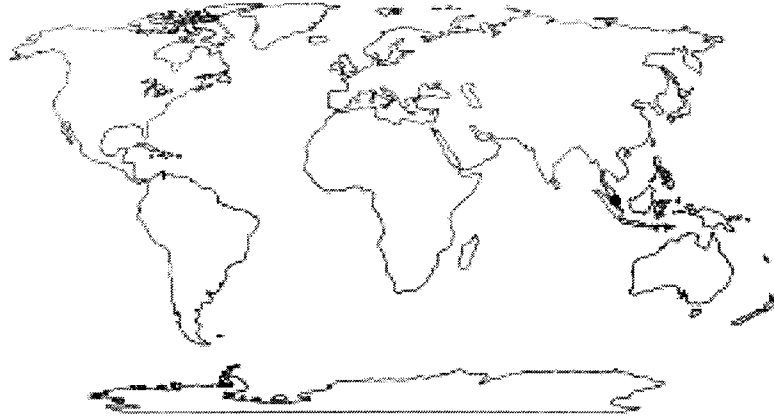
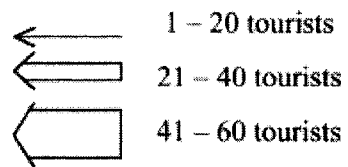


Fig. 1.2

**Key**

- Singapore



(b) (iii) Based on the findings in Table 1.1, what conclusion could students make about the hypothesis? Support your answer with evidence from Table 1.1.

.....  
.....  
.....  
.....  
.....  
.....  
.....  
.....[3]

(iv) Evaluate the reliability of the data collection method used in this investigation.

.....  
.....  
.....  
.....  
.....  
.....  
.....  
.....  
.....  
.....[4]





tourism.

.....  
.....  
.....  
.....  
.....[2]

- (d) Study Fig. 2.1 (Insert), which shows the international and domestic tourism trends between 2019 and 2024.

Using Fig. 2.1, compare the trends in international and domestic travel between 2019 and 2024.

.....  
.....  
.....  
.....  
.....  
.....  
.....  
.....  
.....  
.....[4]

[Total: 15]

**3 Cluster 3: Climate**

- (a) Explain how large-scale volcanic eruptions influence earth's temperature.

.....  
.....

.....  
.....  
.....  
.....  
.....[3]

(b) Study Fig. 3.1(Insert), which shows a map of Asia’s sinking cities by 2030.

Using Fig. 3.1, describe the risk and impact to Asia as a result of rising sea levels and flooding.

.....  
.....  
.....  
.....  
.....  
.....  
.....  
.....[3]

(c) Study Fig. 3.2(Insert), which shows clean energy sources.

‘Using clean energy sources is more effective than changing consumption patterns when building community resilience to climate change.’

With reference to Fig. 3.2, to what extent do you agree with this statement? Explain your answer.





**Additional Pages**

If you use the following lined pages to complete the answer(s) to any question(s), the question number(s) must be clearly shown.

.....





Figure 2.1	©	<a href="https://business.nycgo.com/press-and-media/press-releases/articles/post/nyc-travel-trend-outlook-2020-2024/">https://business.nycgo.com/press-and-media/press-releases/articles/post/nyc-travel-trend-outlook-2020-2024/</a>
Figure 3.1	©	<a href="https://www.statista.com/chart/25152/risk-of-rising-sea-levels-flooding-in-asia/">https://www.statista.com/chart/25152/risk-of-rising-sea-levels-flooding-in-asia/</a>
Figure 3.2	©	<a href="https://www.ecoredux.com/what-is-clean-energy">https://www.ecoredux.com/what-is-clean-energy</a>



Name: \_\_\_\_\_ Register Number: \_\_\_\_\_ Class: \_\_\_\_\_



南橋中學

**NAN CHIAU HIGH SCHOOL**  
**PRELIMINARY EXAMINATION 2025**  
**SECONDARY FOUR EXPRESS**

For Marker's Use

**Geography**

**2279/01**

Paper 1

**26 August 2025, Tuesday**

INSERT

**1 hour 45 minutes**

Candidates answer on the Question Paper.

**READ THESE INSTRUCTIONS FIRST**

This Insert contains additional resources referred to in the questions.

-----  
 This document consists of **6** printed pages including the cover page.

Fig. 1.1 for Question 1

Percentage share of tourist income

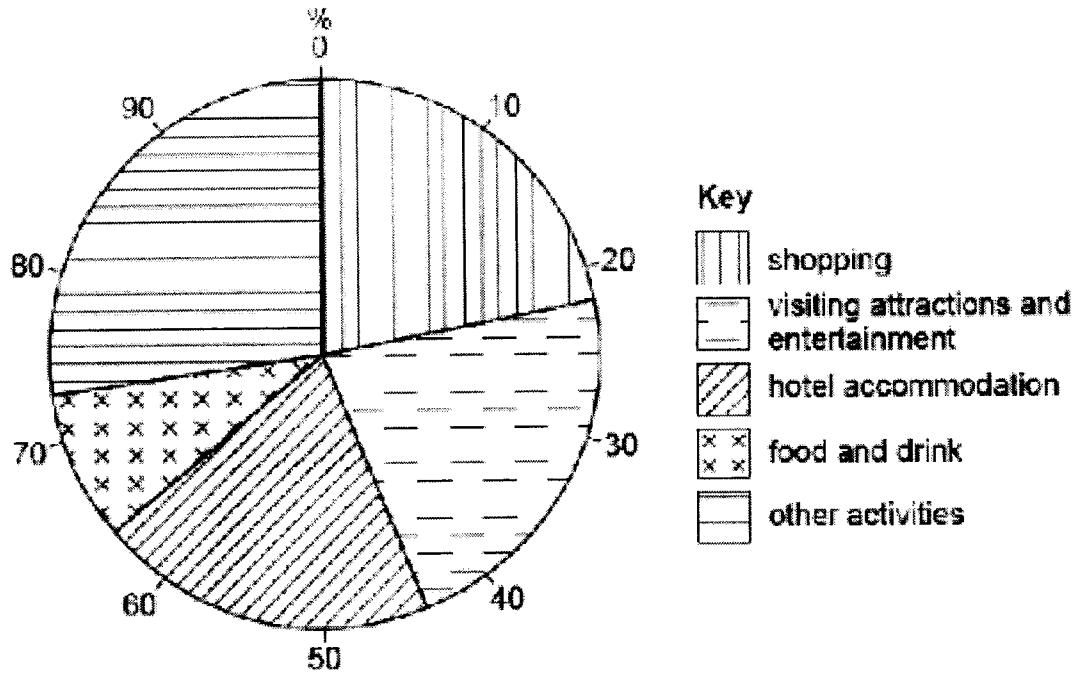
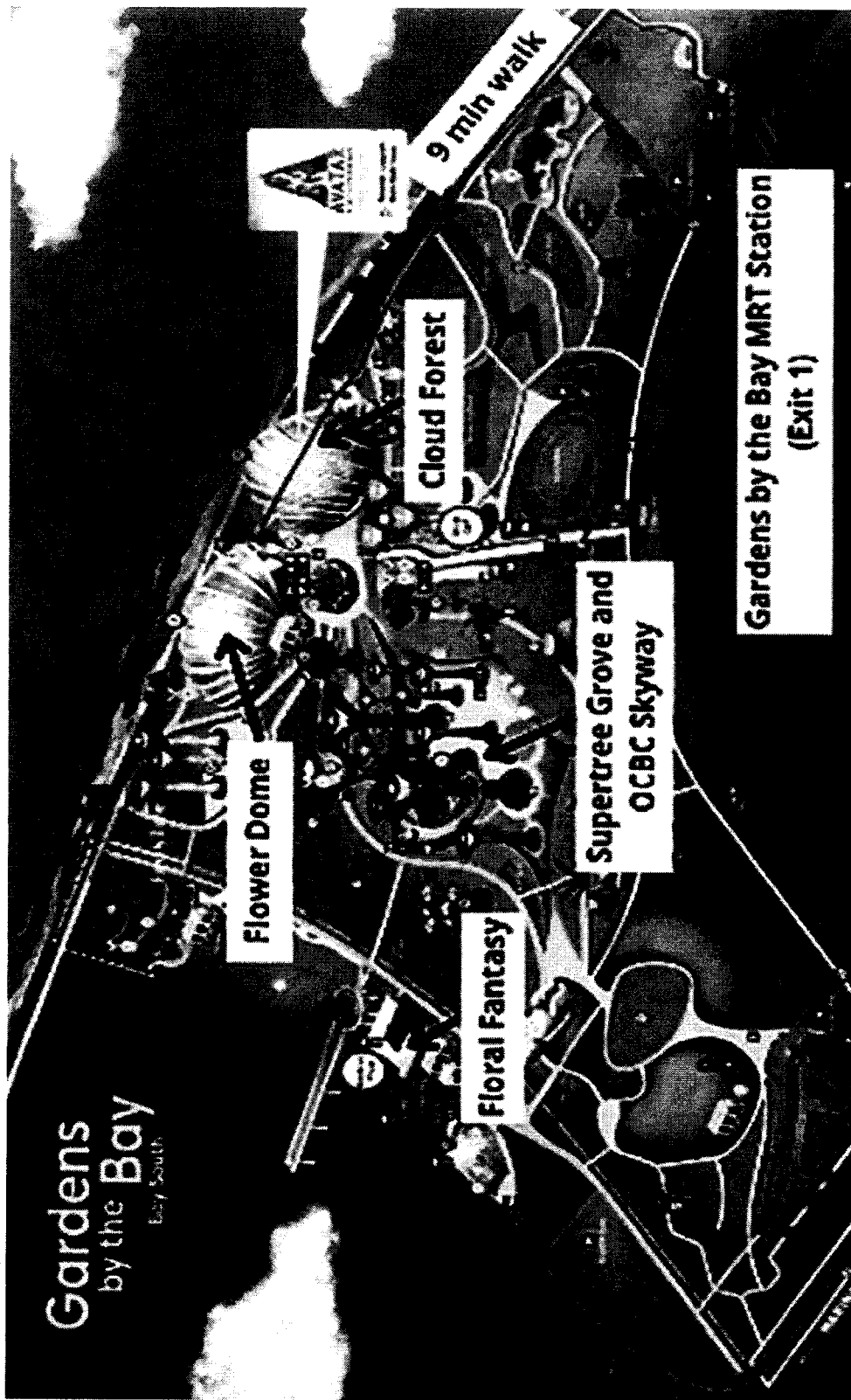


Fig. 1.2 for Question 1

Map of Gardens by the Bay





**Fig. 2.1 for Question 2**  
**Travel Trends (2019 – 2024)**

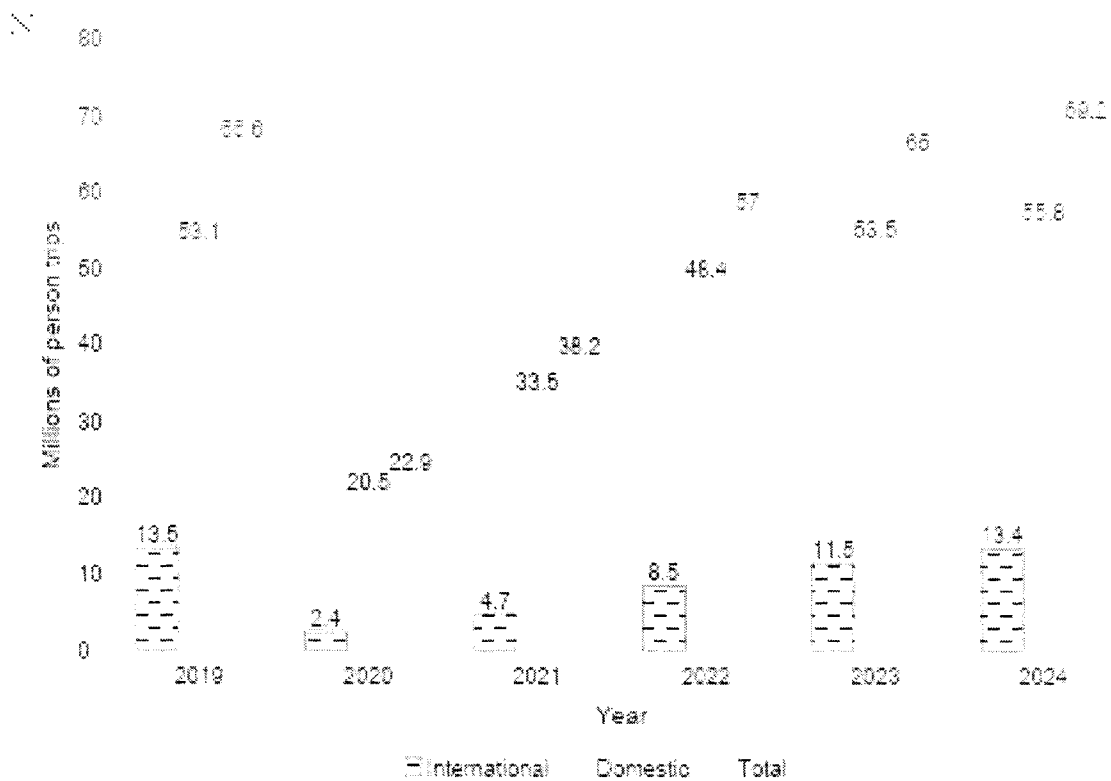
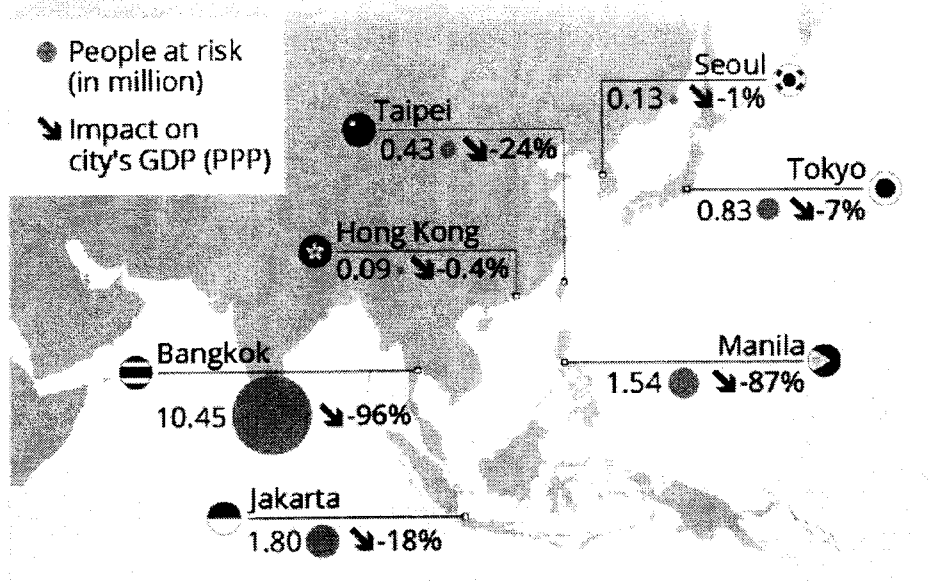


Fig. 3.1 for Question 3

Asia's Sinking Cities

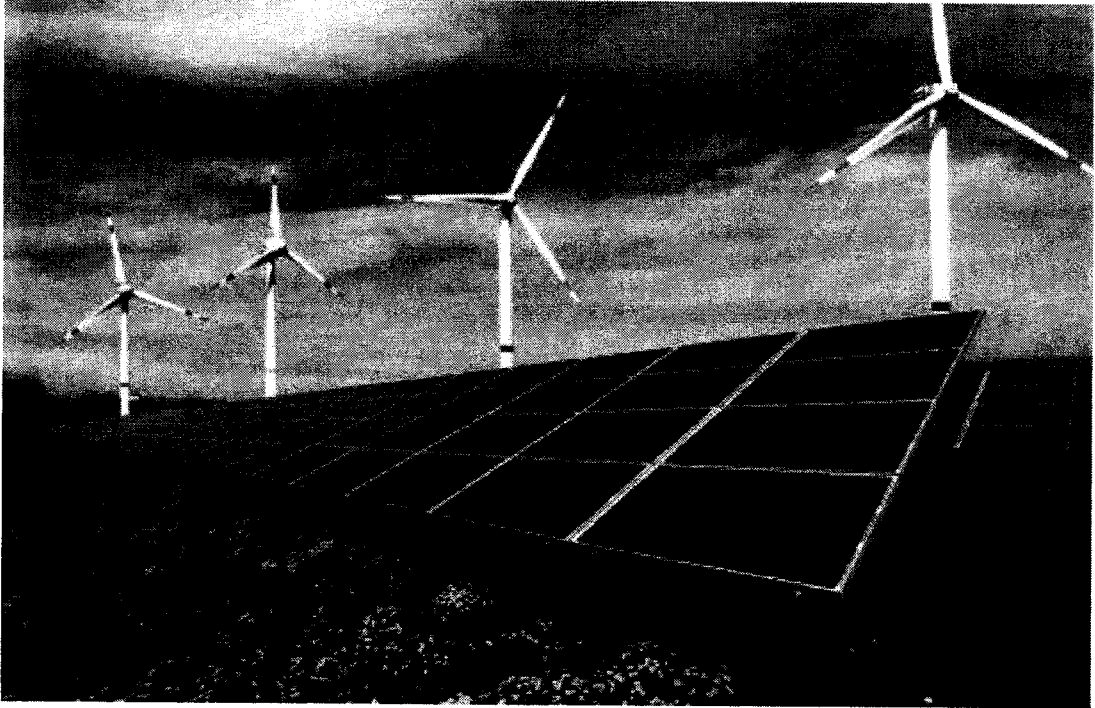
# Asia's Sinking Cities

Risk to Asian cities due to rising sea levels and flooding\* by 2030



\* GDP Purchasing power parity (PPP) shows how much each currency can buy in its respective country

**Fig. 3.2 for Question 3**  
**Clean Energy Sources**





Name: \_\_\_\_\_

Register Number: \_\_\_\_\_

Class: \_\_\_\_\_



南橋中學

**NAN CHIAU HIGH SCHOOL****PRELIMINARY EXAMINATION 2025  
SECONDARY FOUR EXPRESS**

For Marker's Use

**GEOGRAPHY****2279/02**

Paper 2

**29 August 2025, Friday****1 hour 45 minutes**

Candidates answer on the Question Paper.

**READ THESE INSTRUCTIONS FIRST**

Write your name, class and index number on all the work you hand in.

Write in dark blue or black pen.

You may use an HB pencil for any diagrams or graphs.

Do not use staples, paper clips, glue or correction fluid.

Answer **all** questions.

The Insert contains additional resources referred to in the questions.

The number of marks is given in brackets [ ] at the end of each question or part question.

The total marks for this paper is 50.

Answer all questions.

**1 Cluster 1: Geography in Everyday Life**

(a) Study Fig. 1.1 (Insert), which shows the locations of popular shopping malls and Shibuya Station in Tokyo.

i. Using Fig. 1.1 (Insert), suggest one reason why cities like Tokyo develop shopping malls in close spatial association with subway stations.

.....  
.....  
.....  
.....  
.....  
.....  
.....  
.....  
.....[2]

Study Fig. 1.2 (Insert), which shows Todoroki Valley in central Tokyo.

ii. Using Fig. 1.2 (Insert), explain how nature in this area may provide regulating ecosystem services.

.....  
.....  
.....  
.....  
.....  
.....  
.....  
.....  
.....  
.....[3]

























*Copyright Acknowledgements:*

Figure 1.1	©	<a href="https://www.booking.com/hotel/jp/center-of-shibuya-9min-walk-from-shibuya-max-8ppl.id.htm?activeTab=photosGallery">https://www.booking.com/hotel/jp/center-of-shibuya-9min-walk-from-shibuya-max-8ppl.id.htm?activeTab=photosGallery</a>
Figure 1.2	©	<a href="https://blog.japanwondertravel.com/10-nature-spots-in-tokyo-11677">https://blog.japanwondertravel.com/10-nature-spots-in-tokyo-11677</a>
Figure 1.3	©	Adapted from <a href="https://www.japanfs.org/en/news/archives/news_id027856.html">https://www.japanfs.org/en/news/archives/news_id027856.html</a>
Figure 1.4	©	<a href="https://www.npr.org/sections/the-picture-show/2025/01/13/g-s1-42407/sec-california-wildfire-devastation-pictures-altadena-eaton-palisades">https://www.npr.org/sections/the-picture-show/2025/01/13/g-s1-42407/sec-california-wildfire-devastation-pictures-altadena-eaton-palisades</a>
Figure 1.5	©	<a href="https://www.npr.org/sections/the-picture-show/2025/01/13/g-s1-42407/sec-california-wildfire-devastation-pictures-altadena-eaton-palisades">https://www.npr.org/sections/the-picture-show/2025/01/13/g-s1-42407/sec-california-wildfire-devastation-pictures-altadena-eaton-palisades</a>
Figure 2.1	©	Adapted from <a href="https://www.reuters.com/world/asia-pacific/what-caused-powerful-earthquake-myanmar-thailand-2025-03-28/">https://www.reuters.com/world/asia-pacific/what-caused-powerful-earthquake-myanmar-thailand-2025-03-28/</a> Adapted from <a href="https://www.britannica.com/event/Myanmar-earthquake-of-2025">https://www.britannica.com/event/Myanmar-earthquake-of-2025</a>
Figure 2.2	©	Adapted from <a href="https://www.straitstimes.com/singapore/spores-cyborg-cockroaches-helping-with-search-and-rescue-efforts-in-myanmar-quake">https://www.straitstimes.com/singapore/spores-cyborg-cockroaches-helping-with-search-and-rescue-efforts-in-myanmar-quake</a> Adapted from <a href="https://www.scdf.gov.sg/home/about-scdf/international-engagement/overseas-missions/earthquake-in-myanmar--march-2025">https://www.scdf.gov.sg/home/about-scdf/international-engagement/overseas-missions/earthquake-in-myanmar--march-2025</a>
Figure 3.1	©	<a href="https://vocal.media/trader/trump-tariffs-vs-the-world">https://vocal.media/trader/trump-tariffs-vs-the-world</a>
Figure 3.2	©	Adapted from <a href="https://www.channelnewsasia.com/singapore/us-tariffs-impact-singapore-lee-hsien-loong-economic-society-dialogue-5239856">https://www.channelnewsasia.com/singapore/us-tariffs-impact-singapore-lee-hsien-loong-economic-society-dialogue-5239856</a>
Figure 3.3	©	Adapted from <a href="https://businesstravelerusa.com/news/singapore-changi-terminal-5/">https://businesstravelerusa.com/news/singapore-changi-terminal-5/</a>
Figure 3.4	©	<a href="https://www.gstc.org/singapore-hotel-sustainability-roadmap/">https://www.gstc.org/singapore-hotel-sustainability-roadmap/</a>



Name: \_\_\_\_\_ Register Number: \_\_\_\_\_ Class: \_\_\_\_\_



南橋中學

**NAN CHIAU HIGH SCHOOL**

**PRELIMINARY EXAMINATIONS 2025  
SECONDARY FOUR EXPRESS**

---

**Geography**

**2279/02**

Paper 2  
INSERT

**29 August 2025, Friday**

**1 hour 45 minutes**

Candidates answer on the Question Paper.

---

**READ THESE INSTRUCTIONS FIRST**

This insert contains additional resources referred to in the questions.

---

This paper consists of **10** printed pages including the coverpage.



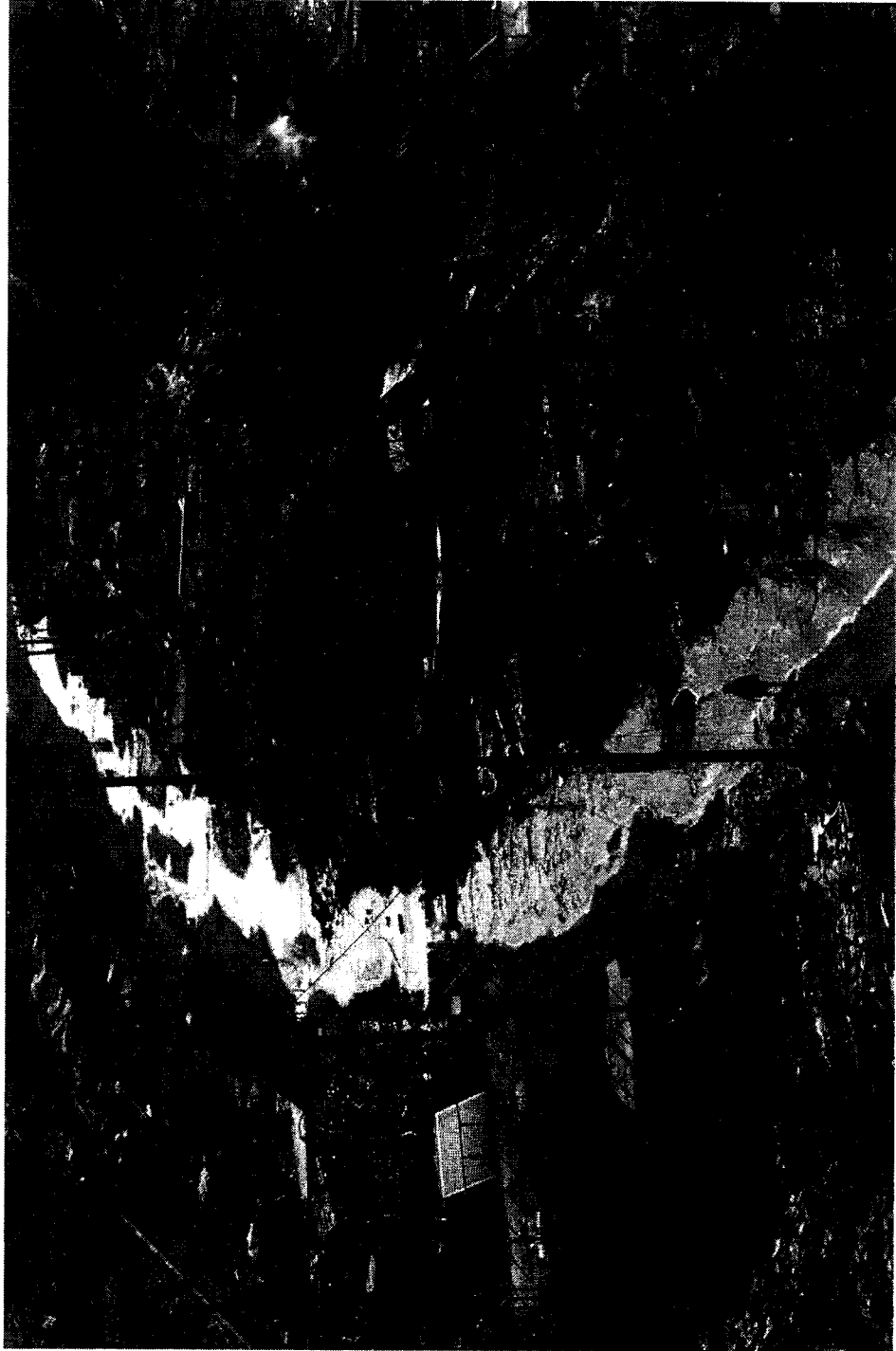
**Fig. 1.2 for Question 1**

**Todoroki Valley in Central Tokyo.**



**Fig. 1.4 for Question 1**

**The destruction left by the Palisades Fire in the Pacific Palisades neighborhood of Los Angeles.**



**Fig 1.5 for Question 1**

**A person sits amid the rubble of her mother's home, which was destroyed by the Palisades.**

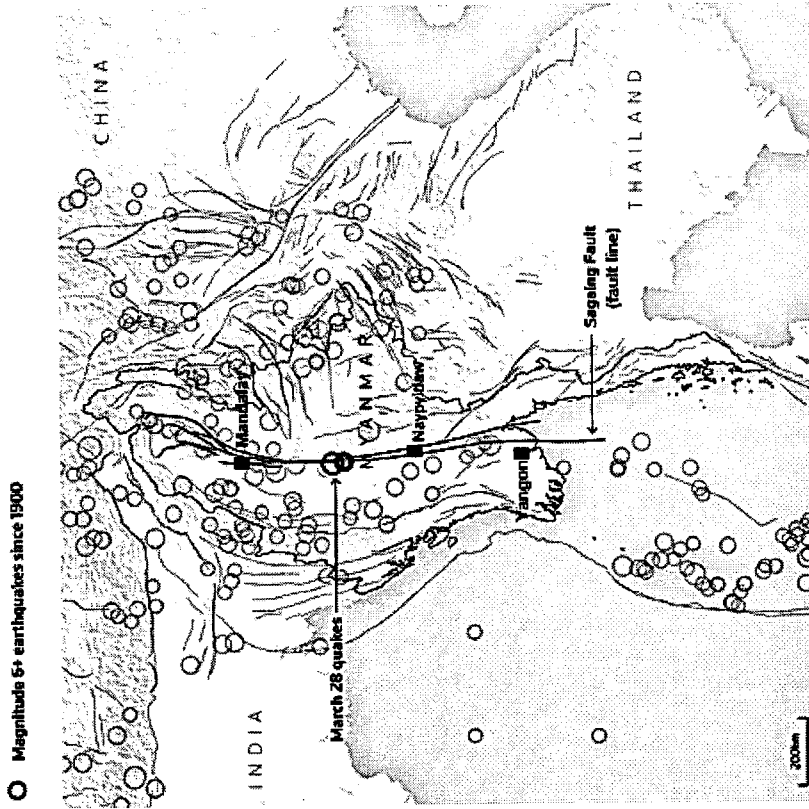


**Fig 2.1 for Question 2**

**A map showing location of Sagaing fault and distribution of earthquakes in Myanmar.**

**Myanmar rattled by magnitude 7.7 earthquake**

The Sagaing fault line runs through or close to major cities including Yangon, Naypyidaw and Mandalay.



Source: USGS  
Sudev Kivada • March 28, 2025 | REUTERS

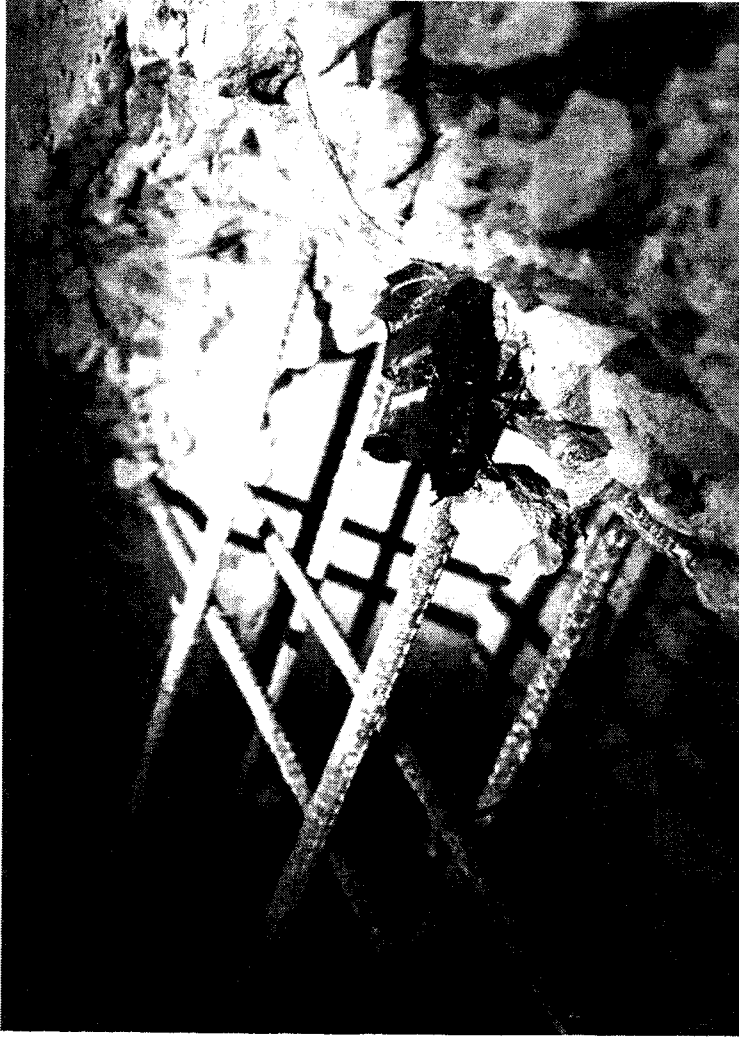
**MYANMAR EARTHQUAKE OF 2025**  
**Magnitudes: 7.7**  
**Date: March 28, 2025, 12:50 PM MMT**  
**Location: 22.0° N 95.9° E**  
**Depth: 10 km (shallow focus)**

**MAJOR AFTERSHOCK**  
**Date: March 28, 2025, 1:02 PM MMT**  
**Magnitudes: 6.7**  
**Location: 21.7° N 96.0° E**  
**Depth: 10 km (6.23 mi)**

City	Population (2025)	Land Area (km <sup>2</sup> )
Naypyidaw	788,238	7054
Mandalay	1,594,300	164

**Fig 2.2 for Question 2**

### Singapore's cyborg cockroaches helping with search-and-rescue efforts in Myanmar quake.



Following the 28 March 2025 earthquake in Myanmar, researchers from Nanyang Technological University (NTU) deployed cyborg cockroaches to assist in locating survivors trapped under rubble. These remote-controlled insects, equipped with tiny sensors and cameras, were used by the Singapore Civil Defence Force's Operation Lionheart contingent during their mission in Naypyidaw. The Singapore Civil Defence Force's Operation Lionheart contingent is an elite overseas rescue team specially trained and equipped to provide humanitarian assistance and conduct search and rescue operations in disaster-stricken regions. The cyborgs were able to enter collapsed structures that were too narrow or dangerous for humans or dogs to access.

**Fig 3.1 for Question 3**

Cartoon on global trade tensions following the introduction of tariffs by the United States in 2025.



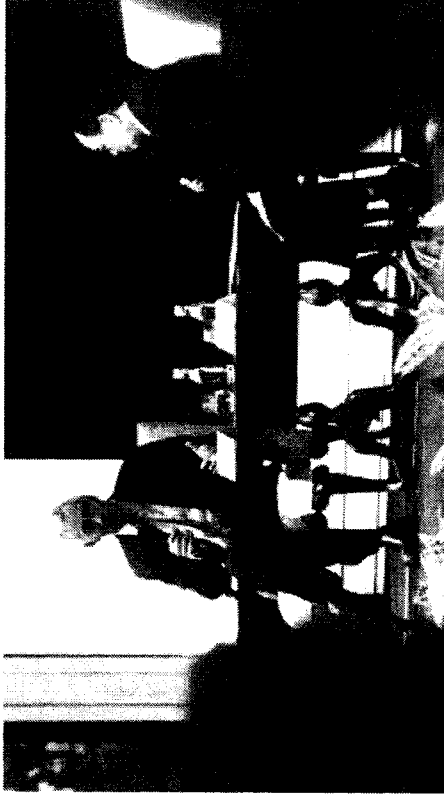
Fig 3.2 for Question 3

Article on the impact of changing global trade policies on Singapore.

**Singapore Not Immune to Shifting  
Global Trade Policies: Lee Hsien Loong**

Ang Hwee Min

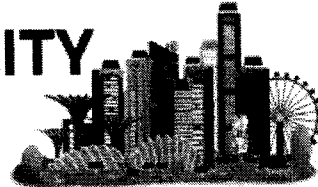
16 Jul 2025 12:58AM



As a major shipping and trading hub, Singapore remains highly exposed to changes in global trade policies, Senior Minister Lee Hsien Loong said at the Economic Society of Singapore dinner. Despite its free trade agreement with the US, Singapore now faces a 10 per cent tariff on some exports. "We console ourselves, that that is the best rate, and we hope that we stay there," Mr. Lee remarked, highlighting the uncertainty of the current environment. He urged Singapore to "be a good global citizen" and adapt, as shifting trade rules continue to impact economies reliant on open trade.

Fig 3.4 for Question 3  
Singapore Hotel Sustainability Roadmap

# SINGAPORE HOTEL SUSTAINABILITY ROADMAP

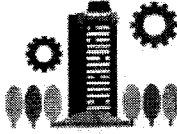


## VISION

To create a hotel industry in Singapore that



Integrates sustainability as a core value across the entire hotel ecosystem



Is established as a living lab for innovation and utilises sustainability as a key thrust to drive business competitiveness and growth



Is recognised as an industry leader for sustainability in the region

## TARGETS



At least 60% of hotel room stock to achieve internationally-recognised hotel sustainability certification (e.g. by the Global Sustainable Tourism Council) by 2025



For hotels to commence tracking of emissions by 2023, reduce emissions by 2030, with a view to achieve net-zero emissions by 2050

## 4 CORE AREAS OF FOCUS



Water Conservation



Energy Conservation



Waste Management, Recycling & the Circular Economy



Sustainable Sourcing and Procurement

Co-developed by

