



NAN HUA HIGH SCHOOL
Preliminary Examination 2025

CANDIDATE
 NAME

CENTRE
 NUMBER

--	--	--	--	--

CLASS

--	--	--

INDEX
 NUMBER

--	--

GEOGRAPHY

Paper 1

2279/01

27 August 2025

1 hour 45 minutes

Candidates answer on the Question Paper.
 Additional materials: Insert

READ THESE INSTRUCTIONS FIRST

Write your name, class, and index number on all the work you hand in.

Write in dark blue or black pen.

You may use an HB pencil for any diagrams or graphs.

Do not use staples, paper clips, glue, or correction fluid/tape.

Answer **all** questions.

The insert contains additional resources referred to in the questions.

The number of marks is given in brackets [] at the end of each question or part question.

The total mark for this paper is **50**.

This document consists of **13** printed pages, **1** blank page and **1** Insert.

[Turn over

.....

[5]

- (c) To further support their investigation, the students also counted the number of visitors to Marina Bay Sands. They positioned themselves at several locations: at the four Bayfront Mass Rapid Transit (MRT) entrances that connect to Marina Bay Sands and the three Marina Bay Sands taxi stands on a weekday to conduct the count of visitors. They used a tally counter to count the visitors. Table 1.1 shows a tabulation of their data.

Time / location	No. of visitors at the entrances of Bayfront MRT station	No. of visitors at Marina Bay Sands Shoppes taxi stands
10.00am - 11.00am	250	80
11.00am - 12.00pm	350	150
12.00pm - 1.00pm	300	180
1.00pm - 2.00pm	400	130

Table 1.1

- (i) From Table 1, identify the period of day which is most frequented by visitors.

.....
[1]

BLANK PAGE*Copyright Acknowledgements:*

- Question 1(a) <https://www.marinabaysands.com/museum/visit.html#zoWuq7jsSkoR5LK3.97>
Question 1(b) <https://www.marinabaysands.com/museum/visit.html#zoWuq7jsSkoR5LK3.97>
Question 2(a) <http://www.tdc.co.tt/index.php>
Question 2(c) <https://news.cgtn.com/news/3d3d414e7841444e78457a6333566d54/index.html>
Question 3(a) https://www.researchgate.net/figure/Changes-in-global-average-surface-temperature-sea-level-and-Northern-Hemisphere-snow_fig1_326224054

**NAN HUA HIGH SCHOOL****PRELIMINARY EXAMINATION 2025**

GEOGRAPHY

Paper 1

2279/01**27 August 2025****INSERT****1 hour 45 minutes**

READ THESE INSTRUCTIONS FIRST

This insert contains additional resources referred to in the questions.

Fig. 1 for Questions 1(a) and 1(b)

Map of Marina Bay Sands, Singapore

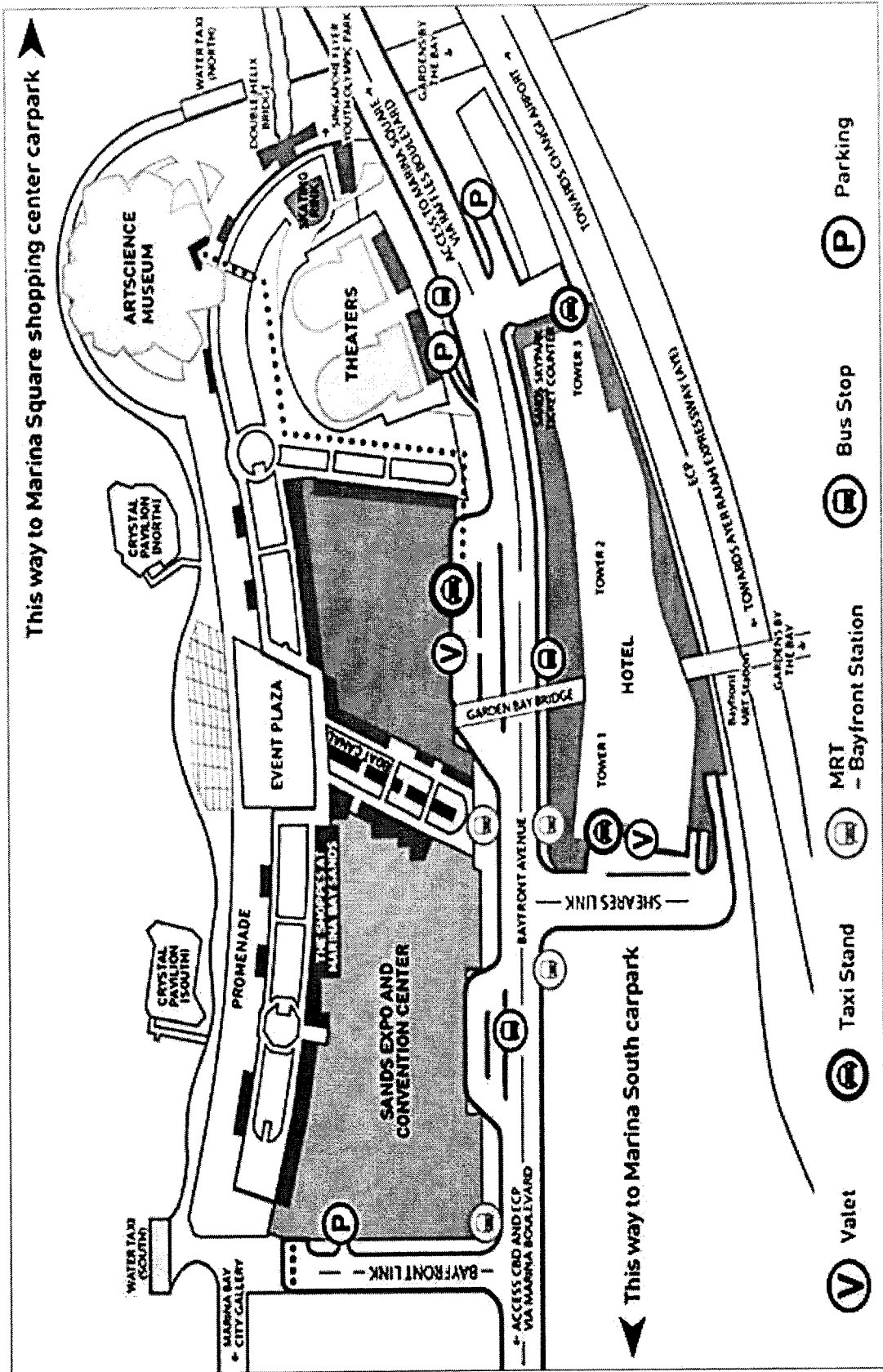


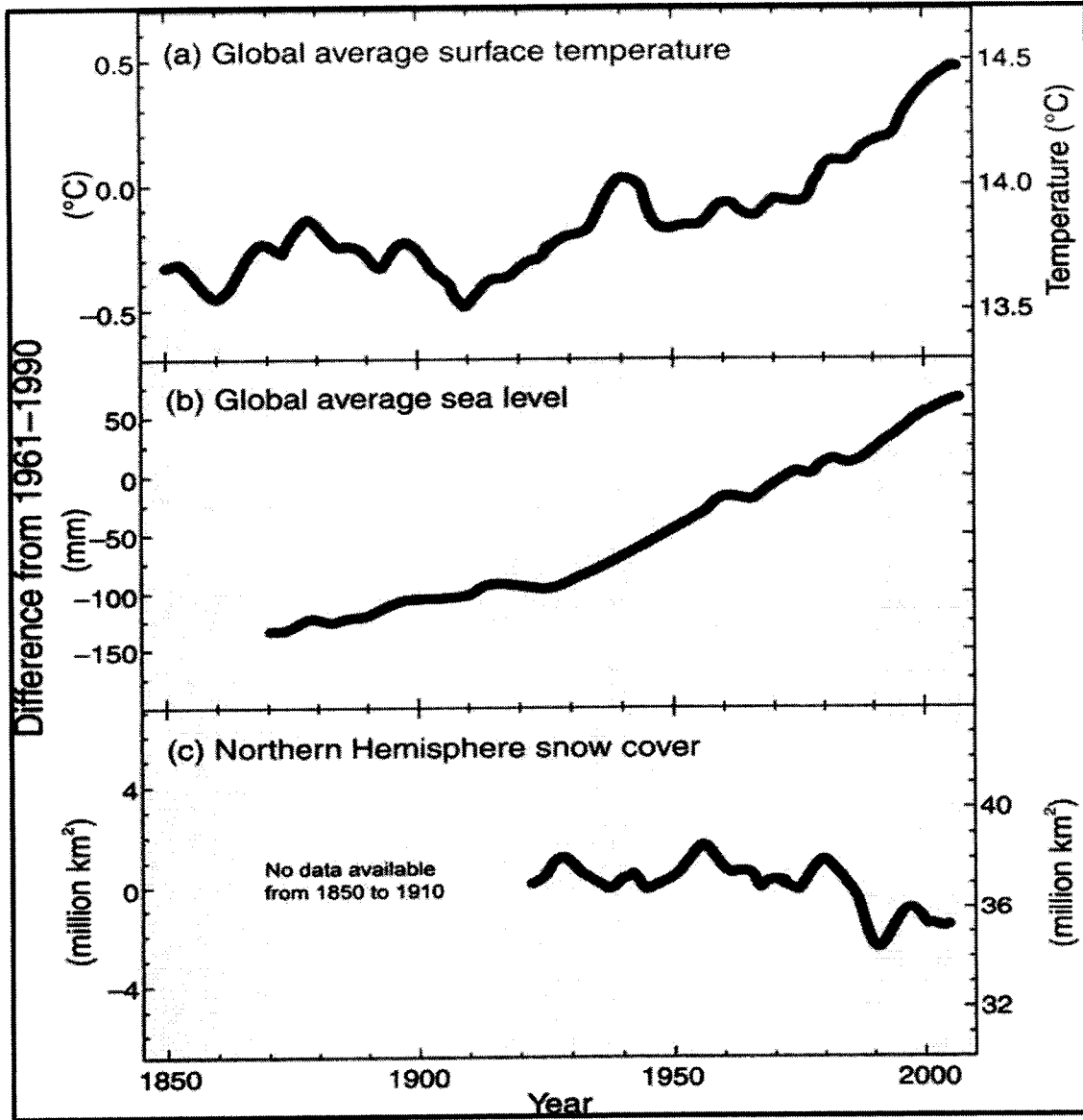
Fig. 4 for Question 2(c)

A Beach next to the Aegean Sea in Greece



Fig. 5 for Question 3(a)

A graph showing global average surface temperature, global average sea level and northern hemisphere snow cover from 1850 to 2000



Copyright Acknowledgements:

- Question 1(a) <https://www.marinabaysands.com/museum/visit.html#zoWuq7jsSkoR5LK3.97>
- Question 1(b) <https://www.marinabaysands.com/museum/visit.html#zoWuq7jsSkoR5LK3.97>
- Question 2(c) <https://news.cgtn.com/news/3d3d414e7841444e78457a6333566d54/index.html>
- Question 3(a) https://www.researchgate.net/figure/Changes-in-global-average-surface-temperature-sea-level-and-Northern-Hemisphere-snow_fig1_326224054



NAN HUA HIGH SCHOOL
Preliminary Examination

CANDIDATE
NAME

CENTRE
NUMBER

--	--	--	--	--

CLASS

--	--	--

INDEX
NUMBER

--	--

GEOGRAPHY

2279/02

Paper 2

29 August 2025

1 hour 45 minutes

Candidates answer on the Question Paper.

Additional materials: Insert

READ THESE INSTRUCTIONS FIRST

Write your class, index number and name on all the work you hand in.

Write your answers on the lines provided for each question.

Write in dark blue or black pen. You may use a pencil for any diagrams or graphs.

Do not use staples, paper clips, glue, highlighters, or correction fluid/tape.

Answer **all** questions.

The Insert contains additional resources referred to in the questions.

The number of marks is given in brackets [] at the end of each question or part question.

The total mark for this paper is **50**.

This document consists of **12** printed pages, **2** blank pages and **1** Insert.

[Turn over

(b) Study Fig. 3.1 (Insert), which shows information on the proposed Long Island project at East Coast to help Singapore manage climate change.

Using Fig. 3.1, explain how the proposed Long Island project will help Singapore manage the threat of climate change.

.....
.....
.....
.....
.....
.....
.....
.....
.....
.....[3]

(c) Study Fig. 3.2 (Insert), which shows Singapore's birth rate and proportion of population aged 65 years old and above from 2000 to 2025.

Describe the trend of Singapore's birth rate and proportion of population aged 65 years old and above.

.....
.....
.....
.....
.....
.....
.....
.....
.....
.....
.....
.....
.....
.....
.....
.....
.....
.....
.....
.....
.....[4]

BLANK PAGE

BLANK PAGE

Copyright Acknowledgements:

Question 1	Fig. 1.1	https://www.channelnewsasia.com/singapore/bidadari-park-opens-hundred-acre-wood-lake-trails-playground-bird-watching-4581141
Question 1	Fig. 1.2	https://www.channelnewsasia.com/singapore/tanglin-halt-rejuvenation-integrated-development-new-flats-hawker-centre-market-polyclinic-3857126
Question 2	Fig. 2.1	https://edition.cnn.com/2023/02/07/middleeast/earthquake-turkey-syria-why-deadly-intl
Question 3	Fig. 3.1	https://www.sg101.gov.sg/resources/connexionsg/environment-Climate-Resilient-Infrastructure/



NAN HUA HIGH SCHOOL
Preliminary Examination

GEOGRAPHY

2279/02

Paper 2

29 August 2025

1 hour 45 minutes

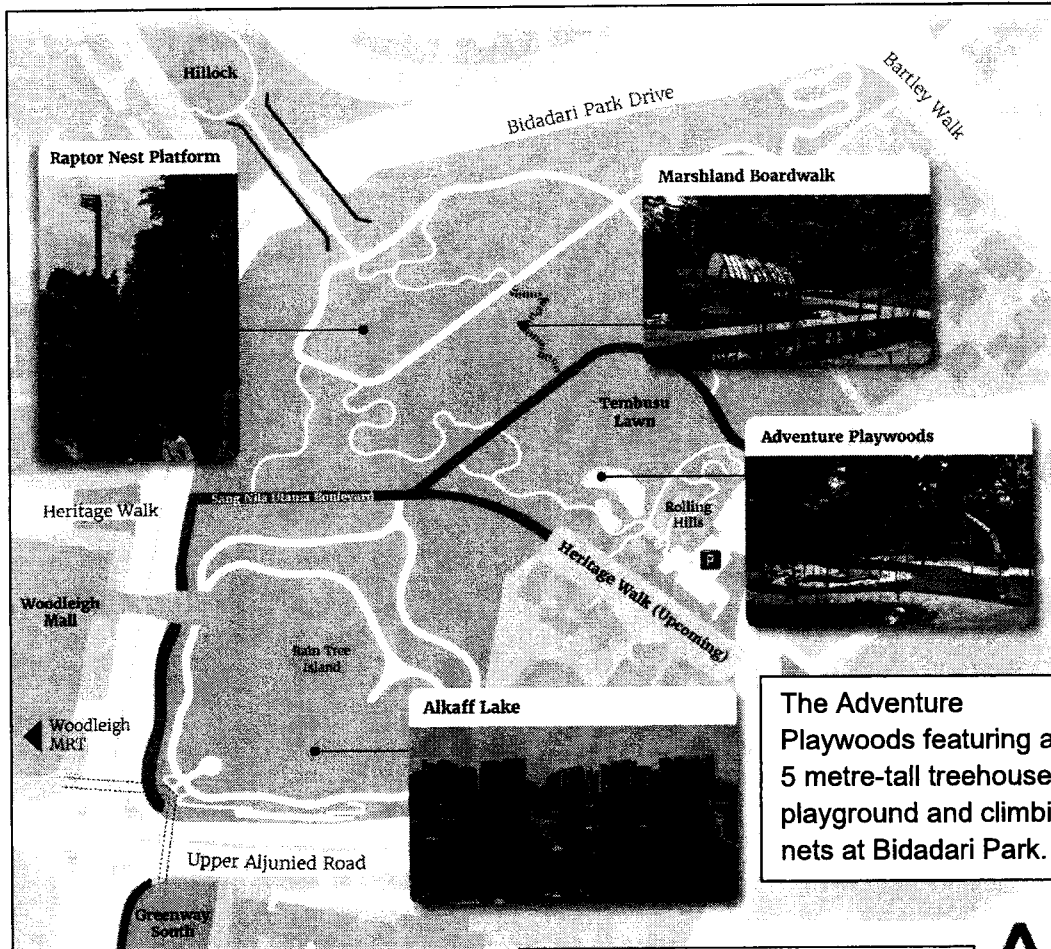
INSERT

READ THESE INSTRUCTIONS FIRST

This Insert contains additional resources referred to in the questions.

Fig. 1.1 for Question 1

Map of Bidadari Park and its features



The Adventure Playwoods featuring a 5 metre-tall treehouse playground and climbing nets at Bidadari Park.



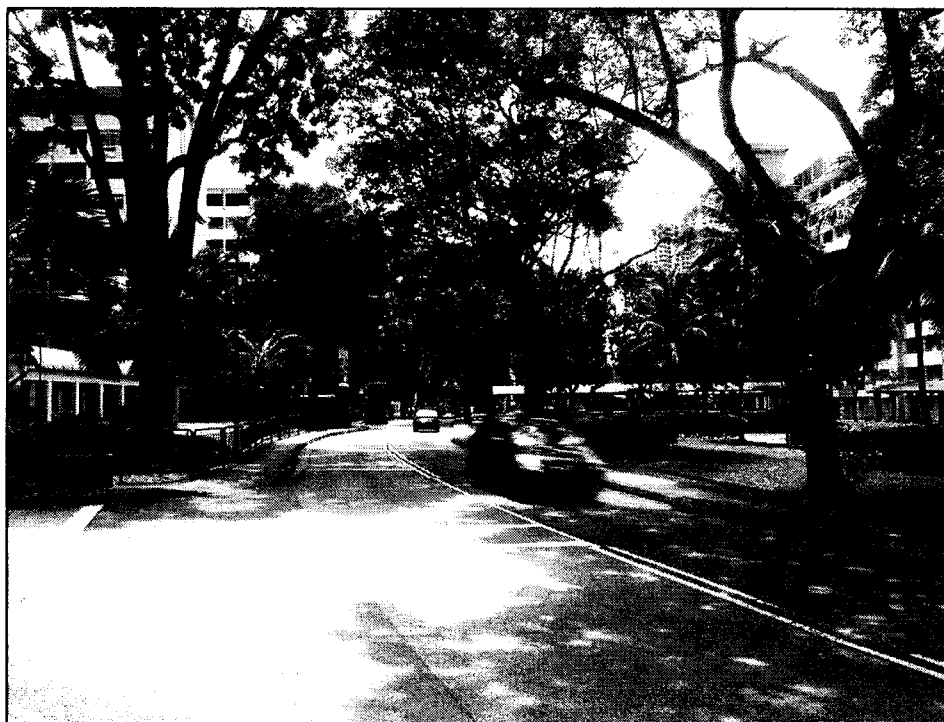
A cascading creek leading to Alkaff Lake directs excess rainwater from the surrounding areas into the lake.

This footpath at Alkaff Lake may be flooded during intense rainfall and when water levels rise to 4 metres.



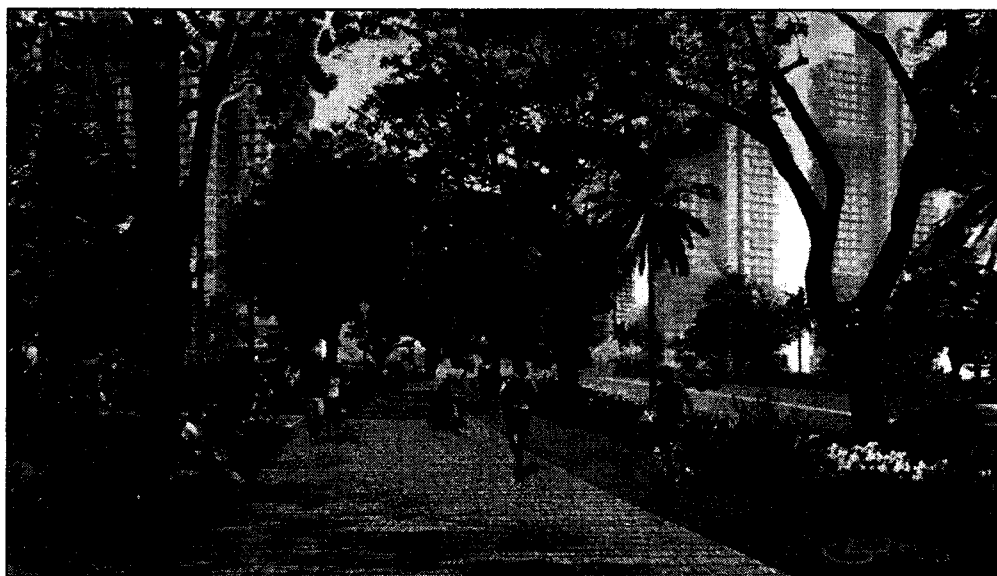
Figs. 1.2 and 1.3 for Question 1

Changes to Commonwealth Drive as part of redevelopment of Tanglin Halt



Existing Commonwealth Drive. (Photo: HDB)

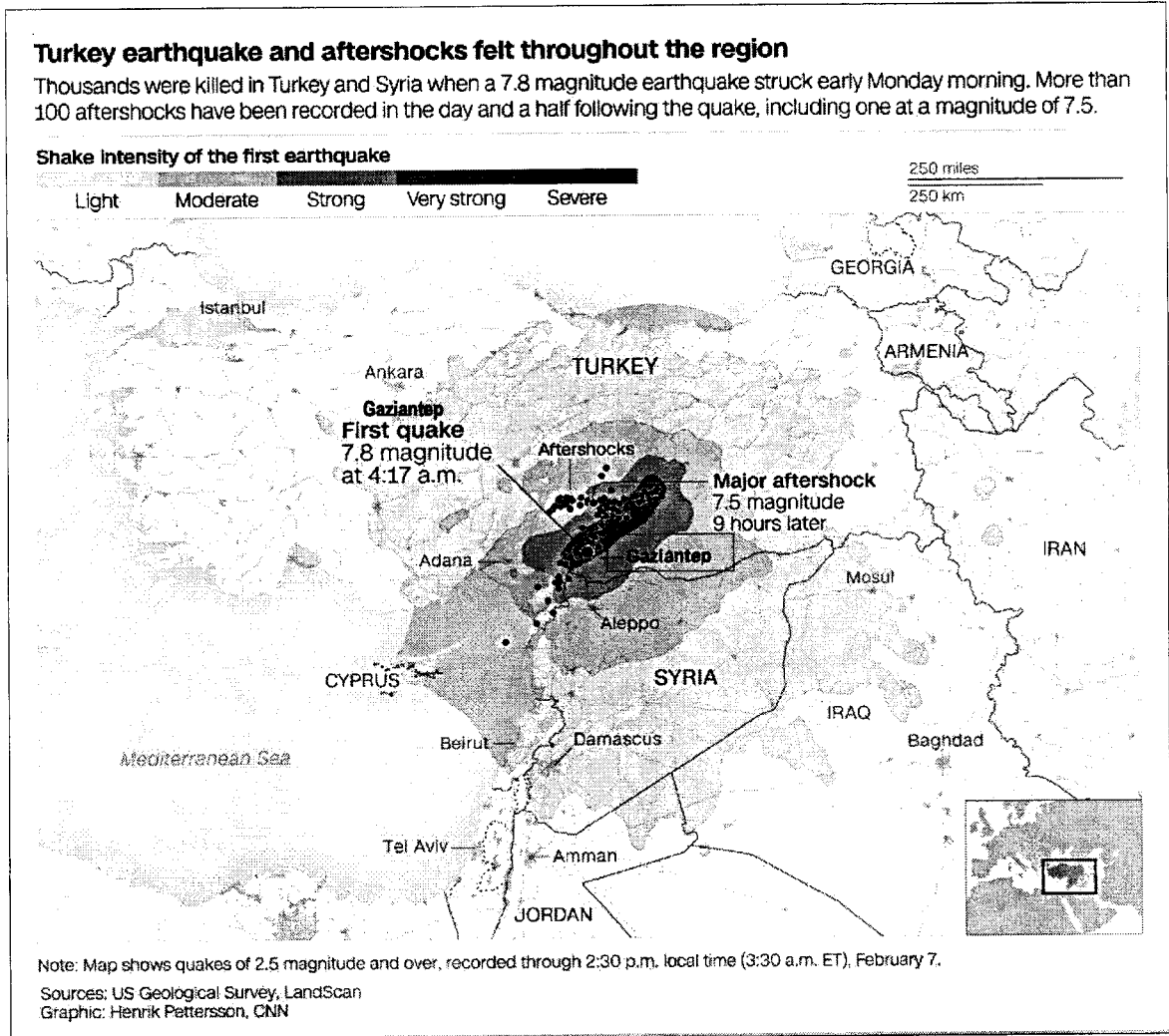
Fig. 1.3 for Question 1



Artist's impression of dedicated cycling paths and pedestrian footpaths between Commonwealth MRT Station and the Rail Corridor. (Image: HDB)

Fig. 2.1 for Question 2

A map showing the shake intensity of the earthquake and the aftershocks that happened in Turkey in 20230



Legend
● Aftershocks

Fig. 2.2 for Question 2

Comparison between Turkey earthquake in 2023 and Peru earthquake in 2021

Feature	2023 Turkey-Syria Earthquake	2021 Peru Earthquake
Magnitude on the Richter scale	7.8 Aftershock at 7.5	7.5
Depth of Focus	17.9 km	112 km
Location	High population density	Sparse population density
Geology	Soft sediments, many unreinforced buildings	Dense bedrock, forested
Damage Level	Thousands of buildings collapsed	Some structural cracks on buildings, few collapses
Casualties	Over 50,000 dead, 100,000+ injured	1 dead, ~100 injured
Infrastructure Impact	Massive urban destruction, road and bridge collapse	Isolated damage in towns, some road disruptions

Fig. 3.1 for Question 3

**Information on the proposed Long Island project at East Coast
to help Singapore manage climate change**

The 'Long Island' offers an integrated solution that will meet multiple national needs. The project entails reclaiming about 800 hectares of land off the East Coast, potentially in the form of 'islands', to protect the low-lying area from sea level rise and strengthen Singapore's flood resilience, enhance our water resilience with a new reservoir, and create additional land to meet future development needs.

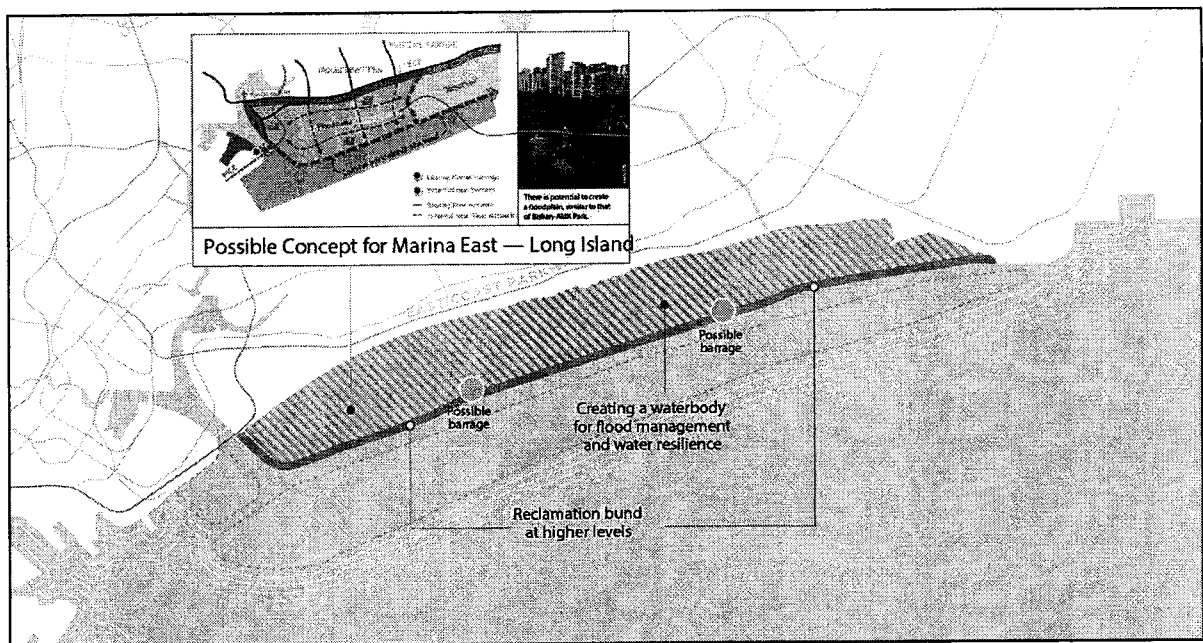
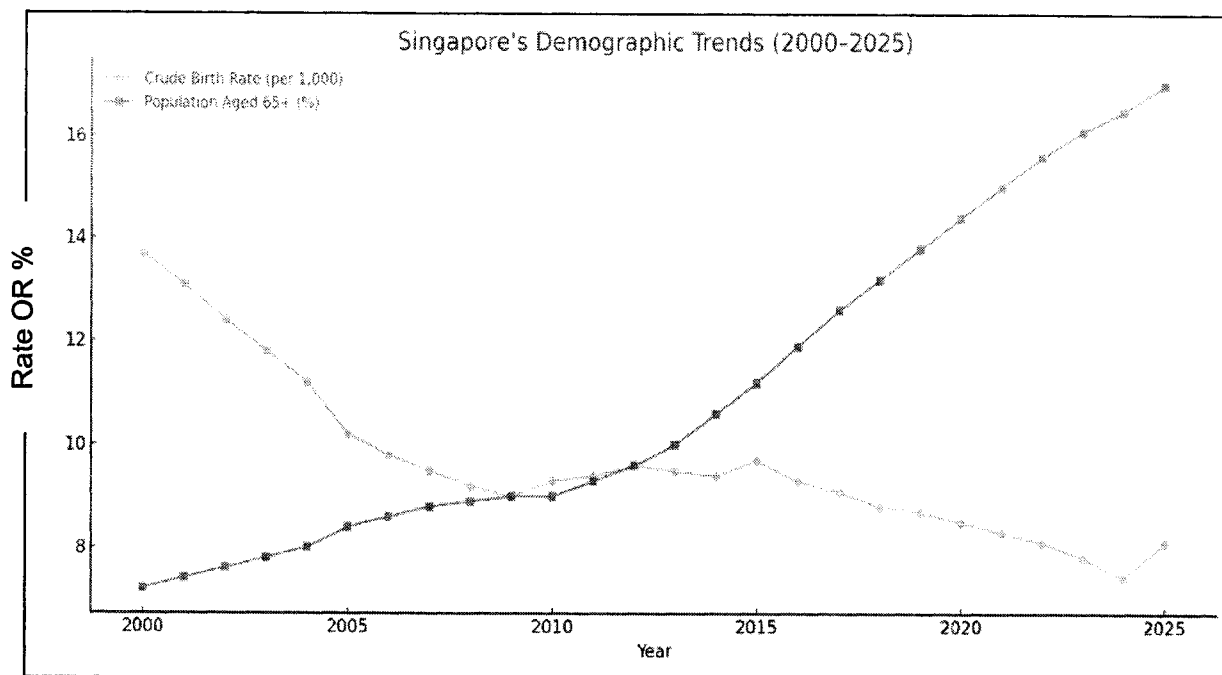


Fig. 3.2 for Question 3

**Singapore's birth rate and proportion of aged population
of 65 years old and above**



BLANK PAGE

Copyright Acknowledgements

Question 1	Fig. 1.1	https://www.channelnewsasia.com/singapore/bidadari-park-opens-hundred-acre-wood-lake-trails-playground-bird-watching-4581141
Question 1	Fig. 1.2	https://www.channelnewsasia.com/singapore/tanglin-halt-rejuvenation-integrated-development-new-flats-hawker-centre-market-polyclinic-3857126
Question 2	Fig. 2.1	https://edition.cnn.com/2023/02/07/middleeast/earthquake-turkey-syria-why-deadly-intl
Question 3	Fig. 3.1	https://www.sg101.gov.sg/resources/connexionsg/environment-Climate-Resilient-Infrastructure/