



JC 2 H1 Geography

8813/01

Paper 1

14 September 2017

3 Hours

Additional Materials: Insert
World Outline map

READ THESE INSTRUCTIONS FIRST

Write your name and Civics Group clearly on **all** your answer scripts.
Write in dark blue or black pen on both sides of the paper.
You may use a soft pencil for any diagrams, graphs or rough working.

Answer **ALL QUESTIONS** in **Section A**.

Answer **two** questions, each from a different theme in **Section B**.

Start each question on a fresh sheet of paper.

1. At the end of the examination, fasten this **cover sheet** and all your work in **chronological order** together securely submission.

The number of marks is given in the brackets [] at the end of each question or part question.
You should make a reference to appropriate examples studied in the field or the classroom, even where the examples are not specifically requested by the question.
Sketch maps and diagrams should be drawn wherever they serve to illustrate an answer.
You are reminded of the need for good English and clear presentation in your answers.

This document consists of **6** printed pages including **1** blank page

Name: _____

Class: _____

Index number: _____

Qn no. (Section A)	Marks	Qn no. (Section B*)	Marks
1		3 or 4	
2		5 or 6	
Total			

*Please **circle** the question number attempted accordingly

Section A

Answer **ALL** questions in this section.

Theme 3: Geographical Investigation

Residential Satisfaction of the Elderly in Prague

- 1 Since the 1990s, Prague, the capital city of the Czech Republic, has undergone urban revitalisation in the form of tourism and property-led regeneration. Significant changes have therefore been observed in Prague given the physical upgrading and enhancement of the city for new social and economic uses. In 2012, a research study was conducted to investigate the residential satisfaction of the elderly living in some Prague neighbourhoods that have experienced revitalisation.

The residential satisfaction of the elderly was investigated in two Prague city centre neighbourhoods. The first neighbourhood was the historical centre Prague 1 which is an area exposed to mass tourism and intense commercial developments. The second neighbourhood was Central Smichov which has experienced intense commercial and residential regeneration.

To measure the residential satisfaction of the elderly, a questionnaire survey containing open and closed questions was used. The open questions took the form of short interviews. The respondents were contacted directly on the streets of the neighbourhoods. The key areas discussed in the survey included the accessibility of shops and services, public spaces and safety, local community interaction and support, and housing. In total there were 225 respondents (149 in Prague 1; 76 in central Smichov) that researchers based their evaluation on the residential satisfaction of the elderly in Prague.

The study concluded that the elderly managed to carry out their critical daily activities of living despite the significant transformations of their neighbourhoods. The impacts of urban revitalisation have not drastically reduced the quality of life of the local elderly. However, certain findings in the research indicate possible risks for the future.

Resources 1 – 3 are selected information from the study.

Resource 1 shows the old-age index by basic settlement units of Prague and the age structure of the population in the study neighbourhoods. Resource 2 shows the satisfaction of the elderly with access to daily stores. Resource 3 shows how safe the elderly feel in the two neighbourhoods.

- (a)** With reference to Resource 1, suggest a possible hypothesis for the research undertaken? [1]
- (b)** With reference to Resources 1, assess the suitability of the sample for the research study that was undertaken. [5]
- (c)** Suggest some considerations in collecting the data for this research. [4]
- (d)** Are Resources 2 and 3 sufficient to support the study's conclusion that the elderly managed to carry out their critical daily activities of living despite the significant transformations of their neighbourhoods? Explain your answer. [6]
- (e)** Identify two other considerations that should have been a part of this study and suggest a plan to carry out an investigation to collect data that will improve the rigour of this research. [9]

Theme 1: Climate and Climate Change
Flooding in Brisbane, Australia

2 Resource 4 shows monthly average rainfall and monthly rainfall for Brisbane in 2010. Resource 5 shows the Brisbane River catchment and the extent of flooding in January 2011. Resource 6 shows a photograph of the Brisbane flooding in January 2011.

(a) Using Resource 4, compare the monthly average rainfall and monthly rainfall for Brisbane in 2010. [3]

(b) Using Resources 4, 5 and 6, account for the Brisbane flooding in January 2011. [6]

(c) Using Resource 6, suggest changes in fluvial processes that may occur during the Brisbane flood event in January 2011. [6]

(d) Using Resource 6 and your own knowledge, explain 2 ways whereby impacts of the 2011 Brisbane flood may be reduced. [4]

(e) Using Resources 4, 5, 6 and your own knowledge, suggest other information required to better evaluate the impacts of the 2011 Brisbane flood. [6]

Section B

Answer **two** questions in this section. **Either** Question 3 **or** Question 4 and **Either** Question 5 **or** Question 6.

Theme 1: Climate and Climate Change

3 (a) Account for the variation of temperature in the tropics. [9]

What's the variation of temperature in tropics?
What are the factors resulting in temperature variations in tropics?

IOQ: Factors affecting temperature

Intro:

(Describe the variation first, you need to know what you are explaining!)

Temp variation

- Diurnal
- Annual temp range
- Low (Af) vs high (BWh)

Explain:

FPO each point! 1 Para 1 Factor!

1. Latitude → seasonality → day + night
2. Cloud cover → Af (high) vs BWh (diurnal, annual)
3. Reflection of SW → reduce daytime temp
4. Continentality / maritime / ocean currents
5. Altitude
6. UHI

Choose distinct factors!! Support each with examples

(b) "The weakening of the Walker Circulation greatly affects rainfall patterns in the tropics." To what extent do you agree with this statement. [16]

What is walker circulation and what is the weakening of walker circulation?

What are the impacts of weakening walker circulation wrt rainfall patterns?

Under what conditions does weakening of walker circulation have that greatly affects walker circulation?

What other factors also affect rainfall patterns?

IOQ: factors affecting rainfall patterns in tropics

Intro:

- What is the walker circulation & what is weakening of walker circulation? (3-7yrs, W & E Pac, mechanism, effects) → draw the diagrams (annotate!! What's happening, why, effects) → refer to diagram in writing and no need to repeat in words
- **NOT** define ppt/ tropics

Weakening of walker circulation greatly affects rainfall patterns	Weakening of walker circulation DOES NOT greatly affects rainfall patterns (other factors)
ONLY W & E Pacific (limited places in the tropics, generally coastal)	Pressure zones (ITCZ/ STH) → THIS IS THE MAJOR CONDITION affecting rainfall patterns
ONLY once every 3-7yrs, during the weakening of WC	Monsoon winds / continental location / topography
Temporal and spatial limited	Climate change
	Tropical Cyclones – bigger spatial influence
	Landuse changes → deforestation → desertification
	Landuse changes → UHI

- 4 (a) Explain the causes of contemporary climate change. [9]
- (b) Discuss the view that use of alternative energy sources is a highly effective solution to combat climate change. [16]

Theme 2: Urban Change

- 5 (a) What are the challenges in managing traffic congestion in less economically developed countries? [9]

(b) 'The difficulty in measuring sustainable development is its biggest challenge'.
Do you agree with this statement?

[16]

6 (a) Account for the development of slums in cities of developed countries. [9]

(b) 'Slums are undesirable in cities but they do offer solutions to some urban challenges'. Do you agree with this statement? [16]

Blank Page

MERIDIAN JUNIOR COLLEGE
PRELIMINARY EXAMINATION
Higher 1

JC 2 H1 Geography

8813/01

Paper 1

14 September 2017

INSERT

3 hours

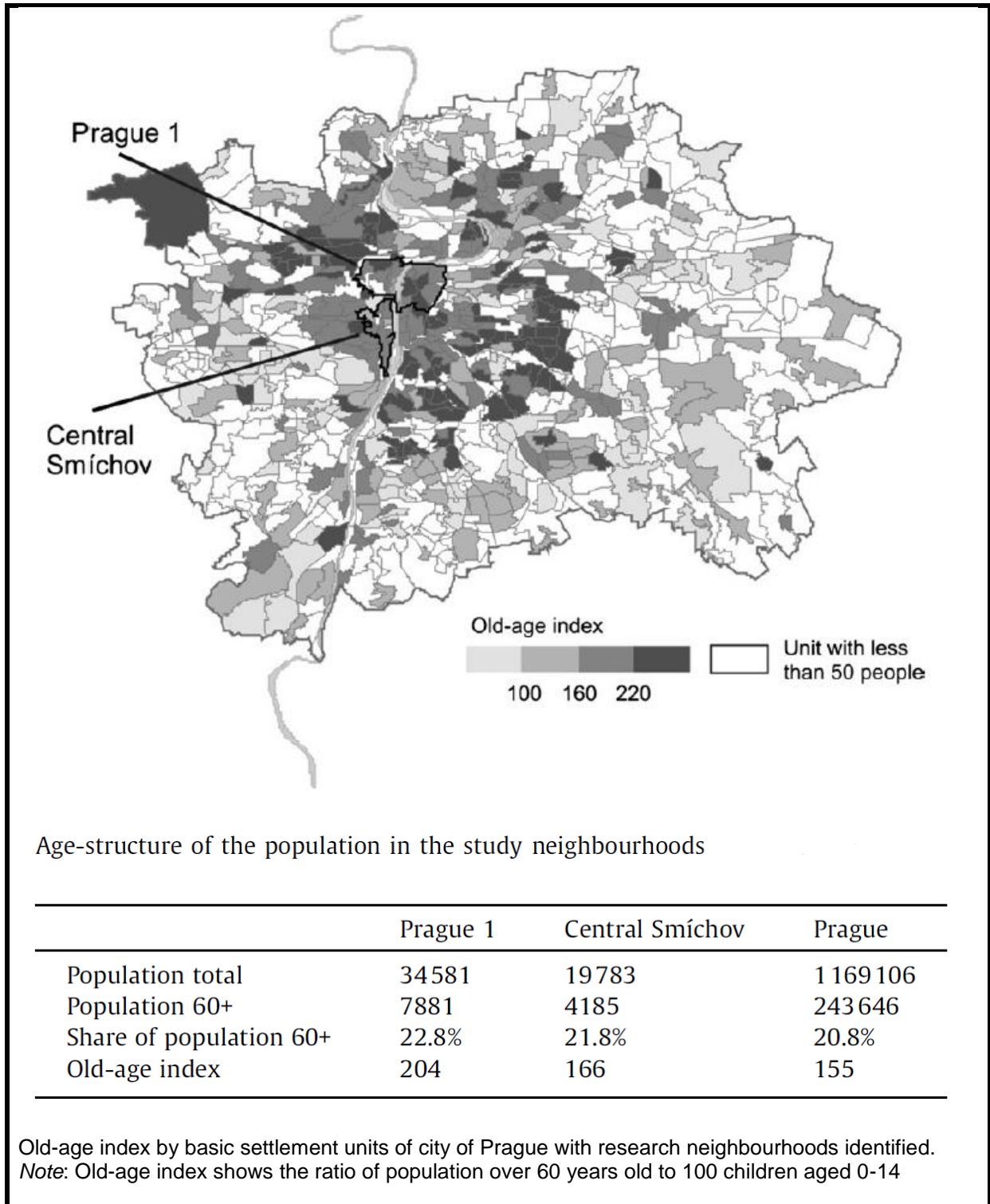
READ THESE INSTRUCTIONS FIRST

This Insert contains all the Figures and Tables referred to in the questions.

This document consists of **6** printed pages.

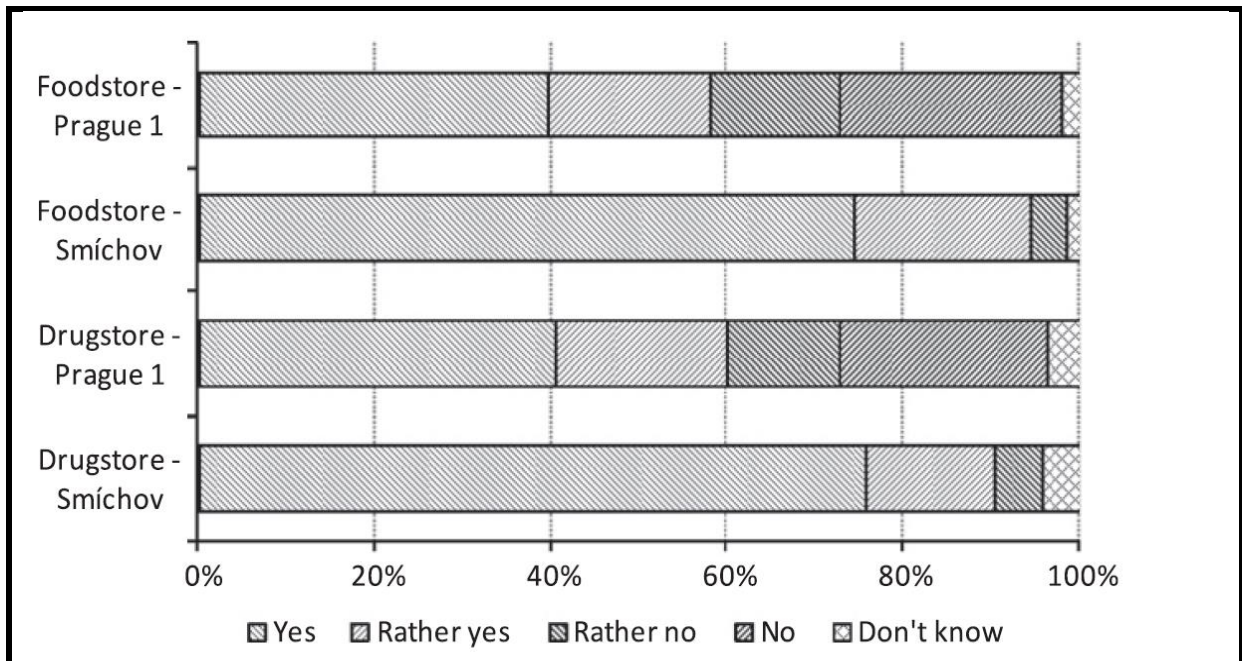
Resource 1 for Question 1

Old-age index by basic settlement units of Prague and age structure of population in study neighbourhoods Prague 1 and Central Smichov



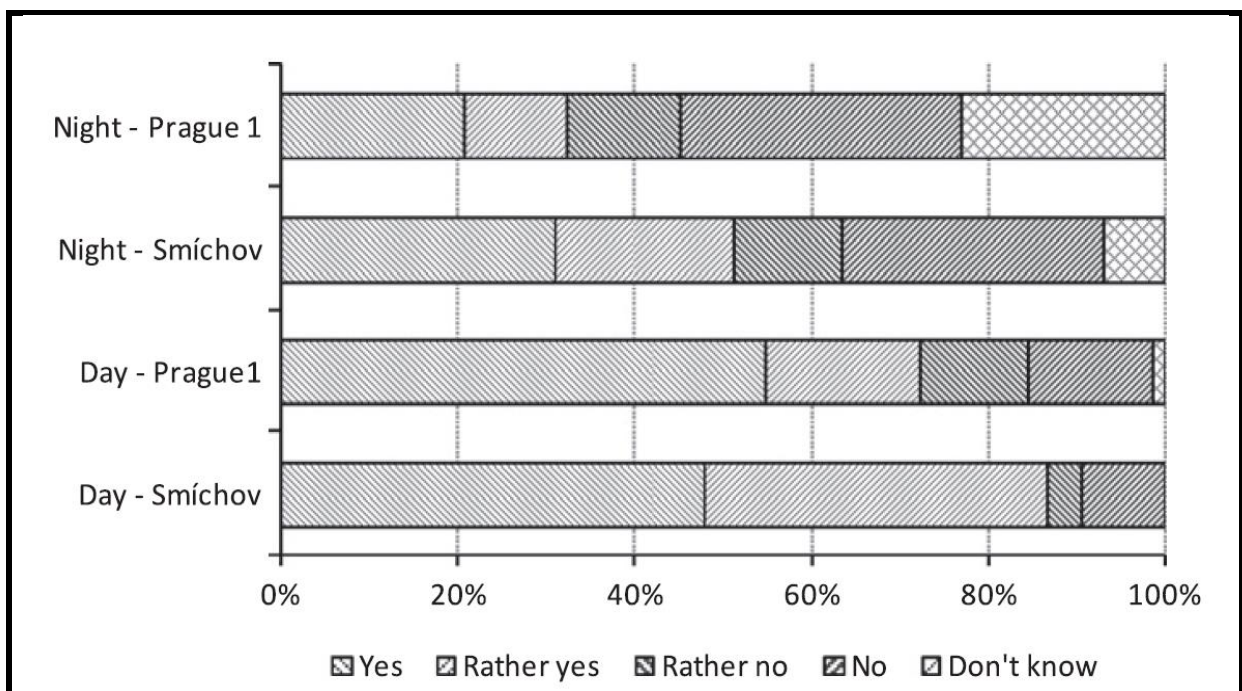
Resource 2 for Question 1

Satisfaction of the elderly with access to daily stores



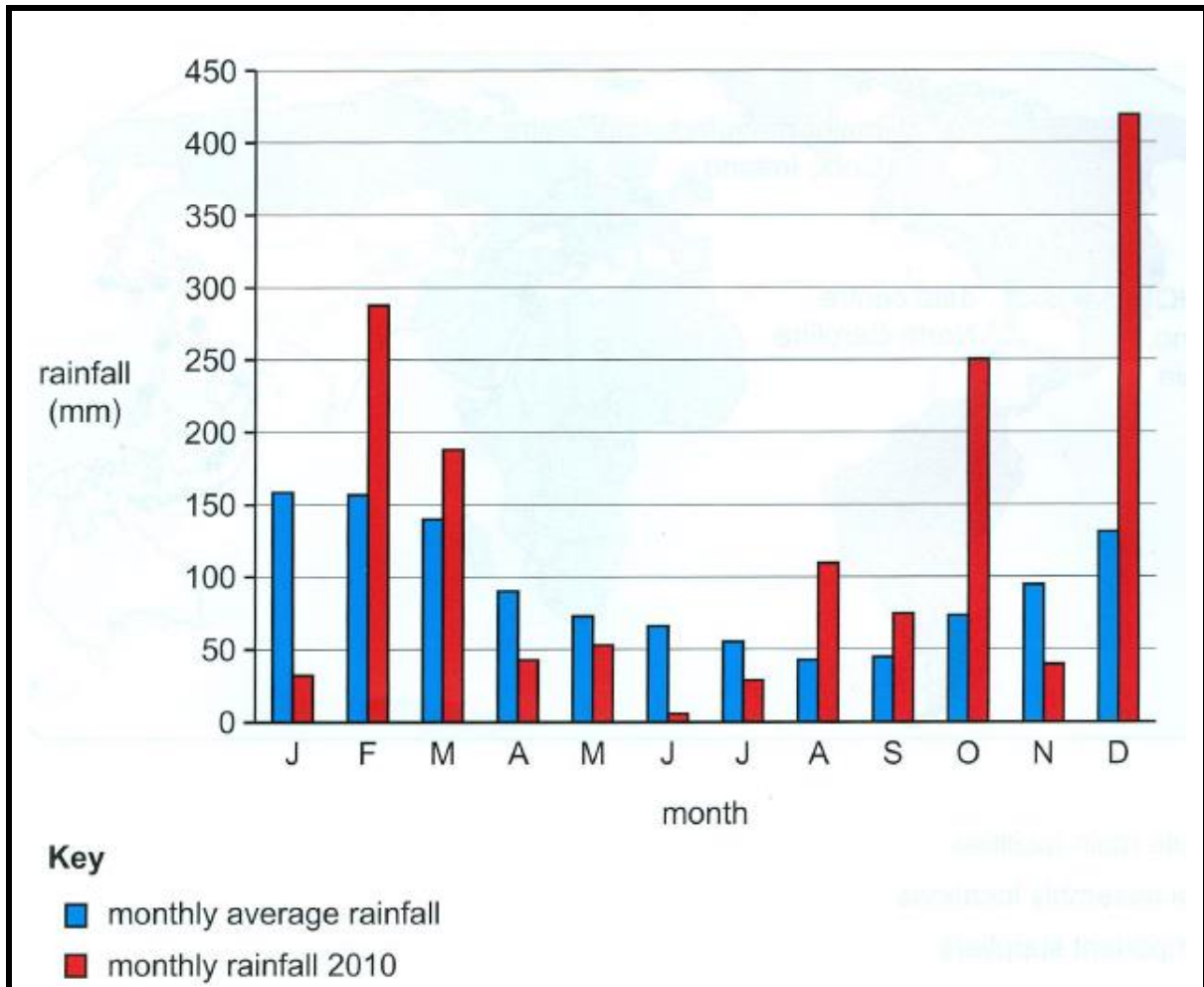
Resource 3 for Question 1

How safe the elderly feel in their neighbourhoods



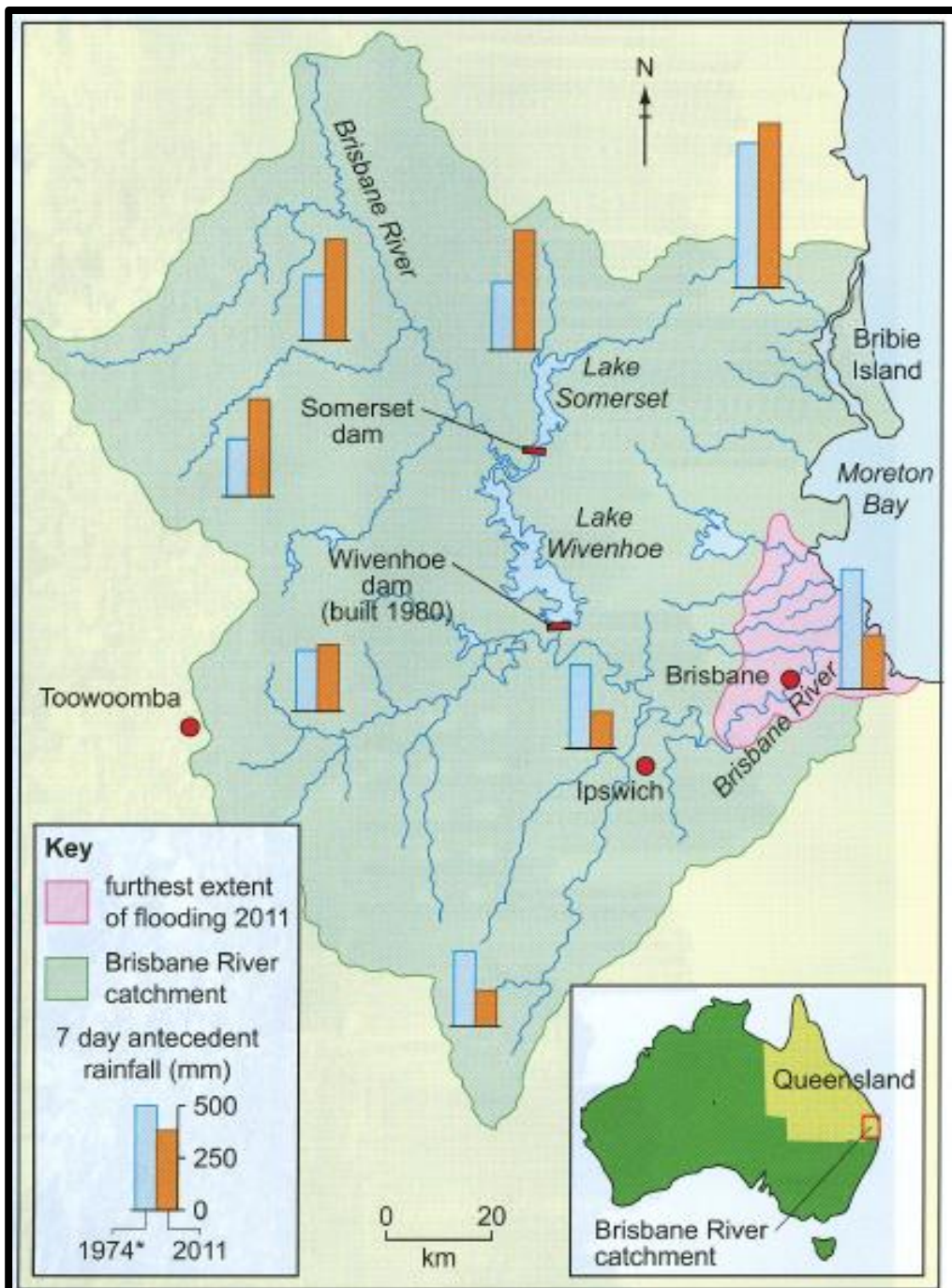
Resource 4 for Question 2

Monthly Average Rainfall and Monthly Rainfall for Brisbane in 2010



Resource 5 for Question 2

Brisbane River catchment and the extent of flooding in January 2011



* The Brisbane River catchment experienced widespread flooding in January 1974.

Resource 6 for Question 2

Photograph of the Brisbane flooding in January 2011



BLANK PAGE